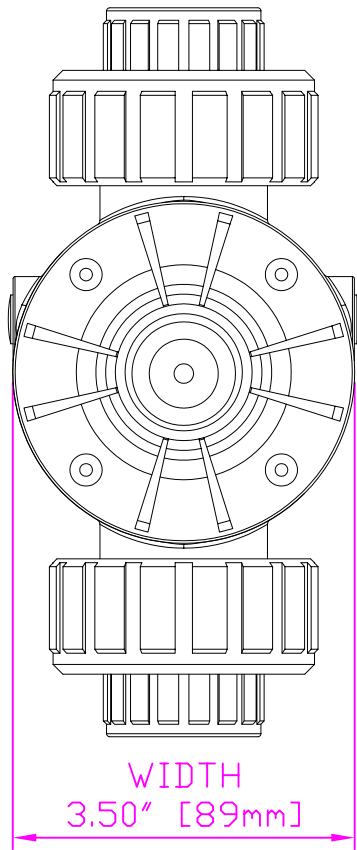
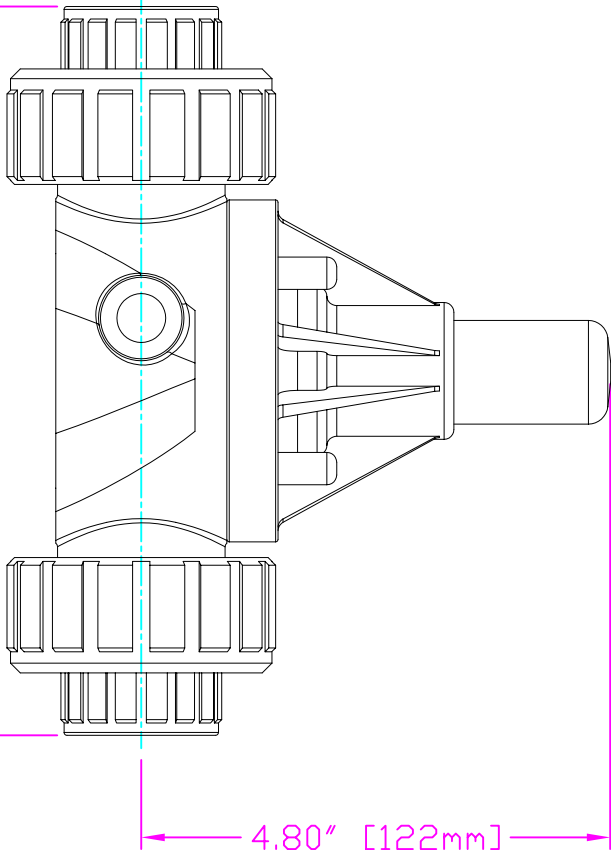
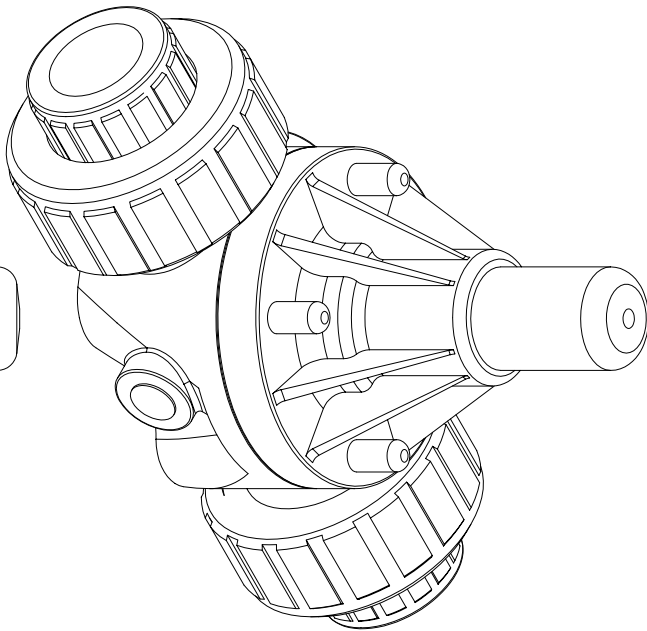


THIS DRAWING IS THE PROPERTY OF PRIMARY FLUID SYSTEMS INC. FROM WHICH A WRITTEN CONSENT FOR APPROVAL SHALL BE REQUIRED PRIOR TO COPYING.

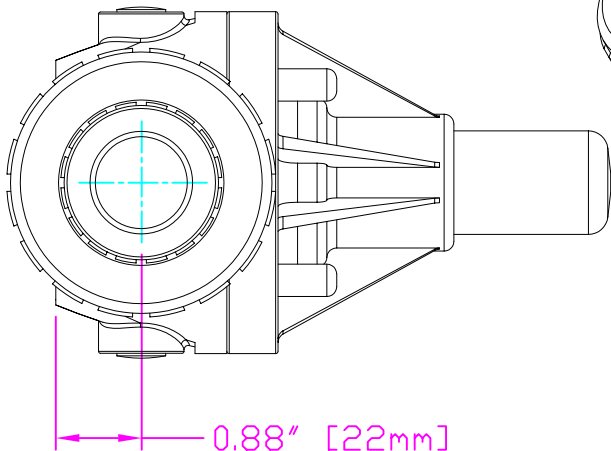


WIDTH
3.50" [89mm]



HEIGHT (H)
4.80" [122mm]

LENGTH (L)
7.30" [185mm]



HEIGHT (h)
0.88" [22mm]

ECD-75I-PVC-P
ECD-75I-CPVC-T
ECD-75I-PP-T
ECD-75I-PVDF-T
ECD-75J-PVC-P
ECD-75J-CPVC-T
ECD-75J-PP-T
ECD-75J-PVDF-T

THIS DRAWING WITH DIMENSIONS
APPLY TO FOLLOWING MODELS:

PRIMARY FLUID SYSTEMS INC.

1050 Cooke Blvd., Burlington, Ontario L7T 4A8

TITLE

UNION X 3/4" (DN 20) SOCKETED
ECD VALVE

DWG TYPE:

PLANAR VIEW 2-D

PROJECT B-SERIES ECD
DATE ISSUED: 17-AUG-10
SHEET 1 OF 1
DRAWN BY: VICTOR W.L.

DWG NO.:
ECD-75I-PVC-P-2D

SCALE: 1/2"

UNITS: INCHES

MATERIAL: POLY

APPROVED BY:

ISO ANGULAR PROJECTION

DIMENSIONAL TOLERANCE:
XXX = ± 0.25"

8.5 X 11
SHEET
SIZE:
A