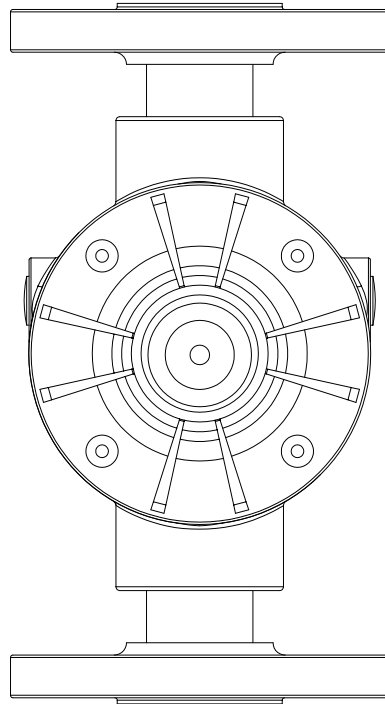
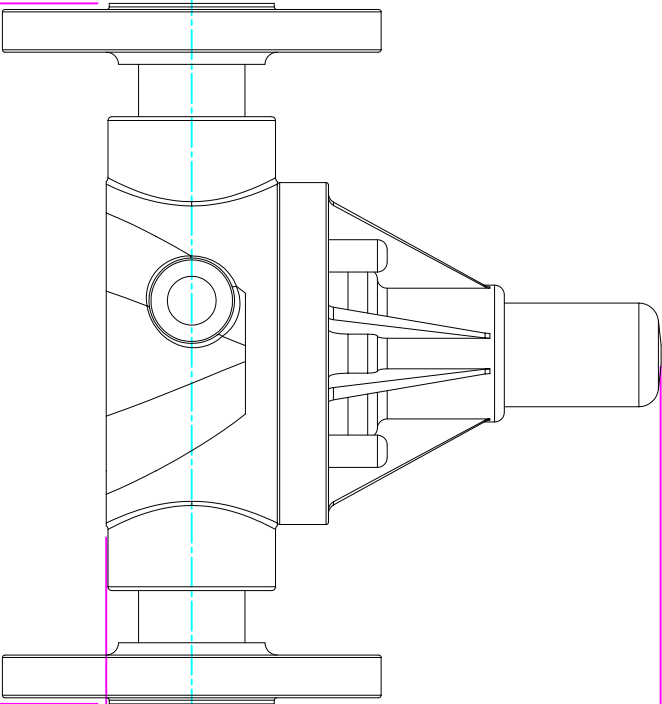


THIS DRAWING IS THE PROPERTY OF PRIMARY FLUID SYSTEMS INC. FROM WHICH A WRITTEN CONSENT FOR APPROVAL SHALL BE REQUIRED PRIOR TO COPYING.



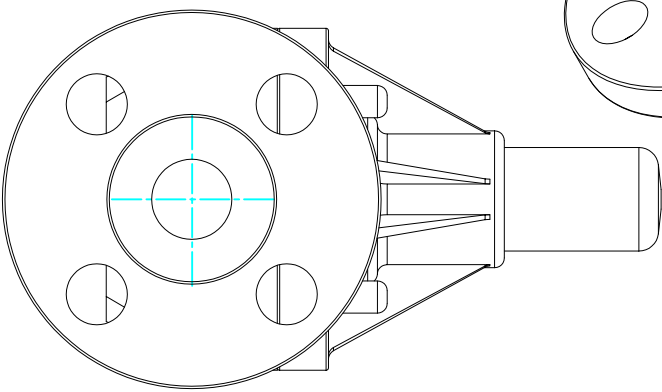
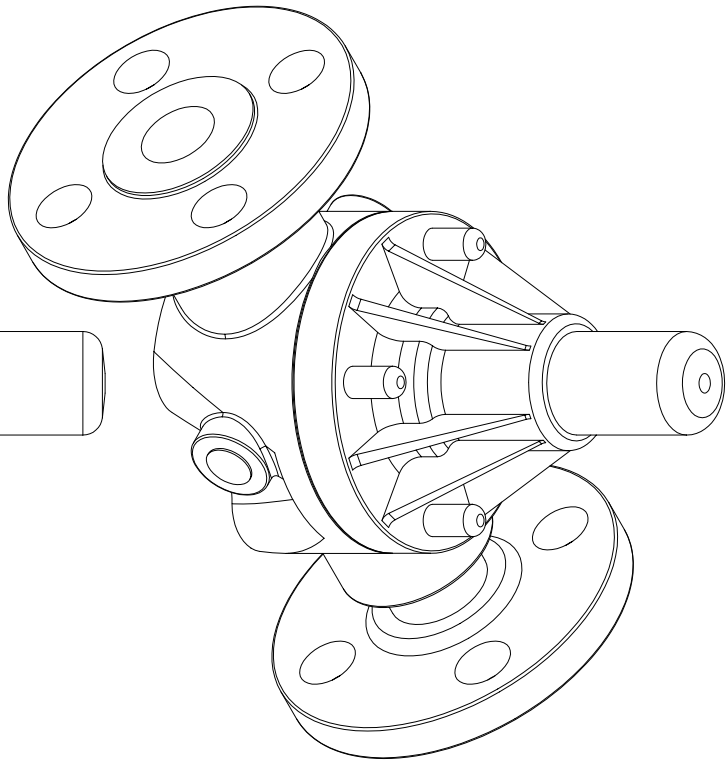
WIDTH
3.88" [98mm]



0.88" [22mm]
HEIGHT (h)

4.80" [122mm]
HEIGHT (H)

7.17" [182mm]
LENGTH (L)



THIS DRAWING WITH DIMENSIONS
APPLY TO FOLLOWING MODELS:

- ECD-75E-PVC-P
- ECD-75E-CPVC-T
- ECD-75E-PP-T
- ECD-75E-PVDF-T
- ECD-75F-PVC-P
- ECD-75F-CPVC-T
- ECD-75F-PP-T
- ECD-75F-PVDF-T

PRIMARY FLUID SYSTEMS INC.

1050 Cooke Blvd, Burlington, Ontario L7T 4A8

TITLE
¾" (DN 20) FLANGED
ECD VALVE

PROJECT B-SERIES ECD	SHIT 1 OF 1	DRAWN BY VICTOR W.L.
DATE ISSUED: 16-AUG-10	SCALE: 1:2	UNITS: INCHES
DWG NO.: ECD-75E-PVC-P-2D		REV# 1
MATERIAL: POLY		DIMENSIONAL TOLERANCE XXX = ± 0.25"
APPROVED BY:	HOOD ANGLE PROJECTION	SHEET SIZE: 8.5 X 11
		A

DWG TYPE:

PLANAR VIEW 2-D