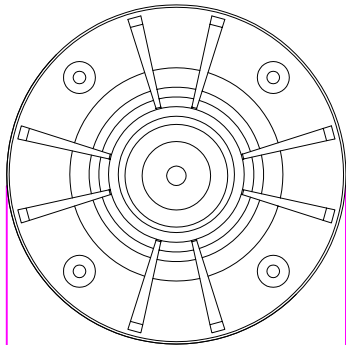
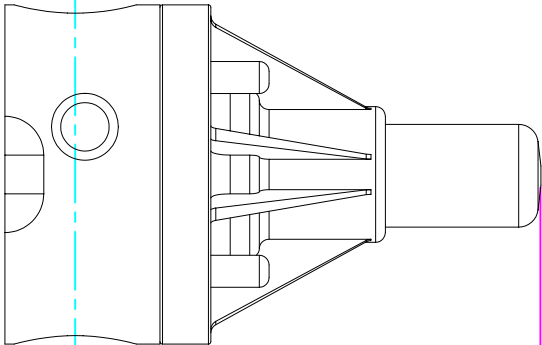


THIS DRAWING IS THE PROPERTY OF PRIMARY FLUID SYSTEMS INC. FROM WHICH A WRITTEN CONSENT FOR APPROVAL SHALL BE REQUIRED PRIOR TO COPYING.

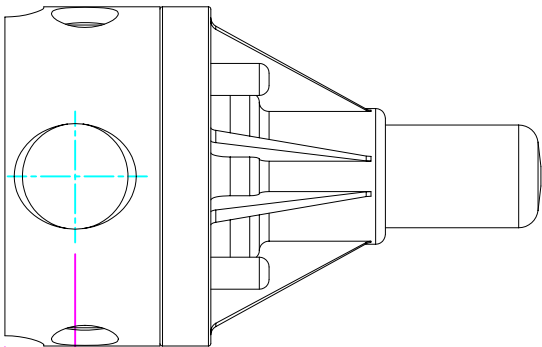
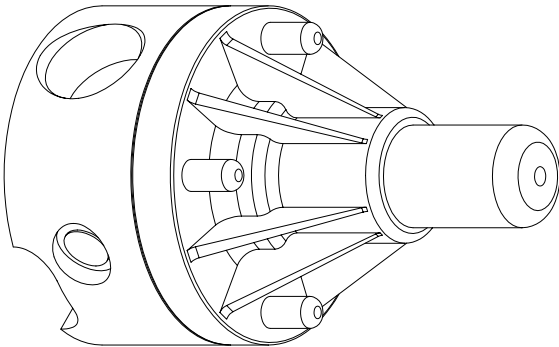


WIDTH  
3.50" [89mm]



4.80" [122mm]  
HEIGHT (H)

LENGTH (L)  
3.50" [89mm]



0.73" [18mm]  
HEIGHT (h)

THIS DRAWING WITH DIMENSIONS  
APPLY TO FOLLOWING MODELS:

ECD-75C-ALL20-T  
ECD-75C-HAST-T  
ECD-75C-SS-T  
ECD-75D-ALL20-T  
ECD-75D-HAST-T  
ECD-75D-SS-T

# PRIMARY FLUID SYSTEMS INC.

1050 Cooke Blvd, Burlington, Ontario L7T 4A8

TITLE

¾" CDN 20" SOCKETED  
ECD VALVE

DWG TYPE

PLANAR VIEW 2-D

PROJECT: B-SERIES ECD  
DATE ISSUED: 26-AUG-10  
SHT: 1 OF 1  
DRAWN BY: VICTOR W.

DWG. NO.:  
ECD-75C-SS-T-2D

UNITS: INCHES

MATERIAL: METALLIC

APPROVED BY:

THIRD ANGLE PROJECTION



DIMENSIONAL TOLERANCE  
XXX = ± 0.25"

SHEET  
SIZE: 8.5 X 11

REV: 1