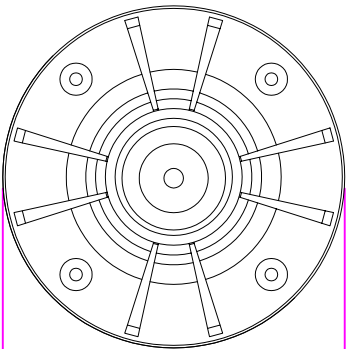
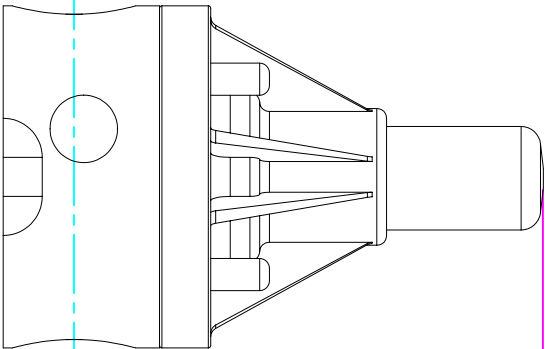


THIS DRAWING IS THE PROPERTY OF PRIMARY FLUID SYSTEMS INC. FROM WHICH A WRITTEN CONSENT FOR APPROVAL SHALL BE REQUIRED PRIOR TO COPYING.

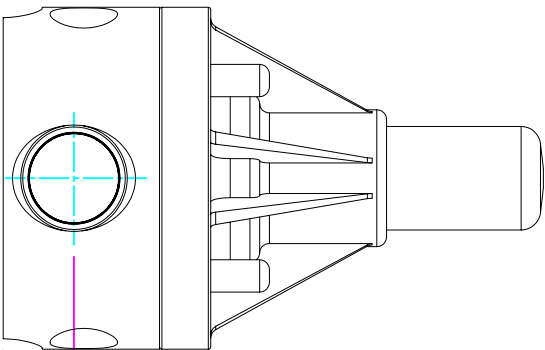
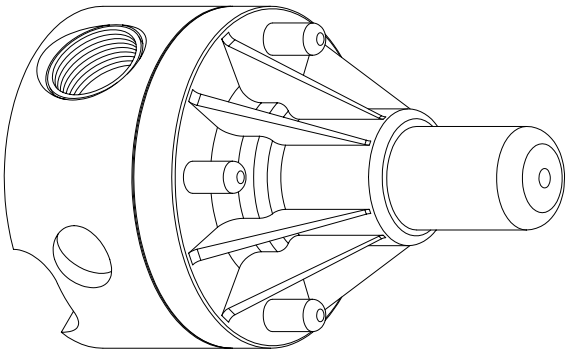


WIDTH
3.50" [89mm]



4.80" [122mm]
HEIGHT (H)

LENGTH (L)
3.50" [89mm]



0.73" [18mm]
HEIGHT (h)

THIS DRAWING WITH DIMENSIONS
APPLY TO FOLLOWING MODELS:

- ECD-75A-ALL20-T
- ECD-75A-HAST-T
- ECD-75A-SS-T
- ECD-75B-ALL20-T
- ECD-75B-HAST-T
- ECD-75B-SS-T

PRIMARY FLUID SYSTEMS INC.

1050 Cooke Blvd., Burlington, Ontario L7T 4A8

TITLE
¾" THREADED
ECD VALVE

DWG TYPE:

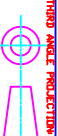
PLANAR VIEW 2-D

PROJECT: B-SERIES ECD SHT. 1 OF 1 DRAWN BY: VICTOR W.L.
DATE ISSUED: 26-AUG-10 SCALE: 1:2 UNITS: INCHES

DWG NO.:
ECD-75A-SS-T-2D

MATERIAL: METALLIC

APPROVED BY:



DIMENSIONAL TOLERANCE
XXX = ± 0.25"

REV #
1

SHEET
SIZE:
8.5 X 11

A