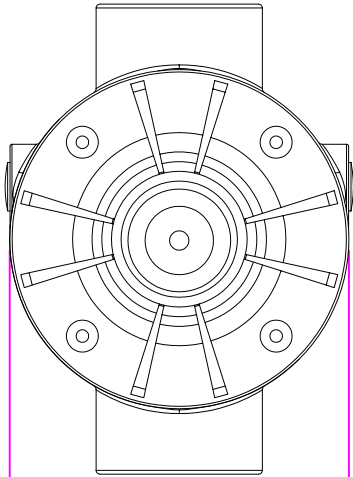
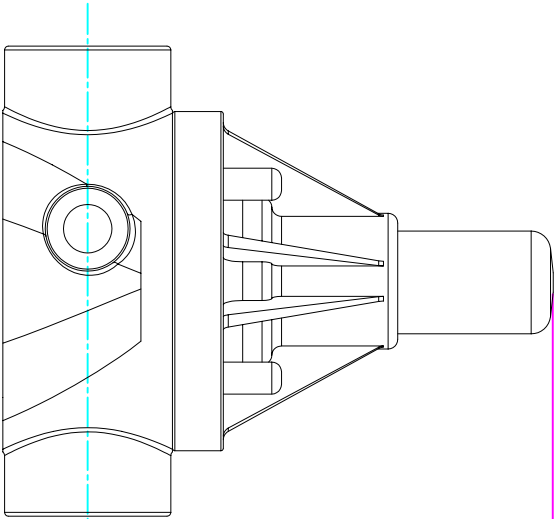
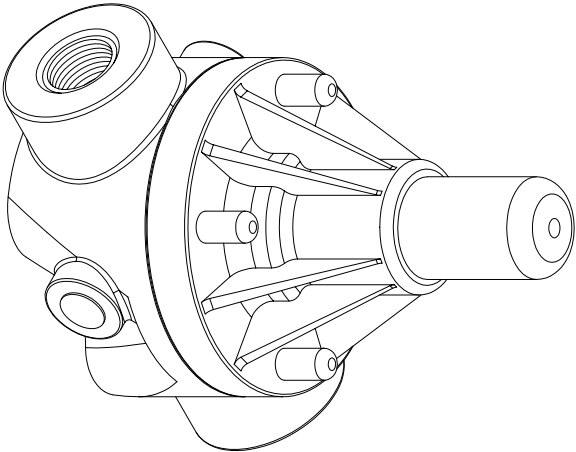


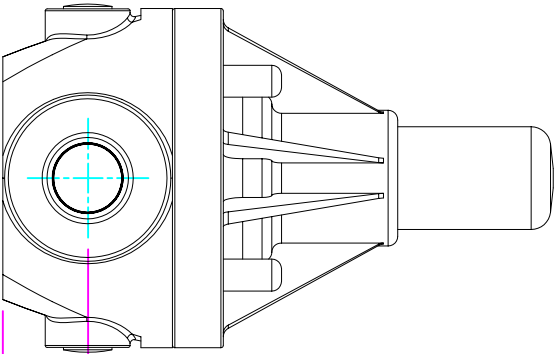
THIS DRAWING IS THE PROPERTY OF PRIMARY FLUID SYSTEMS INC. FROM WHICH A WRITTEN CONSENT FOR APPROVAL SHALL BE REQUIRED PRIOR TO COPYING.



WIDTH
3.50" [89mm]



4.80" [122mm]
HEIGHT (H)



0.88" [22mm]
HEIGHT (h)

ECD-75A-PVC-P
ECD-75A-CPVC-T
ECD-75A-PP-T
ECD-75A-PVDF-T
ECD-75B-PVC-P
ECD-75B-CPVC-T
ECD-75B-PP-T
ECD-75B-PVDF-T

THIS DRAWING WITH DIMENSIONS
APPLY TO FOLLOWING MODELS:

PRIMARY FLUID SYSTEMS INC.

1050 Cooke Blvd, Burlington, Ontario L7T 4A8

TITLE:
¾" THREADED
ECD VALVE

DWG TYPE:

PLANAR VIEW 2-D

PROJECT: B-SERIES ECD SHT: 1 OF 1 DRAWN BY: VICTOR W.L.

DATE ISSUED: 16-AUG-10 SCALE: 1:2 UNITS: INCHES

ECD-75A-PVC-P-2D

MATERIAL: POLY

APPROVED BY:

THIRD ANGLE PROJECTION

DIMENSIONAL TOLERANCE
XXX = ± 0.25"

REV: #
1

SHEET
SIZE:
8.5 X 11

A