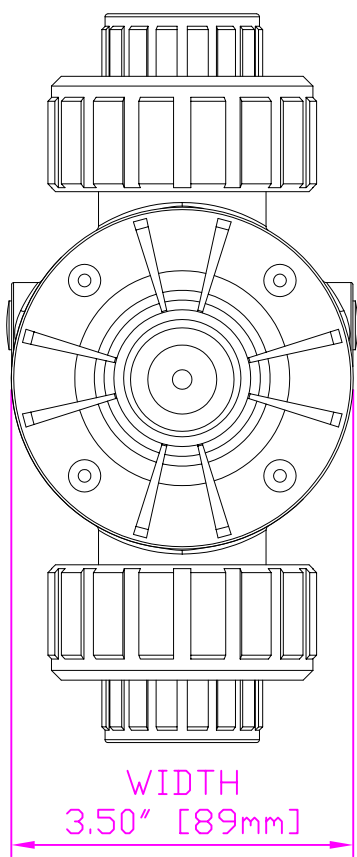
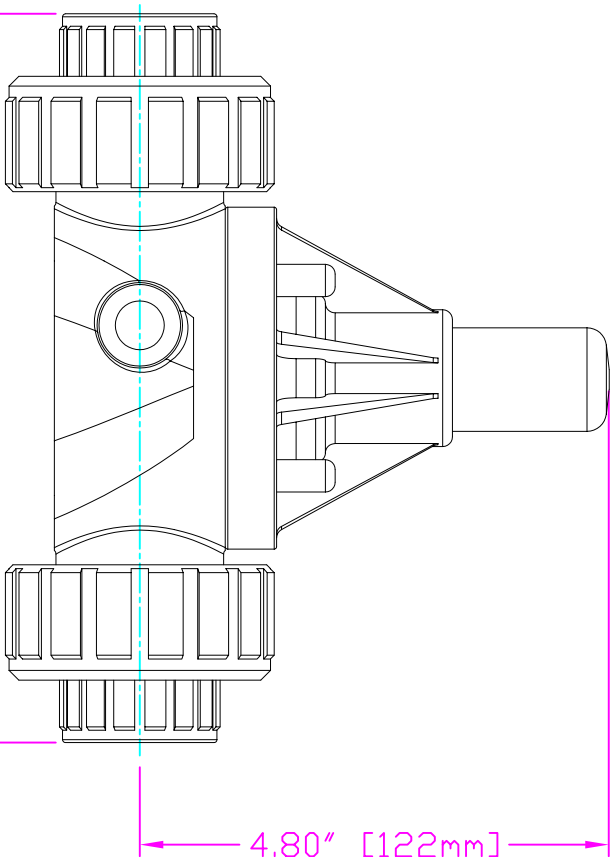


THIS DRAWING IS THE PROPERTY OF PRIMARY FLUID SYSTEMS INC. FROM WHICH A WRITTEN CONSENT FOR APPROVAL SHALL BE REQUIRED PRIOR TO COPYING.

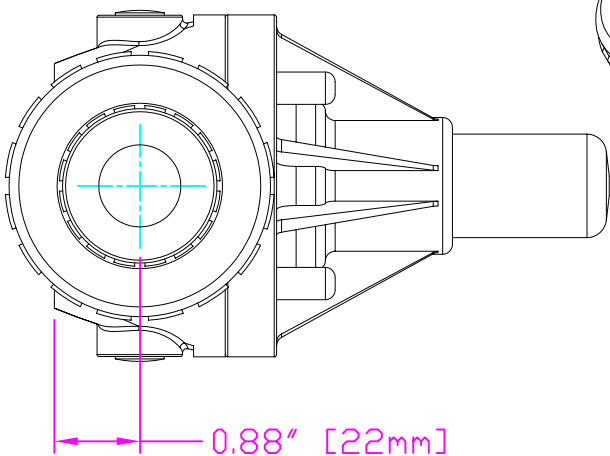
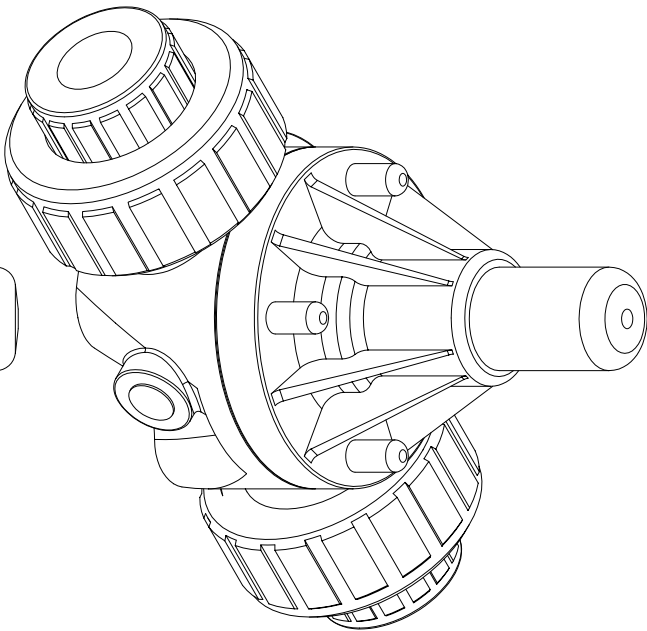


WIDTH
3.50" [89mm]



4.80" [122mm]
HEIGHT (H)

7.30" [185mm]
LENGTH (L)



0.88" [22mm]
HEIGHT (h)

- ECD-SSI-PVC-P
- ECD-SSI-CPVC-T
- ECD-SSI-PP-T
- ECD-SSI-PVDF-T
- ECD-SSJ-PVC-P
- ECD-SSJ-CPVC-T
- ECD-SSJ-PP-T
- ECD-SSJ-PVDF-T

THIS DRAWING WITH DIMENSIONS
APPLY TO FOLLOWING MODELS:

PRIMARY FLUID SYSTEMS INC.

1050 Cooke Blvd., Burlington, Ontario L7T 4A8

TITLE:

UNION X 1/2" (DN 15) SOCKETED
ECD VALVE (HI FLOW VERSION)

DWG TYPE:

PLANAR VIEW 2-D

PROJECT: B-SERIES ECD
DATE ISSUED: 13-AUG-10
SHEET: 1 OF 1
DRAWN BY: VICTOR W.L.

DWG NO.:

ECD-SSI-PVC-P-2D

MATERIAL: POLY

APPROVED BY:



DIMENSIONAL TOLERANCE:
XXX = ± 0.25"

REV.#:
1
SHEET
SIZE:
A