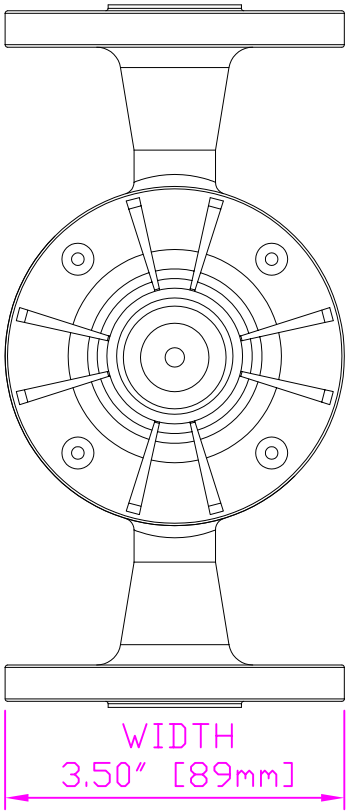
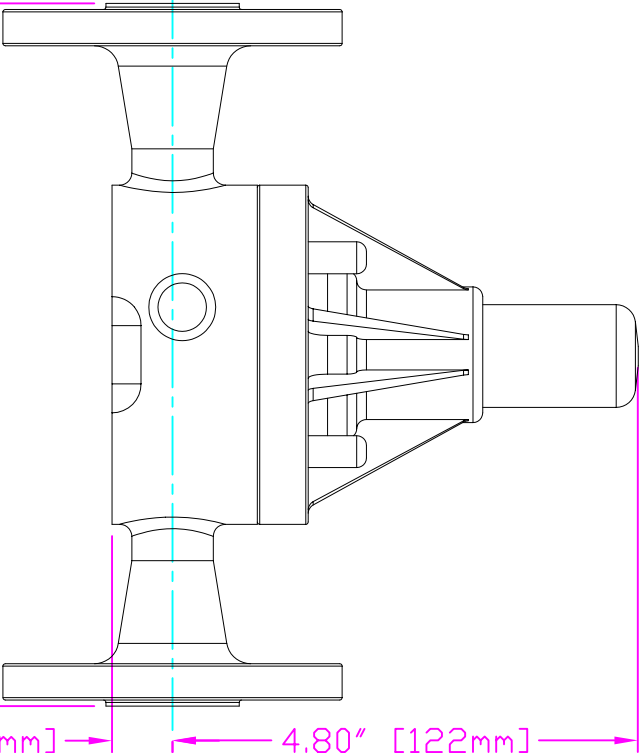
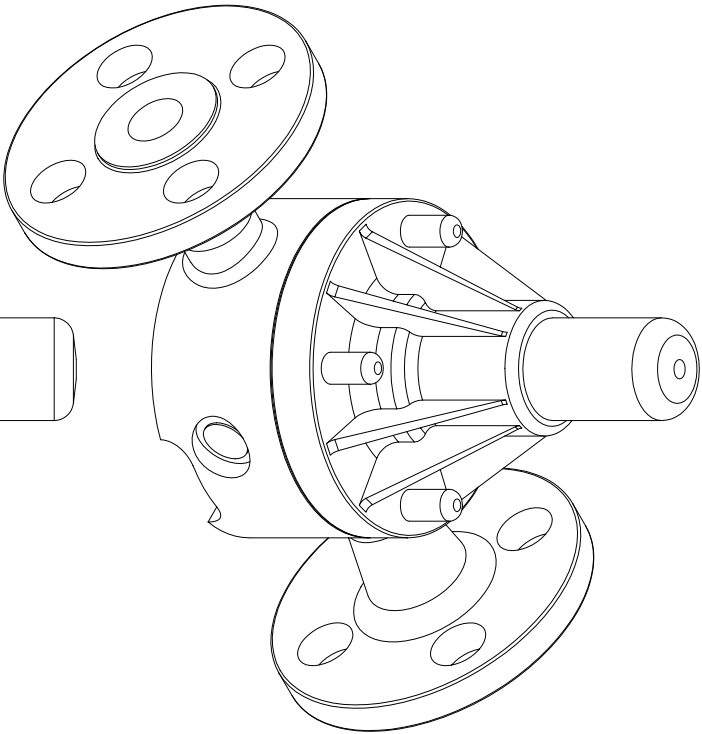


THIS DRAWING IS THE PROPERTY OF PRIMARY FLUID SYSTEMS INC. FROM WHICH A WRITTEN CONSENT FOR APPROVAL SHALL BE REQUIRED PRIOR TO COPYING.



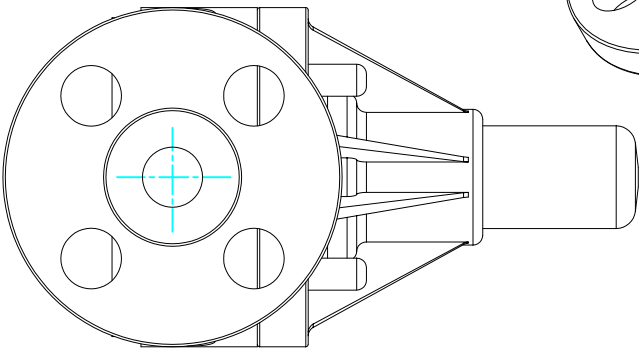
WIDTH
3.50" [89mm]



HEIGHT (H)
4.80" [122mm]

HEIGHT (h)
0.63" [16mm]

LENGTH (L)
7.17" [182mm]



THIS DRAWING WITH DIMENSIONS
APPLY TO FOLLOWING MODELS:

ECD-SS-E-ALL20-T
ECD-SS-E-HAST-T
ECD-SS-E-SS-T
ECD-SSF-ALL20-T
ECD-SSF-HAST-T
ECD-SSF-SS-T

PRIMARY FLUID SYSTEMS INC.

1050 Cooke Blvd., Burlington, Ontario L7T 4A8

TITLE:

1/2" (DN 15) FLANGED
ECD VALVE (HI FLOW VERSION)

PROJECT: B-SERIES ECD
DATE ISSUED: 26-AUG-10
SHT: 1 OF 1
SCALE: 1:2
DRAWN BY: VICTOR W.

DWG NO.:
ECD-SS-E-SS-T-2D

MATERIAL: METALLIC

APPROVED BY:



DIMENSIONAL TOLERANCE
XXX = ± 0.03"

REV: #
1

SHEET
SIZE:
8.5 X 11"

A

DWG TYPE:

PLANAR VIEW 2-D