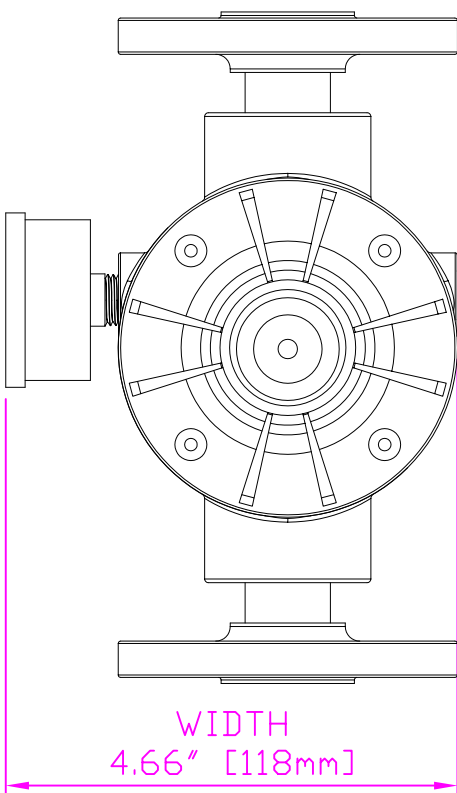
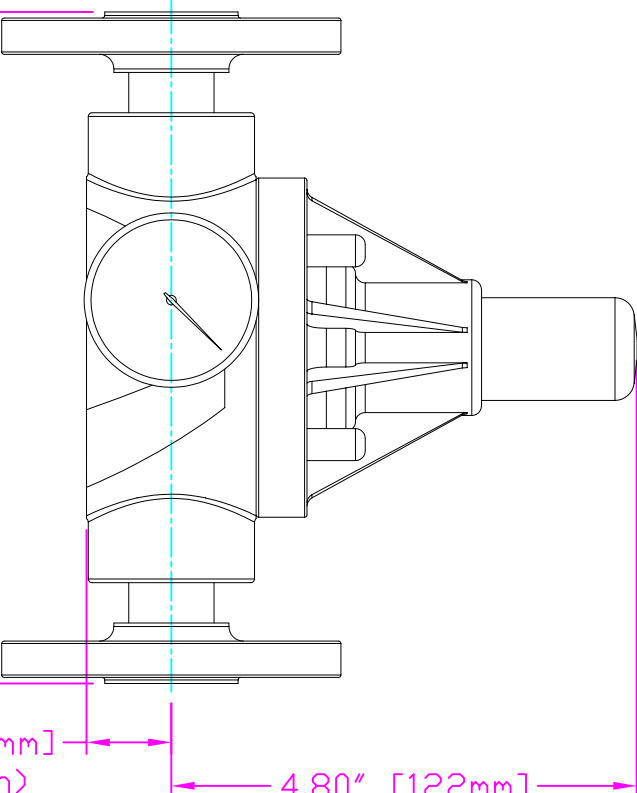


THIS DRAWING IS THE PROPERTY OF PRIMARY FLUID SYSTEMS INC. FROM WHICH A WRITTEN CONSENT FOR APPROVAL SHALL BE REQUIRED PRIOR TO COPYING.



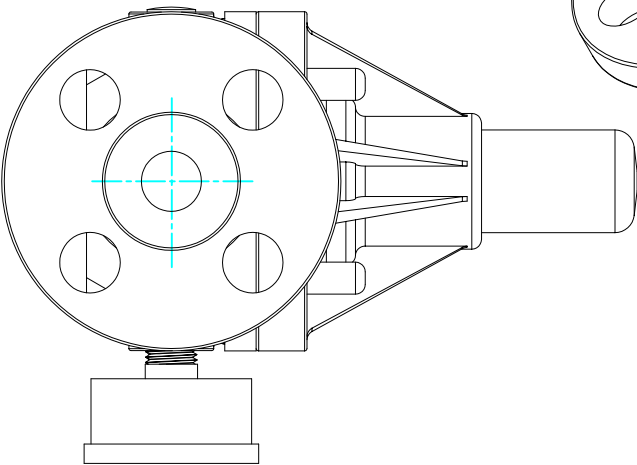
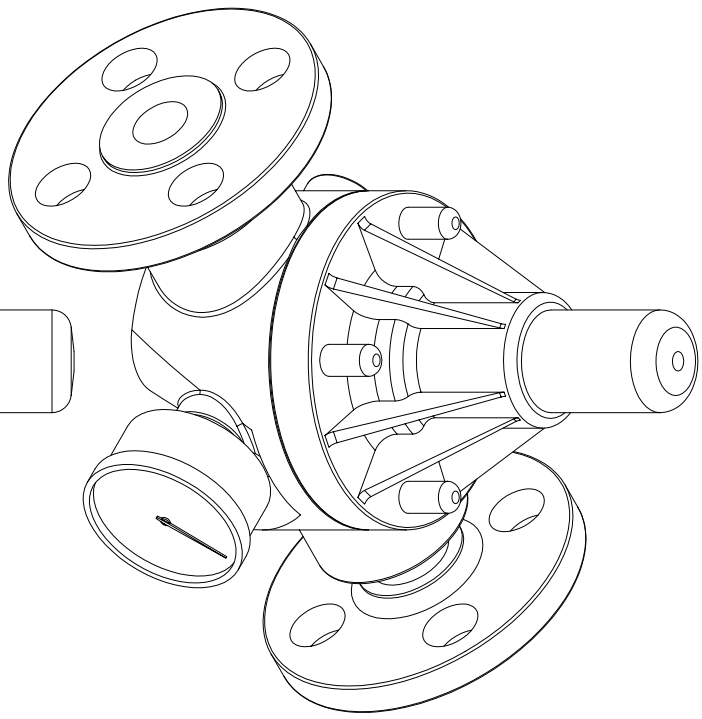
WIDTH
4.66" [118mm]



4.80" [122mm]
HEIGHT (H)

0.88" [22mm]
HEIGHT (h)

6.93" [176mm]
LENGTH (L)



- ECD-SSF-PVC-P-GAUGE
- ECD-SSF-CPVC-T-GAUGE
- ECD-SSF-PP-T-GAUGE
- ECD-SSF-PVDF-T-GAUGE
- ECD-SSF-PVC-P-GAUGE
- ECD-SSF-CPVC-T-GAUGE
- ECD-SSF-PP-T-GAUGE
- ECD-SSF-PVDF-T-GAUGE

THIS DRAWING WITH DIMENSIONS
APPLY TO FOLLOWING MODELS:

PRIMARY FLUID SYSTEMS INC.

1050 Cooke Blvd., Burlington, Ontario L7T 4A8

1/2" (DN 15) FLANGED
ECD VALVE (HI FLOW VERSION)
WITH GAUGE

PRIMARY FLUID SYSTEMS INC.			
1050 Cooke Blvd., Burlington, Ontario L7T 4A8			
TITLE		PROJECT: B-SERIES ECD	
1/2" CDN 15) FLANGED ECD VALVE (HI FLOW VERSION) WITH GAUGE		SHT. 1 OF 1	DRAWN BY: VICTOR W.L.
DWG TYPE:		DATE ISSUED: 13-AUG-10	SCALE: 1:2
PLANAR VIEW 2-D		UNITS: INCHES	
DWG NO:		ECD-55E-PVC-P-GAUGE-2D	
MATERIAL: POLY		REV.# 1	
APPROVED BY:		DIMENSIONAL TOLERANCE X.XX = ± 0.25"	
TWO ANGLE PROJECTION		8.5 X 11 SHEET SIZE: A	

PLANAR VIEW 2-D