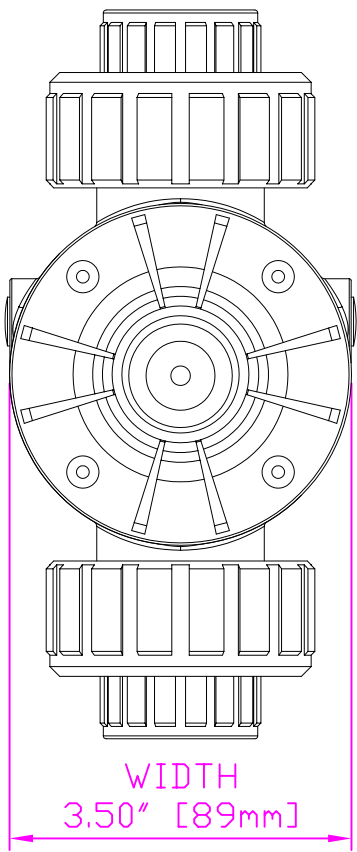
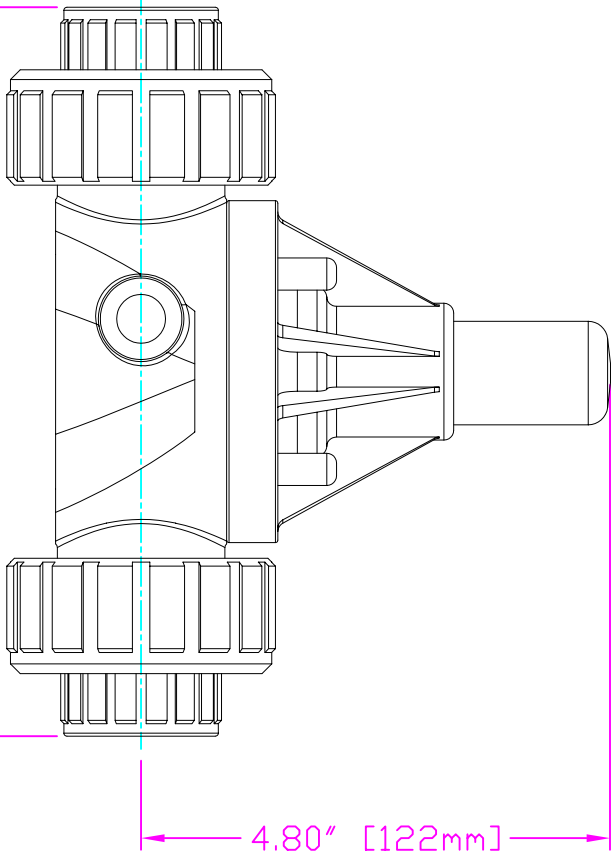


THIS DRAWING IS THE PROPERTY OF PRIMARY FLUID SYSTEMS INC. FROM WHICH A WRITTEN CONSENT FOR APPROVAL SHALL BE REQUIRED PRIOR TO COPYING.

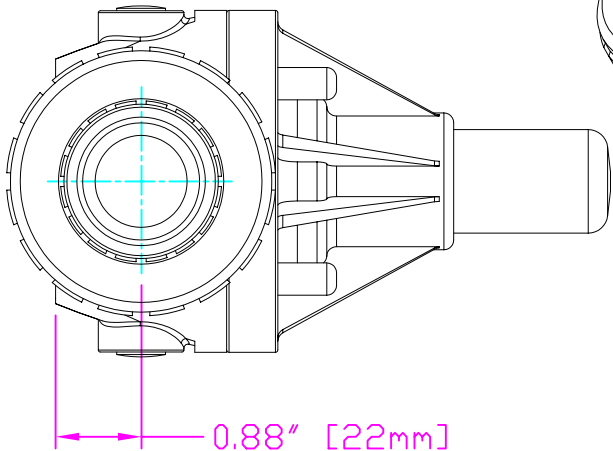
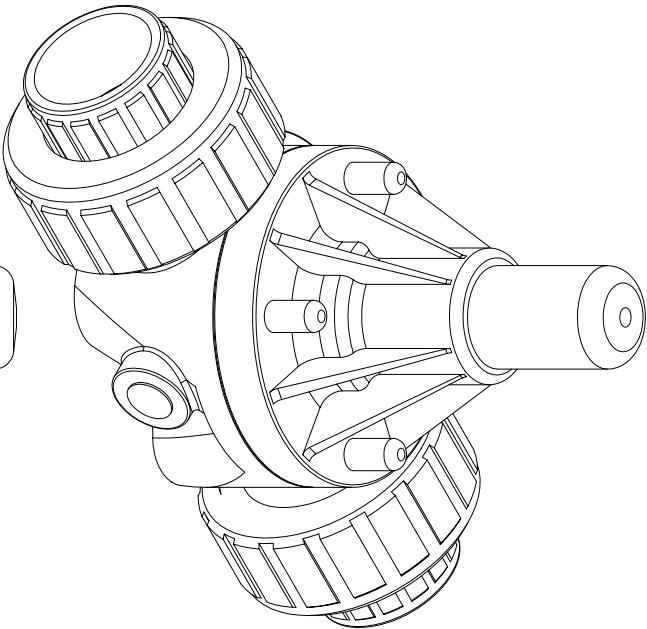


WIDTH
3.50" [89mm]



4.80" [122mm]
HEIGHT (H)

7.30" [185mm]
LENGTH (L)



0.88" [22mm]
HEIGHT (h)

ECD-100I-PVC-P
ECD-100I-CPVC-T
ECD-100I-PP-T
ECD-100I-PVDF-T
ECD-100J-PVC-P
ECD-100J-CPVC-T
ECD-100J-PP-T
ECD-100J-PVDF-T

THIS DRAWING WITH DIMENSIONS
APPLY TO FOLLOWING MODELS:

PRIMARY FLUID SYSTEMS INC.

1050 Cooke Blvd., Burlington, Ontario L7T 4A8

TITLE:

UNION X 1" (DN 25) SOCKETED
ECD VALVE

DWG TYPE:

PLANAR VIEW 2-D

PROJECT: B-SERIES ECD SHT. 1 OF 1 DRAWN BY: VICTOR W.L.

DATE ISSUED: 17-AUG-10 SCALE: 1:2 UNITS: INCHES

DWG NO.: ECD-100I-PVC-P-2D

MATERIAL: POLY

APPROVED BY:

THIRD ANGLE PROJECTION

DIMENSIONAL TOLERANCE
X.XX = ± 0.25"

REV.#

1

SHEET

8.5 X 11

SIZE:

A