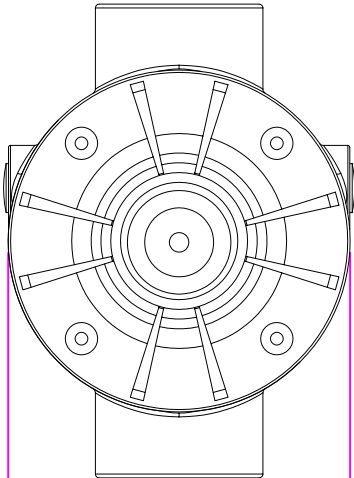
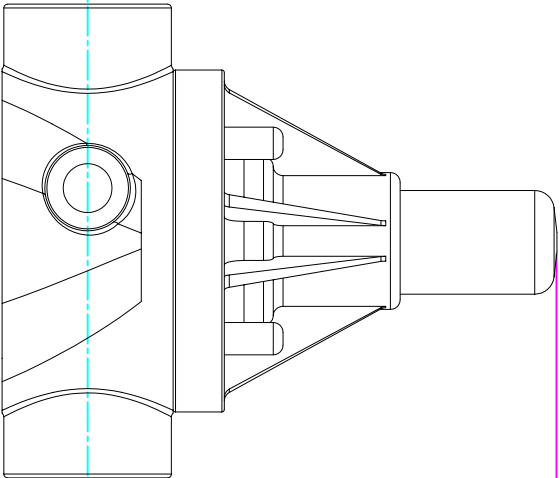
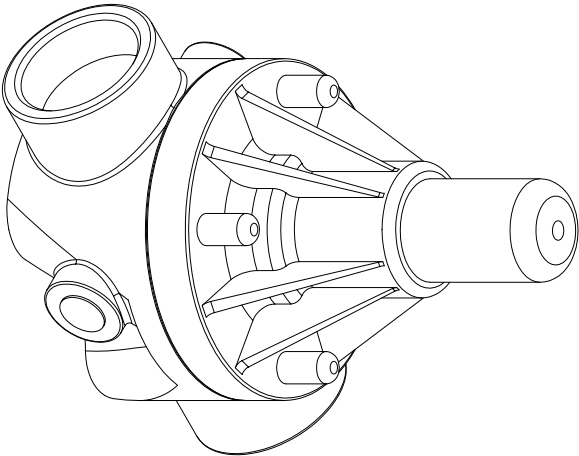


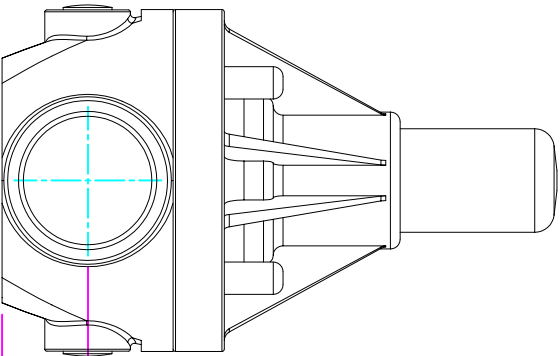
THIS DRAWING IS THE PROPERTY OF PRIMARY FLUID SYSTEMS INC. FROM WHICH A WRITTEN CONSENT FOR APPROVAL SHALL BE REQUIRED PRIOR TO COPYING.



WIDTH
3.50" [89mm]



4.80" [122mm]
HEIGHT (H)



0.88" [22mm]
HEIGHT (h)

- ECD-100C-PVC-P
ECD-100C-CPVC-T
ECD-100C-PP-T
ECD-100C-PVDF-T
ECD-100D-PVC-P
ECD-100D-CPVC-T
ECD-100D-PP-T
ECD-100D-PVDF-T

THIS DRAWING WITH DIMENSIONS
APPLY TO FOLLOWING MODELS:

4.85" [123mm]
LENGTH (L)

PRIMARY FLUID SYSTEMS INC.

1050 Cooke Blvd., Burlington, Ontario L7T 4A8

TITLE:
1" (DN 25) SOCKETED
ECD VALVE

DWG TYPE:

PLANAR VIEW 2-D

PROJECT: B-SERIES ECD SHT. 1 OF 1 DRAWN BY: VICTOR W. L.

DATE ISSUED: 17-AUG-10 SCALE: 1:2 UNITS: INCHES

DWG NO.:

ECD-100C-PVC-P-2D

MATERIAL: POLY

APPROVED BY:



DIMENSIONAL TOLERANCE
XXX = ± 0.25"

REV.#:

1

SHEET
SIZE:
8.5 X 11

A