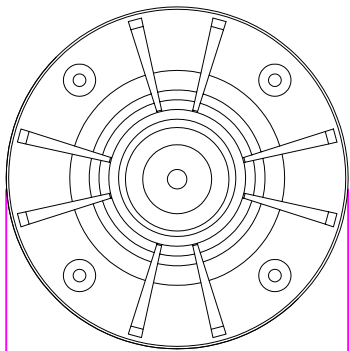
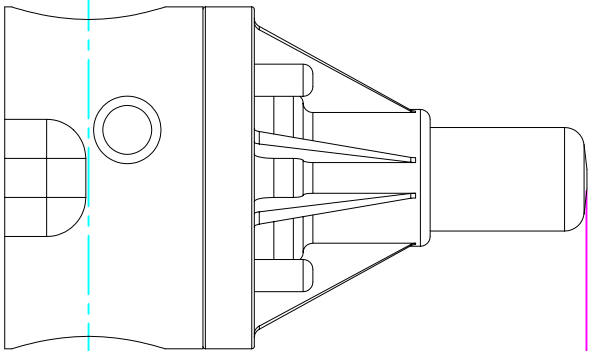


THIS DRAWING IS THE PROPERTY OF PRIMARY FLUID SYSTEMS INC. FROM WHICH
A WRITTEN CONSENT FOR APPROVAL SHALL BE REQUIRED PRIOR TO COPYING.

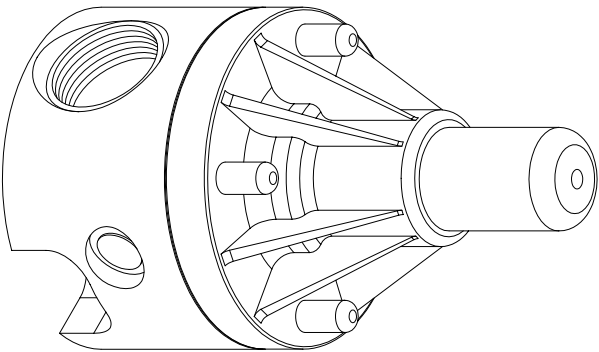


WIDTH
3.50" [89mm]

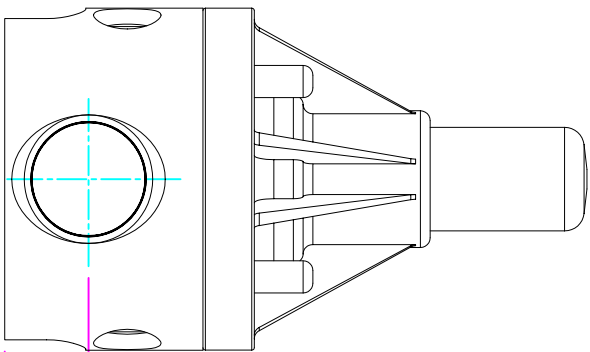


LENGTH (L)
3.50" [89mm]

5.10" [129mm]
HEIGHT (H)



0.86" [22mm]
HEIGHT (h)



THIS DRAWING WITH DIMENSIONS
APPLY TO FOLLOWING MODELS:

- ECD-100A-ALL20-T
- ECD-100A-HAST-T
- ECD-100A-SS-T
- ECD-100B-ALL20-T
- ECD-100B-HAST-T
- ECD-100B-SS-T

PRIMARY FLUID SYSTEMS INC.

1050 Cooke Blvd., Burlington, Ontario L7T 4A8

TITLE:

1" THREADED
ECD VALVE

DWG TYPE:

PLANAR VIEW 2-D

PROJECT B-SERIES ECD SHT. 1 OF 1 DRAWN BY: VICTOR W.L.

DATE ISSUED: 26-AUG-10 SCALE: 1:2 UNITS: INCHES

DWG NO. ECD-100A-SS-T-2D

REV.#: 1

MATERIAL: METALLIC

DIMENSIONAL TOLERANCE
XXX = ± 0.25"

APPROVED BY:

THIRD ANGLE PROJECTION



SHEET SIZE: 8.5 X 11
A