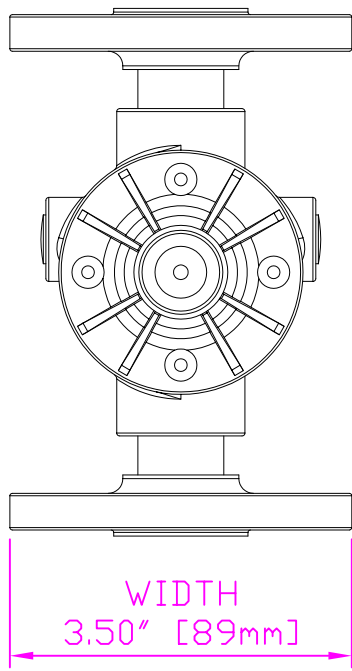
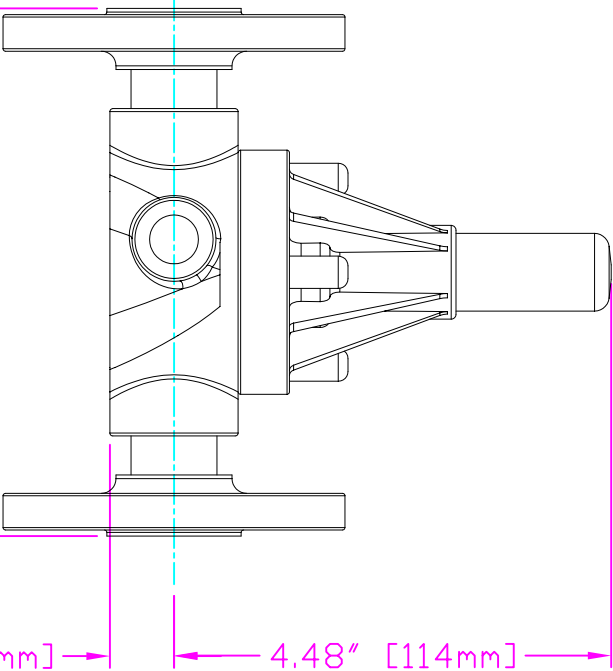
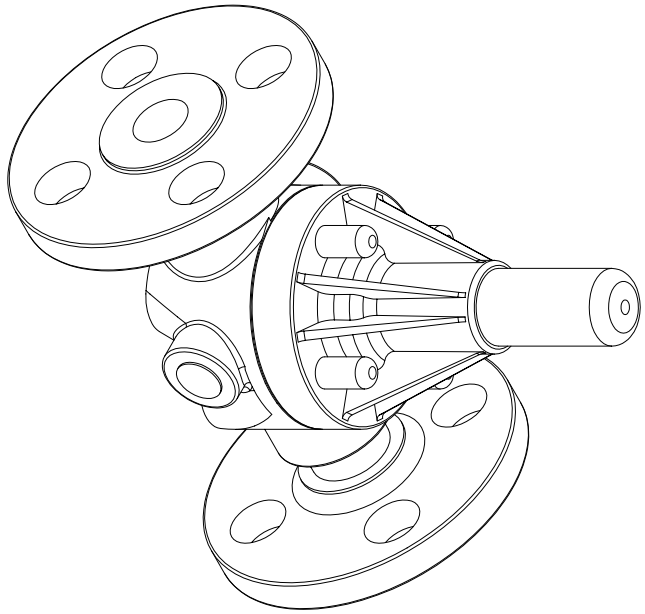


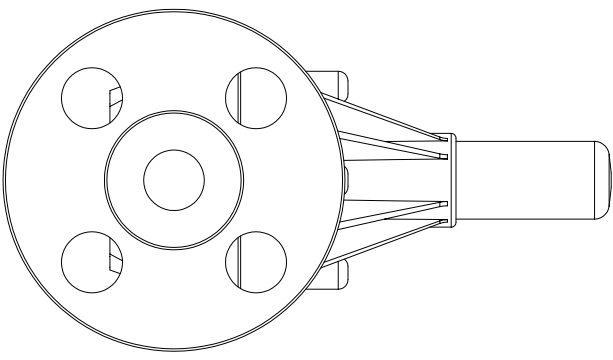
THIS DRAWING IS THE PROPERTY OF PRIMARY FLUID SYSTEMS INC. FROM WHICH A WRITTEN CONSENT FOR APPROVAL SHALL BE REQUIRED PRIOR TO COPYING.



WIDTH  
3.50" [89mm]



HEIGHT (H)  
4.48" [114mm]



HEIGHT (h)  
0.66" [17mm]

LENGTH (L)  
5.40" [137mm]

THIS DRAWING WITH DIMENSIONS  
APPLY TO FOLLOWING MODELS:

- ECD-50E-PVC-P
- ECD-50E-CPVC-T
- ECD-50E-PP-T
- ECD-50E-PVDF-T
- ECD-50F-PVC-P
- ECD-50F-CPVC-T
- ECD-50F-PP-T
- ECD-50F-PVDF-T

**PRIMARY FLUID SYSTEMS INC.**

1050 Cooke Blvd., Burlington, Ontario L7T 4A8

TITLE  
**1/2" (DN 15) FLANGED  
ECD VALVE**

DWG TYPE: PLANAR VIEW 2-D

PROJECT: A-SERIES ECD  
DATE ISSUED: 28-JUL-10  
DWG NO: ECD-50E-PVC-P-2D  
MATERIAL: POLY

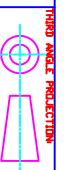
SHIT 1 OF 1

DRAWN BY: VICTOR W. L.  
UNITS: INCHES  
REV#: 1

SCALE: 1:2

DIMENSIONAL TOLERANCE  
XXX = ± 0.25"

APPROVED BY:



8.5 X 11  
SHEET  
SIZE:  
**A**