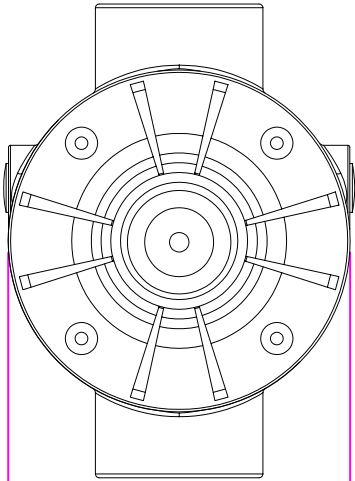
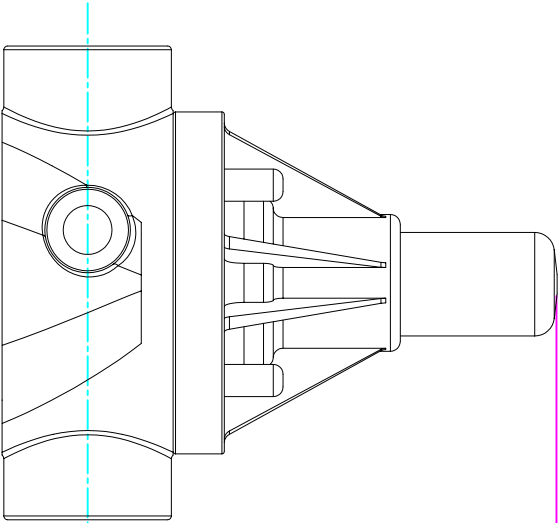
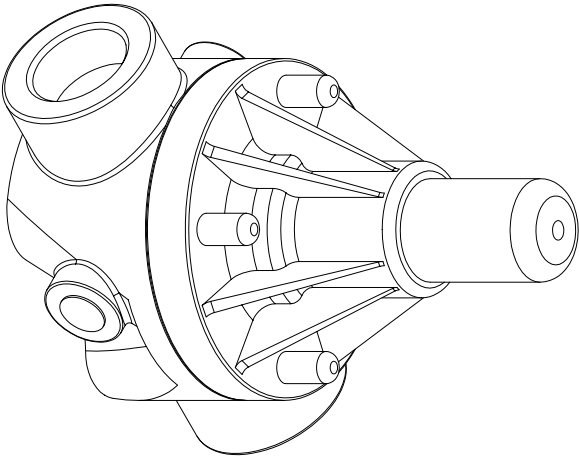


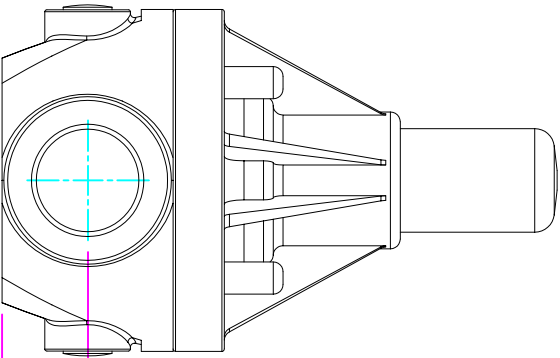
THIS DRAWING IS THE PROPERTY OF PRIMARY FLUID SYSTEMS INC. FROM WHICH A WRITTEN CONSENT FOR APPROVAL SHALL BE REQUIRED PRIOR TO COPYING.



WIDTH
3.50" [89mm]



4.80" [122mm]
HEIGHT (H)



0.88" [22mm]
HEIGHT (h)

- THIS DRAWING WITH DIMENSIONS
APPLY TO FOLLOWING MODELS:
- ECD-75C-PVC-P
 - ECD-75C-CPVC-T
 - ECD-75C-PP-T
 - ECD-75C-PVDF-T
 - ECD-75D-PVC-P
 - ECD-75D-CPVC-T
 - ECD-75D-PP-T
 - ECD-75D-PVDF-T

4.85" [123mm]
LENGTH (L)

PRIMARY FLUID SYSTEMS INC.

1050 Cooke Blvd., Burlington, Ontario L7T 4A8

TITLE: 3/4" CDN 20) SOCKETED
ECD VALVE

DWG TYPE:

PLANAR VIEW 2-D

PROJECT: B-SERIES ECD SHT. 1 OF 1 DRAWN BY: VICTOR W. L.

DATE ISSUED: 16-AUG-10 SCALE: 1:2 UNITS: INCHES

DWG NO.: ECD-75C-PVC-P-2D

MATERIAL: POLY

APPROVED BY:

PROB. SCALE PROJECTION

DIMENSIONAL TOLERANCE
XXX = ± 0.25"

REV.#: 1

SHEET SIZE: 8.5 X 11

A