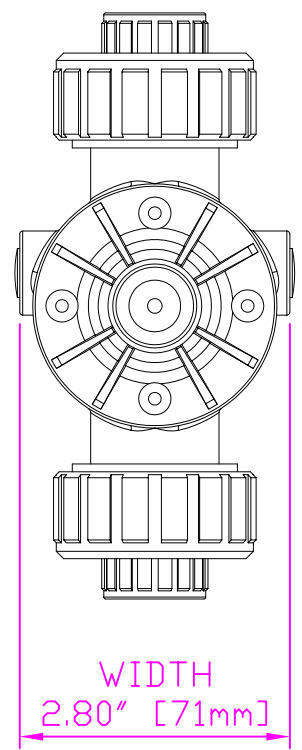
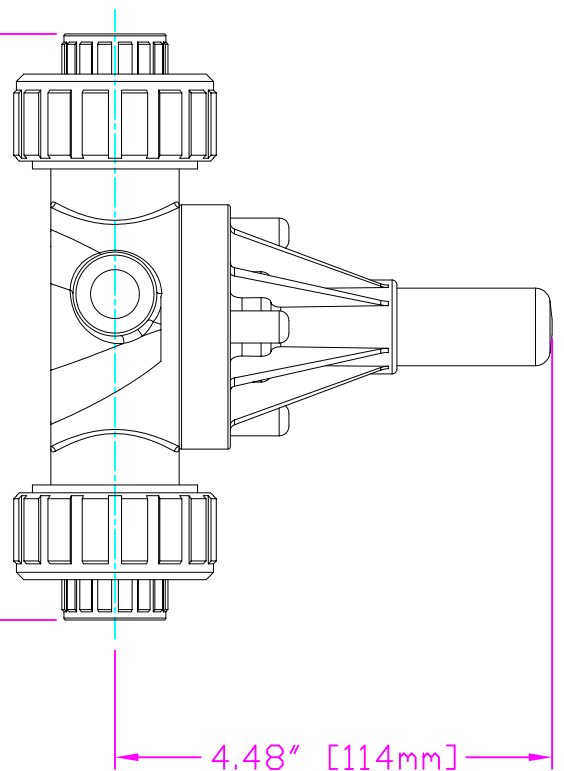


THIS DRAWING IS THE PROPERTY OF PRIMARY FLUID SYSTEMS INC. FROM WHICH A WRITTEN CONSENT FOR APPROVAL SHALL BE REQUIRED PRIOR TO COPYING.

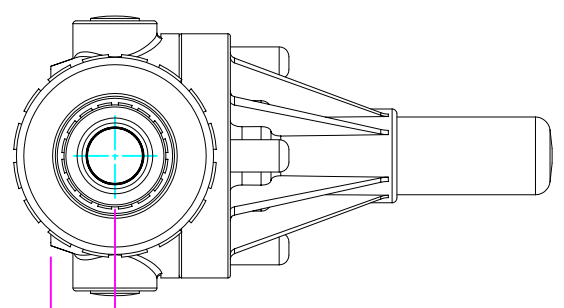
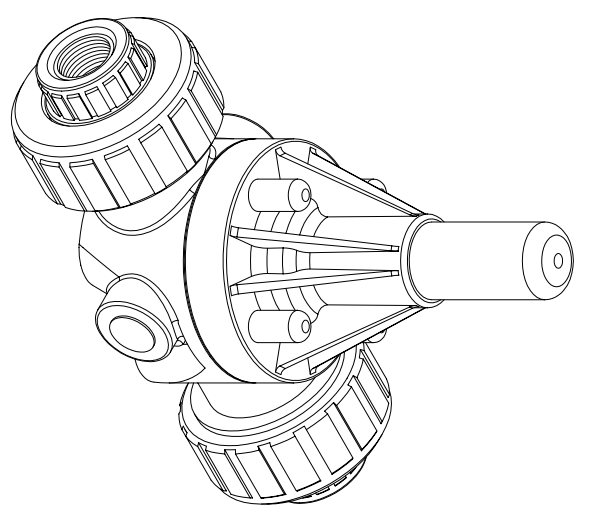


WIDTH
2.80" [71mm]



6.00" [152mm]
LENGTH (L)

4.48" [114mm]
HEIGHT (H)



0.66" [17mm]
HEIGHT (h)

THIS DRAWING WITH DIMENSIONS
APPLY TO FOLLOWING MODELS:

- ECD-38G-P-PVC-P
- ECD-38G-CPVC-T
- ECD-38G-PP-T
- ECD-38G-PVDF-T
- ECD-38H-P-PVC-P
- ECD-38H-CPVC-T
- ECD-38H-PP-T
- ECD-38H-PVDF-T

PRIMARY FLUID SYSTEMS INC.
1050 Cooke Blvd., Burlington, Ontario L7T 4A8

TITLE:
WITH UNION X 3/8" THREADED
ECD VALVE

DWG TYPE: PLANAR VIEW 2-D

PROJECT: A-SERIES ECD	SHT: 1 OF 1	DRAWN BY: VICTOR W.L.
DATE ISSUED: 26-JUL-10	SCALE: 1:2	UNITS: INCHES
DWG NO: ECD-38G-PVC-P-2D		REV.#: 1
MATERIAL: POLY		DIMENSIONAL TOLERANCE: XXX = ± 0.25"
APPROVED BY:	THIRD ANGLE PROJECTION	SHEET SIZE: 8.5 X 11

A