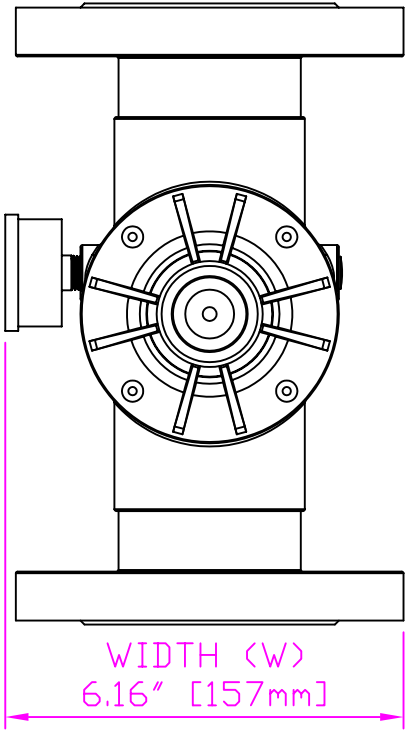
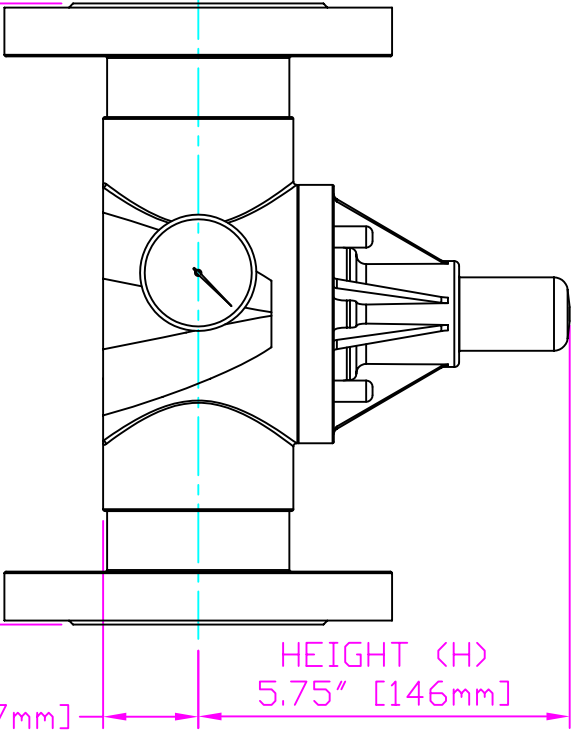


THIS DRAWING IS THE PROPERTY OF PRIMARY FLUID SYSTEMS INC. FROM WHICH A WRITTEN CONSENT FOR APPROVAL SHALL BE REQUIRED PRIOR TO COPYING.



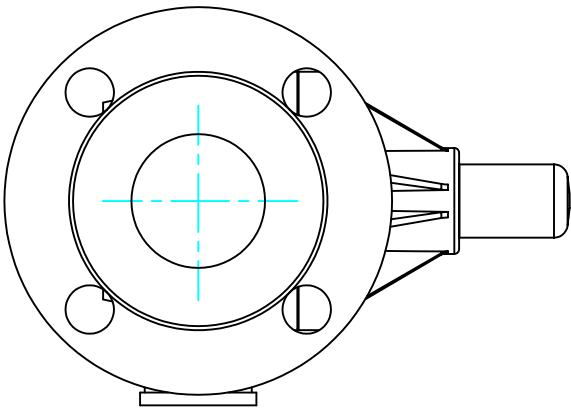
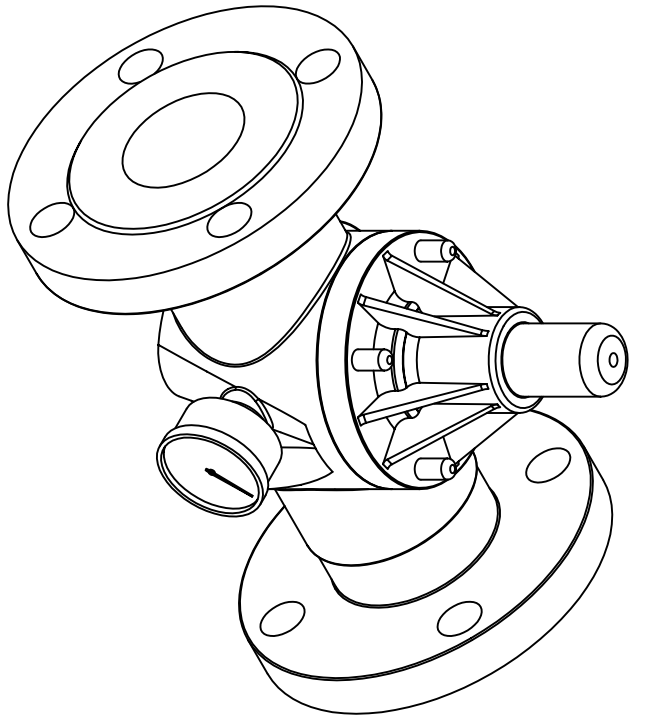
WIDTH (W)
6.16" [157mm]



HEIGHT (H)
5.75" [146mm]

9.61" [244mm]
LENGTH (L)

1.47" [37mm]
HEIGHT (h)



- THIS DRAWING WITH DIMENSIONS
APPLY TO FOLLOWING MODELS:
- ECD-200E-PVC-P-GAUGE
 - ECD-200E-CPVC-T-GAUGE
 - ECD-200E-PP-T-GAUGE
 - ECD-200E-PVDF-T-GAUGE
 - ECD-200F-PVC-P-GAUGE
 - ECD-200F-CPVC-T-GAUGE
 - ECD-200F-PP-T-GAUGE
 - ECD-200F-PVDF-T-GAUGE

PRIMARY FLUID SYSTEMS INC.

1050 Cooke Blvd., Burlington, Ontario L7T 4A8

2" (DN 50) FLANGED
ECO VALVE
WITH GAUGE

DWG TYPE:

PLANAR VIEW, 2D

PROJECT: C-SERIES ECO SHT. 1 OF 1 DRAWN BY: VICTOR V.L.

DATE ISSUED: 6-DEC-11 SCALE: 1:3 UNITS: INCHES

ECO-200E-PVC-P-GAUGE-2D

MATERIAL: POLY

APPROVED BY:



DIMENSIONAL TOLERANCE
XXX = ± 0.25"

REV.# 1
SHEET 8.5 X 11
SIZE: A