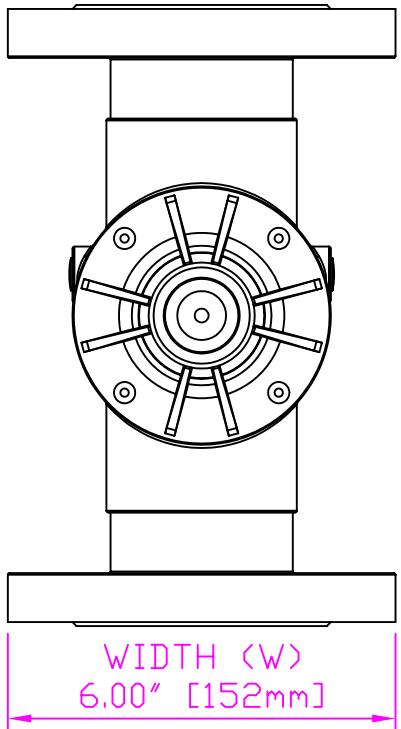
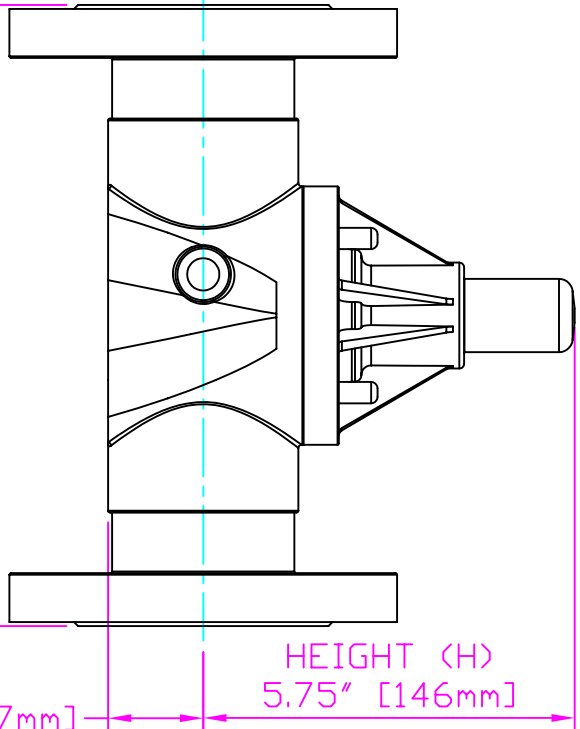


THIS DRAWING IS THE PROPERTY OF PRIMARY FLUID SYSTEMS INC. FROM WHICH A WRITTEN CONSENT FOR APPROVAL SHALL BE REQUIRED PRIOR TO COPYING.



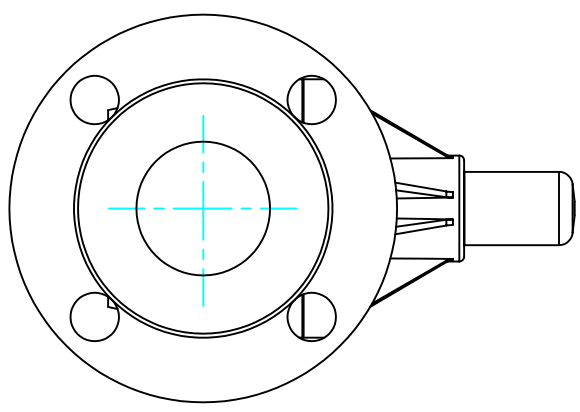
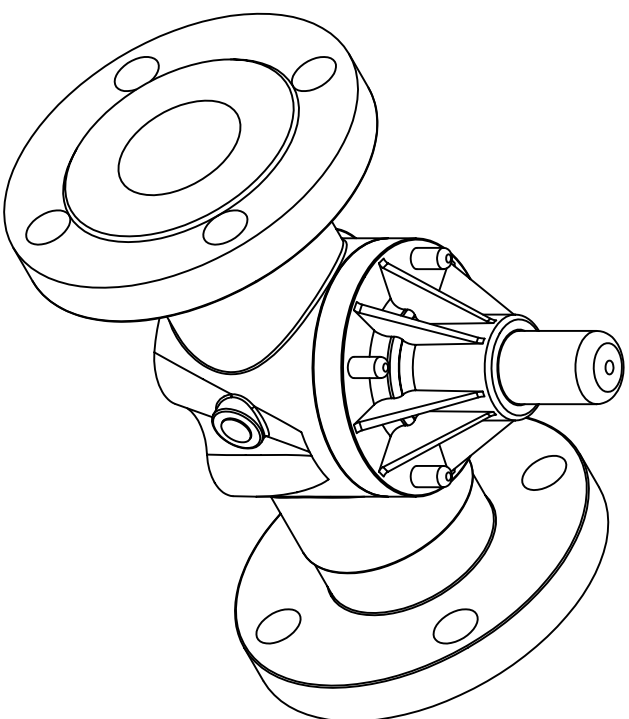
WIDTH (W)
6.00" [152mm]



HEIGHT (H)
5.75" [146mm]

1.47" [37mm]
HEIGHT (h)

9.61" [244mm]
LENGTH (L)



- THIS DRAWING WITH DIMENSIONS
APPLY TO FOLLOWING MODELS:
- ECD-200E-PVC-P
 - ECD-200E-CPVC-T
 - ECD-200E-PP-T
 - ECD-200E-PVDF-T
 - ECD-200F-PVC-P
 - ECD-200F-CPVC-T
 - ECD-200F-PP-T
 - ECD-200F-PVDF-T

PRIMARY FLUID SYSTEMS INC.

1050 Cooke Blvd., Burlington, Ontario L7T 4A8

2" (DN 50) FLANGED
ECO VALVE

| | | | | | |
|---------------------------|--|-----------------------------------|--|--|--|
| PROJECT: C-SERIES ECO | | SHT. 1 OF 1 | | DRAWN BY: VICTOR W. | |
| DATE ISSUED: 6-DEC-11 | | SCALE: 1:3 | | UNITS: INCHES | |
| MATERIAL: PLY | | ECCO-200E-PVC-P-2D | | REV.#: 1 | |
| APPROVED BY: | | THIRD ANGLE PROJECTION | | DIMENSIONAL TOLERANCE XXX = ± 0.25" | |
| DVG TYPE: PLANAR VIEW, 2D | | TITLE: PRIMARY FLUID SYSTEMS INC. | | SHEET SIZE: 8.5 X 11 | |

A