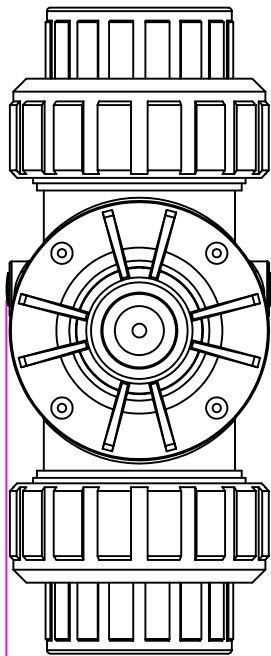
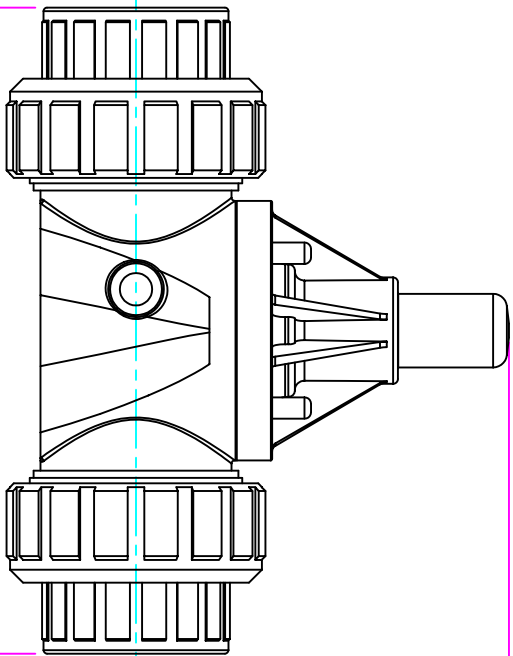


THIS DRAWING IS THE PROPERTY OF PRIMARY FLUID SYSTEMS INC. FROM WHICH A WRITTEN CONSENT FOR APPROVAL SHALL BE REQUIRED PRIOR TO COPYING.

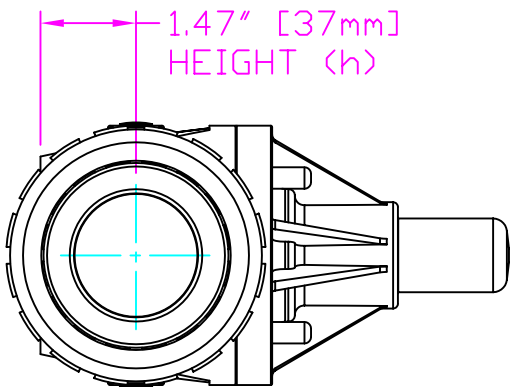
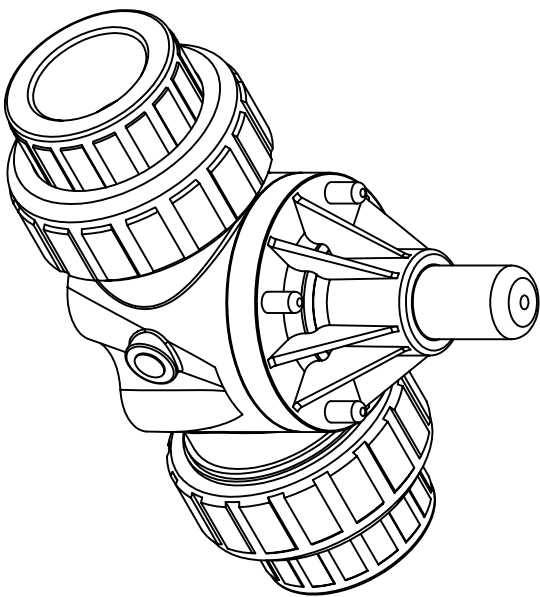


WIDTH (W)
4.10" [104mm]



9.96" [253mm]
LENGTH (L)

5.75" [146mm]
HEIGHT (H)



1.47" [37mm]
HEIGHT (h)

THIS DRAWING WITH DIMENSIONS
APPLY TO FOLLOWING MODELS:

- ECD-1501-PVC-P
- ECD-1501-GPVC-T
- ECD-1501-PP-T
- ECD-1501-PVDF-T
- ECD-150J-PVC-P
- ECD-150J-GPVC-T
- ECD-150J-PP-T
- ECD-150J-PVDF-T

PRIMARY FLUID SYSTEMS INC.

1050 Cooke Blvd, Burlington, Ontario L7T 4A8

UNION X 1/2" (DN 40) SOCKETED
ECD VALVE

PROJECT: C-SERIES ECD		SHT. 1 OF 1		DRAWN BY: VICTOR V.L.	
DATE ISSUED: 24-NOV-11		SCALE: 1:3		UNITS: INCHES	
MATERIAL: POLY		REV.#: 0		DIMENSIONAL TOLERANCE XXX = ± 0.25"	
APPROVED BY:		THIRD ANGLE PROJECTION		SHEET SIZE: 8.5 X 11	
DVG TYPE: PLANAR VIEW 2D		TITLE: PRIMARY FLUID SYSTEMS INC.		A	