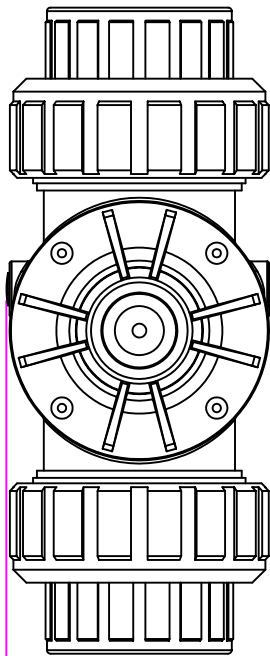
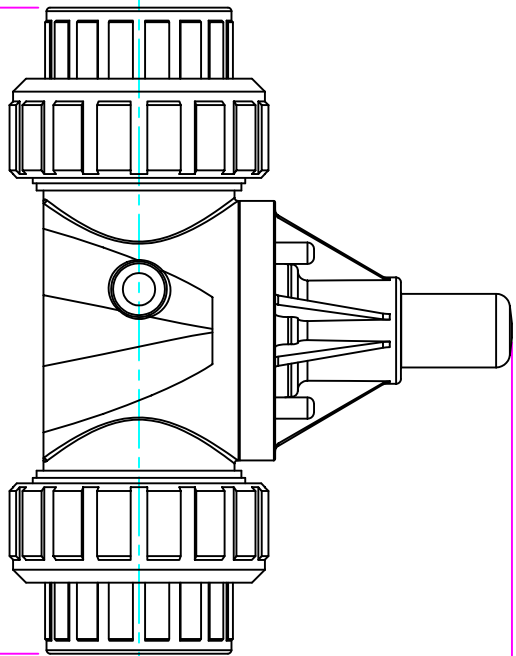


THIS DRAWING IS THE PROPERTY OF PRIMARY FLUID SYSTEMS INC. FROM WHICH A WRITTEN CONSENT FOR APPROVAL SHALL BE REQUIRED PRIOR TO COPYING.

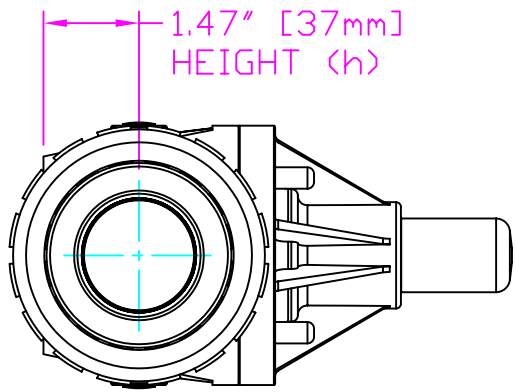
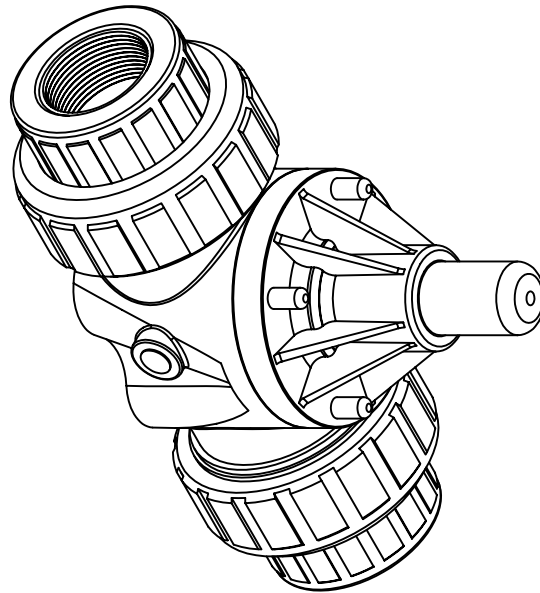


WIDTH (W)  
4.10" [104mm]



9.96" [253mm]  
LENGTH (L)

5.75" [146mm]  
HEIGHT (H)



1.47" [37mm]  
HEIGHT (h)

- THIS DRAWING WITH DIMENSIONS  
APPLY TO FOLLOWING MODELS:
- ECD-150G-PVC-P
  - ECD-150G-CPVC-T
  - ECD-150G-PP-T
  - ECD-150G-PVDF-T
  - ECD-150H-PVC-P
  - ECD-150H-CPVC-T
  - ECD-150H-PP-T
  - ECD-150H-PVDF-T

**PRIMARY FLUID SYSTEMS INC.**

1050 Cooke Blvd, Burlington, Ontario L7T 4A8

UNION X 1/2" THREADED  
ECD VALVE

DWG TYPE	PLANAR VIEW 2D
TITLE	UNION X 1/2" THREADED ECD VALVE
PROJECT	C-SERIES ECD
DATE ISSUED	24-NOV-11
DWG NO.	ECO-150G-PVC-P-2D
MATERIAL	PLY
APPROVED BY	
SHR. 1 OF 1	DRAWN BY: VICTOR V.L.
SCALE: 1:3	UNITS: INCHES
REVISION	0
DIMENSIONAL TOLERANCE	XXX = ± 0.25"
SHEET	8.5 X 11
SIZE	A