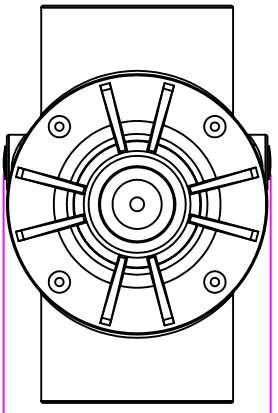
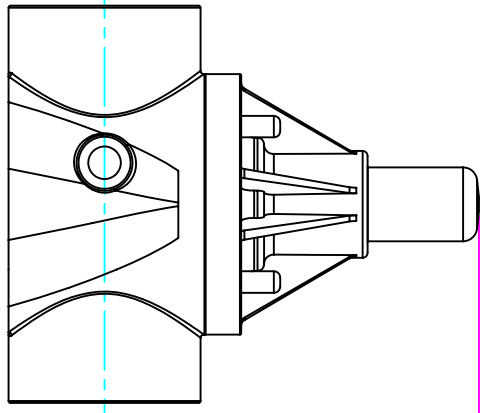
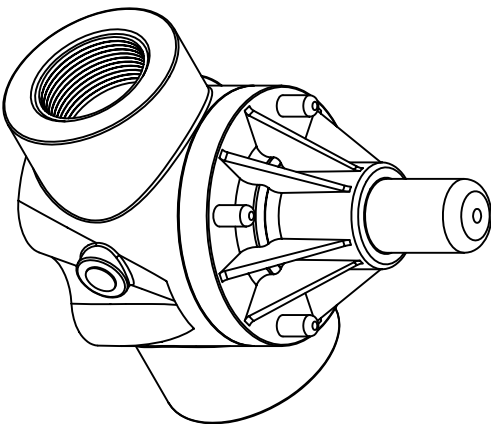


THIS DRAWING IS THE PROPERTY OF PRIMARY FLUID SYSTEMS INC. FROM WHICH A WRITTEN CONSENT FOR APPROVAL SHALL BE REQUIRED PRIOR TO COPYING.

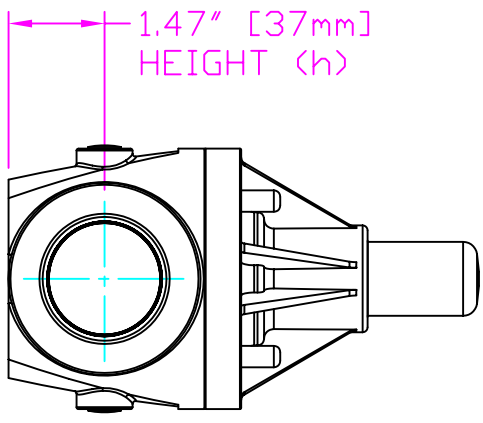


WIDTH (W)  
4.10" [104mm]



LENGTH (L)  
6.10" [155mm]

5.75" [146mm]  
HEIGHT (H)



1.47" [37mm]  
HEIGHT (h)

THIS DRAWING WITH DIMENSIONS  
APPLY TO FOLLOWING MODELS:

- ECD-150A-PVC-P
- ECD-150A-CPVC-T
- ECD-150A-PP-T
- ECD-150A-PVDF-T
- ECD-150B-PVC-P
- ECD-150B-CPVC-T
- ECD-150B-PP-T
- ECD-150B-PVDF-T

**PRIMARY FLUID SYSTEMS INC.**

1050 Cooke Blvd., Burlington, Ontario L7T 4A8

TITLE:  
**1 1/2" THREADED  
ECD VALVE**

DWG TYPE:  
PLANAR VIEW 2D

PROJECT: C-SERIES ECD	SHT: 1 OF 1	DRAWN BY: VICTOR W.L.
DATE ISSUED: 24-NDV-11	SCALE: 1:3	UNITS: INCHES
DWG NO: ECO-150A-PVC-P-2D		REV.#: 0
MATERIAL: POLY		DIMENSIONAL TOLERANCE: ± 0.25"
APPROVED BY:	THIRD ANGLE PROJECTION:	SHEET SIZE: 8.5 X 11
		<b>A</b>