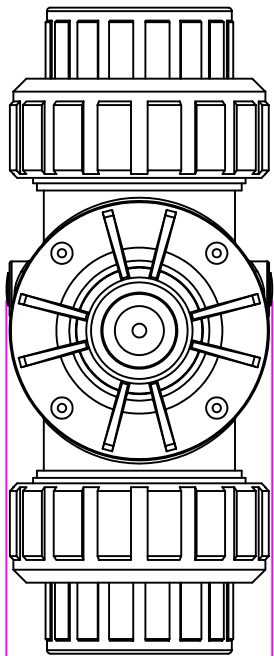
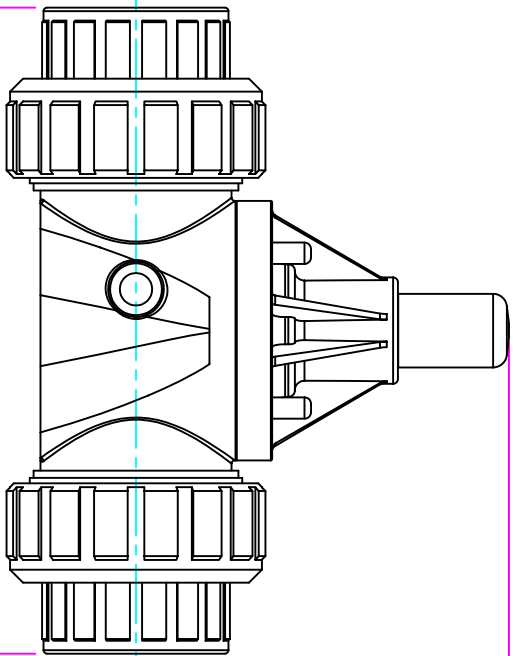


THIS DRAWING IS THE PROPERTY OF PRIMARY FLUID SYSTEMS INC. FROM WHICH A WRITTEN CONSENT FOR APPROVAL SHALL BE REQUIRED PRIOR TO COPYING.

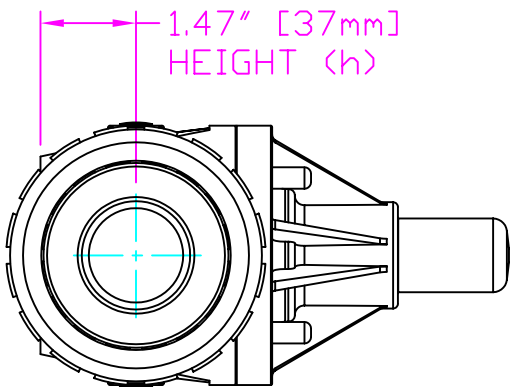
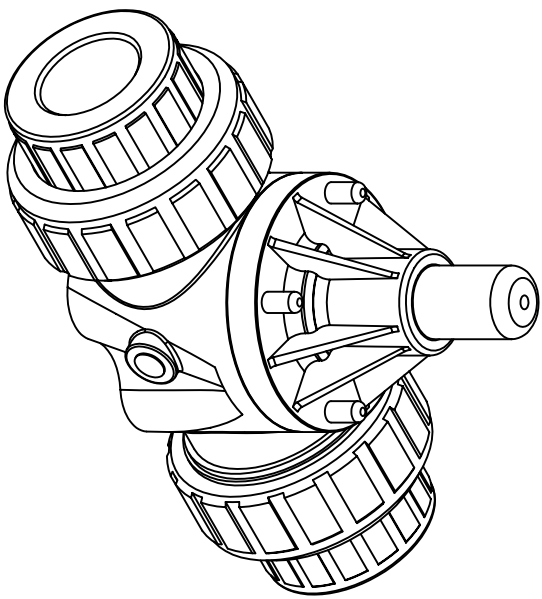


WIDTH (W)
4.10" [104mm]



9.96" [253mm]
LENGTH (L)

5.75" [146mm]
HEIGHT (H)



1.47" [37mm]
HEIGHT (h)

- THIS DRAWING WITH DIMENSIONS
APPLY TO FOLLOWING MODELS:
- ECD-125I-PVC-P
 - ECD-125I-GPVC-T
 - ECD-125I-PP-T
 - ECD-125I-PVDF-T
 - ECD-125J-PVC-P
 - ECD-125J-GPVC-T
 - ECD-125J-PP-T
 - ECD-125J-PVDF-T

PRIMARY FLUID SYSTEMS INC.

1050 Cooke Blvd, Burlington, Ontario L7T 4A8

UNION X 1 1/2" (DN 32) SOCKETED
ECD VALVE

TITLE: UNION X 1 1/2" (DN 32) SOCKETED
ECD VALVE
DVG TYPE: PLANAR VIEW 2D

PROJECT: C-SERIES ECD	SHT. 1 OF 1	DRAWN BY: VICTOR V.L.
DATE ISSUED: 23-NOV-11	SCALE: 1:3	UNITS: INCHES
MATERIAL: POLY		
ECO-125I-PVC-P-2D		
APPROVED BY:		
TRIM TO MATCH PROJECTION		
DIMENSIONAL TOLERANCE XXX = ± 0.25"		
REV.#: 0		
SHEET: 8.5 X 11		
SIZE: A		