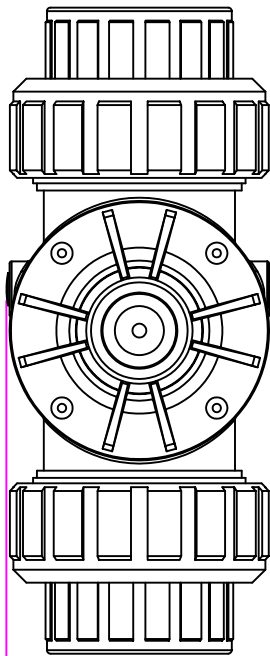
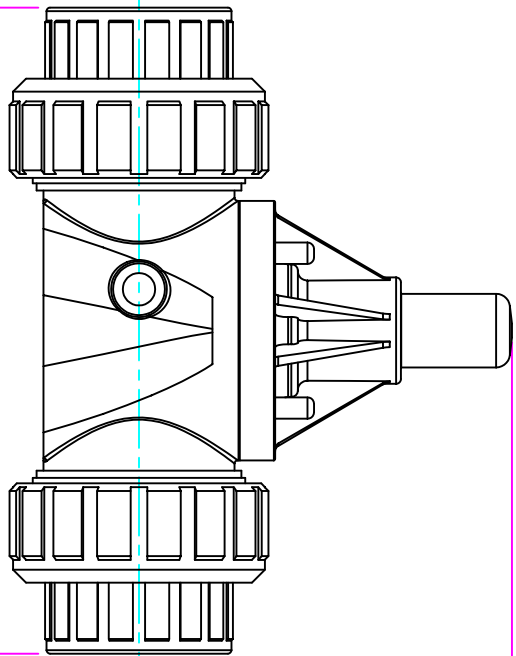


THIS DRAWING IS THE PROPERTY OF PRIMARY FLUID SYSTEMS INC. FROM WHICH A WRITTEN CONSENT FOR APPROVAL SHALL BE REQUIRED PRIOR TO COPYING.

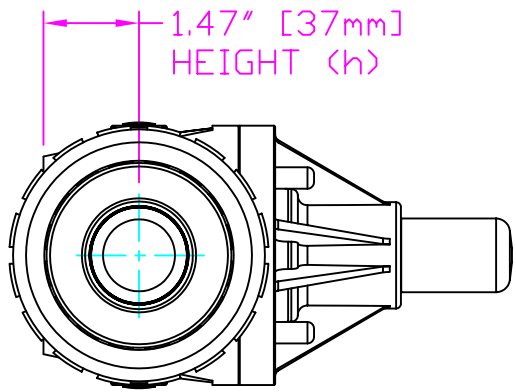
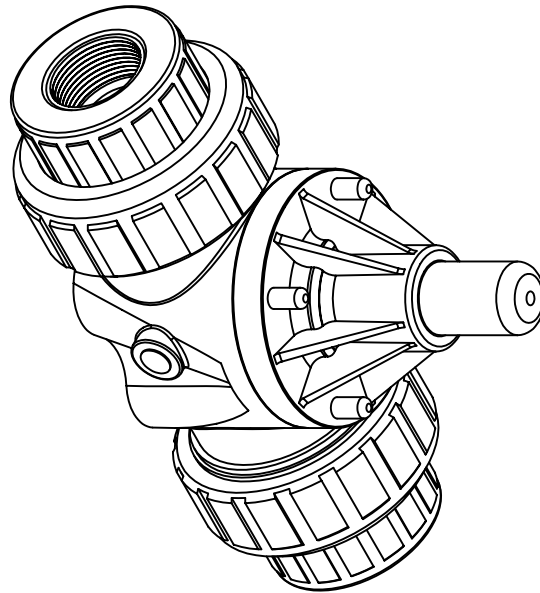


WIDTH (W)
4.10" [104mm]



9.96" [253mm]
LENGTH (L)

5.75" [146mm]
HEIGHT (H)



1.47" [37mm]
HEIGHT (h)

THIS DRAWING WITH DIMENSIONS
APPLY TO FOLLOWING MODELS:

- ECD-125G-PVC-P
- ECD-125G-CPVC-T
- ECD-125G-PP-T
- ECD-125G-PVDF-T
- ECD-125H-PVC-P
- ECD-125H-CPVC-T
- ECD-125H-PP-T
- ECD-125H-PVDF-T

PRIMARY FLUID SYSTEMS INC.

1050 Cooke Blvd, Burlington, Ontario L7T 4A8

UNION X 1/2" THREADED
ECD VALVE

PROJECT: C-SERIES ECD		SHT. 1 OF 1	DRAWN BY: VICTOR V.L.
DATE ISSUED: 23-NOV-11	SCALE: 1:3	UNITS: INCHES	REV.#: 0
MATERIAL: PLY		DIMENSIONAL TOLERANCE XXX = ± 0.25"	
APPROVED BY:	THIRD ANGLE PROJECTION	SHEET SIZE: 8.5 X 11	
PLANAR VIEW 2D		A	