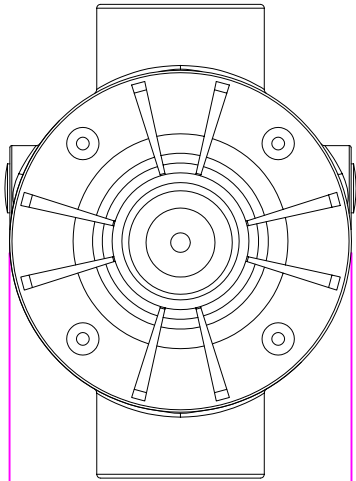
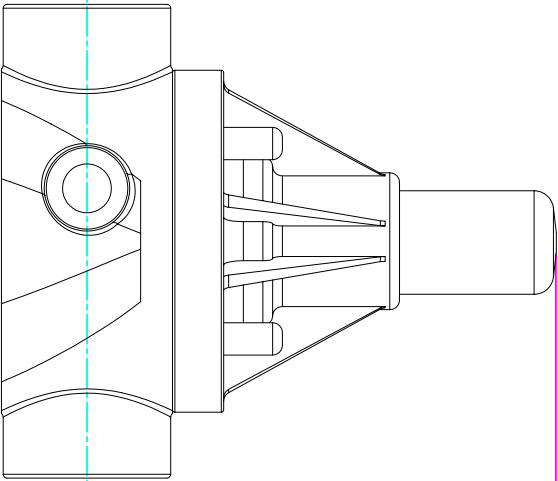
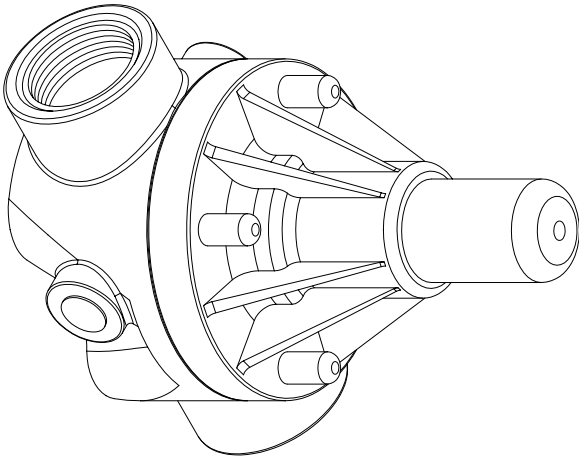


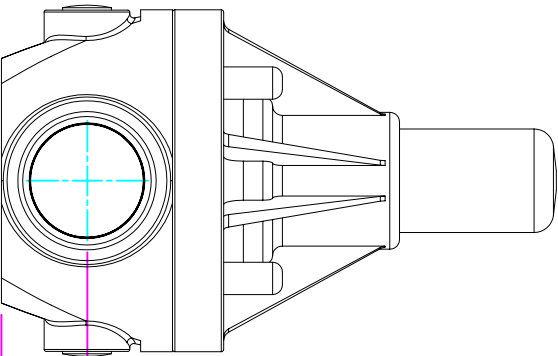
THIS DRAWING IS THE PROPERTY OF PRIMARY FLUID SYSTEMS INC. FROM WHICH A WRITTEN CONSENT FOR APPROVAL SHALL BE REQUIRED PRIOR TO COPYING.



WIDTH
3.50" [89mm]



4.80" [122mm]
HEIGHT (H)



0.88" [22mm]
HEIGHT (h)

ECD-100A-PVC-P
ECD-100A-CPVC-T
ECD-100A-PP-T
ECD-100A-PVDF-T
ECD-100B-PVC-P
ECD-100B-CPVC-T
ECD-100B-PP-T
ECD-100B-PVDF-T

THIS DRAWING WITH DIMENSIONS
APPLY TO FOLLOWING MODELS:

4.85" [123mm]
LENGTH (L)

PRIMARY FLUID SYSTEMS INC.

1050 Cooke Blvd., Burlington, Ontario L7T 4A8

TITLE
1" THREADED
ECD VALVE

DWG TYPE:

PLANAR VIEW 2-D

PROJECT: B-SERIES ECD SHT. 1 OF 1 DRAWN BY: VICTOR W.L.
DATE ISSUED: 17-AUG-10 SCALE: 1:2 UNITS: INCHES
DWG. NO. ECD-100A-PVC-P-2D REV.# 1

MATERIAL: POLY

APPROVED BY:

ISO 9000 ANGLE PROJECTION

DIMENSIONAL TOLERANCE
XXX = ± 0.25"

8.5 X 11
SHEET
SIZE:
A