

ECO VALVE

Backpressure/Pressure Sustaining and Pressure Relief Valves 2013 Price List

Table of Contents

Page	Page
2	9
2	10
3	15
4	16
4	17
5	18
5	19
6	20
7	
8	

HOW TO ORDER

e.g.: Part # **ECO50A-PVDF-V-NL**

ECO - 50A - PVDF - V - NL

Back Pressure/Pressure Relief Valve, 2 Port Design

H = High Pressure
T = High Temperature
M = 20 – 230 psi Range

Sizes Available:

25 = 8 DN = 1/4"
38 = 10 DN = 3/8"
50 = 15 DN = 1/2"
55 = 15 DN = 1/2" (High Flow)
75 = 20 DN = 3/4"
100 = 25 DN = 1"
110 = 25 DN = 1" (High Flow)
125 = 32 DN = 1 1/4"
150 = 40 DN = 1 1/2"
200 = 50 DN = 2"
220 = 50 DN = 2" (High Flow)
300 = 75 DN = 3"
400 = 100 DN = 4"

Connections Available:

A = NPT
B = BSPT
C = Socket weld N.A.
D = Socket weld Metric
E = Flanged ANSI
F = Flanged DIN
G = Union X NPT (plastic only)
H = Union X BSPT (plastic only)
I = Union X Socket N.A. (plastic only)
J = Union X Socket Metric (plastic only)

Options

NL = gauge port – NPT (left to right flow)
BL = gauge port – BSP (left to right flow)
NR = gauge port – NPT (right to left flow)
BR = gauge port – BSP (right to left flow)

Diaphragms

P = PVC (standard on all PVC valves)
T = PTFE backed EPDM (standard on all except PVC valves)
E = EPDM
V = Viton

Body Materials

PVC = polyvinylchloride
PP = polypropylene
PVDF = polyvinylidene fluoride
CPVC = chlorinated polyvinyl chloride (Corzan)
S/S = 316L Stainless Steel

Note: Viton "O" ring seals are standard on all union style valves. EPDM and PTFE encapsulated rings are available for an additional charge. Please contact our sales order desk for pricing.

Distributed by:

Manufactured by:



PRIMARY FLUID SYSTEMS INC. TEL (905) 333-8743
FAX (905) 333-8746

Toll Free 1-866-324-6422

http://www.ecovalve.ca E-Mail: sales@ecovalve.ca

ECO VALVE

Back Pressure/Pressure Sustaining/Pressure Relief Valves

Standard Features:

- ✓ CPVC (Corzan) high temperature top
- ✓ No moving parts in wetted chamber; superior choice for “dirty” fluid applications
- ✓ High flow capacity with lower pressure drop
- ✓ Optional diaphragm materials
- ✓ Sizes ¼” to 4” (8 DN to 100 DN)
- ✓ Field adjustable pressure range of 7-150 PSIG (48-1034 kPa)
- ✓ Configured for gauge port in either flow direction (on upstream side of valve)
- ✓ Available in 10 different configurations, threaded, socket, union and flanged
- ✓ Five materials of construction to choose from

Prices below are for 150# rated valves only.

Valve Options/Documentation/Testing

All Models add suffix **-NL** to Valve model number (for left to right flow) plus \$40.00 **(Please specify NPT or BSPT)**

All Models add suffix **-NR** to Valve model number (for right to left flow) plus \$40.00 **(Please specify NPT or BSPT)**

Diaphragm Options (EPDM, Viton, PVC)

List Adder \$ N/C

Certificate of Conformance

Net Adder \$ 8.00 /per model

Metallurgical Test Reports (Alloy wetted bodies)

Net Adder \$ 11.00/per model

Air Leak Test Report

Net Adder \$ 26.00/per valve

Hydrostatic Leak Test

Net Adder \$ 132.00/per valve

PMI Testing (Alloy wetted bodies)

Net Adder \$ Call factory

Refer to Optional Equipment Price List for additional accessories (i.e. gauges) on page 9.

The above List Prices are for sale based on the terms described on page 20.

Threaded/Socketweld Type Connections

(*) = NPT = A

(*) = BSPT = B

(*) = Socketweld ASTM = C

(*) = Socketweld DIN = D

CODE A

Size Model	-PVC	-CPVC	-PP	-PVDF	-SS
ECO-25 (*) ¼"	\$ 172.00	\$ 216.00	\$ 177.00	\$ 316.00	\$ 358.00
ECO-38 (*) 3/8"	\$ 191.00	\$ 228.00	\$ 197.00	\$ 401.00	\$ 375.00
ECO-50 (*) ½"	\$ 204.00	\$ 275.00	\$ 242.00	\$ 442.00	\$ 493.00
ECO -55 (*) ½" High Flow	\$ 282.00	\$ 356.00	\$ 295.00	\$ 537.00	\$ 596.00
ECO-75 (*) ¾"	\$ 309.00	\$ 376.00	\$ 317.00	\$ 668.00	\$ 625.00
ECO-100 (*) 1"	\$ 379.00	\$ 560.00	\$ 409.00	\$ 737.00	\$ 821.00
ECO-110 (*) 1" High Flow	\$ 611.00	\$ 679.00	\$ 654.00	\$ 985.00	\$ 1,169.00
ECO-125 (*) 1 ¼"	\$ 658.00	\$ 726.00	\$ 681.00	\$ 1,038.00	\$ 1,232.00
ECO-150 (*) 1 ½"	\$ 723.00	\$ 797.00	\$ 757.00	\$ 1,153.00	\$ 1,368.00
ECO-200 (*) 2"	\$ 940.00	\$ 1,356.00	\$ 987.00	\$ 2,006.00	\$ 2,096.00

Union Type Connections

- (*) = NPT = G
 (*) = BSPT = H
 (*) = Socketweld ASTM = I
 (*) = Socketweld DIN = J

CODE A

Size Model	-PVC	-CPVC	-PP	-PVDF
ECO-25 (*) 1/4" UNION	\$ 186.00	\$ 237.00	\$ 189.00	\$ 351.00
ECO-38 (*) 3/8" UNION	\$ 202.00	\$ 249.00	\$ 208.00	\$ 440.00
ECO-50 (*) 1/2" UNION	\$ 253.00	\$ 347.00	\$ 273.00	\$ 495.00
ECO -55 (*) 1/2" UNION High Flow	\$ 311.00	\$ 368.00	\$ 316.00	\$ 584.00
ECO-75 (*) 3/4" UNION	\$ 337.00	\$ 416.00	\$ 347.00	\$ 732.00
ECO-100 (*) 1" UNION	\$ 421.00	\$ 579.00	\$ 432.00	\$ 789.00
ECO-110 (*) 1" UNION High Flow	\$ 679.00	\$ 755.00	\$ 726.00	\$ 1,095.00
ECO-125 (*) 1 1/4" UNION	\$ 731.00	\$ 818.00	\$ 757.00	\$ 1,154.00
ECO-150 (*) 1 1/2" UNION	\$ 803.00	\$ 885.00	\$ 841.00	\$ 1,281.00
ECO-200 (*) 2" UNION	\$ 1,044.00	\$ 1,506.00	\$ 1,097.00	\$ 2,229.00

Flanged, 150# ANSI and DIN

This series incorporates 150# socket-welded flanges.

- (*) = Flanged ANSI = E
 (*) = Flanged DIN = F

CODE A

Size Model	-PVC	-CPVC	-PP	-PVDF	-SS
ECO-25 (*) 1/4" FLG'D	N/A	N/A	N/A	N/A	N/A
ECO-38 (*) 3/8" FLG'D	N/A	N/A	N/A	N/A	N/A
ECO-50 (*) 1/2" FLG'D	\$ 316.00	\$ 421.00	\$ 400.00	\$ 836.00	\$ 879.00
ECO -55 (*) 1/2" FLG'D High Flow	\$ 368.00	\$ 462.00	\$ 564.00	\$ 957.00	\$1,040.00
ECO-75 (*) 3/4" FLG'D	\$ 405.00	\$ 489.00	\$ 659.00	\$1,045.00	\$1,093.00
ECO-100 (*) 1" FLG'D	\$ 523.00	\$ 700.00	\$ 758.00	\$1,419.00	\$1,459.00
ECO-110 (*) 1" FLG'D High Flow	\$ 732.00	\$ 821.00	\$ 785.00	\$1,669.00	\$1,854.00
ECO-125 (*) 1 1/4" FLG'D	\$ 842.00	\$ 944.00	\$1,035.00	\$1,784.00	\$2,209.00
ECO-150 (*) 1 1/2" FLG'D	\$ 940.00	\$1,036.00	\$1,180.00	\$1,895.00	\$2,516.00
ECO-200 (*) 2" FLG'D	\$1,208.00	\$1,695.00	\$1,695.00	\$3,969.00	\$3,418.00

High Pressure Series

Pressure setting range from 50 to 350 psig

This series incorporates a metallic top, viton diaphragm, high pressure spring with metallic top and bottom discs.

Viton diaphragm is the standard, optional diaphragm material available upon request.

The metallic top is made of aluminum, optional metallic materials available upon request.

CODING:

eg: ECO Valve, Back Pressure, High Pressure valve, ¼”npt, 316 S/S wetted material, the Part # ECOH-25A-S/S

See ordering codes on first page for optional materials, connections and styles.

For flanged or socket weld connections please contact factory for pricing.

- (*) = NPT = A
- (*) = BSPT = B
- (*) = Socketweld ASTM =C
- (*) = Socketweld DIN =D
- (*) = Flanged ANSI = E
- (*) = Flanged DIN = F

CODE A

Size Model	-S/S	-ALL20	-HAST
ECOH-25 (*) ¼”	\$ 550.00	C/F	C/F
ECOH-38 (*) 3/8”	\$ 560.00	C/F	C/F
ECOH-50 (*) ½”	\$ 602.00	C/F	C/F
ECOH -55 (*) ½” High Flow	\$ 672.00	C/F	C/F
ECOH-75 (*) ¾”	\$ 699.00	C/F	C/F
ECOH-100 (*) 1”	\$ 879.00	C/F	C/F
ECOH-110 (*) 1” High Flow	\$ 1,041.00	C/F	C/F
ECOH-125 (*) 1 ¼”	\$ 1,240.00	C/F	C/F
ECOH-150 (*) 1 ½”	\$ 1,577.00	C/F	C/F
ECOH-200 (*) 2”	\$ 2,289.00	C/F	C/F

C/F = Consult Factory

Optional Stainless Steel Top Adder

Model + Code	ECOH-25 (*) ¼” ECOH-38 (*) 3/8” ECOH-50 (*) ½”	ECOH -55 (*) ½” High Flow ECOH-75 (*) ¾” ECOH-100 (*) 1”	ECOH-110 (*) 1” High Flow ECOH-125 (*) 1 ¼” ECOH-150 (*) 1 ½” ECOH-200 (*) 2”
316S/S = S	\$ 125.00	\$ 160.00	\$ 200.00

High Temperature Series

This series is designed for temperature applications that exceed the maximum range of 140°F (60°C) to 190°F (88°C) rating of our standard valves with CPVC tops. These valves come standard with an aluminum top, viton diaphragm and metallic spring discs.

This model valve has a maximum working temperature of 350°F (177°C).

CODING:

eg: ECO Valve, Back Pressure, High Temperature valve, 1/2"npt, 316 S/S wetted material, the Part # ECOT-50A-S/S

See ordering codes on first page for optional materials, connections and styles.

For flanged or socket weld connections please contact factory for pricing.

CODE A

- (*) = NPT = A
- (*) = BSPT = B
- (*) = Socketweld ASTM =C
- (*) = Socketweld DIN =D
- (*) = Flanged ANSI = E
- (*) = Flanged DIN = F

Size Model	-S/S	-ALL20	-HAST
ECOT-25 (*) 1/4"	\$ 529.00	C/F	C/F
ECOT-38 (*) 3/8"	\$ 556.00	C/F	C/F
ECOT-50 (*) 1/2"	\$ 581.00	C/F	C/F
ECOT-55 (*) 1/2" High Flow	\$ 648.00	C/F	C/F
ECOT-75 (*) 3/4"	\$ 675.00	C/F	C/F
ECOT-100 (*) 1"	\$ 875.00	C/F	C/F
ECOT-110 (*) 1" High Flow	\$ 997.00	C/F	C/F
ECOT-125 (*) 1 1/4"	\$ 1,205.00	C/F	C/F
ECOT-150 (*) 1 1/2"	\$ 1,529.00	C/F	C/F
ECOT-200 (*) 2"	\$ 2,200.00	C/F	C/F

C/F = Consult Factory

Mid Range Non Metallic

20 – 230 psig Range

Available in PVC, CPVC, PP and PVDF – List Adder \$ 50.00

Temperature Correction Factors: Thermoplastics

Temperature Effects: Thermoplastics and thermosets will decrease in tensile strength as the temperature increases: therefore, the working pressure must be reduced accordingly. The following factors will apply:

Example:

Maximum Pressure for PVDF valve at 280°F (138°C)

Factor = 0.16 x 150psig = 24psig max. pressure

Factor = 0.16 x 1034kPa = 165.44kPa max. pressure

The maximum pressure rating for valves regardless of size is 150 PSIG (1034 kPa) at 73° F (22°C)

NR = not recommended

Primary Fluid Systems, Inc. takes no responsibility for the enclosed data.

Operating Temperatures		{Factors}			
F	C	PVC	CPVC	PP	PVDF
70	21	1.00	1.00	1.00	1.00
80	27	1.00	1.00	1.00	1.00
90	32	1.00	1.00	1.00	1.00
100	38	.90	1.00	1.00	1.00
110	43	.83	1.00	.91	1.00
115	46	.75	1.00	.87	1.00
120	49	.66	1.00	.83	1.00
125	52	.58	.97	.79	1.00
130	54	.50	.95	.75	1.00
140	60	.33	.90	.66	1.00
150	66	NR	.80	.60	.97
160	71	NR	.70	.53	.93
170	77	NR	.60	.43	.86
180	82	NR	.50	.33	.80
200	93	NR	.33	NR	.66
210	99	NR	NR	NR	.60
240	116	NR	NR	NR	.40
280	138	NR	NR	NR	.16

Exploded View – Back Pressure / Pressure Relief Valve

1/4" (ECO-25), 3/8" (ECO-38), 1/2" (ECO-50) ECO Valves

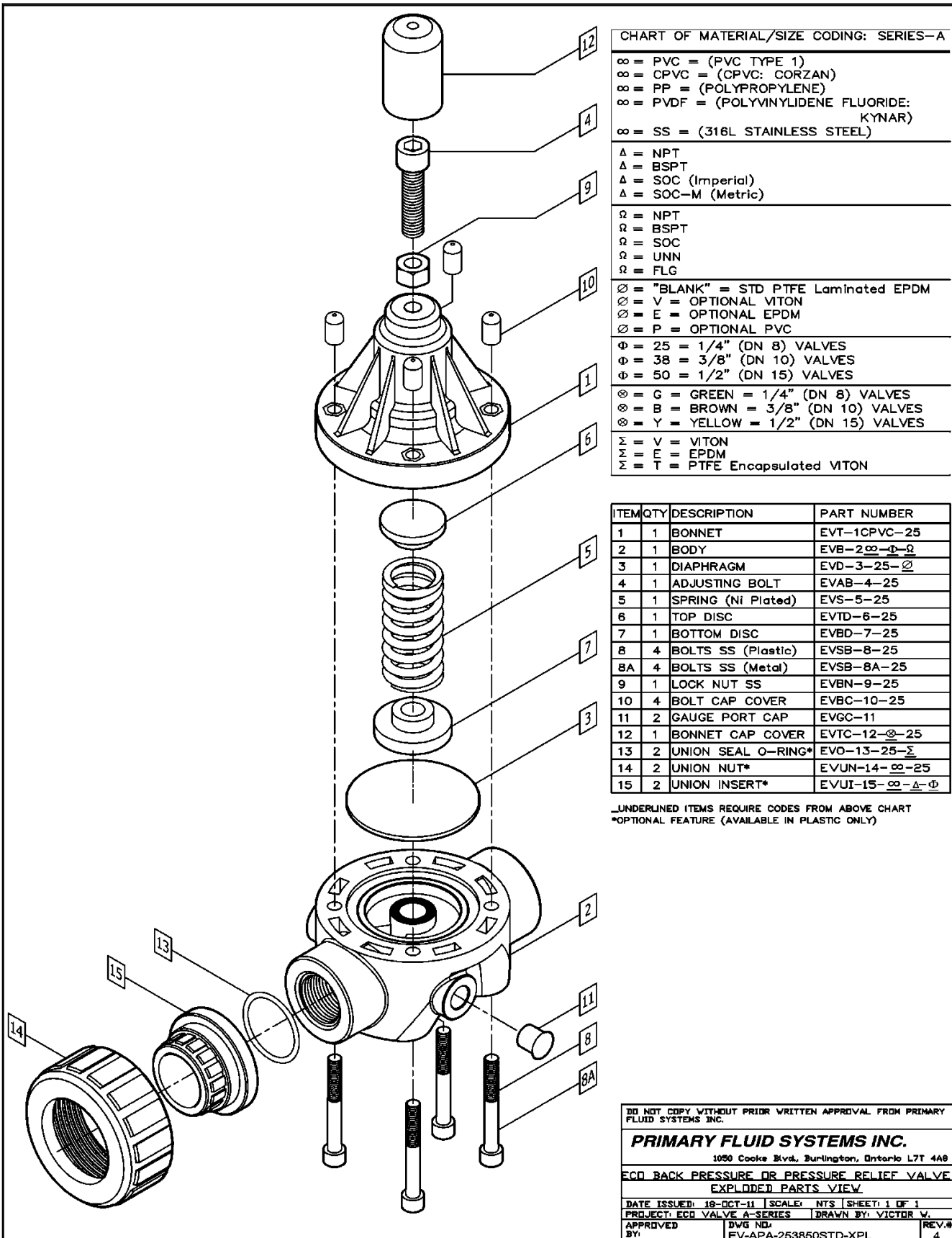


CHART OF MATERIAL/SIZE CODING: SERIES-A

- ∞ = PVC = (PVC TYPE 1)
 - ∞ = CPVC = (CPVC: CORZAN)
 - ∞ = PP = (POLYPROPYLENE)
 - ∞ = PVDF = (POLYVINYLIDENE FLUORIDE: KYNAR)
 - ∞ = SS = (316L STAINLESS STEEL)
- Δ = NPT
 - Δ = BSPT
 - Δ = SOC (Imperial)
 - Δ = SOC-M (Metric)
- Ω = NPT
 - Ω = BSPT
 - Ω = SOC
 - Ω = UNN
 - Ω = FLG
- ∅ = "BLANK" = STD PTFE Laminated EPDM
 - ∅ = V = OPTIONAL VITON
 - ∅ = E = OPTIONAL EPDM
 - ∅ = P = OPTIONAL PVC
- Φ = 25 = 1/4" (DN 8) VALVES
 - Φ = 38 = 3/8" (DN 10) VALVES
 - Φ = 50 = 1/2" (DN 15) VALVES
- ⊗ = G = GREEN = 1/4" (DN 8) VALVES
 - ⊗ = B = BROWN = 3/8" (DN 10) VALVES
 - ⊗ = Y = YELLOW = 1/2" (DN 15) VALVES
- Σ = V = VITON
 - Σ = E = EPDM
 - Σ = T = PTFE Encapsulated VITON

ITEM	QTY	DESCRIPTION	PART NUMBER
1	1	BONNET	EVT-1CPVC-25
2	1	BODY	EVB-2∞-Φ-Ω
3	1	DIAPHRAGM	EVD-3-25-∅
4	1	ADJUSTING BOLT	EVAB-4-25
5	1	SPRING (Ni Plated)	EVS-5-25
6	1	TOP DISC	EVTD-6-25
7	1	BOTTOM DISC	EVBD-7-25
8	4	BOLTS SS (Plastic)	EVSB-8-25
8A	4	BOLTS SS (Metal)	EVSB-8A-25
9	1	LOCK NUT SS	EVBN-9-25
10	4	BOLT CAP COVER	EVBC-10-25
11	2	GAUGE PORT CAP	EVGC-11
12	1	BONNET CAP COVER	EVTC-12-∅-25
13	2	UNION SEAL O-RING*	EVO-13-25-Σ
14	2	UNION NUT*	EVUN-14-∞-25
15	2	UNION INSERT*	EVUI-15-∞-Δ-Φ

UNDERLINED ITEMS REQUIRE CODES FROM ABOVE CHART
 *OPTIONAL FEATURE (AVAILABLE IN PLASTIC ONLY)

DO NOT COPY WITHOUT PRIOR WRITTEN APPROVAL FROM PRIMARY FLUID SYSTEMS INC.

PRIMARY FLUID SYSTEMS INC.

1050 Cooke Blvd, Burlington, Ontario L7T 4A8

**ECO BACK PRESSURE OR PRESSURE RELIEF VALVE
 EXPLODED PARTS VIEW**

DATE ISSUED: 18-OCT-11 SCALE: NTS (SHEET: 1 OF 1)

PROJECT: ECO VALVE A-SERIES DRAWN BY: VICTOR W.

APPROVED BY: DWG NO: EV-APA-253850STD-XPL REV.# 4

Exploded View – Back Pressure / Pressure Relief Valve

1/2" High Flow (ECO-55), 3/4" (ECO-75), 1" (ECO-100) ECO Valves

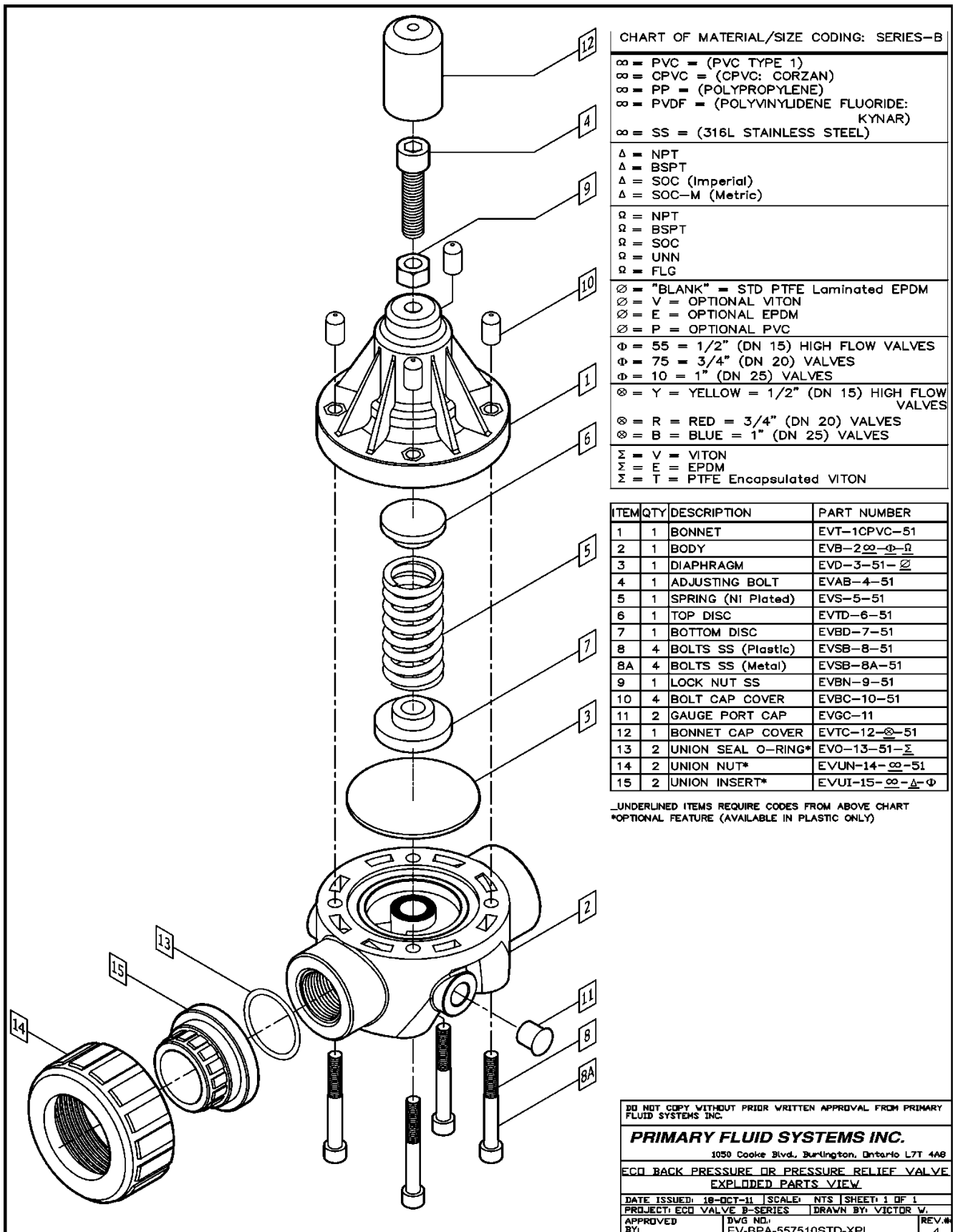


CHART OF MATERIAL/SIZE CODING: SERIES-B

∞ = PVC = (PVC TYPE 1)
∞ = CPVC = (CPVC: CORZAN)
∞ = PP = (POLYPROPYLENE)
∞ = PVDF = (POLYVINYLIDENE FLUORIDE: KYNAR)
∞ = SS = (316L STAINLESS STEEL)
Δ = NPT
Δ = BSPT
Δ = SOC (Imperial)
Δ = SOC-M (Metric)
Ω = NPT
Ω = BSPT
Ω = SOC
Ω = UNN
Ω = FLG
∅ = "BLANK" = STD PTFE Laminated EPDM
∅ = V = OPTIONAL VITON
∅ = E = OPTIONAL EPDM
∅ = P = OPTIONAL PVC
Φ = 55 = 1/2" (DN 15) HIGH FLOW VALVES
Φ = 75 = 3/4" (DN 20) VALVES
Φ = 10 = 1" (DN 25) VALVES
⊗ = Y = YELLOW = 1/2" (DN 15) HIGH FLOW VALVES
⊗ = R = RED = 3/4" (DN 20) VALVES
⊗ = B = BLUE = 1" (DN 25) VALVES
Σ = V = VITON
Σ = E = EPDM
Σ = T = PTFE Encapsulated VITON

ITEM	QTY	DESCRIPTION	PART NUMBER
1	1	BONNET	EVT-1CPVC-51
2	1	BODY	EVB-2∞-Φ-Ω
3	1	DIAPHRAGM	EVD-3-51-∅
4	1	ADJUSTING BOLT	EVAB-4-51
5	1	SPRING (NI Plated)	EVS-5-51
6	1	TOP DISC	EVTD-6-51
7	1	BOTTOM DISC	EVBD-7-51
8	4	BOLTS SS (Plastic)	EVSB-8-51
8A	4	BOLTS SS (Metal)	EVSB-8A-51
9	1	LOCK NUT SS	EVBN-9-51
10	4	BOLT CAP COVER	EVBC-10-51
11	2	GAUGE PORT CAP	EVGC-11
12	1	BONNET CAP COVER	EVTc-12-∅-51
13	2	UNION SEAL O-RING*	EVO-13-51-Σ
14	2	UNION NUT*	EVUN-14-∞-51
15	2	UNION INSERT*	EVUI-15-∞-Δ-Φ

UNDERLINED ITEMS REQUIRE CODES FROM ABOVE CHART
 *OPTIONAL FEATURE (AVAILABLE IN PLASTIC ONLY)

DO NOT COPY WITHOUT PRIOR WRITTEN APPROVAL FROM PRIMARY FLUID SYSTEMS INC.

PRIMARY FLUID SYSTEMS INC.
 1050 Cooke Blvd., Burlington, Ontario L7T 4A8

ECO BACK PRESSURE OR PRESSURE RELIEF VALVE
 EXPLODED PARTS VIEW

DATE ISSUED: 16-OCT-11 | SCALE: NTS | SHEET: 1 OF 1
 PROJECT: ECO VALVE B-SERIES | DRAWN BY: VICTOR W.
 APPROVED BY: [Signature] | DWG NO.: EV-BPA-557510STD-XPL | REV.#: 4

Exploded View – Back Pressure / Pressure Relief Valve

ECO-110 (High Flow), ECO-125, ECO-150, ECO-200

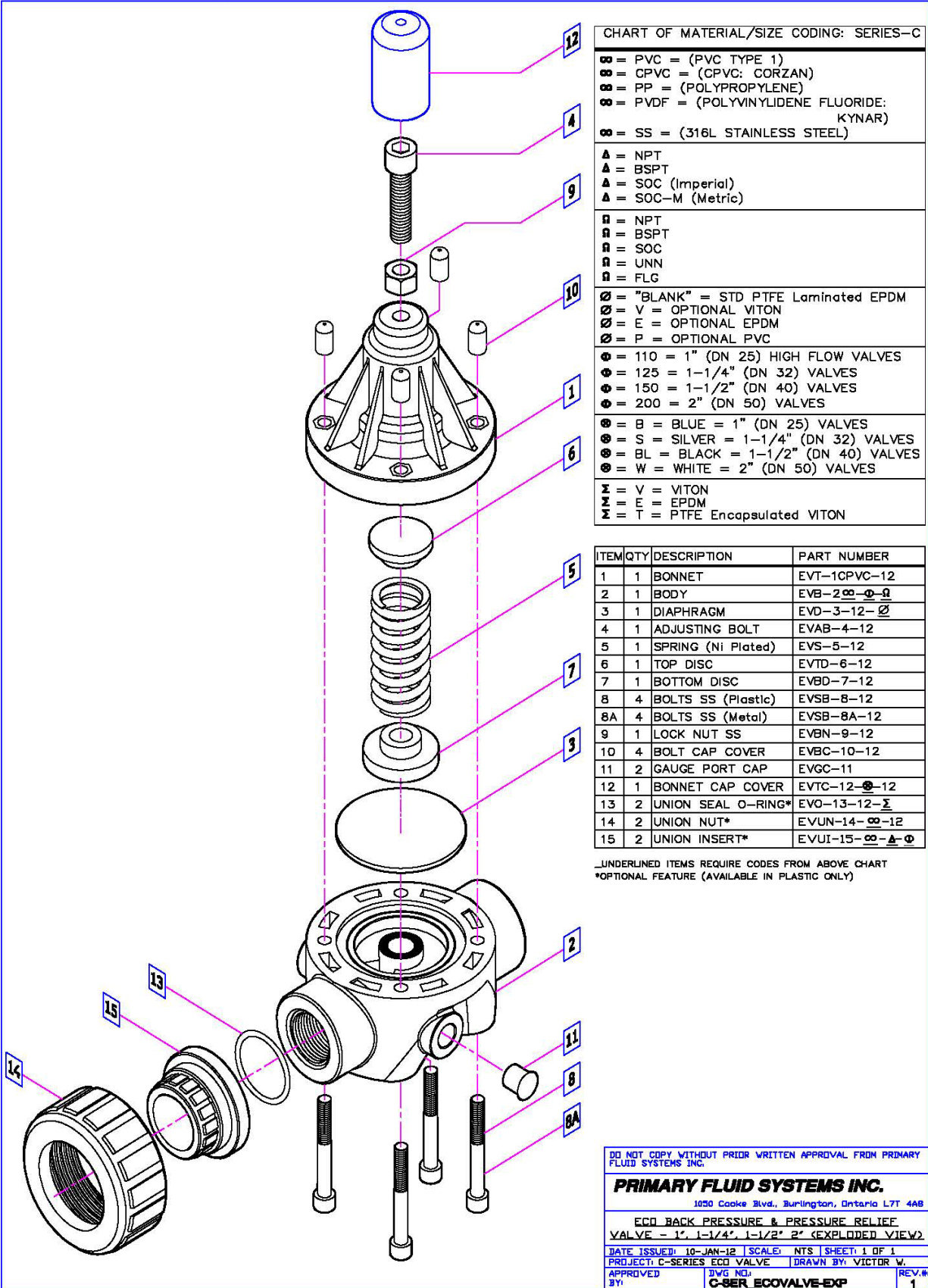


CHART OF MATERIAL/SIZE CODING: SERIES-C

- ∞ = PVC = (PVC TYPE 1)
- ∞ = CPVC = (CPVC: CORZAN)
- ∞ = PP = (POLYPROPYLENE)
- ∞ = PVDF = (POLYVINYLIDENE FLUORIDE: KYNAR)
- ∞ = SS = (316L STAINLESS STEEL)
- Δ = NPT
- Δ = BSPT
- Δ = SOC (Imperial)
- Δ = SOC-M (Metric)
- = NPT
- = BSPT
- = SOC
- = UNN
- = FLG
- ∅ = "BLANK" = STD PTFE Laminated EPDM
- ∅ = V = OPTIONAL VITON
- ∅ = E = OPTIONAL EPDM
- ∅ = P = OPTIONAL PVC
- Φ = 110 = 1" (DN 25) HIGH FLOW VALVES
- Φ = 125 = 1-1/4" (DN 32) VALVES
- Φ = 150 = 1-1/2" (DN 40) VALVES
- Φ = 200 = 2" (DN 50) VALVES
- ⊗ = B = BLUE = 1" (DN 25) VALVES
- ⊗ = S = SILVER = 1-1/4" (DN 32) VALVES
- ⊗ = BL = BLACK = 1-1/2" (DN 40) VALVES
- ⊗ = W = WHITE = 2" (DN 50) VALVES
- Σ = V = VITON
- Σ = E = EPDM
- Σ = T = PTFE Encapsulated VITON

ITEM	QTY	DESCRIPTION	PART NUMBER
1	1	BONNET	EVT-10PVC-12
2	1	BODY	EVB-2∞-Φ-∞
3	1	DIAPHRAGM	EVD-3-12-∅
4	1	ADJUSTING BOLT	EVAB-4-12
5	1	SPRING (Ni Plated)	EVS-5-12
6	1	TOP DISC	EVTD-6-12
7	1	BOTTOM DISC	EVBD-7-12
8	4	BOLTS SS (Plastic)	EVSB-8-12
8A	4	BOLTS SS (Metal)	EVSB-8A-12
9	1	LOCK NUT SS	EVBN-9-12
10	4	BOLT CAP COVER	EVBC-10-12
11	2	GAUGE PORT CAP	EVGC-11
12	1	BONNET CAP COVER	EVTC-12-∅-12
13	2	UNION SEAL O-RING*	EVO-13-12-Σ
14	2	UNION NUT*	EVUN-14-∞-12
15	2	UNION INSERT*	EVUI-15-∞-Δ-Φ

UNDERLINED ITEMS REQUIRE CODES FROM ABOVE CHART
 *OPTIONAL FEATURE (AVAILABLE IN PLASTIC ONLY)

DO NOT COPY WITHOUT PRIOR WRITTEN APPROVAL FROM PRIMARY FLUID SYSTEMS INC.

PRIMARY FLUID SYSTEMS INC.
 1050 Cooke Blvd., Burlington, Ontario L7T 4A8

ECO BACK PRESSURE & PRESSURE RELIEF VALVE - 1", 1-1/4", 1-1/2", 2" (EXPLODED VIEW)

DATE ISSUED: 10-JAN-12	SCALE: NTS	SHEET: 1 OF 1
PROJECT: C-SERIES ECO VALVE	DRAWN BY: VICTOR W.	
APPROVED BY:	DWG NO: C-SER ECOVALVE-EXP	REV.#: 1

ECO VALVE PARTS SUGGESTED PRICE LIST

ECO-25, ECO-38, ECO-50, ECO-55, ECO-75, ECO 100

CODE E

Key	PRODUCT	PART #		PRICE	
		25, 38, 50	55, 75, 100		
1	Bonnet	EVT-1CPVC-25	79.00	EVT-1CPVC-51	103.00
	Bonnet	EVT-1SS-25	179.00	EVT-1SS-51	204.00
	Bonnet	EVT-1AL-25	72.00	EVT-1AL-51	99.00
2	Body	EVB-2CPVC-50-BSPT	206.00	EVB-2CPVC-10-BSP	420.00
	Body	EVB-2CPVC-50-NPT	206.00	EVB-2CPVC-10-NPT	420.00
	Body	EVB-2CPVC-50-FLG	316.00	EVB-2CPVC-10-FLG	525.00
	Body	EVB-2CPVC-50-SOC	206.00	EVB-2CPVC-10-SOC	420.00
	Body	EVB-2CPVC-50-SOC-M	206.00	EVB-2CPVC-10-SOC-M	420.00
	Body	EVB-2CPVC-50-UNN	277.00	EVB-2CPVC-10-UNN	435.00
	Body	EVB-2CPVC-38-BSPT	172.00	EVB-2CPVC-75-BSP	282.00
	Body	EVB-2CPVC-38-NPT	172.00	EVB-2CPVC-75-NPT	282.00
	Body	EVB-2CPVC-38-SOC	172.00	EVB-2CPVC-75-FLG	367.00
	Body	EVB-2CPVC-38-SOC-M	172.00	EVB-2CPVC-75-SOC	282.00
	Body	EVB-2CPVC-38-UNN	187.00	EVB-2CPVC-75-SOC-M	282.00
	Body	EVB-2CPVC-25-BSPT	162.00	EVB-2CPVC-75-UNN	313.00
	Body	EVB-2CPVC-25-NPT	162.00	EVB-2CPVC-55-BSP	267.00
	Body	EVB-2CPVC-25-SOC	162.00	EVB-2CPVC-55-NPT	267.00
	Body	EVB-2CPVC-25-SOC-M	162.00	EVB-2CPVC-55-FLG	347.00
	Body	EVB-2CPVC-25-UNN	178.00	EVB-2CPVC-55-SOC	267.00
	Body	EVB-2PP-50-BSPT	182.00	EVB-2CPVC-55-SOC-M	267.00
	Body	EVB-2PP-50-NPT	182.00	EVB-2CPVC-55-UNN	277.00
	Body	EVB-2PP-50-FLG	300.00	EVB-2PP-10-BSP	307.00
	Body	EVB-2PP-50-SOC	182.00	EVB-2PP-10-NPT	307.00
	Body	EVB-2PP-50-SOC-M	182.00	EVB-2PP-10-FLG	568.00
	Body	EVB-2PP-50-UNN	205.00	EVB-2PP-10-SOC	307.00
	Body	EVB-2PP-38-BSPT	148.00	EVB-2PP-10-SOC-M	307.00
	Body	EVB-2PP-38-NPT	148.00	EVB-2PP-10-UNN	288.00
	Body	EVB-2PP-38-SOC	148.00	EVB-2PP-75-BSP	238.00
	Body	EVB-2PP-38-SOC-M	148.00	EVB-2PP-75-NPT	238.00
	Body	EVB-2PP-38-UNN	157.00	EVB-2PP-75-FLG	495.00
	Body	EVB-2PP-25-BSPT	133.00	EVB-2PP-75-SOC	238.00
	Body	EVB-2PP-25-NPT	133.00	EVB-2PP-75-SOC-M	238.00
	Body	EVB-2PP-25-SOC	133.00	EVB-2PP-75-UNN	261.00
	Body	EVB-2PP-25-SOC-M	133.00	EVB-2PP-55-BSP	221.00
	Body	EVB-2PP-25-UNN	142.00	EVB-2PP-55-NPT	221.00
	Body	EVB-2PVC-50-BSPT	159.00	EVB-2PP-55-FLG	423.00
	Body	EVB-2PVC-50-NPT	159.00	EVB-2PP-55-SOC	221.00
	Body	EVB-2PVC-50-FLG	237.00	EVB-2PP-55-SOC-M	221.00
	Body	EVB-2PVC-50-SOC	159.00	EVB-2PP-55-UNN	227.00
	Body	EVB-2PVC-50-SOC-M	159.00	EVB-2PVC-10-BSP	303.00
	Body	EVB-2PVC-50-UNN	189.00	EVB-2PVC-10-NPT	303.00
	Body	EVB-2PVC-38-BSPT	143.00	EVB-2PVC-10-FLG	393.00
	Body	EVB-2PVC-38-NPT	143.00	EVB-2PVC-10-SOC	303.00
	Body	EVB-2PVC-38-SOC	143.00	EVB-2PVC-10-SOC-M	303.00
	Body	EVB-2PVC-38-SOC-M	143.00	EVB-2PVC-10-UNN	316.00
Body	EVB-2PVC-38-UNN	152.00	EVB-2PVC-75-BSP	233.00	
Body	EVB-2PVC-25-BSPT	129.00	EVB-2PVC-75-NPT	233.00	
Body	EVB-2PVC-25-NPT	129.00	EVB-2PVC-75-FLG	304.00	
Body	EVB-2PVC-25-SOC	129.00	EVB-2PVC-75-SOC	233.00	
Body	EVB-2PVC-25-SOC-M	129.00	EVB-2PVC-75-SOC-M	233.00	
Body	EVB-2PVC-25-UNN	140.00	EVB-2PVC-75-UNN	253.00	
Body	EVB-2PVDF-50-BPST	332.00	EVB-2PVC-55-BSP	212.00	
Body	EVB-2PVDF-50-NPT	332.00	EVB-2PVC-55-NPT	212.00	
Body	EVB-2PVDF-50-FLG	553.00	EVB-2PVC-55-FLG	277.00	
Body	EVB-2PVDF-50-SOC	332.00	EVB-2PVC-55-SOC	212.00	
Body	EVB-2PVDF-50-SOC-M	332.00	EVB-2PVC-55-SOC-M	212.00	

Key	PRODUCT	PART #	PRICE	PART #	PRICE
		25, 38, 50		55, 75, 100	
	Body	EVB-2PVDF-50-UNN	372.00	EVB-2PVC-55-UNN	234.00
	Body	EVB-2PVDF-38-BSPT	301.00	EVB-2PVDF-10-BSP	553.00
	Body	EVB-2PVDF-38-NPT	301.00	EVB-2PVDF-10-NPT	553.00
	Body	EVB-2PVDF-38-SOC	301.00	EVB-2PVDF-10-FLG	960.00
	Body	EVB-2PVDF-38-SOC-M	304.00	EVB-2PVDF-10-SOC	553.00
	Body	EVB-2PVDF-38-UNN	331.00	EVB-2PVDF-10-SOC-M	553.00
	Body	EVB-2PVDF-25-BSPT	237.00	EVB-2PVDF-10-UNN	593.00
	Body	EVB-2PVDF-25-NPT	237.00	EVB-2PVDF-75-BSP	502.00
	Body	EVB-2PVDF-25-SOC	237.00	EVB-2PVDF-75-NPT	502.00
	Body	EVB-2PVDF-25-SOC-M	237.00	EVB-2PVDF-75-FLG	707.00
	Body	EVB-2PVDF-25-UNN	263.00	EVB-2PVDF-75-SOC	502.00
	Body	EVB-2SS-50-BSP	369.00	EVB-2PVDF-75-SOC-M	502.00
	Body	EVB-2SS-50-NPT	369.00	EVB-2PVDF-75-UNN	549.00
	Body	EVB-2SS-50-FLG	660.00	EVB-2PVDF-55-BSP	403.00
	Body	EVB-2SS-50-SOC	369.00	EVB-2PVDF-55-NPT	403.00
	Body	EVB-2SS-50-SOC-M	369.00	EVB-2PVDF-55-FLG	647.00
	Body	EVB-2SS-38-BSP	281.00	EVB-2PVDF-55-SOC	403.00
	Body	EVB-2SS-38-NPT	281.00	EVB-2PVDF-55-SOC-M	403.00
	Body	EVB-2SS-38-SOC	281.00	EVB-2PVDF-55-UNN	439.00
	Body	EVB-2SS-38-SOC-M	281.00	EVB-2SS-10-BSP	616.00
	Body	EVB-2SS-25-BSP	268.00	EVB-2SS-10-NPT	616.00
	Body	EVB-2SS-25-NPT	268.00	EVB-2SS-10-FLG	1,095.00
	Body	EVB-2SS-25-SOC	268.00	EVB-2SS-10-SOC	616.00
	Body	EVB-2SS-25-SOC-M	268.00	EVB-2SS-10-SOC-M	616.00
	Body			EVB-2SS-75-BSP	469.00
	Body			EVB-2SS-75-NPT	469.00
	Body			EVB-2SS-75-FLG	820.00
	Body			EVB-2SS-75-SOC	469.00
	Body			EVB-2SS-75-SOC-M	469.00
	Body			EVB-2SS-55-BSP	447.00
	Body			EVB-2SS-55-NPT	447.00
	Body			EVB-2SS-55-FLG	780.00
	Body			EVB-2SS-55-SOC	447.00
	Body			EVB-2SS-55-SOC-M	447.00
3	Diaphragm	EVD-3-25-E	26.00	EVD-3-51-E	57.00
	Diaphragm	EVD-3-25-P	26.00	EVD-3-51-P	57.00
	Diaphragm	EVD-3-25-V	26.00	EVD-3-51-V	57.00
	Diaphragm	EVD-3-25	26.00	EVD-3-51	57.00
4	Adjusting Bolt	EVAB-4-25	1.60	EVAB-4-51	1.60
5	SPRING	EVS-5-25	17.00	EVS-5-51	31.00
6	TOP DISC	EVD-6-25	4.80	EVD-6-51	4.80
7	BOTTOM DISC	EVBD-7-25	6.35	EVBD-7-51	6.35
8	BOLTS (plastic)	EVSB-8-25	0.60	EVSB-8-51	1.85
8A	Bolts (Metal)	EVSB-8A-25	0.60	EVSB-8A-51	1.85
9	NUTS	EVBN-9-25	0.55	EVBN-9-51	0.55
10	Bolt Cap	EVBC-10-25	0.20	EVBC-10-51	0.20
11	Gauge Port Cap	EVGC-11	0.25	EVGC-11	0.25
12	Bonnet Cover Cap	EVTC-12BK-25	0.65	EVTC-12B-51	0.65
	Bonnet Cover Cap	EVTC-12BR-25	0.65	EVTC-12R-51	0.65
	Bonnet Cover Cap	EVTC-12G-25	0.65	EVTC-12Y-51	0.65
	Bonnet Cover Cap	EVTC-12Y-25	0.65		
13	Union Seal O-Ring	EVO-13-25-E	0.95	EVO-13-51-E	1.05
	Union Seal O-Ring	EVO-13-25-T	5.30	EVO-13-51-T	6.35
	Union Seal O-Ring	EVO-13-25-V	1.85	EVO-13-51-V	2.15
14	Union Nut	EVUN-14-CPVC-25	7.15	EVUN-14-CPVC-51	7.90
	Union Nut	EVUN-14-PP-25	7.20	EVUN-14-PP-51	10.00
	Union Nut	EVUN-14-PVC-25	4.15	EVUN-14-PVC-51	5.20

Key	PRODUCT	PART #	PRICE	PART #	PRICE
		25, 38, 50		55, 75, 100	
	Union Nut	EVUN-14-PVDF-25	13.95	EVUN-14-PVDF-51	16.00
15	Union Insert	EVUI-15-CPVC-BSP-50	6.70	EVUI-15-CPVC-BSPT-10	7.90
	Union Insert	EVUI-15-CPVC-NPT-50	6.70	EVUI-15-CPVC-NPT-10	7.90
	Union Insert	EVUI-15-CPVC-SOC-50	3.40	EVUI-15-CPVC-SOC-10	3.80
	Union Insert	EVUI-15-CPVC-SOC-M-50	3.40	EVUI-15-CPVC-SOC-M-10	4.00
	Union Insert	EVUI-15-CPVC-BSPT-38	6.70	EVUI-15-CPVC-BSPT-75	7.20
	Union Insert	EVUI-15-CPVC-NPT-38	6.70	EVUI-15-CPVC-NPT-75	7.20
	Union Insert	EVUI-15-CPVC-SOC-38	3.40	EVUI-15-CPVC-SOC-75	3.60
	Union Insert	EVUI-15-CPVC-SOC-M-38	3.40	EVUI-15-CPVC-SOC-M-75	3.60
	Union Insert	EVUI-15-CPVC-BSPT-25	6.20	EVUI-15-CPVC-BSPT-55	6.00
	Union Insert	EVUI-15-CPVC-NPT-25	6.20	EVUI-15-CPVC-NPT-55	6.00
	Union Insert	EVUI-15-CPVC-SOC-25	3.35	EVUI-15-CPVC-SOC-55	3.00
	Union Insert	EVUI-15-CPVC-SOC-M-25	3.35	EVUI-15-CPVC-SOC-M-55	3.00
	Union Insert	EVUI-15-PP-BSP-50	7.20	EVUI-15-PP-BSPT-10	6.20
	Union Insert	EVUI-15-PP-NPT-50	7.20	EVUI-15-PP-NPT-10	6.20
	Union Insert	EVUI-15-PP-SOC-50	3.20	EVUI-15-PP-SOC-10	6.00
	Union Insert	EVUI-15-PP-SOC-M-50	3.20	EVUI-15-PP-SOC-M-10	6.00
	Union Insert	EVUI-15-PP-BSPT-38	7.90	EVUI-15-PP-BSP-75	5.00
	Union Insert	EVUI-15-PP-NPT-38	7.90	EVUI-15-PP-NPT-75	5.00
	Union Insert	EVUI-15-PP-SOC-38	3.20	EVUI-15-PP-SOC-75	5.00
	Union Insert	EVUI-15-PP-SOC-M-38	3.20	EVUI-15-PP-SOC-M-75	5.00
	Union Insert	EVUI-15-PP-BSPT-25	7.70	EVUI-15-PP-BSP-55	4.00
	Union Insert	EVUI-15-PP-NPT-25	7.70	EVUI-15-PP-NPT-55	4.00
	Union Insert	EVUI-15-PP-SOC-25	3.15	EVUI-15-PP-SOC-55	4.00
	Union Insert	EVUI-15-PP-SOC-M-25	3.15	EVUI-15-PP-SOC-M-55	4.00
	Union Insert	EVUI-15-PVC-BSP-50	3.80	EVUI-15-PVC-BSPT-10	5.40
	Union Insert	EVUI-15-PVC-NPT-50	3.80	EVUI-15-PVC-NPT-10	5.40
	Union Insert	EVUI-15-PVC-SOC-50	2.00	EVUI-15-PVC-SOC-10	3.60
	Union Insert	EVUI-15-PVC-SOC-M-50	2.00	EVUI-15-PVC-SOC-M-10	3.60
	Union Insert	EVUI-15-PVC-BSPT-38	4.90	EVUI-15-PVC-BSP-75	4.20
	Union Insert	EVUI-15-PVC-NPT-38	4.90	EVUI-15-PVC-NPT-75	4.20
	Union Insert	EVUI-15-PVC-SOC-38	2.00	EVUI-15-PVC-SOC-75	3.00
	Union Insert	EVUI-15-PVC-SOC-M-38	2.00	EVUI-15-PVC-SOC-M-75	3.00
	Union Insert	EVUI-15-PVC-BSPT-25	4.70	EVUI-15-PVC-BSP-55	4.00
	Union Insert	EVUI-15-PVC-NPT-25	4.70	EVUI-15-PVC-NPT-55	4.00
	Union Insert	EVUI-15-PVC-SOC-25	1.95	EVUI-15-PVC-SOC-55	2.60
	Union Insert	EVUI-15-PVC-SOC-M-25	1.95	EVUI-15-PVC-SOC-M-55	2.60
	Union Insert	EVUI-15-PVDF-BSP-50	13.80	EVUI-15-PVDF-BSPT-10	20.40
	Union Insert	EVUI-15-PVDF-NPT-50	13.80	EVUI-15-PVDF-NPT-10	20.40
	Union Insert	EVUI-15-PVDF-SOC-50	11.80	EVUI-15-PVDF-SOC-10	16.20
	Union Insert	EVUI-15-PVDF-SOC-M-50	11.80	EVUI-15-PVDF-SOC-M-10	16.20
	Union Insert	EVUI-15-PVDF-BSPT-38	13.80	EVUI-15-PVDF-BSP-75	20.00
	Union Insert	EVUI-15-PVDF-NPT-38	13.80	EVUI-15-PVDF-NPT-75	20.00
	Union Insert	EVUI-15-PVDF-SOC-38	11.60	EVUI-15-PVDF-SOC-75	16.00
	Union Insert	EVUI-15-PVDF-SOC-M-38	11.60	EVUI-15-PVDF-SOC-M-75	16.00
	Union Insert	EVUI-15-PVDF-BSPT-25	13.60	EVUI-15-PVDF-BSP-55	16.00
	Union Insert	EVUI-15-PVDF-NPT-25	13.60	EVUI-15-PVDF-NPT-55	16.00
	Union Insert	EVUI-15-PVDF-SOC-25	11.40	EVUI-15-PVDF-SOC-55	12.00
	Union Insert	EVUI-15-PVDF-SOC-M-25	11.40	EVUI-15-PVDF-SOC-M-55	12.00

ECO VALVE PARTS SUGGESTED PRICE LIST

ECO-110, ECO-125, ECO-150, ECO-200

CODE E

Key	PRODUCT	PART #	PRICE	PART #	PRICE
		110, 125, 150, 200		110, 125, 150, 200	
1	Bonnet	EVT-1CPVC-12	135.00	EVT-1SS-12	299.00
	Bonnet	EVT-1AL-12	146.00		
2	Body	EVB-2CPVC-200-BSP	844.00	EVB-2PP-200-BSP	613.00
	Body	EVB-2CPVC-200-NPT	844.00	EVB-2PP-200-NPT	613.00
	Body	EVB-2CPVC-200-FLG	1,138.00	EVB-2PP-200-FLG	826.00
	Body	EVB-2CPVC-200-SOC	844.00	EVB-2PP-200-SOC	613.00
	Body	EVB-2CPVC-200-SOC-M	844.00	EVB-2PP-200-SOC-M	613.00
	Body	EVB-2CPVC-200-UNN	920.00	EVB-2PP-200-UNN	668.00
	Body	EVB-2CPVC-150-BSP	500.00	EVB-2PP-150-BSP	476.00
	Body	EVB-2CPVC-150-NPT	500.00	EVB-2PP-150-NPT	476.00
	Body	EVB-2CPVC-150-FLG	675.00	EVB-2PP-150-FLG	639.00
	Body	EVB-2CPVC-150-SOC	500.00	EVB-2PP-150-SOC	476.00
	Body	EVB-2CPVC-150-SOC-M	500.00	EVB-2PP-150-SOC-M	476.00
	Body	EVB-2CPVC-150-UNN	545.00	EVB-2PP-150-UNN	516.00
	Body	EVB-2CPVC-125-BSP	465.00	EVB-2PP-125-BSP	423.00
	Body	EVB-2CPVC-125-NPT	465.00	EVB-2PP-125-NPT	423.00
	Body	EVB-2CPVC-125-FLG	626.00	EVB-2PP-125-FLG	570.00
	Body	EVB-2CPVC-125-SOC	465.00	EVB-2PP-125-SOC	423.00
	Body	EVB-2CPVC-125-SOC-M	465.00	EVB-2PP-125-SOC-M	423.00
	Body	EVB-2CPVC-125-UNN	506.00	EVB-2PP-125-UNN	462.00
	Body	EVB-2CPVC-110-BSP	349.00	EVB-2PP-110-BSP	405.00
	Body	EVB-2CPVC-110-NPT	349.00	EVB-2PP-110-NPT	405.00
	Body	EVB-2CPVC-110-FLG	468.00	EVB-2PP-110-FLG	545.00
	Body	EVB-2CPVC-110-SOC	349.00	EVB-2PP-110-SOC	405.00
	Body	EVB-2CPVC-110-SOC-M	349.00	EVB-2PP-110-SOC-M	405.00
	Body	EVB-2CPVC-110-UNN	380.00	EVB-2PP-110-UNN	442.00
	Body	EVB-2PVC-200-BSP	582.00	EVB-2PVDF-200-BSP	1,796.00
	Body	EVB-2PVC-200-NPT	582.00	EVB-2PVDF-200-NPT	1,796.00
	Body	EVB-2PVC-200-FLG	785.00	EVB-2PVDF-200-FLG	2,425.00
	Body	EVB-2PVC-200-SOC	582.00	EVB-2PVDF-200-SOC	1,796.00
	Body	EVB-2PVC-200-SOC-M	582.00	EVB-2PVDF-200-SOC-M	1,796.00
	Body	EVB-2PVC-200-UNN	635.00	EVB-2PVDF-200-UNN	1,958.00
	Body	EVB-2PVC-150-BSP	448.00	EVB-2PVDF-150-BSP	1,029.00
	Body	EVB-2PVC-150-NPT	448.00	EVB-2PVDF-150-NPT	1,029.00
	Body	EVB-2PVC-150-FLG	605.00	EVB-2PVDF-150-FLG	1,388.00
	Body	EVB-2PVC-150-SOC	448.00	EVB-2PVDF-150-SOC	1,029.00
	Body	EVB-2PVC-150-SOC-M	448.00	EVB-2PVDF-150-SOC-M	1,029.00
	Body	EVB-2PVC-150-UNN	489.00	EVB-2PVDF-150-UNN	1,122.00
	Body	EVB-2PVC-125-BSP	407.00	EVB-2PVDF-125-BSP	938.00
	Body	EVB-2PVC-125-NPT	407.00	EVB-2PVDF-125-NPT	938.00
	Body	EVB-2PVC-125-FLG	550.00	EVB-2PVDF-125-FLG	1,264.00
	Body	EVB-2PVC-125-SOC	407.00	EVB-2PVDF-125-SOC	938.00
	Body	EVB-2PVC-125-SOC-M	407.00	EVB-2PVDF-125-SOC-M	938.00
	Body	EVB-2PVC-125-UNN	445.00	EVB-2PVDF-125-UNN	1,023.00
	Body	EVB-2PVC-110-BSP	378.00	EVB-2PVDF-110-BSP	888.00
	Body	EVB-2PVC-110-NPT	378.00	EVB-2PVDF-110-NPT	888.00
	Body	EVB-2PVC-110-FLG	510.00	EVB-2PVDF-110-FLG	1,198.00
	Body	EVB-2PVC-110-SOC	378.00	EVB-2PVDF-110-SOC	888.00
	Body	EVB-2PVC-110-SOC-M	378.00	EVB-2PVDF-110-SOC-M	888.00
	Body	EVB-2PVC-110-UNN	413.00	EVB-2PVDF-110-UNN	969.00
	Body	EVB-2SS-200-BSP	1,876.00		
	Body	EVB-2SS-200-NPT	1,876.00		
	Body	EVB-2SS-200-FLG	2,630.00		
	Body	EVB-2SS-200-SOC	1,876.00		
	Body	EVB-2SS-200-SOC-M	1,876.00		

Key	PRODUCT	PART #	PRICE	PART #	PRICE
		<i>110, 125, 150, 200</i>		<i>110, 125, 150, 200</i>	
	Body	EVB-2SS-150-BSP	1,225.00		
	Body	EVB-2SS-150-NPT	1,225.00		
	Body	EVB-2SS-150-FLG	1,900.00		
	Body	EVB-2SS-150-SOC	1,225.00		
	Body	EVB-2SS-150-SOC-M	1,225.00		
	Body	EVB-2SS-125-BSP	1,111.00		
	Body	EVB-2SS-125-NPT	1,111.00		
	Body	EVB-2SS-125-FLG	1,599.00		
	Body	EVB-2SS-125-SOC	1,111.00		
	Body	EVB-2SS-125-SOC-M	1,111.00		
	Body	EVB-2SS-110-BSP	1,055.00		
	Body	EVB-2SS-110-NPT	1,055.00		
	Body	EVB-2SS-110-FLG	1,525.00		
	Body	EVB-2SS-110-SOC	1,055.00		
	Body	EVB-2SS-110-SOC-M	1,055.00		
3	Diaphragm	EVD-3-12-E	72.00	EVD-3-12-V	72.00
	Diaphragm	EVD-3-12-P	72.00	EVD-3-12	72.00
4	Adjusting Bolt	EVAB-4-12	2.00		
5	SPRING	EVS-5-12	38.00		
6	TOP DISC	EVTD-6-12	5.00		
7	BOTTOM DISC	EVBD-7-12	6.50		
8	BOLTS (plastic)	EVSB-8-12	4.00		
8A	Bolts (Metal)	EVSB-8A-12	4.00		
9	NUTS	EVBN-9-12	0.75		
10	Bolt Cap	EVBC-10-12	0.20		
11	Gauge Port Cap	EVGC-11	0.20		
12	Bonnet Cover Cap	EVTC-12B-12	0.70	EVTC-12Y-12	0.70
	Bonnet Cover Cap	EVTC-12R-12	0.70		
13	Union Seal O-Ring	EVO-13-12-E	2.00	EVO-13-12-V	8.00
	Union Seal O-Ring	EVO-13-12-T	16.00		
14	Union Nut	EVUN-14-CPVC-12	17.00	EVUN-14-PVC-12	13.00
	Union Nut	EVUN-14-PP-12	20.00	EVUN-14-PVDF-12	45.00
15	Union Insert	EVUI-15-CPVC-BSPT-200	52.00	EVUI-15-PP-BSPT-200	50.00
	Union Insert	EVUI-15-CPVC-NPT-200	52.00	EVUI-15-PP-NPT-200	50.00
	Union Insert	EVUI-15-CPVC-SOC-200	52.00	EVUI-15-PP-SOC-200	50.00
	Union Insert	EVUI-15-CPVC-SOC-M-200	52.00	EVUI-15-PP-SOC-M-200	50.00
	Union Insert	EVUI-15-CPVC-BSPT-150	48.00	EVUI-15-PP-BSP-150	48.00
	Union Insert	EVUI-15-CPVC-NPT-150	48.00	EVUI-15-PP-NPT-150	48.00
	Union Insert	EVUI-15-CPVC-SOC-150	48.00	EVUI-15-PP-SOC-150	48.00
	Union Insert	EVUI-15-CPVC-SOC-M-150	48.00	EVUI-15-PP-SOC-M-150	48.00
	Union Insert	EVUI-15-CPVC-BSPT-125	44.00	EVUI-15-PP-BSP-125	45.00
	Union Insert	EVUI-15-CPVC-NPT-125	44.00	EVUI-15-PP-NPT-125	45.00
	Union Insert	EVUI-15-CPVC-SOC-125	44.00	EVUI-15-PP-SOC-125	45.00
	Union Insert	EVUI-15-CPVC-SOC-M-125	44.00	EVUI-15-PP-SOC-M-125	45.00
	Union Insert	EVUI-15-CPVC-BSPT-110	42.00	EVUI-15-PP-BSP-110	43.00
	Union Insert	EVUI-15-CPVC-NPT-110	42.00	EVUI-15-PP-NPT-110	43.00
	Union Insert	EVUI-15-CPVC-SOC-110	42.00	EVUI-15-PP-SOC-110	43.00
	Union Insert	EVUI-15-CPVC-SOC-M-110	42.00	EVUI-15-PP-SOC-M-110	43.00
	Union Insert	EVUI-15-PVC-BSPT-200	40.00	EVUI-15-PVDF-BSPT-200	68.00
	Union Insert	EVUI-15-PVC-NPT-200	40.00	EVUI-15-PVDF-NPT-200	68.00
	Union Insert	EVUI-15-PVC-SOC-200	40.00	EVUI-15-PVDF-SOC-200	68.00
	Union Insert	EVUI-15-PVC-SOC-M-200	40.00	EVUI-15-PVDF-SOC-M-200	68.00
	Union Insert	EVUI-15-PVC-BSP-150	33.00	EVUI-15-PVDF-BSP-150	62.00
	Union Insert	EVUI-15-PVC-NPT-150	33.00	EVUI-15-PVDF-NPT-150	62.00
	Union Insert	EVUI-15-PVC-SOC-150	33.00	EVUI-15-PVDF-SOC-150	62.00
	Union Insert	EVUI-15-PVC-SOC-M-150	33.00	EVUI-15-PVDF-SOC-M-150	62.00
	Union Insert	EVUI-15-PVC-BSP-125	30.00	EVUI-15-PVDF-BSP-125	60.00

Key	PRODUCT	PART #	PRICE	PART #	PRICE
		110, 125, 150, 200		110, 125, 150, 200	
	Union Insert	EVUI-15-PVC-NPT-125	30.00	EVUI-15-PVDF-NPT-125	60.00
	Union Insert	EVUI-15-PVC-SOC-125	30.00	EVUI-15-PVDF-SOC-125	60.00
	Union Insert	EVUI-15-PVC-SOC-M-125	30.00	EVUI-15-PVDF-SOC-M-125	60.00
	Union Insert	EVUI-15-PVC-BSP-110	28.00	EVUI-15-PVDF-BSP-110	58.00
	Union Insert	EVUI-15-PVC-NPT-110	28.00	EVUI-15-PVDF-NPT-110	58.00
	Union Insert	EVUI-15-PVC-SOC-110	28.00	EVUI-15-PVDF-SOC-110	58.00
	Union Insert	EVUI-15-PVC-SOC-M-110	28.00	EVUI-15-PVDF-SOC-M-110	58.00

OPTIONAL EQUIPMENT PRICE LIST

Accessories

Gauges are available in two price ranges, Economy and Premium and with or without gauge guards.

Economy Gauges

Description

CODE D

2" Face Steel Case	¼" Centre Back 0-200 psig/kpa	Dry Brass Internals
Part #	Suffix # (*see below)	Price
E1410	-GEB	\$ 17.00

Premium Gauges

Description

CODE D

2 ½" Face 304 S/S Case	¼" Centre Back 0-160 psig/kpa	Liquid Filled Brass or 316 S/S Internals	
Part #	Internal Material	Suffix # (*see below)	Price
Q905	Brass	-GB	\$ 37.00
P925	316 S/S	-GS	\$104.00

Gauge Guard with Economy 0-200 psig Gauge Installed

CODE D

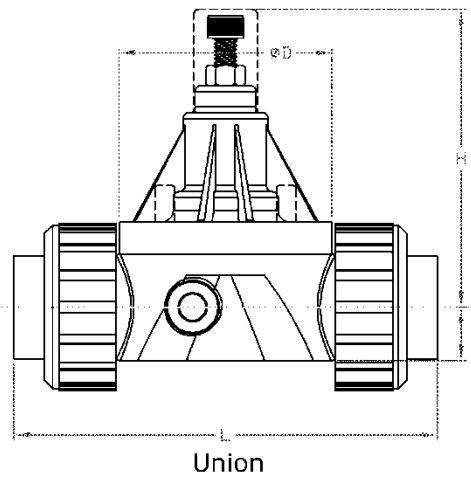
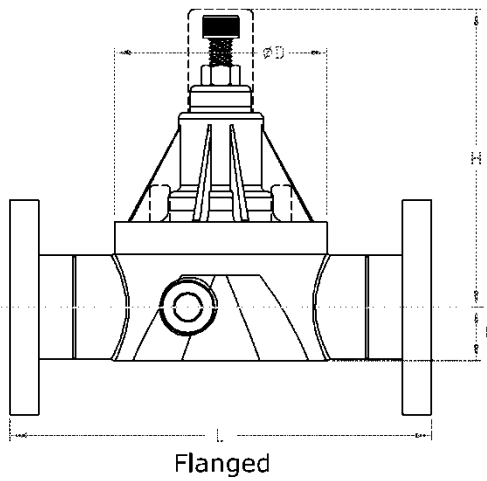
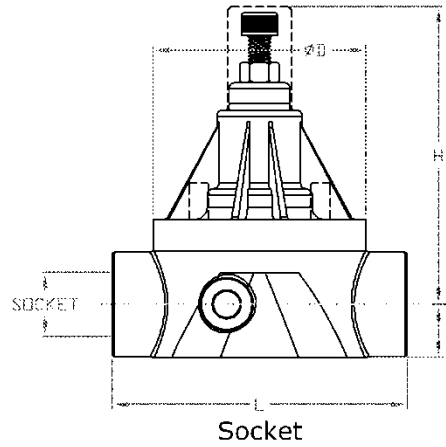
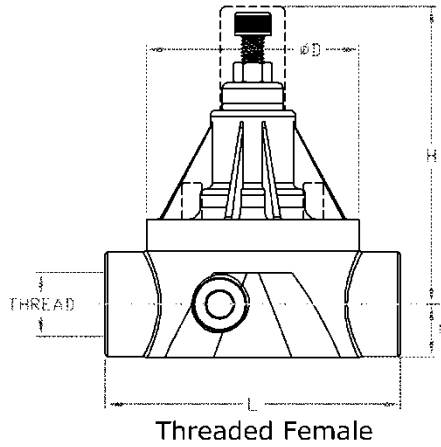
PART#	Guard / Dia. Material	Suffix# (*see Below)	Price
GGPVCV200	PVC / Viton	-GGPVCV	\$ 160.00
GGPVCT200	PVC / PTFE	-GGPVCT	164.00
GGPPV200	PP / Viton	-GGPPV	160.00
GGPPT200	PP / PTFE	-GGPPT	164.00
GGPVDFV200	PVDF / Viton	-GGPVDFV	312.00
GGPVDFV200	PVDF / PTFE	-GGPVDFV	328.00
GGPVDFT200	PVDF / PTFE	-GGPVDFT	328.00
GGPVDFT200	PVDF / PTFE	-GGPVDFT	328.00
GGPVDFT200	PVDF / PTFE	-GGPVDFT	328.00
GGVDFV200*	316S/S / 316S/S	-GGVDFV200*	405.00

The above gauges and gauge guard assemblies may be ordered separately using the Part# or ordered factory installed on ECO Valve by using Suffix # (no extra charge).

* Unit supplied with Q905 gauge.

Back Pressure Valves (Pressure Retaining Valves)

Body Configuration Model ECO-25 Dimensions
 ECO-38
 ECO-50



Nominal Size		PVC, CPVC, PP & PVDF						
NPS Inch	DIN DN	Ø D inch mm	h inch mm	H inch mm	L inch mm	L inch mm	L inch mm	L inch mm
SERIES-A					Thrd	Soc	Flg	Unin
1/4	8	2.50 63.5	0.66 16.7	4.48 113.9	3.40 86.4	3.40 86.4	N/A	6.00 152.4
3/8	10	2.50 63.5	0.66 16.7	4.48 113.9	3.40 86.4	3.40 86.4	N/A	6.00 152.4
1/2	15	2.50 63.5	0.66 16.7	4.48 113.9	3.40 86.4	3.40 86.4	5.40 137.2	6.00 152.4

Nominal Size		316L SS						
NPS Inch	DIN DN	Ø D inch mm	h inch mm	H inch mm	L inch mm	L inch mm	L inch mm	L inch mm
SERIES-A					Thrd	Soc	Flg	
1/4	8	2.50 63.5	0.60 15.2	4.47 113.5	2.50 63.5	2.50 63.5	N/A	
3/8	10	2.50 63.5	0.49 12.4	4.58 116.3	2.50 63.5	2.50 63.5	N/A	
1/2	15	2.50 63.5	0.60 15.2	4.72 113.8	2.50 63.5	2.50 63.5	6.15 156.2	

Back Pressure Valves (Pressure Retaining Valves)

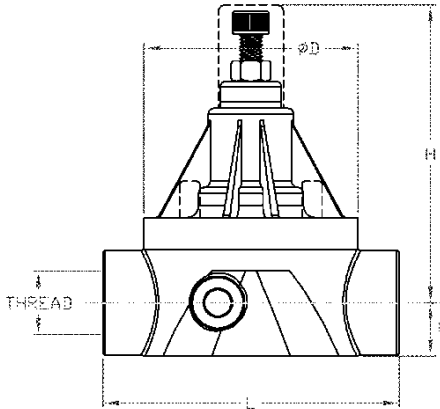
1/2" High Flow, 3/4", 1" ECO Valves

Body Configuration Model ECO-55

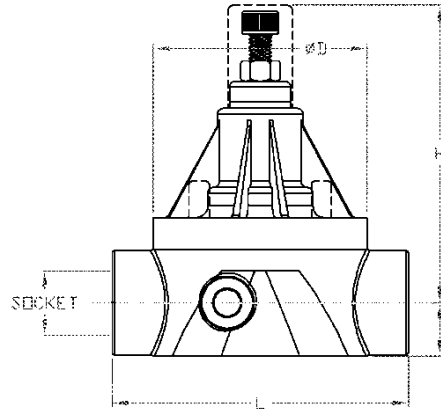
Dimensions

ECO-75

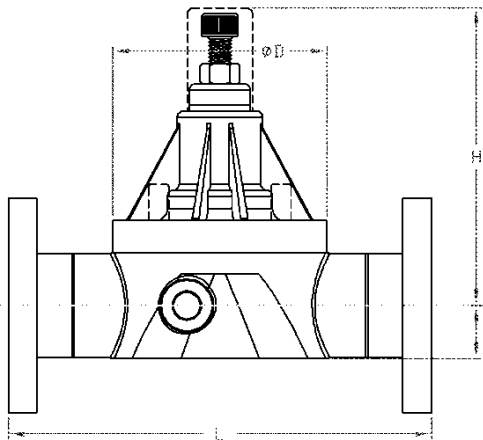
ECO-100



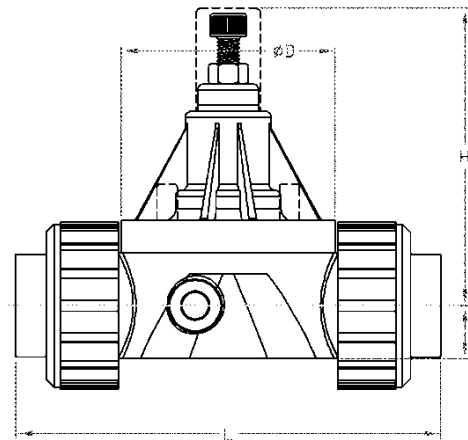
Threaded Female



Socket



Flanged



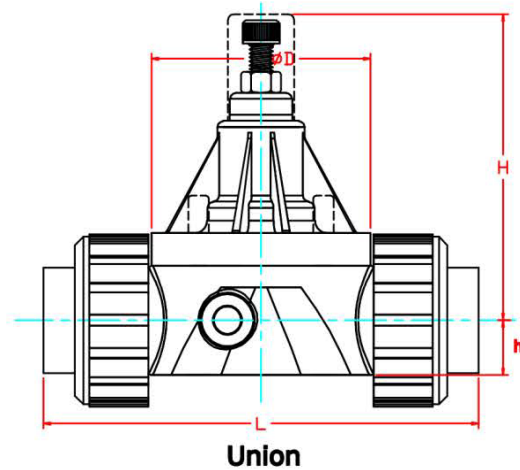
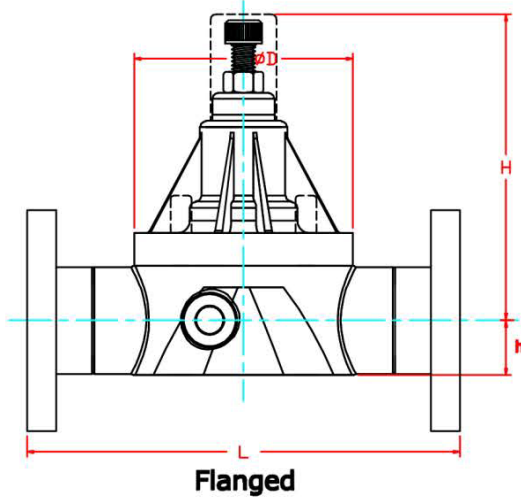
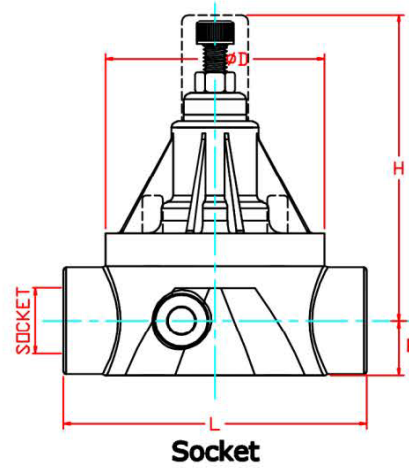
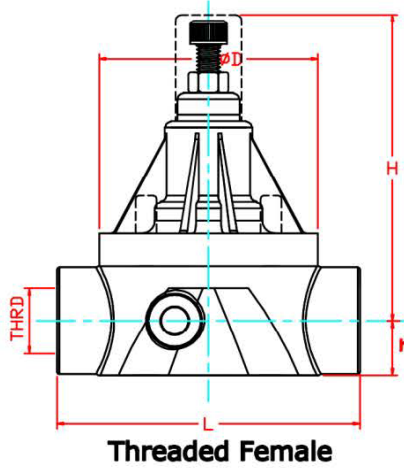
Union

Nominal Size		PVC, CPVC, PP & PVDF						
NPS Inch	DIN DN	Ø D inch mm	h inch mm	H inch mm	L inch mm	L inch mm	L inch mm	L inch mm
SERIES-B					Thrd	Soc	Flg	Union
1/2 High Flow	15	3.50 88.9	0.88 22.4	4.80 121.9	4.85 123.2	4.85 123.2	6.93 176.0	7.30 185.4
3/4	20	3.50 88.9	0.88 22.4	4.80 121.9	4.85 123.2	4.85 123.2	7.17 182.1	7.30 185.4
1	25	3.50 88.9	0.88 22.4	4.80 121.9	4.85 123.2	4.85 123.2	7.48 190.0	7.30 185.4

Nominal Size		316L SS						
NPS Inch	DIN DN	Ø D inch mm	h inch mm	H inch mm	L inch mm	L inch mm	L inch mm	L inch mm
SERIES-B					Thrd	Soc	Flg	
1/2 High Flow	15	3.50 88.9	0.63 16.0	4.80 121.9	3.50 88.9	3.50 88.9	7.17 182.1	
3/4	20	3.50 88.9	0.73 18.5	4.80 121.9	3.50 88.9	3.50 88.9	7.50 190.5	
1	25	3.50 88.9	0.86 21.8	5.10 129.5	3.50 88.9	3.50 88.9	7.66 194.6	

Back Pressure Valves (Pressure Retaining Valves)

Body Configuration Model ECO-110 Dimensions
 ECO-125
 ECO-150
 ECO-200



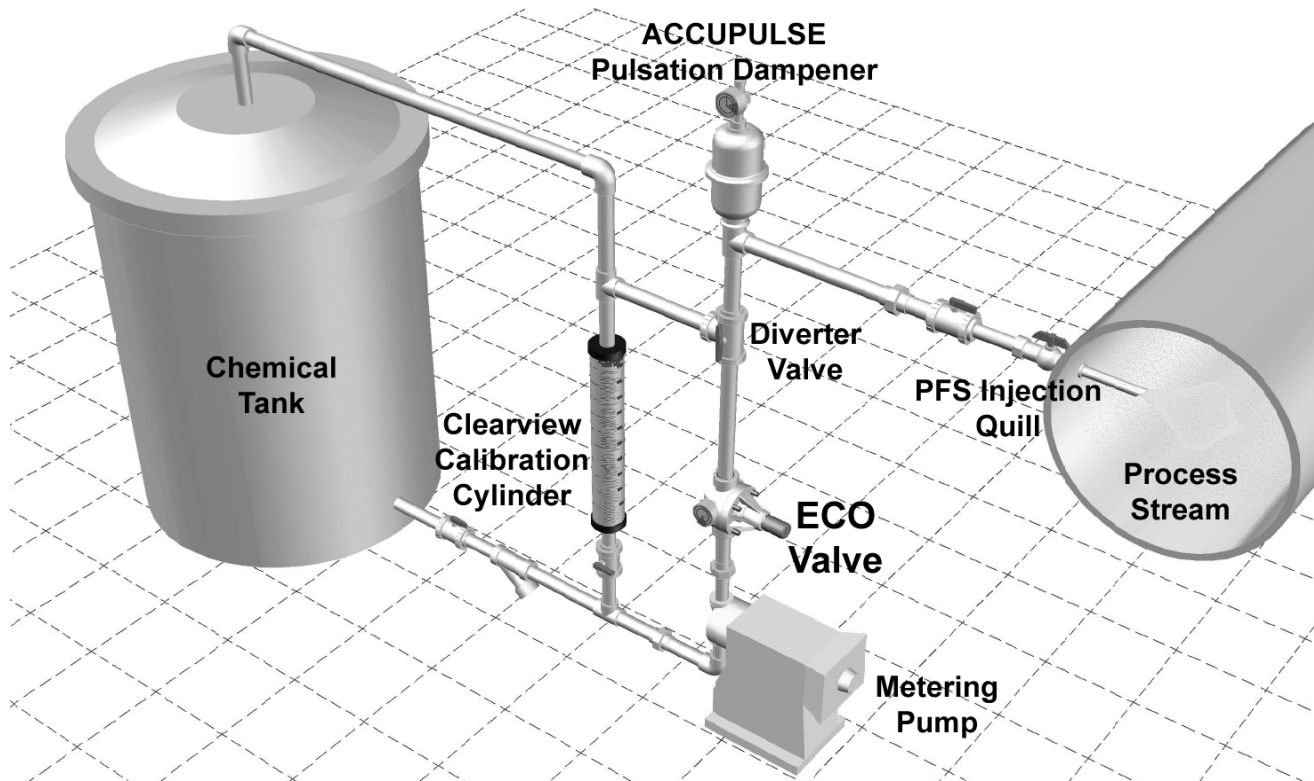
Nominal Size		PVC, CPVC, PP & PVDF						
NPS Inch	DN mm	Ø D inch mm	h inch mm	H inch mm	L inch mm	L inch mm	L inch mm	L inch mm
SERIES-C					Thrd	Soc	Flg	Union
1	25	4.00 101.6	1.47 37.3	5.75 146.1	4.90 124.5	4.90 124.5	7.59 192.8	9.96 253.0
1¼	32	4.00 101.6	1.47 37.3	5.75 146.1	4.90 124.5	4.90 124.5	7.83 198.9	9.96 253.0
1½	40	4.00 101.6	1.47 37.3	5.75 146.1	6.10 154.9	6.10 154.9	9.27 235.5	9.96 253.0
2	50	4.00 101.6	1.47 37.3	5.75 146.1	6.10 154.9	6.10 154.9	9.61 244.1	9.96 253.0

Nominal Size		316L SS					
NPS Inch	DN mm	Ø D inch mm	h inch mm	H inch mm	L inch mm	L inch mm	L inch mm
SERIES-C					Thrd	Soc	Flg
1	25	4.00 101.6	1.05 26.7	5.78 146.8	4.00 101.6	4.00 101.6	8.15 207.0
1¼	32	4.00 101.6	1.05 26.7	5.78 146.8	4.00 101.6	4.00 101.6	8.14 206.7
1½	40	4.00 101.6	1.45 36.8	5.83 148.1	4.72 119.9	4.72 119.9	9.60 243.8
2	50	4.00 101.6	1.45 36.8	5.82 147.8	4.72 119.9	4.72 119.9	9.72 246.9

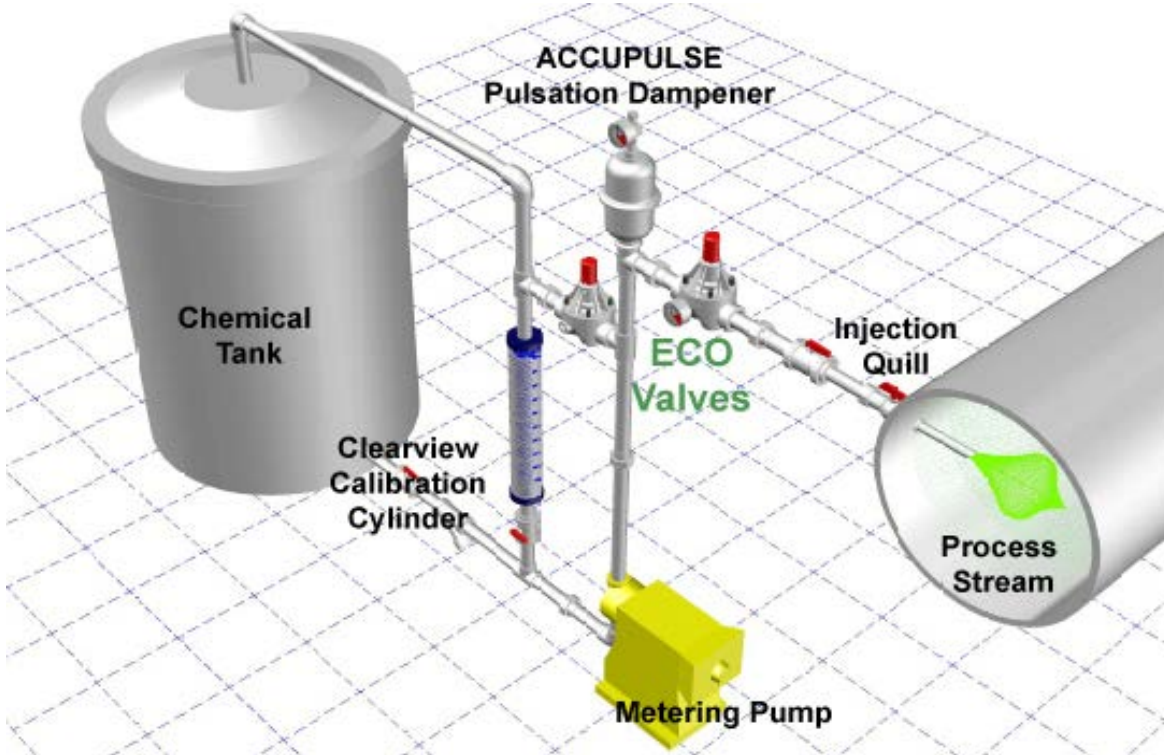
Typical Installations

The installations below are typical installation examples only. Consult your engineering department for the appropriate installation for your application or call the factory for advice

Example A: Solenoid Driven Pumps Rated Under 150 psig



Example B: System arrangement for solenoid driven (above 150 psig) or motor driven pumps.



Terms and Conditions

Minimum order for stocking distributors is \$300.00 net cost.
Minimum order for resale or OEM is \$100.00 net cost.

Special Terms are as follows:

5% discount - 20 days from date of Invoice (**Firm**) Net 30 days from date of invoice.

All outstanding invoices will have a 2% service charge applied from 60 days on and every 30 days thereafter. The account will also be put on hold, until payment, including service charge is received.

All shipments are based on F.O.B. our Plant. Delivery on standard valves is 2-3 days (dependent on size of order and availability of components from stock). All taxes are extra.

Restocking charge is 20%.

All goods to be returned for warranty inspection will require a R.G.A. # that can be obtained from our office. Goods to be shipped prepaid to our plant. This includes goods being returned for restocking.

Prices subject to change without notice.

LIMITED WARRANTY

Primary Fluid Systems Inc. (Primary) warrants its products against defects in workmanship or materials for three (3) year under normal use. Three-(3) year available when application card is completed and returned to factory.

Primary's obligations and liabilities under this warranty shall be limited to replacement of the product, or a refund of an amount not to exceed the purchase price of the product(s) to which such warranty claim is made. Repairs or replacements are made subject to our inspection of the returned product(s). Primary's decision of one of these alternatives shall be the buyer's exclusive remedy.

This warranty does not extend to damage by corrosion or other decomposition by chemical action. Primary does not warrant damages caused by (a) improper use of the product, (b) unauthorized modification or attachment to product, (c) misuse, abuse, accident or negligent handling or installation of product, or (d) alterations or repairs made by purchaser.

The materials of construction offered are recommendations only, subject in all cases to acceptance by purchaser. These recommendations do not constitute any guarantee against corrosion or decomposition, but are based on previous experience and best available information of the industry.

Statements and instructions set forth herein are based on the best information and practices known to Primary, but it should not be assumed that every acceptable safety procedure is contained herein. Of necessity Primary cannot guarantee that actions in accordance with such statements and instructions will result in the complete elimination of hazards and it assumes no liability for accidents that may occur.

Except as specifically provided herein, Primary makes no warranty, representations, promise or guarantee, either express or implied, statutory or otherwise, with respect to the product and technical information provided, including the products' quality, performance, merchantability, or fitness for a particular purpose.

In no event will Primary be liable for indirect, special, incidental, economic, covert or consequential damages arising out of the use or inability to use the product, including without limitation, damages or costs relating to the loss of profits, business and good will even if advised of the possibility of such damages. In no event shall Primary's liability exceed the amount paid by you for the product.

The warranty and remedies set forth herein are exclusive and in lieu of all others, oral or written, express or implied. No Primary dealer, distributor, agent or employee is authorized to make any modification or addition to this warranty. This warranty gives you specific legal rights and you may also have other rights which vary from state to state.