

ECO Valve Parts

Pricing Catalogue 2013

(Includes Recommended Spare Parts - Service Kits)

As Manufactured By:



PRIMARY FLUID Tel: (905) 333-8743
SYSTEMS INC. Fax: (905) 333-8746
North America Toll Free – 1-866-324-6422
E-Mail: sales@ecovalve.com
<http://www.ecovalve.com>

INDEX

SERIES "A" EXPLODED VIEW – BACK PRESSURE / PRESSURE RELIEF VALVE	3
1/4" (ECO-25), 3/8" (ECO-38), 1/2" (ECO-50) ECO VALVES	3
25 (1/4") – 38 (3/8") – 50 (1/2")	4
RECOMMENDED SPARE PARTS	9
SERVICE KIT	9
BODY CONFIGURATION	9
SERIES "B" EXPLODED VIEW – BACK PRESSURE / PRESSURE RELIEF VALVE	10
1/2" HIGH FLOW (ECO-55), 3/4" (ECO-75), 1" (ECO-100) ECO VALVE	10
55 (1/2" HIGH FLOW) – 75 (3/4") – 100 (1")	11
RECOMMENDED SPARE PARTS	16
SERVICE KIT	16
BODY CONFIGURATION	16
EXPLODED VIEW – BACK PRESSURE / PRESSURE RELIEF VALVE	17
110 (1" HIGH FLOW) – 125 (1 1/4") – 150 (1 1/2") – 200 (2")	18
RECOMMENDED SPARE PARTS	24
SERVICE KIT	24
BODY CONFIGURATION	24

Series "A" Exploded View – Back Pressure / Pressure Relief Valve 1/4" (ECO-25), 3/8" (ECO-38), 1/2" (ECO-50) ECO Valves

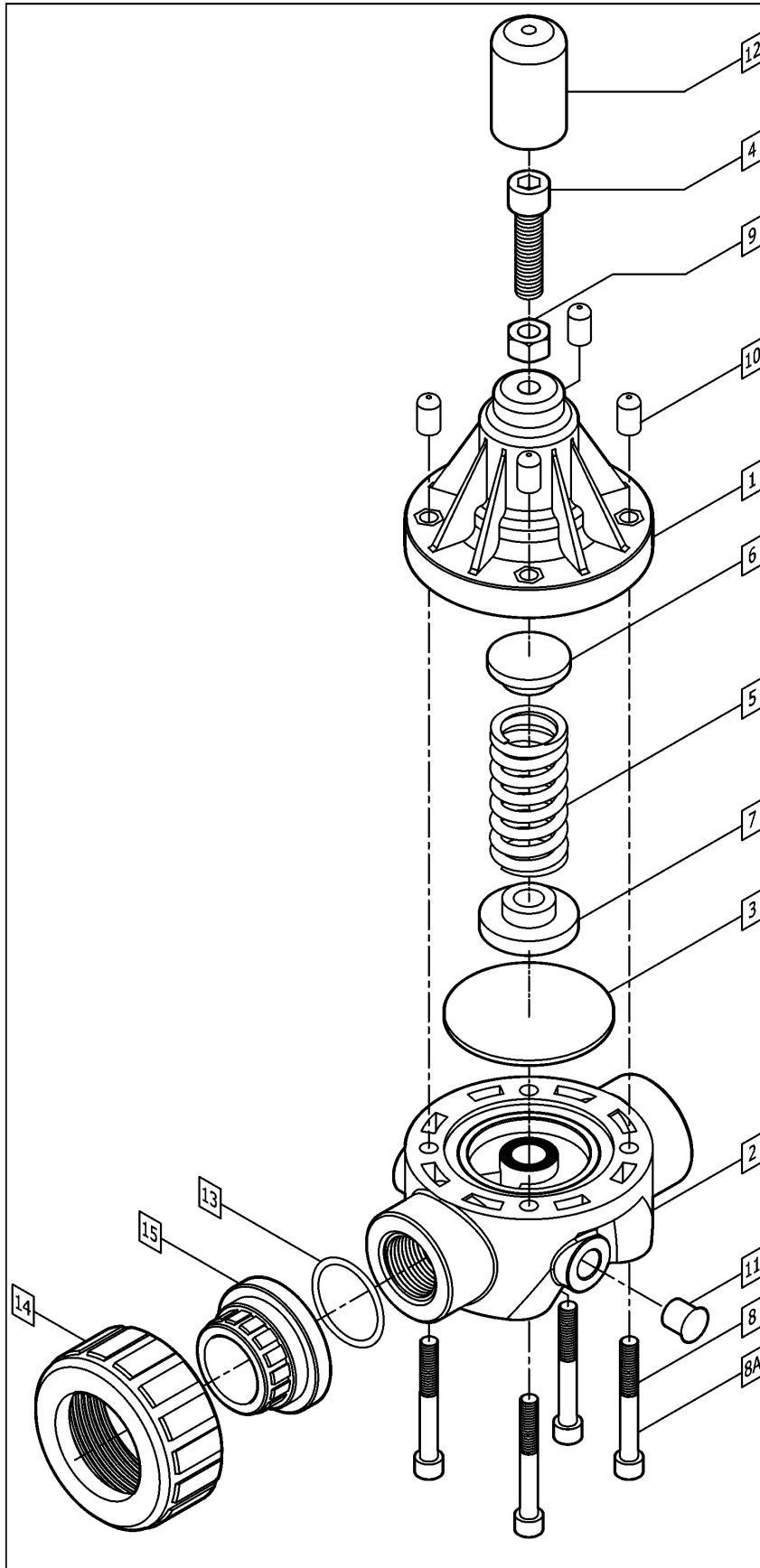


CHART OF MATERIAL/SIZE CODING: SERIES-A

∞ = PVC = (PVC TYPE 1)
∞ = CPVC = (CPVC: CORZAN)
∞ = PP = (POLYPROPYLENE)
∞ = PVDF = (POLYVINYLIDENE FLUORIDE: KYNAR)
∞ = SS = (316L STAINLESS STEEL)
Δ = NPT
Δ = BSPT
Δ = SOC (Imperial)
Δ = SOC-M (Metric)
Ω = NPT
Ω = BSPT
Ω = SOC
Ω = UNN
Ω = FLG
∅ = "BLANK" = STD PTFE Laminated EPDM
∅ = V = OPTIONAL VITON
∅ = E = OPTIONAL EPDM
∅ = P = OPTIONAL PVC
Φ = 25 = 1/4" (DN 8) VALVES
Φ = 38 = 3/8" (DN 10) VALVES
Φ = 50 = 1/2" (DN 15) VALVES
⊗ = G = GREEN = 1/4" (DN 8) VALVES
⊗ = B = BROWN = 3/8" (DN 10) VALVES
⊗ = Y = YELLOW = 1/2" (DN 15) VALVES
Σ = V = VITON
Σ = E = EPDM
Σ = T = PTFE Encapsulated VITON

ITEM	QTY	DESCRIPTION	PART NUMBER
1	1	BONNET	EVT-1CPVC-25
2	1	BODY	EVB-2∞-Φ-Ω
3	1	DIAPHRAGM	EVD-3-25-∅
4	1	ADJUSTING BOLT	EVAB-4-25
5	1	SPRING (Ni Plated)	EVS-5-25
6	1	TOP DISC	EVD-6-25
7	1	BOTTOM DISC	EVBD-7-25
8	4	BOLTS SS (Plastic)	EVSB-8-25
8A	4	BOLTS SS (Metal)	EVSB-8A-25
9	1	LOCK NUT SS	EVBN-9-25
10	4	BOLT CAP COVER	EVBC-10-25
11	2	GAUGE PORT CAP	EVGC-11
12	1	BONNET CAP COVER	EVC-12-∅-25
13	2	UNION SEAL O-RING*	EVO-13-25-Σ
14	2	UNION NUT*	EVUN-14-∞-25
15	2	UNION INSERT*	EVUI-15-∞-Δ-Φ

UNDERLINED ITEMS REQUIRE CODES FROM ABOVE CHART
*OPTIONAL FEATURE (AVAILABLE IN PLASTIC ONLY)

DO NOT COPY WITHOUT PRIOR WRITTEN APPROVAL FROM PRIMARY FLUID SYSTEMS INC.

PRIMARY FLUID SYSTEMS INC.
1050 Cooke Blvd., Burlington, Ontario L7T 4A8

**ECO BACK PRESSURE OR PRESSURE RELIEF VALVE
EXPLODED PARTS VIEW**

DATE ISSUED: 18-DCT-11 | SCALE: NTS | SHEET: 1 OF 1
PROJECT: ECO VALVE A-SERIES | DRAWN BY: VICTOR V.
APPROVED BY: DWG NO: EV-APA-253850STD-XPL | REV.#: 4

ECO Valve

25 (1/4") – 38 (3/8") – 50 (1/2")

CODE E

Item #	Description	Material	Size	Part #	Price
1	Bonnet	CPVC (Corzan)	1/4", 3/8", 1/2"	EVT-1CPVC-25	79.00
	Bonnet	316 S/S	1/4", 3/8", 1/2"	EVT-1SS-25	179.00
	Bonnet	Aluminum	1/4", 3/8", 1/2"	EVT-1AL-25	72.00
2	Body, Back & Pressure Relief	CPVC (Corzan)	1/2"	EVB-2CPVC-50-BSPT	206.00
	Body, Back & Pressure Relief	CPVC (Corzan)	1/2"	EVB-2CPVC-50-NPT	206.00
	Body, Back & Pressure Relief	CPVC (Corzan)	1/2"	EVB-2CPVC-50-FLG	316.00
	Body, Back & Pressure Relief	CPVC (Corzan)	1/2"	EVB-2CPVC-50-SOC	206.00
	Body, Back & Pressure Relief	CPVC (Corzan)	1/2"	EVB-2CPVC-50-SOC-M	206.00
	Body, Back & Pressure Relief	CPVC (Corzan)	1/2"	EVB-2CPVC-50-UNN	277.00
	Body, Back & Pressure Relief	CPVC (Corzan)	3/8"	EVB-2CPVC-38-BSPT	172.00
	Body, Back & Pressure Relief	CPVC (Corzan)	3/8"	EVB-2CPVC-38-NPT	172.00
	Body, Back & Pressure Relief	CPVC (Corzan)	3/8"	EVB-2CPVC-38-SOC	172.00
	Body, Back & Pressure Relief	CPVC (Corzan)	3/8"	EVB-2CPVC-38-SOC-M	172.00
	Body, Back & Pressure Relief	CPVC (Corzan)	3/8"	EVB-2CPVC-38-UNN	187.00
	Body, Back & Pressure Relief	CPVC (Corzan)	1/4"	EVB-2CPVC-25-BSPT	162.00
	Body, Back & Pressure Relief	CPVC (Corzan)	1/4"	EVB-2CPVC-25-NPT	162.00
	Body, Back & Pressure Relief	CPVC (Corzan)	1/4"	EVB-2CPVC-25-SOC	162.00
	Body, Back & Pressure Relief	CPVC (Corzan)	1/4"	EVB-2CPVC-25-SOC-M	162.00
	Body, Back & Pressure Relief	CPVC (Corzan)	1/4"	EVB-2CPVC-25-UNN	178.00
	Body, Back & Pressure Relief	Polypropylene	1/2"	EVB-2PP-50-BSPT	182.00
	Body, Back & Pressure Relief	Polypropylene	1/2"	EVB-2PP-50-NPT	182.00
	Body, Back & Pressure Relief	Polypropylene	1/2"	EVB-2PP-50-FLG	300.00
	Body, Back & Pressure Relief	Polypropylene	1/2"	EVB-2PP-50-SOC	182.00
	Body, Back & Pressure Relief	Polypropylene	1/2"	EVB-2PP-50-SOC-M	182.00
Body, Back & Pressure Relief	Polypropylene	1/2"	EVB-2PP-50-UNN	205.00	
Body, Back & Pressure Relief	Polypropylene	3/8"	EVB-2PP-38-BSPT	148.00	
Body, Back & Pressure Relief	Polypropylene	3/8"	EVB-2PP-38-NPT	148.00	
Body, Back & Pressure Relief	Polypropylene	3/8"	EVB-2PP-38-SOC	148.00	
Body, Back & Pressure Relief	Polypropylene	3/8"	EVB-2PP-38-SOC-M	148.00	
Body, Back & Pressure Relief	Polypropylene	3/8"	EVB-2PP-38-UNN	157.00	

Item #	Description	Material	Size	Part #	Price
	Body, Back & Pressure Relief	Polypropylene	1/4"	EVB-2PP-25-BSPT	133.00
	Body, Back & Pressure Relief	Polypropylene	1/4"	EVB-2PP-25-NPT	133.00
	Body, Back & Pressure Relief	Polypropylene	1/4"	EVB-2PP-25-SOC	133.00
	Body, Back & Pressure Relief	Polypropylene	1/4"	EVB-2PP-25-SOC-M	133.00
	Body, Back & Pressure Relief	Polypropylene	1/4"	EVB-2PP-25-UNN	142.00
	Body, Back & Pressure Relief	PVC	1/2"	EVB-2PVC-50-BSPT	159.00
	Body, Back & Pressure Relief	PVC	1/2"	EVB-2PVC-50-NPT	159.00
	Body, Back & Pressure Relief	PVC	1/2"	EVB-2PVC-50-FLG	237.00
	Body, Back & Pressure Relief	PVC	1/2"	EVB-2PVC-50-SOC	159.00
	Body, Back & Pressure Relief	PVC	1/2"	EVB-2PVC-50-SOC-M	159.00
	Body, Back & Pressure Relief	PVC	1/2"	EVB-2PVC-50-UNN	189.00
	Body, Back & Pressure Relief	PVC	3/8"	EVB-2PVC-38-BSPT	143.00
	Body, Back & Pressure Relief	PVC	3/8"	EVB-2PVC-38-NPT	143.00
	Body, Back & Pressure Relief	PVC	3/8"	EVB-2PVC-38-SOC	143.00
	Body, Back & Pressure Relief	PVC	3/8"	EVB-2PVC-38-SOC-M	143.00
	Body, Back & Pressure Relief	PVC	3/8"	EVB-2PVC-38-UNN	152.00
	Body, Back & Pressure Relief	PVC	1/4"	EVB-2PVC-25-BSPT	129.00
	Body, Back & Pressure Relief	PVC	1/4"	EVB-2PVC-25-NPT	129.00
	Body, Back & Pressure Relief	PVC	1/4"	EVB-2PVC-25-SOC	129.00
	Body, Back & Pressure Relief	PVC	1/4"	EVB-2PVC-25-SOC-M	129.00
	Body, Back & Pressure Relief	PVC	1/4"	EVB-2PVC-25-UNN	140.00
	Body, Back & Pressure Relief	PVDF	1/2"	EVB-2PVDF-50-BPST	332.00
	Body, Back & Pressure Relief	PVDF	1/2"	EVB-2PVDF-50-NPT	332.00
	Body, Back & Pressure Relief	PVDF	1/2"	EVB-2PVDF-50-FLG	553.00
	Body, Back & Pressure Relief	PVDF	1/2"	EVB-2PVDF-50-SOC	332.00
	Body, Back & Pressure Relief	PVDF	1/2"	EVB-2PVDF-50-SOC-M	332.00
	Body, Back & Pressure Relief	PVDF	1/2"	EVB-2PVDF-50-UNN	372.00
	Body, Back & Pressure Relief	PVDF	3/8"	EVB-2PVDF-38-BSPT	301.00
	Body, Back & Pressure Relief	PVDF	3/8"	EVB-2PVDF-38-NPT	301.00
	Body, Back & Pressure Relief	PVDF	3/8"	EVB-2PVDF-38-SOC	301.00
	Body, Back & Pressure Relief	PVDF	3/8"	EVB-2PVDF-38-SOC-M	304.00

Item #	Description	Material	Size	Part #	Price
	Body, Back & Pressure Relief	PVDF	3/8"	EVB-2PVDF-38-UNN	331.00
	Body, Back & Pressure Relief	PVDF	1/4"	EVB-2PVDF-25-BSPT	237.00
	Body, Back & Pressure Relief	PVDF	1/4"	EVB-2PVDF-25-NPT	237.00
	Body, Back & Pressure Relief	PVDF	1/4"	EVB-2PVDF-25-SOC	237.00
	Body, Back & Pressure Relief	PVDF	1/4"	EVB-2PVDF-25-SOC-M	237.00
	Body, Back & Pressure Relief	PVDF	1/4"	EVB-2PVDF-25-UNN	263.00
	Body, Back & Pressure Relief	Stainless Steel	1/2"	EVB-2SS-50-BSP	369.00
	Body, Back & Pressure Relief	Stainless Steel	1/2"	EVB-2SS-50-NPT	369.00
	Body, Back & Pressure Relief	Stainless Steel	1/2"	EVB-2SS-50-FLG	660.00
	Body, Back & Pressure Relief	Stainless Steel	1/2"	EVB-2SS-50-SOC	369.00
	Body, Back & Pressure Relief	Stainless Steel	1/2"	EVB-2SS-50-SOC-M	369.00
	Body, Back & Pressure Relief	Stainless Steel	3/8"	EVB-2SS-38-BSP	281.00
	Body, Back & Pressure Relief	Stainless Steel	3/8"	EVB-2SS-38-NPT	281.00
	Body, Back & Pressure Relief	Stainless Steel	3/8"	EVB-2SS-38-SOC	281.00
	Body, Back & Pressure Relief	Stainless Steel	3/8"	EVB-2SS-38-SOC-M	281.00
	Body, Back & Pressure Relief	Stainless Steel	1/4"	EVB-2SS-25-BSP	268.00
	Body, Back & Pressure Relief	Stainless Steel	1/4"	EVB-2SS-25-NPT	268.00
	Body, Back & Pressure Relief	Stainless Steel	1/4"	EVB-2SS-25-SOC	268.00
	Body, Back & Pressure Relief	Stainless Steel	1/4"	EVB-2SS-25-SOC-M	268.00
3	Diaphragm	EPDM	1/4", 3/8", 1/2"	EVD-3-25-E	26.00
	Diaphragm	PVC	1/4", 3/8", 1/2"	EVD-3-25-P	26.00
	Diaphragm	Viton	1/4", 3/8", 1/2"	EVD-3-25-V	26.00
	Diaphragm	PTFE/EPDM	1/4", 3/8", 1/2"	EVD-3-25	26.00
4	Adjusting Bolt	Stainless Steel	1/4", 3/8", 1/2"	EVAB-4-25	1.60
5	Spring	Stainless Steel (Nickel Plated)	1/4", 3/8", 1/2"	EVS-5-25	17.00
6	Top Disc	Polypropylene	1/4", 3/8", 1/2"	EVTD-6-25	4.80
7	Bottom Disc	Polypropylene	1/4", 3/8", 1/2"	EVBD-7-25	6.35
8	Bolts SS (Plastic)	Stainless Steel	1/4", 3/8", 1/2"	EVSB-8-25	0.60
8A	Bolts SS (Metal)	Stainless Steel	1/4", 3/8", 1/2"	EVSB-8A-25	0.60
9	Lock Nut SS	Stainless Steel	1/4", 3/8", 1/2"	EVBN-9-25	0.55
10	Bolt Cap Cover	Vinyl	1/4", 3/8", 1/2"	EVBC-10-25	0.20
11	Gauge Port Cap	Nylon	1/4", 3/8", 1/2"	EVGC-11	0.25
12	Bonnet Cap Cover	Vinyl	1/4", 3/8", 1/2"	EVTC-12-BK-25	0.65
	Bonnet Cap Cover	Vinyl	1/4", 3/8", 1/2"	EVTC-12-BR-25	0.65
	Bonnet Cap Cover	Vinyl	1/4", 3/8", 1/2"	EVTC-12-G-25	0.65

Item #	Description	Material	Size	Part #	Price
	Bonnet Cap Cover	Vinyl	1/4", 3/8", 1/2"	EVTC-12-Y-25	0.65
13	Union Seal O-Ring	EPDM	1/4", 3/8", 1/2"	EVO-13-25-E	0.95
	Union Seal O-Ring	PTFE Encapsulated Viton	1/4", 3/8", 1/2"	EVO-13-25-T	5.30
	Union Seal O-Ring	Viton	1/4", 3/8", 1/2"	EVO-13-25-V	1.85
14	Union Nut	CPVC	1/4", 3/8", 1/2"	EVUN-14-CPVC-25	7.15
	Union Nut	PP	1/4", 3/8", 1/2"	EVUN-14-PP-25	7.20
	Union Nut	PVC	1/4", 3/8", 1/2"	EVUN-14-PVC-25	4.15
	Union Nut	PVDF	1/4", 3/8", 1/2"	EVUN-14-PVDF-25	13.95
15	Union Insert	CPVC (Corzan)	1/2"	EVUI-15-CPVC-BSP-50	6.70
	Union Insert	CPVC (Corzan)	1/2"	EVUI-15-CPVC-NPT-50	6.70
	Union Insert	CPVC (Corzan)	1/2"	EVUI-15-CPVC-SOC-50	3.40
	Union Insert	CPVC (Corzan)	1/2"	EVUI-15-CPVC-SOC-M-50	3.40
	Union Insert	CPVC (Corzan)	3/8"	EVUI-15-CPVC-BSPT-38	6.70
	Union Insert	CPVC (Corzan)	3/8"	EVUI-15-CPVC-NPT-38	6.70
	Union Insert	CPVC (Corzan)	3/8"	EVUI-15-CPVC-SOC-38	3.40
	Union Insert	CPVC (Corzan)	3/8"	EVUI-15-CPVC-SOC-M-38	3.40
	Union Insert	CPVC (Corzan)	1/4"	EVUI-15-CPVC-BSPT-25	6.20
	Union Insert	CPVC (Corzan)	1/4"	EVUI-15-CPVC-NPT-25	6.20
	Union Insert	CPVC (Corzan)	1/4"	EVUI-15-CPVC-SOC-25	3.35
	Union Insert	CPVC (Corzan)	1/4"	EVUI-15-CPVC-SOC-M-25	3.35
	Union Insert	Polypropylene	1/2"	EVUI-15-PP-BSP-50	7.20
	Union Insert	Polypropylene	1/2"	EVUI-15-PP-NPT-50	7.20
	Union Insert	Polypropylene	1/2"	EVUI-15-PP-SOC-50	3.20
	Union Insert	Polypropylene	1/2"	EVUI-15-PP-SOC-M-50	3.20
	Union Insert	Polypropylene	3/8"	EVUI-15-PP-BSPT-38	7.90
	Union Insert	Polypropylene	3/8"	EVUI-15-PP-NPT-38	7.90
	Union Insert	Polypropylene	3/8"	EVUI-15-PP-SOC-38	3.20
	Union Insert	Polypropylene	3/8"	EVUI-15-PP-SOC-M-38	3.20
	Union Insert	Polypropylene	1/4"	EVUI-15-PP-BSPT-25	7.70
	Union Insert	Polypropylene	1/4"	EVUI-15-PP-NPT-25	7.70
	Union Insert	Polypropylene	1/4"	EVUI-15-PP-SOC-25	3.15
	Union Insert	Polypropylene	1/4"	EVUI-15-PP-SOC-M-25	3.15
	Union Insert	PVC	1/2"	EVUI-15-PVC-BSP-50	3.80
	Union Insert	PVC	1/2"	EVUI-15-PVC-NPT-50	3.80
	Union Insert	PVC	1/2"	EVUI-15-PVC-SOC-50	2.00
	Union Insert	PVC	1/2"	EVUI-15-PVC-SOC-M-50	2.00
	Union Insert	PVC	3/8"	EVUI-15-PVC-BSPT-38	4.90
	Union Insert	PVC	3/8"	EVUI-15-PVC-NPT-38	4.90
	Union Insert	PVC	3/8"	EVUI-15-PVC-SOC-38	2.00
	Union Insert	PVC	3/8"	EVUI-15-PVC-SOC-M-38	2.00
	Union Insert	PVC	1/4"	EVUI-15-PVC-BSPT-25	4.70
	Union Insert	PVC	1/4"	EVUI-15-PVC-NPT-25	4.70

Item #	Description	Material	Size	Part #	Price
	Union Insert	PVC	1/4"	EVUI-15-PVC-SOC-25	1.95
	Union Insert	PVC	1/4"	EVUI-15-PVC-SOC-M-25	1.95
	Union Insert	PVDF	1/2"	EVUI-15-PVDF-BSP-50	13.80
	Union Insert	PVDF	1/2"	EVUI-15-PVDF-NPT-50	13.80
	Union Insert	PVDF	1/2"	EVUI-15-PVDF-SOC-50	11.80
	Union Insert	PVDF	1/2"	EVUI-15-PVDF-SOC-M-50	11.80
	Union Insert	PVDF	3/8"	EVUI-15-PVDF-BSPT-38	13.80
	Union Insert	PVDF	3/8"	EVUI-15-PVDF-NPT-38	13.80
	Union Insert	PVDF	3/8"	EVUI-15-PVDF-SOC-38	11.60
	Union Insert	PVDF	3/8"	EVUI-15-PVDF-SOC-M-38	11.60
	Union Insert	PVDF	1/4"	EVUI-15-PVDF-BSPT-25	13.60
	Union Insert	PVDF	1/4"	EVUI-15-PVDF-NPT-25	13.60
	Union Insert	PVDF	1/4"	EVUI-15-PVDF-SOC-25	11.40
	Union Insert	PVDF	1/4"	EVUI-15-PVDF-SOC-M-25	11.40

Terms

Prices quoted are in Canadian Funds

5% 20 days (from date of invoice)

Net 30 days firm (upon approved credit)

F.O.B. Burlington, Ontario, Canada

All Freight charges are extra

Stock to (1) one week normal delivery on standard items

Options and specials consult factory

Prices subject to change without notice

Minimum order of \$100.00 net

Recommended Spare Parts Service Kit

CODE E

Part #	To Suit Model #	Description	Price
EV25E	Eco Valve 1/4"	EPDM Diaph. Spring, Top and Bottom Disc	54.50
EV25P	Eco Valve 1/4"	PVC Diaph., Spring, Top and Bottom Disc	54.50
EV25V	Eco Valve 1/4"	Viton Diaph., Spring, Top and Bottom Disc	54.50
EV25T	Eco Valve 1/4"	PTFE/EPDM Diaph., Spring, Top and Bottom Disc	54.50
EV38E	Eco Valve 3/8"	EPDM Diaph. Spring, Top and Bottom Disc	54.50
EV38P	Eco Valve 3/8"	PVC Diaph., Spring, Top and Bottom Disc	54.50
EV38V	Eco Valve 3/8"	Viton Diaph., Spring, Top and Bottom Disc	54.50
EV38T	Eco Valve 3/8"	PTFE/EPDM Diaph., Spring, Top and Bottom Disc	54.50
EV50E	Eco Valve 1/2"	EPDM Diaph. Spring, Top and Bottom Disc	54.50
EV50P	Eco Valve 1/2"	PVC Diaph., Spring, Top and Bottom Disc	54.50
EV50V	Eco Valve 1/2"	Viton Diaph., Spring, Top and Bottom Disc	54.50
EV50T	Eco Valve 1/2"	PTFE/EPDM Diaph., Spring, Top and Bottom Disc	54.50

Body Configuration

Back Pressure Valves (Pressure Retaining Valves)
 Body Configuration Model ECO-25 Dimensions
 ECO-38
 ECO-50

Nominal Size		PVC, CPVC, PP & PVDF							
NPS Inch	DIN DN	Ø D inch mm	h inch mm	H inch mm	L inch mm	L inch mm	L inch mm	L inch mm	
SERIES-A									
1/4	8	2.50 63.5	0.66 16.7	4.48 113.9	3.40 86.4	3.40 86.4	N/A	6.00 152.4	
3/8	10	2.50 63.5	0.66 16.7	4.48 113.9	3.40 86.4	3.40 86.4	N/A	6.00 152.4	
1/2	15	2.50 63.5	0.66 16.7	4.48 113.9	3.40 86.4	3.40 86.4	5.40 137.2	6.00 152.4	

Nominal Size		316L SS						
NPS Inch	DIN DN	Ø D inch mm	h inch mm	H inch mm	L inch mm	L inch mm	L inch mm	
SERIES-A								
1/4	8	2.50 63.5	0.60 15.2	4.47 113.5	2.50 63.5	2.50 63.5	N/A	
3/8	10	2.50 63.5	0.49 12.4	4.58 115.3	2.50 63.5	2.50 63.5	N/A	
1/2	15	2.50 63.5	0.60 15.2	4.72 119.8	2.50 63.5	2.50 63.5	6.25 158.8	

Series "B" Exploded View – Back Pressure / Pressure Relief Valve
1/2" High Flow (ECO-55), 3/4" (ECO-75), 1" (ECO-100) ECO Valve

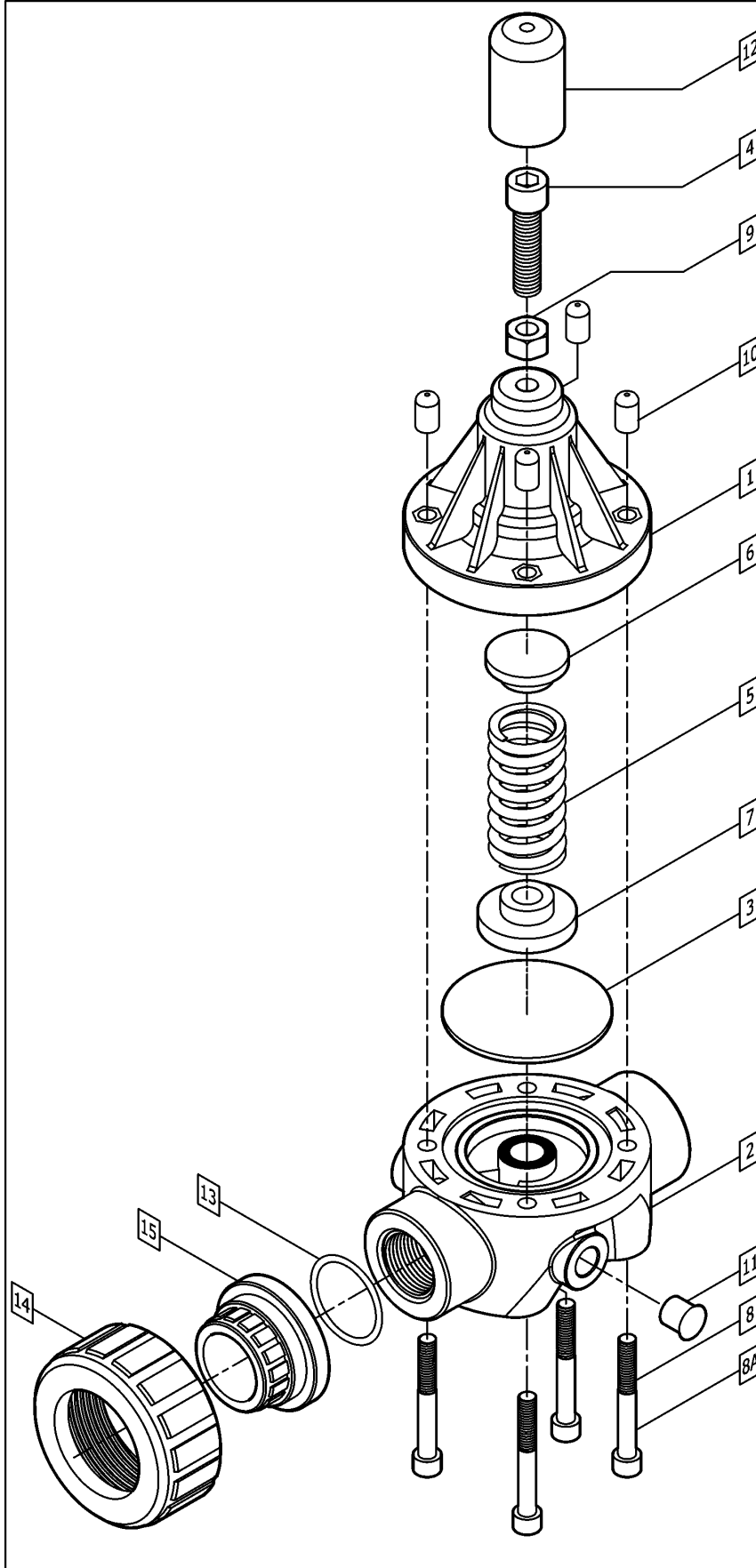


CHART OF MATERIAL/SIZE CODING: SERIES-B

∞ = PVC = (PVC TYPE 1)
∞ = CPVC = (CPVC: CORZAN)
∞ = PP = (POLYPROPYLENE)
∞ = PVDF = (POLYVINYLIDENE FLUORIDE: KYNAR)
∞ = SS = (316L STAINLESS STEEL)
Δ = NPT
Δ = BSPT
Δ = SOC (Imperial)
Δ = SOC-M (Metric)
Ω = NPT
Ω = BSPT
Ω = SOC
Ω = UNN
Ω = FLG
∅ = "BLANK" = STD PTFE Laminated EPDM
∅ = V = OPTIONAL VITON
∅ = E = OPTIONAL EPDM
∅ = P = OPTIONAL PVC
Φ = 55 = 1/2" (DN 15) HIGH FLOW VALVES
Φ = 75 = 3/4" (DN 20) VALVES
Φ = 10 = 1" (DN 25) VALVES
⊗ = Y = YELLOW = 1/2" (DN 15) HIGH FLOW VALVES
⊗ = R = RED = 3/4" (DN 20) VALVES
⊗ = B = BLUE = 1" (DN 25) VALVES
Σ = V = VITON
Σ = E = EPDM
Σ = T = PTFE Encapsulated VITON

ITEM	QTY	DESCRIPTION	PART NUMBER
1	1	BONNET	EVT-1CPVC-51
2	1	BODY	EVB-2∞-Φ-Ω
3	1	DIAPHRAGM	EVD-3-51-∅
4	1	ADJUSTING BOLT	EVAB-4-51
5	1	SPRING (NI Plated)	EVS-5-51
6	1	TOP DISC	EVTD-6-51
7	1	BOTTOM DISC	EVBD-7-51
8	4	BOLTS SS (Plastic)	EVSB-8-51
8A	4	BOLTS SS (Metal)	EVSB-8A-51
9	1	LOCK NUT SS	EVBN-9-51
10	4	BOLT CAP COVER	EVBC-10-51
11	2	GAUGE PORT CAP	EVGC-11
12	1	BONNET CAP COVER	EVTC-12-∅-51
13	2	UNION SEAL O-RING*	EVO-13-51-Σ
14	2	UNION NUT*	EVUN-14-∞-51
15	2	UNION INSERT*	EVUI-15-∞-Δ-Φ

UNDERLINED ITEMS REQUIRE CODES FROM ABOVE CHART
 *OPTIONAL FEATURE (AVAILABLE IN PLASTIC ONLY)

DO NOT COPY WITHOUT PRIOR WRITTEN APPROVAL FROM PRIMARY FLUID SYSTEMS INC.

PRIMARY FLUID SYSTEMS INC.
 1050 Cooke Blvd., Burlington, Ontario L7T 4A8

ECO BACK PRESSURE OR PRESSURE RELIEF VALVE
EXPLODED PARTS VIEW

DATE ISSUED: 18-OCT-11 | SCALE: NTS | SHEET: 1 OF 1
 PROJECT: ECO VALVE B-SERIES | DRAWN BY: VICTOR W.

APPROVED BY: | DWG NO: EV-BPA-557510STD-XPL | REV.# 4

ECO Valve

55 (1/2" High Flow) – 75 (3/4") – 100 (1")

CODE E

Item #	Description	Material	Size	Part #	Price
1	Bonnet	CPVC (Corzan)	1/2", 3/4", 1"	EVT-1CPVC-51	103.00
	Bonnet	316 S/S	1/2", 3/4", 1"	EVT-1SS-51	204.00
	Bonnet	Aluminum	1/2", 3/4", 1"	EVT-1AL-51	99.00
2	Body, Back & Pressure Relief	CPVC (Corzan)	1"	EVB-2CPVC-10-BSP	420.00
	Body, Back & Pressure Relief	CPVC (Corzan)	1"	EVB-2CPVC-10-NPT	420.00
	Body, Back & Pressure Relief	CPVC (Corzan)	1"	EVB-2CPVC-10-FLG	525.00
	Body, Back & Pressure Relief	CPVC (Corzan)	1"	EVB-2CPVC-10-SOC	420.00
	Body, Back & Pressure Relief	CPVC (Corzan)	1"	EVB-2CPVC-10-SOC-M	420.00
	Body, Back & Pressure Relief	CPVC (Corzan)	1"	EVB-2CPVC-10-UNN	435.00
	Body, Back & Pressure Relief	CPVC (Corzan)	3/4"	EVB-2CPVC-75-BSP	282.00
	Body, Back & Pressure Relief	CPVC (Corzan)	3/4"	EVB-2CPVC-75-NPT	282.00
	Body, Back & Pressure Relief	CPVC (Corzan)	3/4"	EVB-2CPVC-75-FLG	367.00
	Body, Back & Pressure Relief	CPVC (Corzan)	3/4"	EVB-2CPVC-75-SOC	282.00
	Body, Back & Pressure Relief	CPVC (Corzan)	3/4"	EVB-2CPVC-75-SOC-M	282.00
	Body, Back & Pressure Relief	CPVC (Corzan)	3/4"	EVB-2CPVC-75-UNN	313.00
	Body, Back & Pressure Relief	CPVC (Corzan)	1/2"	EVB-2CPVC-55-BSP	267.00
	Body, Back & Pressure Relief	CPVC (Corzan)	1/2"	EVB-2CPVC-55-NPT	267.00
	Body, Back & Pressure Relief	CPVC (Corzan)	1/2"	EVB-2CPVC-55-FLG	347.00
	Body, Back & Pressure Relief	CPVC (Corzan)	1/2"	EVB-2CPVC-55-SOC	267.00
	Body, Back & Pressure Relief	CPVC (Corzan)	1/2"	EVB-2CPVC-55-SOC-M	267.00
	Body, Back & Pressure Relief	CPVC (Corzan)	1/2"	EVB-2CPVC-55-UNN	277.00
	Body, Back & Pressure Relief	Polypropylene	1"	EVB-2PP-10-BSP	307.00
	Body, Back & Pressure Relief	Polypropylene	1"	EVB-2PP-10-NPT	307.00
	Body, Back & Pressure Relief	Polypropylene	1"	EVB-2PP-10-FLG	568.00
Body, Back & Pressure Relief	Polypropylene	1"	EVB-2PP-10-SOC	307.00	
Body, Back & Pressure Relief	Polypropylene	1"	EVB-2PP-10-SOC-M	307.00	
Body, Back & Pressure Relief	Polypropylene	1"	EVB-2PP-10-UNN	288.00	
Body, Back & Pressure Relief	Polypropylene	3/4"	EVB-2PP-75-BSP	238.00	
Body, Back & Pressure Relief	Polypropylene	3/4"	EVB-2PP-75-NPT	238.00	
Body, Back & Pressure Relief	Polypropylene	3/4"	EVB-2PP-75-FLG	495.00	

Item #	Description	Material	Size	Part #	Price
	Body, Back & Pressure Relief	Polypropylene	3/4"	EVB-2PP-75-SOC	238.00
	Body, Back & Pressure Relief	Polypropylene	3/4"	EVB-2PP-75-SOC-M	238.00
	Body, Back & Pressure Relief	Polypropylene	3/4"	EVB-2PP-75-UNN	261.00
	Body, Back & Pressure Relief	Polypropylene	1/2"	EVB-2PP-55-BSP	221.00
	Body, Back & Pressure Relief	Polypropylene	1/2"	EVB-2PP-55-NPT	221.00
	Body, Back & Pressure Relief	Polypropylene	1/2"	EVB-2PP-55-FLG	423.00
	Body, Back & Pressure Relief	Polypropylene	1/2"	EVB-2PP-55-SOC	221.00
	Body, Back & Pressure Relief	Polypropylene	1/2"	EVB-2PP-55-SOC-M	221.00
	Body, Back & Pressure Relief	Polypropylene	1/2"	EVB-2PP-55-UNN	227.00
	Body, Back & Pressure Relief	PVC	1"	EVB-2PVC-10-BSP	303.00
	Body, Back & Pressure Relief	PVC	1"	EVB-2PVC-10-NPT	303.00
	Body, Back & Pressure Relief	PVC	1"	EVB-2PVC-10-FLG	393.00
	Body, Back & Pressure Relief	PVC	1"	EVB-2PVC-10-SOC	303.00
	Body, Back & Pressure Relief	PVC	1"	EVB-2PVC-10-SOC-M	303.00
	Body, Back & Pressure Relief	PVC	1"	EVB-2PVC-10-UNN	316.00
	Body, Back & Pressure Relief	PVC	3/4"	EVB-2PVC-75-BSP	233.00
	Body, Back & Pressure Relief	PVC	3/4"	EVB-2PVC-75-NPT	233.00
	Body, Back & Pressure Relief	PVC	3/4"	EVB-2PVC-75-FLG	304.00
	Body, Back & Pressure Relief	PVC	3/4"	EVB-2PVC-75-SOC	233.00
	Body, Back & Pressure Relief	PVC	3/4"	EVB-2PVC-75-SOC-M	233.00
	Body, Back & Pressure Relief	PVC	3/4"	EVB-2PVC-75-UNN	253.00
	Body, Back & Pressure Relief	PVC	1/2"	EVB-2PVC-55-BSP	212.00
	Body, Back & Pressure Relief	PVC	1/2"	EVB-2PVC-55-NPT	212.00
	Body, Back & Pressure Relief	PVC	1/2"	EVB-2PVC-55-FLG	277.00
	Body, Back & Pressure Relief	PVC	1/2"	EVB-2PVC-55-SOC	212.00
	Body, Back & Pressure Relief	PVC	1/2"	EVB-2PVC-55-SOC-M	212.00
	Body, Back & Pressure Relief	PVC	1/2"	EVB-2PVC-55-UNN	234.00
	Body, Back & Pressure Relief	PVDF	1"	EVB-2PVDF-10-BSP	553.00
	Body, Back & Pressure Relief	PVDF	1"	EVB-2PVDF-10-NPT	553.00
	Body, Back & Pressure Relief	PVDF	1"	EVB-2PVDF-10-FLG	960.00
	Body, Back & Pressure Relief	PVDF	1"	EVB-2PVDF-10-SOC	553.00

Item #	Description	Material	Size	Part #	Price
	Body, Back & Pressure Relief	PVDF	1"	EVB-2PVDF-10-SOC-M	553.00
	Body, Back & Pressure Relief	PVDF	1"	EVB-2PVDF-10-UNN	593.00
	Body, Back & Pressure Relief	PVDF	3/4"	EVB-2PVDF-75-BSP	502.00
	Body, Back & Pressure Relief	PVDF	3/4"	EVB-2PVDF-75-NPT	502.00
	Body, Back & Pressure Relief	PVDF	3/4"	EVB-2PVDF-75-FLG	707.00
	Body, Back & Pressure Relief	PVDF	3/4"	EVB-2PVDF-75-SOC	4502.00
	Body, Back & Pressure Relief	PVDF	3/4"	EVB-2PVDF-75-SOC-M	502.00
	Body, Back & Pressure Relief	PVDF	3/4"	EVB-2PVDF-75-UNN	549.00
	Body, Back & Pressure Relief	PVDF	1/2"	EVB-2PVDF-55-BSP	403.00
	Body, Back & Pressure Relief	PVDF	1/2"	EVB-2PVDF-55-NPT	403.00
	Body, Back & Pressure Relief	PVDF	1/2"	EVB-2PVDF-55-FLG	647.00
	Body, Back & Pressure Relief	PVDF	1/2"	EVB-2PVDF-55-SOC	403.00
	Body, Back & Pressure Relief	PVDF	1/2"	EVB-2PVDF-55-SOC-M	403.00
	Body, Back & Pressure Relief	PVDF	1/2"	EVB-2PVDF-55-UNN	439.00
	Body, Back & Pressure Relief	Stainless Steel	1"	EVB-2SS-10-BSP	616.00
	Body, Back & Pressure Relief	Stainless Steel	1"	EVB-2SS-10-NPT	616.00
	Body, Back & Pressure Relief	Stainless Steel	1"	EVB-2SS-10-FLG	1,095.00
	Body, Back & Pressure Relief	Stainless Steel	1"	EVB-2SS-10-SOC	616.00
	Body, Back & Pressure Relief	Stainless Steel	1"	EVB-2SS-10-SOC-M	616.00
	Body, Back & Pressure Relief	Stainless Steel	3/4"	EVB-2SS-75-BSP	469.00
	Body, Back & Pressure Relief	Stainless Steel	3/4"	EVB-2SS-75-NPT	469.00
	Body, Back & Pressure Relief	Stainless Steel	3/4"	EVB-2SS-75-FLG	820.00
	Body, Back & Pressure Relief	Stainless Steel	3/4"	EVB-2SS-75-SOC	469.00
	Body, Back & Pressure Relief	Stainless Steel	3/4"	EVB-2SS-75-SOC-M	469.00
	Body, Back & Pressure Relief	Stainless Steel	1/2"	EVB-2SS-55-BSP	447.00
	Body, Back & Pressure Relief	Stainless Steel	1/2"	EVB-2SS-55-NPT	447.00
	Body, Back & Pressure Relief	Stainless Steel	1/2"	EVB-2SS-55-FLG	780.00
	Body, Back & Pressure Relief	Stainless Steel	1/2"	EVB-2SS-55-SOC	447.00
	Body, Back & Pressure Relief	Stainless Steel	1/2"	EVB-2SS-55-SOC-M	447.00
3	Diaphragm	EPDM	1/2", 3/4", 1"	EVD-3-51-E	57.00
	Diaphragm	PVC	1/2", 3/4", 1"	EVD-3-51-P	57.00
	Diaphragm	Viton	1/2", 3/4", 1"	EVD-3-51-V	57.00

Item #	Description	Material	Size	Part #	Price
	Diaphragm	PTFE/EPDM	1/2", 3/4", 1"	EVD-3-51	57.00
4	Adjusting Bolt	Stainless Steel	1/2", 3/4", 1"	EVAB-4-51	1.60
5	Spring	Stainless Steel (Nickel Plated)	1/2', 3/4' & 1"	EVS-5-51	31.00
6	Top Disc	Polypropylene	1/2', 3/4' & 1"	EVTD-6-51	4.80
7	Bottom Disc	Polypropylene	1/2', 3/4' & 1"	EVBD-7-51	6.35
8	Bolts SS (Plastic)	Stainless Steel	1/2', 3/4' & 1"	EVSB-8-51	1.85
8A	Bolts SS (Metal)	Stainless Steel	1/2', 3/4' & 1"	EVSB-8A-51	1.85
9	Lock Nut SS	Stainless Steel	1/2', 3/4' & 1"	EVBN-9-51	0.55
10	Bolt Cap Cover	Vinyl	1/2', 3/4' & 1"	EVBC-10-51	0.20
11	Gauge Port Cap	Nylon	1/2', 3/4' & 1"	EVGC-11	0.25
12	Bonnet Cap Cover	Vinyl	1/2', 3/4' & 1"	EVTC-12-B-51	0.65
	Bonnet Cap Cover	Vinyl	1/2', 3/4' & 1"	EVTC-12-R-51	0.65
	Bonnet Cap Cover	Vinyl	1/2', 3/4' & 1"	EVTC-12-Y-51	0.65
13	Union Seal O-Ring	EPDM	1/2', 3/4' & 1"	EVO-13-51-E	
	Union Seal O-Ring	PTFE Encapsulated Viton	1/2', 3/4' & 1"	EVO-13-51-T	1.05
	Union Seal O-Ring	Viton	1/2', 3/4' & 1"	EVO-13-51-V	6.35
14	Union Nut	CPVC	1/2', 3/4' & 1"	EVUN-14-CPVC-51	2.15
	Union Nut	PP	1/2', 3/4' & 1"	EVUN-14-PP-51	7.90
	Union Nut	PVC	1/2', 3/4' & 1"	EVUN-14-PVC-51	10.00
	Union Nut	PVDF	1/2', 3/4' & 1"	EVUN-14-PVDF-51	5.20
15	Union Insert	CPVC (Corzan)	1"	EVUI-15-CPVC-BSPT-10	16.00
	Union Insert	CPVC (Corzan)	1"	EVUI-15-CPVC-NPT-10	7.90
	Union Insert	CPVC (Corzan)	1"	EVUI-15-CPVC-SOC-10	7.90
	Union Insert	CPVC (Corzan)	1"	EVUI-15-CPVC-SOC-M-10	3.80
	Union Insert	CPVC (Corzan)	3/4"	EVUI-15-CPVC-BSPT-75	4.00
	Union Insert	CPVC (Corzan)	3/4"	EVUI-15-CPVC-NPT-75	7.20
	Union Insert	CPVC (Corzan)	3/4"	EVUI-15-CPVC-SOC-75	7.20
	Union Insert	CPVC (Corzan)	3/4"	EVUI-15-CPVC-SOC-M-75	3.60
	Union Insert	CPVC (Corzan)	1/2"	EVUI-15-CPVC-BSPT-55	3.60
	Union Insert	CPVC (Corzan)	1/2"	EVUI-15-CPVC-NPT-55	6.00
	Union Insert	CPVC (Corzan)	1/2"	EVUI-15-CPVC-SOC-55	6.00
	Union Insert	CPVC (Corzan)	1/2"	EVUI-15-CPVC-SOC-M-55	3.00
	Union Insert	Polypropylene	1"	EVUI-15-PP-BSPT-10	3.00
	Union Insert	Polypropylene	1"	EVUI-15-PP-NPT-10	6.20
	Union Insert	Polypropylene	1"	EVUI-15-PP-SOC-10	6.20
	Union Insert	Polypropylene	1"	EVUI-15-PP-SOC-M-10	6.00
	Union Insert	Polypropylene	3/4"	EVUI-15-PP-BSP-75	6.00
	Union Insert	Polypropylene	3/4"	EVUI-15-PP-NPT-75	5.00
	Union Insert	Polypropylene	3/4"	EVUI-15-PP-SOC-75	5.00
	Union Insert	Polypropylene	3/4"	EVUI-15-PP-SOC-M-75	5.00
	Union Insert	Polypropylene	1/2"	EVUI-15-PP-BSP-55	5.00
	Union Insert	Polypropylene	1/2"	EVUI-15-PP-NPT-55	4.00

Item #	Description	Material	Size	Part #	Price
	Union Insert	Polypropylene	1/2"	EVUI-15-PP-SOC-55	4.00
	Union Insert	Polypropylene	1/2"	EVUI-15-PP-SOC-M-55	4.00
	Union Insert	PVC	1"	EVUI-15-PVC-BSPT-10	4.00
	Union Insert	PVC	1"	EVUI-15-PVC-NPT-10	5.40
	Union Insert	PVC	1"	EVUI-15-PVC-SOC-10	5.40
	Union Insert	PVC	1"	EVUI-15-PVC-SOC-M-10	3.60
	Union Insert	PVC	3/4"	EVUI-15-PVC-BSP-75	3.60
	Union Insert	PVC	3/4"	EVUI-15-PVC-NPT-75	4.20
	Union Insert	PVC	3/4"	EVUI-15-PVC-SOC-75	4.20
	Union Insert	PVC	3/4"	EVUI-15-PVC-SOC-M-75	3.00
	Union Insert	PVC	1/2"	EVUI-15-PVC-BSP-55	3.00
	Union Insert	PVC	1/2"	EVUI-15-PVC-NPT-55	4.00
	Union Insert	PVC	1/2"	EVUI-15-PVC-SOC-55	4.00
	Union Insert	PVC	1/2"	EVUI-15-PVC-SOC-M-55	2.60
	Union Insert	PVDF	1"	EVUI-15-PVDF-BSPT-10	2.60
	Union Insert	PVDF	1"	EVUI-15-PVDF-NPT-10	20.40
	Union Insert	PVDF	1"	EVUI-15-PVDF-SOC-10	20.40
	Union Insert	PVDF	1"	EVUI-15-PVDF-SOC-M-10	16.20
	Union Insert	PVDF	3/4"	EVUI-15-PVDF-BSP-75	16.20
	Union Insert	PVDF	3/4"	EVUI-15-PVDF-NPT-75	20.00
	Union Insert	PVDF	3/4"	EVUI-15-PVDF-SOC-75	20.00
	Union Insert	PVDF	3/4"	EVUI-15-PVDF-SOC-M-75	16.00
	Union Insert	PVDF	1/2"	EVUI-15-PVDF-BSP-55	16.00
	Union Insert	PVDF	1/2"	EVUI-15-PVDF-NPT-55	16.00
	Union Insert	PVDF	1/2"	EVUI-15-PVDF-SOC-55	16.00
	Union Insert	PVDF	1/2"	EVUI-15-PVDF-SOC-M-55	12.00

Recommended Spare Parts Service Kit

CODE E

Part #	To Suit Model #	Description	Price
EV55E	ECO Valve 1/2"	EPDM Diaph. Spring, Top and Bottom Disc	98.00
EV55P	ECO Valve 1/2"	PVC Diaph., Spring, Top and Bottom Disc	98.00
EV55V	ECO Valve 1/2"	Viton Diaph., Spring, Top and Bottom Disc	98.00
EV55T	ECO Valve 1/2"	PTFE/EPDM Diaph., Spring, Top and Bottom Disc	98.00
EV75E	ECO Valve 3/4"	EPDM Diaph. Spring, Top and Bottom Disc	98.00
EV75P	ECO Valve 3/4"	PVC Diaph., Spring, Top and Bottom Disc	98.00
EV75V	ECO Valve 3/4"	Viton Diaph., Spring, Top and Bottom Disc	98.00
EV75T	ECO Valve 3/4"	PTFE/EPDM Diaph., Spring, Top and Bottom Disc	98.00
EV10E	ECO Valve 1"	EPDM Diaph. Spring, Top and Bottom Disc	98.00
EV10P	ECO Valve 1"	PVC Diaph., Spring, Top and Bottom Disc	98.00
EV10V	ECO Valve 1"	Viton Diaph., Spring, Top and Bottom Disc	98.00
EV10T	ECO Valve 1"	PTFE/EPDM Diaph., Spring, Top and Bottom Disc	98.00

Body Configuration

Back Pressure Valves (Pressure Retaining Valves)
1/2" High Flow, 3/4", 1" ECO Valves

Body Configuration Model ECO-55 Dimensions
 ECO-75
 ECO-100

Nominal Size		PVC, CPVC, PP & PVDF							
NPS Inch	DIN DN	Ø D inch mm	h inch mm	H inch mm	L inch mm	L inch mm	L inch mm	L inch mm	L inch mm
SERIES-B		Thrd Soc Flg Unin							
1/2 High Flow	15	3.50 88.9	0.88 22.4	4.80 121.9	4.85 123.2	4.85 123.2	6.93 176.0	6.96 176.8	
3/4	20	3.50 88.9	0.88 22.4	4.80 121.9	4.85 123.2	4.85 123.2	7.17 182.1	6.96 176.8	
1	25	3.50 88.9	0.88 22.4	4.80 121.9	4.85 123.2	4.85 123.2	7.48 190.0	6.96 176.8	

Nominal Size		316L SS						
NPS Inch	DIN DN	Ø D inch mm	h inch mm	H inch mm	L inch mm	L inch mm	L inch mm	L inch mm
SERIES-B		Thrd Soc Flg						
1/2 High Flow	15	3.50 88.9	0.63 16.0	4.80 121.9	3.50 88.9	3.50 88.9	7.25 184.2	
3/4	20	3.50 88.9	0.73 18.5	4.80 121.9	3.50 88.9	3.50 88.9	7.63 193.8	
1	25	3.50 88.9	0.86 21.8	5.10 129.5	3.50 88.9	3.50 88.9	7.88 200.2	

Exploded View – Back Pressure / Pressure Relief Valve

ECO-110, ECO-125, ECO-150, ECO-200

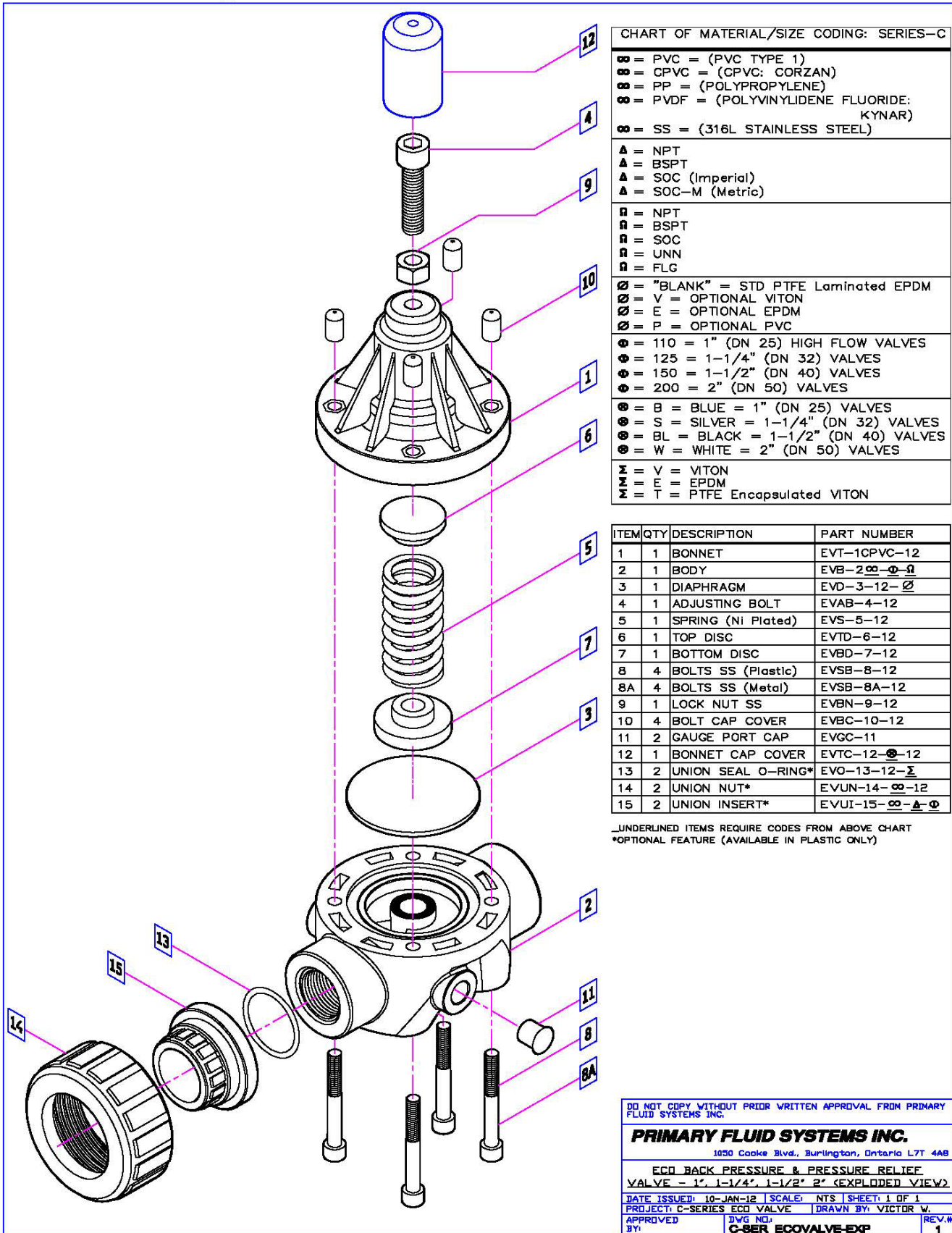


CHART OF MATERIAL/SIZE CODING: SERIES-C

- ∞ = PVC = (PVC TYPE 1)
 - ∞ = CPVC = (CPVC: CORZAN)
 - ∞ = PP = (POLYPROPYLENE)
 - ∞ = PVDF = (POLYVINYLIDENE FLUORIDE: KYNAR)
 - ∞ = SS = (316L STAINLESS STEEL)
- ▲ = NPT
 - ▲ = BSPT
 - ▲ = SOC (Imperial)
 - ▲ = SOC-M (Metric)
- = NPT
 - = BSPT
 - = SOC
 - = UNN
 - = FLG
- ∅ = "BLANK" = STD PTFE Laminated EPDM
 - ∅ = V = OPTIONAL VITON
 - ∅ = E = OPTIONAL EPDM
 - ∅ = P = OPTIONAL PVC
- ⊕ = 110 = 1" (DN 25) HIGH FLOW VALVES
 - ⊕ = 125 = 1-1/4" (DN 32) VALVES
 - ⊕ = 150 = 1-1/2" (DN 40) VALVES
 - ⊕ = 200 = 2" (DN 50) VALVES
- ⊙ = B = BLUE = 1" (DN 25) VALVES
 - ⊙ = S = SILVER = 1-1/4" (DN 32) VALVES
 - ⊙ = BL = BLACK = 1-1/2" (DN 40) VALVES
 - ⊙ = W = WHITE = 2" (DN 50) VALVES
- Σ = V = VITON
 - Σ = E = EPDM
 - Σ = T = PTFE Encapsulated VITON

ITEM	QTY	DESCRIPTION	PART NUMBER
1	1	BONNET	EVT-1CPVC-12
2	1	BODY	EVB-2∞-∅-∅
3	1	DIAPHRAGM	EVD-3-12-∅
4	1	ADJUSTING BOLT	EVAB-4-12
5	1	SPRING (Ni Plated)	EVS-5-12
6	1	TOP DISC	EVD-6-12
7	1	BOTTOM DISC	EVBD-7-12
8	4	BOLTS SS (Plastic)	EVSB-8-12
8A	4	BOLTS SS (Metal)	EVSB-8A-12
9	1	LOCK NUT SS	EVBN-9-12
10	4	BOLT CAP COVER	EVBC-10-12
11	2	GAUGE PORT CAP	EVGC-11
12	1	BONNET SEAL COVER	EVTC-12-∅-12
13	2	UNION SEAL O-RING*	EVO-13-12-Σ
14	2	UNION NUT*	EVUN-14-∞-12
15	2	UNION INSERT*	EVUI-15-∞-▲-∅

UNDERLINED ITEMS REQUIRE CODES FROM ABOVE CHART
 *OPTIONAL FEATURE (AVAILABLE IN PLASTIC ONLY)

DO NOT COPY WITHOUT PRIOR WRITTEN APPROVAL FROM PRIMARY FLUID SYSTEMS INC.

PRIMARY FLUID SYSTEMS INC.

1050 Cooke Blvd., Burlington, Ontario L7T 4A8

ECO BACK PRESSURE & PRESSURE RELIEF VALVE - 1", 1-1/4", 1-1/2", 2" (EXPLODED VIEW)

DATE ISSUED: 10-JAN-12 SCALE: NTS SHEET: 1 OF 1

PROJECT: C-SERIES ECO VALVE DRAWN BY: VICTOR W.

APPROVED BY: DWG NO: C-SER ECOVALVE-EXP REV.# 1

ECO Valve

110 (1" High Flow) – 125 (1 1/4") – 150 (1 1/2") – 200 (2")

CODE E

Item #	Description	Material	Size	Part #	Price
1	Bonnet	CPVC (Corzan)	1", 1 1/4", 1 1/2", 2"	EVT-1CPVC-12	135.00
	Bonnet	316 S/S	1", 1 1/4", 1 1/2", 2"	EVT-1SS-12	299.00
	Bonnet	Aluminum	1", 1 1/4", 1 1/2", 2"	EVT-1AL-12	146.00
2	Body, Back & Pressure Relief	CPVC (Corzan)	2"	EVB-2CPVC-200-BSP	844.00
	Body, Back & Pressure Relief	CPVC (Corzan)	2"	EVB-2CPVC-200-NPT	844.00
	Body, Back & Pressure Relief	CPVC (Corzan)	2"	EVB-2CPVC-200-FLG	1,138.00
	Body, Back & Pressure Relief	CPVC (Corzan)	2"	EVB-2CPVC-200-SOC	844.00
	Body, Back & Pressure Relief	CPVC (Corzan)	2"	EVB-2CPVC-200-SOC-M	844.00
	Body, Back & Pressure Relief	CPVC (Corzan)	2"	EVB-2CPVC-200-UNN	920.00
	Body, Back & Pressure Relief	CPVC (Corzan)	1 1/2"	EVB-2CPVC-150-BSP	500.00
	Body, Back & Pressure Relief	CPVC (Corzan)	1 1/2"	EVB-2CPVC-150-NPT	500.00
	Body, Back & Pressure Relief	CPVC (Corzan)	1 1/2"	EVB-2CPVC-150-FLG	675.00
	Body, Back & Pressure Relief	CPVC (Corzan)	1 1/2"	EVB-2CPVC-150-SOC	500.00
	Body, Back & Pressure Relief	CPVC (Corzan)	1 1/2"	EVB-2CPVC-150-SOC-M	500.00
	Body, Back & Pressure Relief	CPVC (Corzan)	1 1/2"	EVB-2CPVC-150-UNN	545.00
	Body, Back & Pressure Relief	CPVC (Corzan)	1 1/4"	EVB-2CPVC-125-BSP	465.00
	Body, Back & Pressure Relief	CPVC (Corzan)	1 1/4"	EVB-2CPVC-125-NPT	465.00
	Body, Back & Pressure Relief	CPVC (Corzan)	1 1/4"	EVB-2CPVC-125-FLG	626.00
	Body, Back & Pressure Relief	CPVC (Corzan)	1 1/4"	EVB-2CPVC-125-SOC	465.00
	Body, Back & Pressure Relief	CPVC (Corzan)	1 1/4"	EVB-2CPVC-125-SOC-M	465.00
	Body, Back & Pressure Relief	CPVC (Corzan)	1 1/4"	EVB-2CPVC-125-UNN	506.00
	Body, Back & Pressure Relief	CPVC (Corzan)	1"	EVB-2CPVC-110-BSP	349.00
	Body, Back & Pressure Relief	CPVC (Corzan)	1"	EVB-2CPVC-110-NPT	349.00
	Body, Back & Pressure Relief	CPVC (Corzan)	1"	EVB-2CPVC-110-FLG	468.00
	Body, Back & Pressure Relief	CPVC (Corzan)	1"	EVB-2CPVC-110-SOC	349.00
	Body, Back & Pressure Relief	CPVC (Corzan)	1"	EVB-2CPVC-110-SOC-M	349.00
	Body, Back & Pressure Relief	Polypropylene	2"	EVB-2PP-200-BSP	613.00
	Body, Back & Pressure Relief	Polypropylene	2"	EVB-2PP-200-NPT	613.00
	Body, Back & Pressure Relief	Polypropylene	2"	EVB-2PP-200-FLG	826.00
	Body, Back & Pressure Relief	Polypropylene	2"	EVB-2PP-200-SOC	613.00

Item #	Description	Material	Size	Part #	Price
	Body, Back & Pressure Relief	Polypropylene	2"	EVB-2PP-200-SOC-M	613.00
	Body, Back & Pressure Relief	Polypropylene	2"	EVB-2PP-200-UNN	668.00
	Body, Back & Pressure Relief	Polypropylene	1 ½"	EVB-2PP-150-BSP	476.00
	Body, Back & Pressure Relief	Polypropylene	1 ½"	EVB-2PP-150-NPT	476.00
	Body, Back & Pressure Relief	Polypropylene	1 ½"	EVB-2PP-150-FLG	639.00
	Body, Back & Pressure Relief	Polypropylene	1 ½"	EVB-2PP-150-SOC	476.00
	Body, Back & Pressure Relief	Polypropylene	1 ½"	EVB-2PP-150-SOC-M	476.00
	Body, Back & Pressure Relief	Polypropylene	1 ½"	EVB-2PP-150-UNN	516.00
	Body, Back & Pressure Relief	Polypropylene	1 ¼"	EVB-2PP-125-BSP	423.00
	Body, Back & Pressure Relief	Polypropylene	1 ¼"	EVB-2PP-125-NPT	423.00
	Body, Back & Pressure Relief	Polypropylene	1 ¼"	EVB-2PP-125-FLG	570.00
	Body, Back & Pressure Relief	Polypropylene	1 ¼"	EVB-2PP-125-SOC	423.00
	Body, Back & Pressure Relief	Polypropylene	1 ¼"	EVB-2PP-125-SOC-M	423.00
	Body, Back & Pressure Relief	Polypropylene	1 ¼"	EVB-2PP-125-UNN	462.00
	Body, Back & Pressure Relief	Polypropylene	1"	EVB-2PP-110-BSP	405.00
	Body, Back & Pressure Relief	Polypropylene	1"	EVB-2PP-110-NPT	405.00
	Body, Back & Pressure Relief	Polypropylene	1"	EVB-2PP-110-FLG	545.00
	Body, Back & Pressure Relief	Polypropylene	1"	EVB-2PP-110-SOC	405.00
	Body, Back & Pressure Relief	Polypropylene	1"	EVB-2PP-110-SOC-M	405.00
	Body, Back & Pressure Relief	Polypropylene	1"	EVB-2PP-110-UNN	442.00
	Body, Back & Pressure Relief	PVC	2"	EVB-2PVC-200-BSP	582.00
	Body, Back & Pressure Relief	PVC	2"	EVB-2PVC-200-NPT	582.00
	Body, Back & Pressure Relief	PVC	2"	EVB-2PVC-200-FLG	785.00
	Body, Back & Pressure Relief	PVC	2"	EVB-2PVC-200-SOC	582.00
	Body, Back & Pressure Relief	PVC	2"	EVB-2PVC-200-SOC-M	582.00
	Body, Back & Pressure Relief	PVC	2"	EVB-2PVC-200-UNN	635.00
	Body, Back & Pressure Relief	PVC	1 ½"	EVB-2PVC-150-BSP	448.00
	Body, Back & Pressure Relief	PVC	1 ½"	EVB-2PVC-150-NPT	448.00
	Body, Back & Pressure Relief	PVC	1 ½"	EVB-2PVC-150-FLG	605.00
	Body, Back & Pressure Relief	PVC	1 ½"	EVB-2PVC-150-SOC	448.00
	Body, Back & Pressure Relief	PVC	1 ½"	EVB-2PVC-150-SOC-M	448.00

Item #	Description	Material	Size	Part #	Price
	Body, Back & Pressure Relief	PVC	1 ½"	EVB-2PVC-150-UNN	489.00
	Body, Back & Pressure Relief	PVC	1 ¼"	EVB-2PVC-125-BSP	407.00
	Body, Back & Pressure Relief	PVC	1 ¼"	EVB-2PVC-125-NPT	407.00
	Body, Back & Pressure Relief	PVC	1 ¼"	EVB-2PVC-125-FLG	550.00
	Body, Back & Pressure Relief	PVC	1 ¼"	EVB-2PVC-125-SOC	407.00
	Body, Back & Pressure Relief	PVC	1 ¼"	EVB-2PVC-125-SOC-M	407.00
	Body, Back & Pressure Relief	PVC	1 ¼"	EVB-2PVC-125-UNN	445.00
	Body, Back & Pressure Relief	PVC	1"	EVB-2PVC-110-BSP	378.00
	Body, Back & Pressure Relief	PVC	1"	EVB-2PVC-110-NPT	378.00
	Body, Back & Pressure Relief	PVC	1"	EVB-2PVC-110-FLG	510.00
	Body, Back & Pressure Relief	PVC	1"	EVB-2PVC-110-SOC	378.00
	Body, Back & Pressure Relief	PVC	1"	EVB-2PVC-110-SOC-M	378.00
	Body, Back & Pressure Relief	PVC	1"	EVB-2PVC-110-UNN	413.00
	Body, Back & Pressure Relief	PVDF	2"	EVB-2PVDF-200-BSP	1,796.00
	Body, Back & Pressure Relief	PVDF	2"	EVB-2PVDF-200-NPT	1,796.00
	Body, Back & Pressure Relief	PVDF	2"	EVB-2PVDF-200-FLG	2,425.00
	Body, Back & Pressure Relief	PVDF	2"	EVB-2PVDF-200-SOC	1,796.00
	Body, Back & Pressure Relief	PVDF	2"	EVB-2PVDF-200-SOC-M	1,796.00
	Body, Back & Pressure Relief	PVDF	2"	EVB-2PVDF-200-UNN	1,958.00
	Body, Back & Pressure Relief	PVDF	1 ½"	EVB-2PVDF-150-BSP	1,029.00
	Body, Back & Pressure Relief	PVDF	1 ½"	EVB-2PVDF-150-NPT	1,029.00
	Body, Back & Pressure Relief	PVDF	1 ½"	EVB-2PVDF-150-FLG	1,388.00
	Body, Back & Pressure Relief	PVDF	1 ½"	EVB-2PVDF-150-SOC	1,029.00
	Body, Back & Pressure Relief	PVDF	1 ½"	EVB-2PVDF-150-SOC-M	1,029.00
	Body, Back & Pressure Relief	PVDF	1 ½"	EVB-2PVDF-150-UNN	1,122.00
	Body, Back & Pressure Relief	PVDF	1 ¼"	EVB-2PVDF-125-BSP	938.00
	Body, Back & Pressure Relief	PVDF	1 ¼"	EVB-2PVDF-125-NPT	938.00
	Body, Back & Pressure Relief	PVDF	1 ¼"	EVB-2PVDF-125-FLG	1,264.00
	Body, Back & Pressure Relief	PVDF	1 ¼"	EVB-2PVDF-125-SOC	938.00
	Body, Back & Pressure Relief	PVDF	1 ¼"	EVB-2PVDF-125-SOC-M	938.00
	Body, Back & Pressure Relief	PVDF	1 ¼"	EVB-2PVDF-125-UNN	1,023.00

Item #	Description	Material	Size	Part #	Price
	Body, Back & Pressure Relief	PVDF	1"	EVB-2PVDF-110-BSP	888.00
	Body, Back & Pressure Relief	PVDF	1"	EVB-2PVDF-110-NPT	888.00
	Body, Back & Pressure Relief	PVDF	1"	EVB-2PVDF-110-FLG	1,198.00
	Body, Back & Pressure Relief	PVDF	1"	EVB-2PVDF-110-SOC	888.00
	Body, Back & Pressure Relief	PVDF	1"	EVB-2PVDF-110-SOC-M	888.00
	Body, Back & Pressure Relief	PVDF	1"	EVB-2PVDF-110-UNN	969.00
	Body, Back & Pressure Relief	Stainless Steel	2"	EVB-2SS-200-BSP	1,876.00
	Body, Back & Pressure Relief	Stainless Steel	2"	EVB-2SS-200-NPT	1,876.00
	Body, Back & Pressure Relief	Stainless Steel	2"	EVB-2SS-200-FLG	2,630.00
	Body, Back & Pressure Relief	Stainless Steel	2"	EVB-2SS-200-SOC	1,876.00
	Body, Back & Pressure Relief	Stainless Steel	2"	EVB-2SS-200-SOC-M	1,876.00
	Body, Back & Pressure Relief	Stainless Steel	1 1/2"	EVB-2SS-150-BSP	1,225.00
	Body, Back & Pressure Relief	Stainless Steel	1 1/2"	EVB-2SS-150-NPT	1,225.00
	Body, Back & Pressure Relief	Stainless Steel	1 1/2"	EVB-2SS-150-FLG	1,900.00
	Body, Back & Pressure Relief	Stainless Steel	1 1/2"	EVB-2SS-150-SOC	1,225.00
	Body, Back & Pressure Relief	Stainless Steel	1 1/2"	EVB-2SS-150-SOC-M	1,225.00
	Body, Back & Pressure Relief	Stainless Steel	1 1/4"	EVB-2SS-125-BSP	1,111.00
	Body, Back & Pressure Relief	Stainless Steel	1 1/4"	EVB-2SS-125-NPT	1,111.00
	Body, Back & Pressure Relief	Stainless Steel	1 1/4"	EVB-2SS-125-FLG	1,599.00
	Body, Back & Pressure Relief	Stainless Steel	1 1/4"	EVB-2SS-125-SOC	1,111.00
	Body, Back & Pressure Relief	Stainless Steel	1 1/4"	EVB-2SS-125-SOC-M	1,111.00
	Body, Back & Pressure Relief	Stainless Steel	1"	EVB-2SS-110-BSP	1,055.00
	Body, Back & Pressure Relief	Stainless Steel	1"	EVB-2SS-110-NPT	1,055.00
	Body, Back & Pressure Relief	Stainless Steel	1"	EVB-2SS-110-FLG	1,525.00
	Body, Back & Pressure Relief	Stainless Steel	1"	EVB-2SS-110-SOC	1,055.00
	Body, Back & Pressure Relief	Stainless Steel	1"	EVB-2SS-110-SOC-M	1,055.00
3	Diaphragm	EPDM	1", 1 1/4", 1 1/2", 2"	EVD-3-12-E	72.00
	Diaphragm	PVC	1", 1 1/4", 1 1/2", 2"	EVD-3-12-P	72.00
	Diaphragm	Viton	1", 1 1/4", 1 1/2", 2"	EVD-3-12-V	72.00
	Diaphragm	PTFE/EPDM	1", 1 1/4", 1 1/2", 2"	EVD-3-12	72.00
4	Adjusting Bolt	Stainless Steel	1", 1 1/4", 1 1/2", 2"	EVAB-4-12	2.00
5	Spring	Stainless Steel (Nickel Plated)	1", 1 1/4", 1 1/2", 2"	EVS-5-12	38.00
6	Top Disc	Polypropylene	1", 1 1/4", 1 1/2", 2"	EVTD-6-12	5.00

Item #	Description	Material	Size	Part #	Price
7	Bottom Disc	Polypropylene	1", 1 1/4", 1 1/2", 2"	EVBD-7-12	6.50
8	Bolts SS (Plastic)	Stainless Steel	1", 1 1/4", 1 1/2", 2"	EVSB-8-12	4.00
8A	Bolts SS (Metal)	Stainless Steel	1", 1 1/4", 1 1/2", 2"	EVSB-8A-12	4.00
9	Lock Nut SS	Stainless Steel	1", 1 1/4", 1 1/2", 2"	EVBN-9-12	0.75
10	Bolt Cap Cover	Vinyl	1", 1 1/4", 1 1/2", 2"	EVBC-10-12	0.20
11	Gauge Port Cap	Nylon	1", 1 1/4", 1 1/2", 2"	EVGC-11	0.20
12	Bonnet Cap Cover	Vinyl	1", 1 1/4", 1 1/2", 2"	EVTC-12-B-12	0.70
	Bonnet Cap Cover	Vinyl	1", 1 1/4", 1 1/2", 2"	EVTC-12-R-12	0.70
	Bonnet Cap Cover	Vinyl	1", 1 1/4", 1 1/2", 2"	EVTC-12-Y-12	0.70
13	Union Seal O-Ring	EPDM	1", 1 1/4", 1 1/2", 2"	EVO-13-12-E	2.00
	Union Seal O-Ring	PTFE Encapsulated Viton	1", 1 1/4", 1 1/2", 2"	EVO-13-12-T	16.00
	Union Seal O-Ring	Viton	1", 1 1/4", 1 1/2", 2"	EVO-13-12-V	8.00
14	Union Nut	CPVC	1", 1 1/4", 1 1/2", 2"	EVUN-14-CPVC-12	17.00
	Union Nut	PP	1", 1 1/4", 1 1/2", 2"	EVUN-14-PP-12	20.00
	Union Nut	PVC	1", 1 1/4", 1 1/2", 2"	EVUN-14-PVC-12	13.00
	Union Nut	PVDF	1", 1 1/4", 1 1/2", 2"	EVUN-14-PVDF-12	45.00
15	Union Insert	CPVC (Corzan)	2"	EVUI-15-CPVC-BSPT-200	52.00
	Union Insert	CPVC (Corzan)	2"	EVUI-15-CPVC-NPT-200	52.00
	Union Insert	CPVC (Corzan)	2"	EVUI-15-CPVC-SOC-200	52.00
	Union Insert	CPVC (Corzan)	2"	EVUI-15-CPVC-SOC-M-200	52.00
	Union Insert	CPVC (Corzan)	1 1/2"	EVUI-15-CPVC-BSPT-150	48.00
	Union Insert	CPVC (Corzan)	1 1/2"	EVUI-15-CPVC-NPT-150	48.00
	Union Insert	CPVC (Corzan)	1 1/2"	EVUI-15-CPVC-SOC-150	48.00
	Union Insert	CPVC (Corzan)	1 1/2"	EVUI-15-CPVC-SOC-M-150	48.00
	Union Insert	CPVC (Corzan)	1 1/4"	EVUI-15-CPVC-BSPT-125	44.00
	Union Insert	CPVC (Corzan)	1 1/4"	EVUI-15-CPVC-NPT-125	44.00
	Union Insert	CPVC (Corzan)	1 1/4"	EVUI-15-CPVC-SOC-125	44.00
	Union Insert	CPVC (Corzan)	1 1/4"	EVUI-15-CPVC-SOC-M-125	44.00
	Union Insert	CPVC (Corzan)	1"	EVUI-15-CPVC-BSPT-110	42.00
	Union Insert	CPVC (Corzan)	1"	EVUI-15-CPVC-NPT-110	42.00
	Union Insert	CPVC (Corzan)	1"	EVUI-15-CPVC-SOC-110	42.00
	Union Insert	CPVC (Corzan)	1"	EVUI-15-CPVC-SOC-M-110	42.00
	Union Insert	Polypropylene	2"	EVUI-15-PP-BSPT-200	50.00
	Union Insert	Polypropylene	2"	EVUI-15-PP-NPT-200	50.00
	Union Insert	Polypropylene	2"	EVUI-15-PP-SOC-200	50.00
	Union Insert	Polypropylene	2"	EVUI-15-PP-SOC-M-200	50.00
	Union Insert	Polypropylene	1 1/2"	EVUI-15-PP-BSP-150	48.00
	Union Insert	Polypropylene	1 1/2"	EVUI-15-PP-NPT-150	48.00
	Union Insert	Polypropylene	1 1/2"	EVUI-15-PP-SOC-150	48.00
	Union Insert	Polypropylene	1 1/2"	EVUI-15-PP-SOC-M-150	48.00
	Union Insert	Polypropylene	1 1/4"	EVUI-15-PP-BSP-125	45.00
	Union Insert	Polypropylene	1 1/4"	EVUI-15-PP-NPT-125	45.00

Item #	Description	Material	Size	Part #	Price
	Union Insert	Polypropylene	1 ¼"	EVUI-15-PP-SOC-125	45.00
	Union Insert	Polypropylene	1 ¼"	EVUI-15-PP-SOC-M-125	45.00
	Union Insert	Polypropylene	1"	EVUI-15-PP-BSP-110	43.00
	Union Insert	Polypropylene	1"	EVUI-15-PP-NPT-110	43.00
	Union Insert	Polypropylene	1"	EVUI-15-PP-SOC-110	43.00
	Union Insert	Polypropylene	1"	EVUI-15-PP-SOC-M-110	43.00
	Union Insert	PVC	2"	EVUI-15-PVC-BSPT-200	40.00
	Union Insert	PVC	2"	EVUI-15-PVC-NPT-200	40.00
	Union Insert	PVC	2"	EVUI-15-PVC-SOC-200	40.00
	Union Insert	PVC	2"	EVUI-15-PVC-SOC-M-200	40.00
	Union Insert	PVC	1 ½"	EVUI-15-PVC-BSP-150	33.00
	Union Insert	PVC	1 ½"	EVUI-15-PVC-NPT-150	33.00
	Union Insert	PVC	1 ½"	EVUI-15-PVC-SOC-150	33.00
	Union Insert	PVC	1 ½"	EVUI-15-PVC-SOC-M-150	33.00
	Union Insert	PVC	1 ¼"	EVUI-15-PVC-BSP-125	30.00
	Union Insert	PVC	1 ¼"	EVUI-15-PVC-NPT-125	30.00
	Union Insert	PVC	1 ¼"	EVUI-15-PVC-SOC-125	30.00
	Union Insert	PVC	1 ¼"	EVUI-15-PVC-SOC-M-125	30.00
	Union Insert	PVC	1"	EVUI-15-PVC-BSP-110	28.00
	Union Insert	PVC	1"	EVUI-15-PVC-NPT-110	28.00
	Union Insert	PVC	1"	EVUI-15-PVC-SOC-110	28.00
	Union Insert	PVC	1"	EVUI-15-PVC-SOC-M-110	28.00
	Union Insert	PVDF	2"	EVUI-15-PVDF-BSPT-200	68.00
	Union Insert	PVDF	2"	EVUI-15-PVDF-NPT-200	68.00
	Union Insert	PVDF	2"	EVUI-15-PVDF-SOC-200	68.00
	Union Insert	PVDF	2"	EVUI-15-PVDF-SOC-M-200	68.00
	Union Insert	PVDF	1 ½"	EVUI-15-PVDF-BSP-150	62.00
	Union Insert	PVDF	1 ½"	EVUI-15-PVDF-NPT-150	62.00
	Union Insert	PVDF	1 ½"	EVUI-15-PVDF-SOC-150	62.00
	Union Insert	PVDF	1 ½"	EVUI-15-PVDF-SOC-M-150	62.00
	Union Insert	PVDF	1 ¼"	EVUI-15-PVDF-BSP-125	60.00
	Union Insert	PVDF	1 ¼"	EVUI-15-PVDF-NPT-125	60.00
	Union Insert	PVDF	1 ¼"	EVUI-15-PVDF-SOC-125	60.00
	Union Insert	PVDF	1 ¼"	EVUI-15-PVDF-SOC-M-125	60.00
	Union Insert	PVDF	1"	EVUI-15-PVDF-BSP-110	58.00
	Union Insert	PVDF	1"	EVUI-15-PVDF-NPT-110	58.00
	Union Insert	PVDF	1"	EVUI-15-PVDF-SOC-110	58.00
	Union Insert	PVDF	1"	EVUI-15-PVDF-SOC-M-110	58.00

Recommended Spare Parts Service Kit

CODE E

Part #	To Suit Model #	Description	Price
EV110E	ECO Valve 1"	EPDM Diaph. Spring, Top and Bottom Disc	121.50
EV110P	ECO Valve 1"	PVC Diaph., Spring, Top and Bottom Disc	121.50
EV110V	ECO Valve 1"	Viton Diaph., Spring, Top and Bottom Disc	121.50
EV110T	ECO Valve 1"	PTFE/EPDM Diaph., Spring, Top and Bottom Disc	121.50
EV125E	ECO Valve 1 1/4"	EPDM Diaph. Spring, Top and Bottom Disc	121.50
EV125P	ECO Valve 1 1/4"	PVC Diaph., Spring, Top and Bottom Disc	121.50
EV125V	ECO Valve 1 1/4"	Viton Diaph., Spring, Top and Bottom Disc	121.50
EV125T	ECO Valve 1 1/4"	PTFE/EPDM Diaph., Spring, Top and Bottom Disc	121.50
EV150E	ECO Valve 1 1/2"	EPDM Diaph. Spring, Top and Bottom Disc	121.50
EV150P	ECO Valve 1 1/2"	PVC Diaph., Spring, Top and Bottom Disc	121.50
EV150V	ECO Valve 1 1/2"	Viton Diaph., Spring, Top and Bottom Disc	121.50
EV150T	ECO Valve 1 1/2"	PTFE/EPDM Diaph., Spring, Top and Bottom Disc	121.50
EV200E	ECO Valve 2"	EPDM Diaph. Spring, Top and Bottom Disc	121.50
EV200P	ECO Valve 2"	PVC Diaph., Spring, Top and Bottom Disc	121.50
EV200V	ECO Valve 2"	Viton Diaph., Spring, Top and Bottom Disc	121.50
EV200T	ECO Valve 2"	PTFE/EPDM Diaph., Spring, Top and Bottom Disc	121.50

Body Configuration

