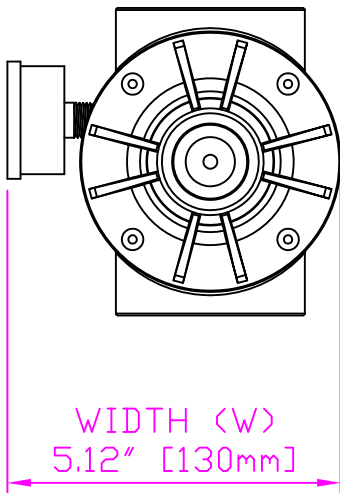
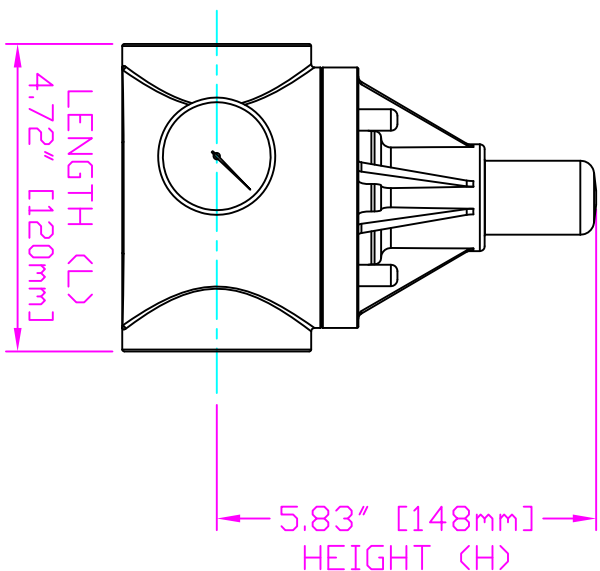


THIS DRAWING IS THE PROPERTY OF PRIMARY FLUID SYSTEMS INC. FROM WHICH A WRITTEN CONSENT FOR APPROVAL SHALL BE REQUIRED PRIOR TO COPYING.

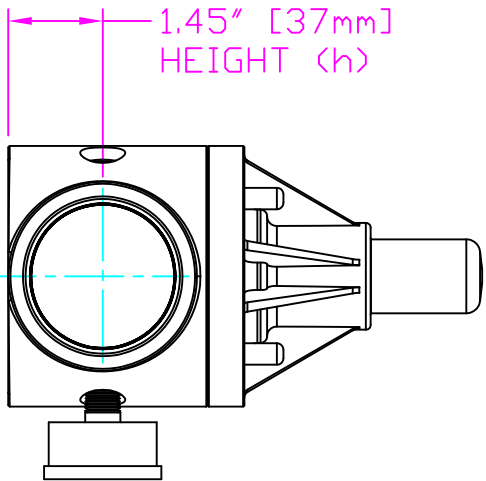
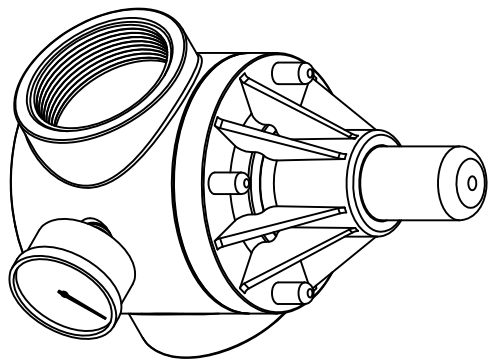


WIDTH (W)
5.12" [130mm]



LENGTH (L)
4.72" [120mm]

HEIGHT (H)
5.83" [148mm]



HEIGHT (h)
1.45" [37mm]

THIS DRAWING WITH DIMENSIONS
APPLY TO FOLLOWING MODELS:

- ECD-2004-SS-T-GAUGE
- ECD-2004-ALL20-T-GAUGE
- ECD-2004-HAST-T-GAUGE
- ECD-2003-SS-T-GAUGE
- ECD-2003-ALL20-T-GAUGE
- ECD-2003-HAST-T-GAUGE

PRIMARY FLUID SYSTEMS INC.

1050 Cooke Blvd., Burlington, Ontario L7T 4A8

TITLE
2" THREADED
ECD VALVE
WITH GAUGE

DWG TYPE: PLANAR VIEW 2D

PROJECT: C-SERIES ECD
DATE ISSUED: 13-DEC-11
DWG NO.: ECO-200A-SS-T-GAUGE-2D
SCALE: 1:3
UNITS: INCHES

PROJECT C-SERIES ECD
SHIT 1 OF 1
DRAWN BY: VICTOR W. L.

MATERIAL: METALLIC
APPROVED BY:

REV#: 0
DIMENSIONAL TOLERANCE: XXX = ± 0.25"
SHEET SIZE: 8.5 X 11
SIZE: A

