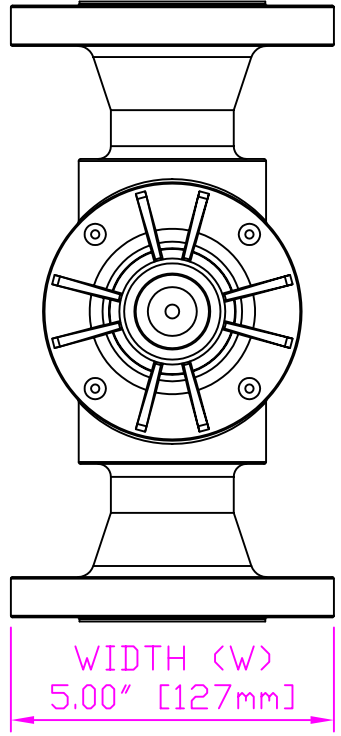
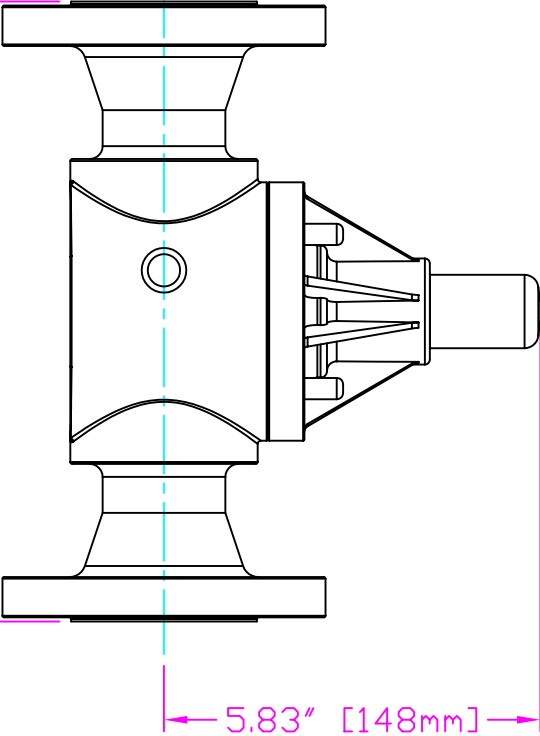


THIS DRAWING IS THE PROPERTY OF PRIMARY FLUID SYSTEMS INC. FROM WHICH A WRITTEN CONSENT FOR APPROVAL SHALL BE REQUIRED PRIOR TO COPYING.

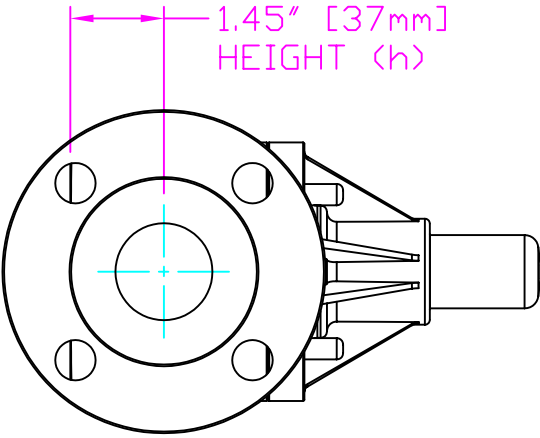
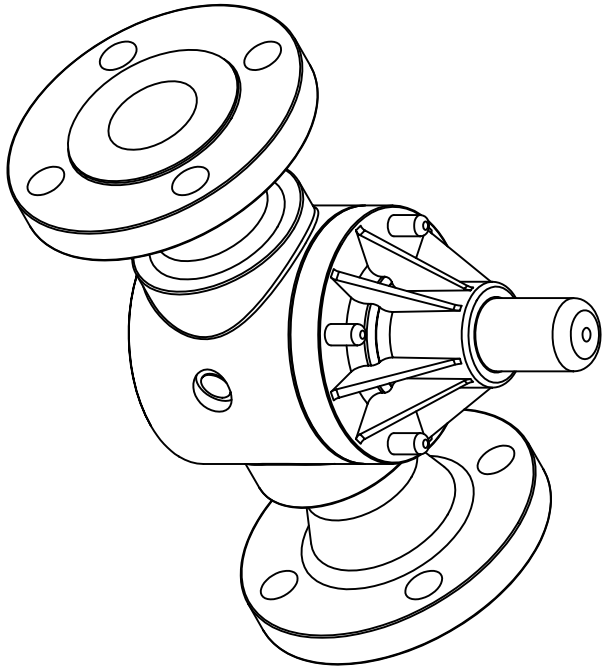


WIDTH (W)
5.00" [127mm]



LENGTH (L)
9.60" [244mm]

HEIGHT (H)
5.83" [148mm]



HEIGHT (h)
1.45" [37mm]

THIS DRAWING WITH DIMENSIONS
APPLY TO FOLLOWING MODELS:

- ECD-150E-SS-T
- ECD-150E-ALL20-T
- ECD-150E-HAST-T
- ECD-150F-SS-T
- ECD-150F-ALL20-T
- ECD-150F-HAST-T

PRIMARY FLUID SYSTEMS INC.

1050 Cooke Blvd, Burlington, Ontario L7T 4A8

1 1/2" (DN 40) FLANGED
ECD VALVE

PROJECT: C-SERIES ECD		SHT: 1 OF 1		DRAWN BY: VICTOR VL	
DATE ISSUED: 13-DEC-11		SCALE: 1:3		UNITS: INCHES	
DVG: NDI		REV: #		0	
ECO-150E-SS-T-2D		MATERIAL: METALLIC		DIMENSIONAL TOLERANCE XXX = ± 0.25"	
APPROVED BY:		HARD ANGLE PROJECTION		SHEET: 05 X 11	
DVG TYPE: PLANAR VIEW, 2D		HARD ANGLE PROJECTION		SIZE: A	