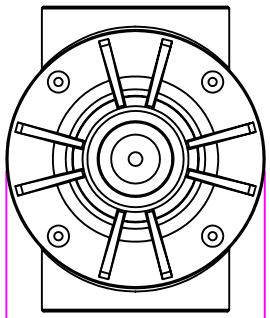
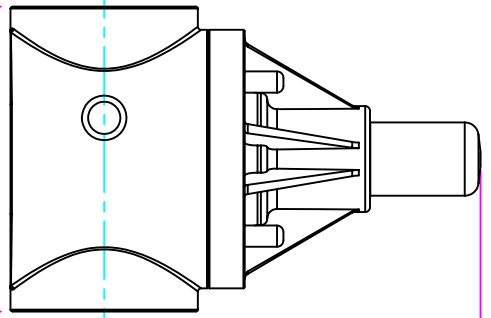
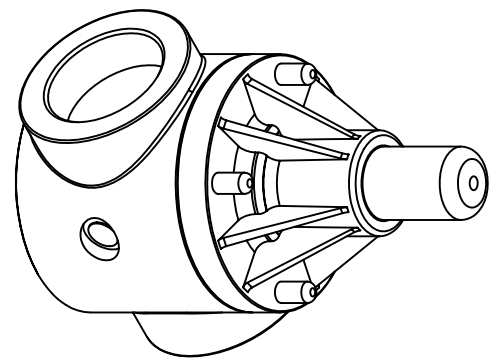


THIS DRAWING IS THE PROPERTY OF PRIMARY FLUID SYSTEMS INC. FROM WHICH A WRITTEN CONSENT FOR APPROVAL SHALL BE REQUIRED PRIOR TO COPYING.

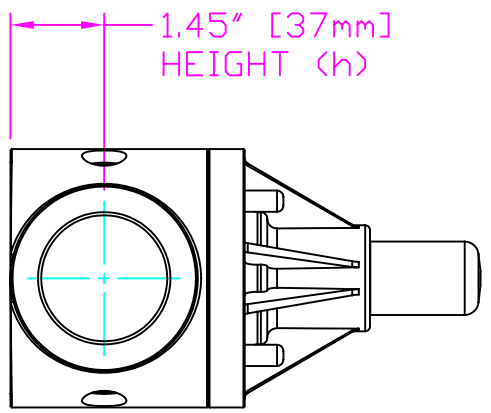


WIDTH (W)
4.00" [102mm]



LENGTH (L)
4.72" [120mm]

5.83" [148mm]
HEIGHT (H)



1.45" [37mm]
HEIGHT (h)


THIS DRAWING WITH DIMENSIONS
APPLY TO FOLLOWING MODELS:

- ECD-150C-SS-T
- ECD-150C-ALL20-T
- ECD-150C-HAST-T
- ECD-150D-SS-T
- ECD-150D-ALL20-T
- ECD-150D-HAST-T

PRIMARY FLUID SYSTEMS INC.

1050 Cooke Blvd., Burlington, Ontario L7T 4A8

1 1/2" (DN 40) SOCKETED
ECD VALVE

PROJECT: C-SERIES ECD		SHT: 1 OF 1		DRAWN BY: VICTOR V.L.	
DATE ISSUED: 13-DEC-11		SCALE: 1:3		UNITS: INCHES	
DVG NDL		REV: #		0	
ECCO-150C-SS-T-2D		DIMENSIONAL TOLERANCE		XXX = ± 0.25"	
MATERIAL: METALLIC		APPROVED BY:			
DVG TYPE: PLANNAR VIEW, 2D		SHEET		9.5 X 11	
		SIZE:		A	