

ECO Valve US Parts

Pricing Catalogue 2025

(Includes Recommended Spare Parts - Service Kits)

As Manufactured By:



PRIMARY FLUID SYSTEMS INC. Tel: (905) 333-8743
Fax: (905) 333-8746
North America Toll Free – 1-866-324-6422

E-Mail: sales@ecovalve.com
<http://www.eco-valve.com/>

INDEX

SERIES "A" EXPLODED VIEW – BACK PRESSURE / PRESSURE RELIEF VALVE	3
25 (1/4") – 38 (3/8") – 50 (1/2")	4
RECOMMENDED SPARE PARTS	9
SERVICE KIT	9
BODY CONFIGURATION	9
SERIES "B" EXPLODED VIEW – BACK PRESSURE / PRESSURE RELIEF VALVE	10
55 (1/2" HIGH FLOW) – 75 (3/4") – 100 (1")	11
RECOMMENDED SPARE PARTS	16
SERVICE KIT	16
BODY CONFIGURATION	16
EXPLODED VIEW – BACK PRESSURE / PRESSURE RELIEF VALVE	17
110 (1" HIGH FLOW) – 125 (1 1/4") – 150 (1 1/2") – 200 (2")	18
RECOMMENDED SPARE PARTS	24
SERVICE KIT	24
BODY CONFIGURATION	24

Series "A" Exploded View – Back Pressure / Pressure Relief Valve 1/4" (ECO-25), 3/8" (ECO-38), 1/2" (ECO-50) ECO Valves

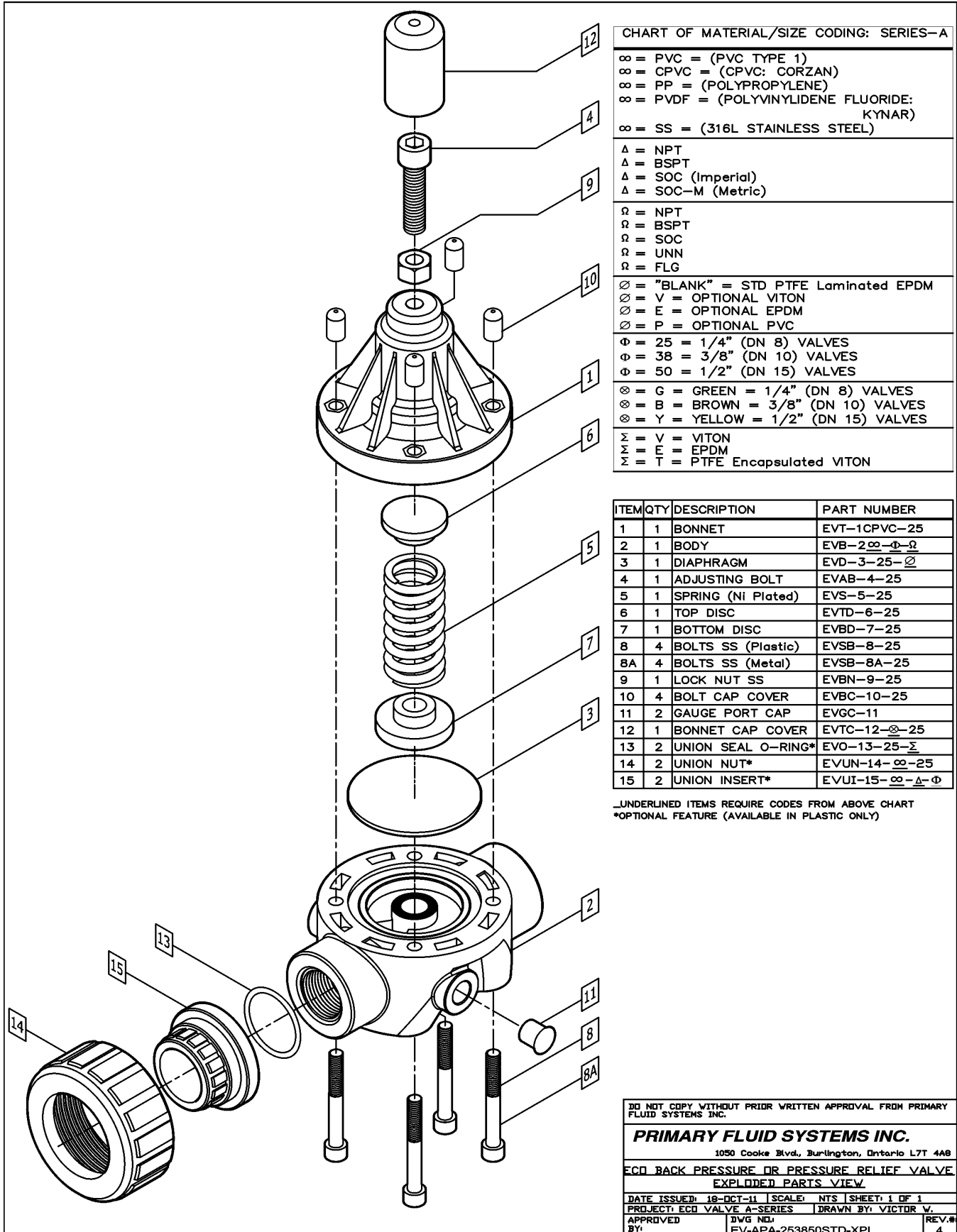


CHART OF MATERIAL/SIZE CODING: SERIES-A

∞ = PVC = (PVC TYPE 1)
∞ = CPVC = (CPVC: CORZAN)
∞ = PP = (POLYPROPYLENE)
∞ = PVDF = (POLYVINYLIDENE FLUORIDE: KYNAR)
∞ = SS = (316L STAINLESS STEEL)
Δ = NPT
Δ = BSPT
Δ = SOC (Imperial)
Δ = SOC-M (Metric)
Ω = NPT
Ω = BSPT
Ω = SOC
Ω = UNN
Ω = FLG
∅ = "BLANK" = STD PTFE Laminated EPDM
∅ = V = OPTIONAL VITON
∅ = E = OPTIONAL EPDM
∅ = P = OPTIONAL PVC
Φ = 25 = 1/4" (DN 8) VALVES
Φ = 38 = 3/8" (DN 10) VALVES
Φ = 50 = 1/2" (DN 15) VALVES
⊗ = G = GREEN = 1/4" (DN 8) VALVES
⊗ = B = BROWN = 3/8" (DN 10) VALVES
⊗ = Y = YELLOW = 1/2" (DN 15) VALVES
Σ = V = VITON
Σ = E = EPDM
Σ = T = PTFE Encapsulated VITON

ITEM	QTY	DESCRIPTION	PART NUMBER
1	1	BONNET	EVT-1CPVC-25
2	1	BODY	EVB-2∞-Φ-Ω
3	1	DIAPHRAGM	EVD-3-25-∅
4	1	ADJUSTING BOLT	EVAB-4-25
5	1	SPRING (Ni Plated)	EVS-5-25
6	1	TOP DISC	EVD-6-25
7	1	BOTTOM DISC	EVBD-7-25
8	4	BOLTS SS (Plastic)	EVSB-8-25
8A	4	BOLTS SS (Metal)	EVSB-8A-25
9	1	LOCK NUT SS	EVBN-9-25
10	4	BOLT CAP COVER	EVBC-10-25
11	2	GAUGE PORT CAP	EVGC-11
12	1	BONNET CAP COVER	EVTC-12-∅-25
13	2	UNION SEAL O-RING*	EVO-13-25-Σ
14	2	UNION NUT*	EVUN-14-∞-25
15	2	UNION INSERT*	EVUI-15-∞-Δ-Φ

UNDERLINED ITEMS REQUIRE CODES FROM ABOVE CHART
*OPTIONAL FEATURE (AVAILABLE IN PLASTIC ONLY)

DO NOT COPY WITHOUT PRIOR WRITTEN APPROVAL FROM PRIMARY FLUID SYSTEMS INC.

PRIMARY FLUID SYSTEMS INC.
1050 Cooke Blvd., Burlington, Ontario L7T 4A8

**ECO BACK PRESSURE OR PRESSURE RELIEF VALVE
EXPLODED PARTS VIEW**

DATE ISSUED: 18-OCT-11 | SCALE: NTS | SHEET: 1 OF 1
PROJECT: ECO VALVE A-SERIES | DRAWN BY: VICTOR V.
APPROVED BY: | DWG NO: EV-APA-253850STD-XPL | REV.#: 4

ECO Valve

25 (1/4") – 38 (3/8") – 50 (1/2")

CODE E

Item #	Description	Material	Size	Part #	Price
1	Bonnet	CPVC (Corzan)	1/4", 3/8", 1/2"	EVT-1CPVC-25	112.00
	Bonnet	316 S/S	1/4", 3/8", 1/2"	EVT-1SS-25	251.00
	Bonnet	Aluminum	1/4", 3/8", 1/2"	EVT-1AL-25	102.00
2	Body, Back & Pressure Relief	CPVC (Corzan)	1/2"	EVB-2CPVC-50-BSPT	288.00
	Body, Back & Pressure Relief	CPVC (Corzan)	1/2"	EVB-2CPVC-50-NPT	288.00
	Body, Back & Pressure Relief	CPVC (Corzan)	1/2"	EVB-2CPVC-50-FLG	442.00
	Body, Back & Pressure Relief	CPVC (Corzan)	1/2"	EVB-2CPVC-50-SOC	288.00
	Body, Back & Pressure Relief	CPVC (Corzan)	1/2"	EVB-2CPVC-50-SOC-M	288.00
	Body, Back & Pressure Relief	CPVC (Corzan)	1/2"	EVB-2CPVC-50-UNN	390.00
	Body, Back & Pressure Relief	CPVC (Corzan)	3/8"	EVB-2CPVC-38-BSPT	241.00
	Body, Back & Pressure Relief	CPVC (Corzan)	3/8"	EVB-2CPVC-38-NPT	241.00
	Body, Back & Pressure Relief	CPVC (Corzan)	3/8"	EVB-2CPVC-38-SOC	241.00
	Body, Back & Pressure Relief	CPVC (Corzan)	3/8"	EVB-2CPVC-38-SOC-M	241.00
	Body, Back & Pressure Relief	CPVC (Corzan)	3/8"	EVB-2CPVC-38-UNN	262.00
	Body, Back & Pressure Relief	CPVC (Corzan)	1/4"	EVB-2CPVC-25-BSPT	228.00
	Body, Back & Pressure Relief	CPVC (Corzan)	1/4"	EVB-2CPVC-25-NPT	228.00
	Body, Back & Pressure Relief	CPVC (Corzan)	1/4"	EVB-2CPVC-25-SOC	228.00
	Body, Back & Pressure Relief	CPVC (Corzan)	1/4"	EVB-2CPVC-25-SOC-M	228.00
	Body, Back & Pressure Relief	CPVC (Corzan)	1/4"	EVB-2CPVC-25-UNN	250.00
	Body, Back & Pressure Relief	Polypropylene	1/2"	EVB-2PP-50-BSPT	254.00
	Body, Back & Pressure Relief	Polypropylene	1/2"	EVB-2PP-50-NPT	254.00
	Body, Back & Pressure Relief	Polypropylene	1/2"	EVB-2PP-50-FLG	421.00
	Body, Back & Pressure Relief	Polypropylene	1/2"	EVB-2PP-50-SOC	254.00
	Body, Back & Pressure Relief	Polypropylene	1/2"	EVB-2PP-50-SOC-M	254.00
	Body, Back & Pressure Relief	Polypropylene	1/2"	EVB-2PP-50-UNN	287.00
	Body, Back & Pressure Relief	Polypropylene	3/8"	EVB-2PP-38-BSPT	208.00
	Body, Back & Pressure Relief	Polypropylene	3/8"	EVB-2PP-38-NPT	208.00
	Body, Back & Pressure Relief	Polypropylene	3/8"	EVB-2PP-38-SOC	208.00
	Body, Back & Pressure Relief	Polypropylene	3/8"	EVB-2PP-38-SOC-M	208.00
	Body, Back & Pressure Relief	Polypropylene	3/8"	EVB-2PP-38-UNN	220.00

Item #	Description	Material	Size	Part #	Price
	Body, Back & Pressure Relief	Polypropylene	1/4"	EVB-2PP-25-BSPT	186.00
	Body, Back & Pressure Relief	Polypropylene	1/4"	EVB-2PP-25-NPT	186.00
	Body, Back & Pressure Relief	Polypropylene	1/4"	EVB-2PP-25-SOC	186.00
	Body, Back & Pressure Relief	Polypropylene	1/4"	EVB-2PP-25-SOC-M	186.00
	Body, Back & Pressure Relief	Polypropylene	1/4"	EVB-2PP-25-UNN	199.00
	Body, Back & Pressure Relief	PVC	1/2"	EVB-2PVC-50-BSPT	224.00
	Body, Back & Pressure Relief	PVC	1/2"	EVB-2PVC-50-NPT	224.00
	Body, Back & Pressure Relief	PVC	1/2"	EVB-2PVC-50-FLG	334.00
	Body, Back & Pressure Relief	PVC	1/2"	EVB-2PVC-50-SOC	224.00
	Body, Back & Pressure Relief	PVC	1/2"	EVB-2PVC-50-SOC-M	224.00
	Body, Back & Pressure Relief	PVC	1/2"	EVB-2PVC-50-UNN	266.00
	Body, Back & Pressure Relief	PVC	3/8"	EVB-2PVC-38-BSPT	200.00
	Body, Back & Pressure Relief	PVC	3/8"	EVB-2PVC-38-NPT	200.00
	Body, Back & Pressure Relief	PVC	3/8"	EVB-2PVC-38-SOC	200.00
	Body, Back & Pressure Relief	PVC	3/8"	EVB-2PVC-38-SOC-M	200.00
	Body, Back & Pressure Relief	PVC	3/8"	EVB-2PVC-38-UNN	214.00
	Body, Back & Pressure Relief	PVC	1/4"	EVB-2PVC-25-BSPT	181.00
	Body, Back & Pressure Relief	PVC	1/4"	EVB-2PVC-25-NPT	181.00
	Body, Back & Pressure Relief	PVC	1/4"	EVB-2PVC-25-SOC	181.00
	Body, Back & Pressure Relief	PVC	1/4"	EVB-2PVC-25-SOC-M	181.00
	Body, Back & Pressure Relief	PVC	1/4"	EVB-2PVC-25-UNN	196.00
	Body, Back & Pressure Relief	PVDF	1/2"	EVB-2PVDF-50-BPST	468.00
	Body, Back & Pressure Relief	PVDF	1/2"	EVB-2PVDF-50-NPT	468.00
	Body, Back & Pressure Relief	PVDF	1/2"	EVB-2PVDF-50-FLG	777.00
	Body, Back & Pressure Relief	PVDF	1/2"	EVB-2PVDF-50-SOC	468.00
	Body, Back & Pressure Relief	PVDF	1/2"	EVB-2PVDF-50-SOC-M	468.00
	Body, Back & Pressure Relief	PVDF	1/2"	EVB-2PVDF-50-UNN	523.00
	Body, Back & Pressure Relief	PVDF	3/8"	EVB-2PVDF-38-BSPT	423.00
	Body, Back & Pressure Relief	PVDF	3/8"	EVB-2PVDF-38-NPT	423.00
	Body, Back & Pressure Relief	PVDF	3/8"	EVB-2PVDF-38-SOC	423.00

Item #	Description	Material	Size	Part #	Price
	Body, Back & Pressure Relief	PVDF	3/8"	EVB-2PVDF-38-SOC-M	423.00
	Body, Back & Pressure Relief	PVDF	3/8"	EVB-2PVDF-38-UNN	467.00
	Body, Back & Pressure Relief	PVDF	1/4"	EVB-2PVDF-25-BSPT	334.00
	Body, Back & Pressure Relief	PVDF	1/4"	EVB-2PVDF-25-NPT	334.00
	Body, Back & Pressure Relief	PVDF	1/4"	EVB-2PVDF-25-SOC	334.00
	Body, Back & Pressure Relief	PVDF	1/4"	EVB-2PVDF-25-SOC-M	334.00
	Body, Back & Pressure Relief	PVDF	1/4"	EVB-2PVDF-25-UNN	370.00
	Body, Back & Pressure Relief	Stainless Steel	1/2"	EVB-2SS-50-BSP	518.00
	Body, Back & Pressure Relief	Stainless Steel	1/2"	EVB-2SS-50-NPT	518.00
	Body, Back & Pressure Relief	Stainless Steel	1/2"	EVB-2SS-50-FLG	928.00
	Body, Back & Pressure Relief	Stainless Steel	1/2"	EVB-2SS-50-SOC	518.00
	Body, Back & Pressure Relief	Stainless Steel	1/2"	EVB-2SS-50-SOC-M	518.00
	Body, Back & Pressure Relief	Stainless Steel	3/8"	EVB-2SS-38-BSP	396.00
	Body, Back & Pressure Relief	Stainless Steel	3/8"	EVB-2SS-38-NPT	396.00
	Body, Back & Pressure Relief	Stainless Steel	3/8"	EVB-2SS-38-SOC	396.00
	Body, Back & Pressure Relief	Stainless Steel	3/8"	EVB-2SS-38-SOC-M	396.00
	Body, Back & Pressure Relief	Stainless Steel	1/4"	EVB-2SS-25-BSP	375.00
	Body, Back & Pressure Relief	Stainless Steel	1/4"	EVB-2SS-25-NPT	375.00
	Body, Back & Pressure Relief	Stainless Steel	1/4"	EVB-2SS-25-SOC	375.00
	Body, Back & Pressure Relief	Stainless Steel	1/4"	EVB-2SS-25-SOC-M	375.00
3	Diaphragm	EPDM	1/4", 3/8", 1/2"	EVD-3-25-E	36.00
	Diaphragm	Viton	1/4", 3/8", 1/2"	EVD-3-25-V	36.00
	Diaphragm	PTFE/EPDM	1/4", 3/8", 1/2"	EVD-3-25	36.00
4	Adjusting Bolt	Stainless Steel	1/4", 3/8", 1/2"	EVAB-4-25	2.30
5	Spring	Stainless Steel (Nickel Plated)	1/4", 3/8", 1/2"	EVS-5-25	25.00
6	Top Disc	Polypropylene	1/4", 3/8", 1/2"	EVTD-6-25	6.85
7	Bottom Disc	Polypropylene	1/4", 3/8", 1/2"	EVBD-7-25	8.95
8	Bolts SS (Plastic)	Stainless Steel	1/4", 3/8", 1/2"	EVSB-8-25	0.88
8A	Bolts SS (Metal)	Stainless Steel	1/4", 3/8", 1/2"	EVSB-8A-25	0.88
9	Lock Nut SS	Stainless Steel	1/4", 3/8", 1/2"	EVBN-9-25	0.88
10	Bolt Cap Cover	Vinyl	1/4", 3/8", 1/2"	EVBC-10-25	0.38
11	Gauge Port Cap	Nylon	1/4", 3/8", 1/2"	EVGC-11	0.38
12	Bonnet Cap Cover	Vinyl	1/4", 3/8", 1/2"	EVTC-12-BK-25	1.00
	Bonnet Cap Cover	Vinyl	1/4", 3/8", 1/2"	EVTC-12-BR-25	1.00

Item #	Description	Material	Size	Part #	Price
	Bonnet Cap Cover	Vinyl	1/4", 3/8", 1/2"	EVTC-12-G-25	1.00
	Bonnet Cap Cover	Vinyl	1/4", 3/8", 1/2"	EVTC-12-Y-25	1.00
13	Union Seal O-Ring	EPDM	1/4", 3/8", 1/2"	EVO-13-25-E	1.40
	Union Seal O-Ring	Viton	1/4", 3/8", 1/2"	EVO-13-25-V	2.80
14	Union Nut	CPVC	1/4", 3/8", 1/2"	EVUN-14-CPVC-25	10.25
	Union Nut	PP	1/4", 3/8", 1/2"	EVUN-14-PP-25	10.25
	Union Nut	PVC	1/4", 3/8", 1/2"	EVUN-14-PVC-25	5.95
	Union Nut	PVDF	1/4", 3/8", 1/2"	EVUN-14-PVDF-25	20.00
15	Union Insert	CPVC (Corzan)	1/2"	EVUI-15-CPVC-BSP-50	10.25
	Union Insert	CPVC (Corzan)	1/2"	EVUI-15-CPVC-NPT-50	10.25
	Union Insert	CPVC (Corzan)	1/2"	EVUI-15-CPVC-SOC-50	5.05
	Union Insert	CPVC (Corzan)	1/2"	EVUI-15-CPVC-SOC-M-50	5.05
	Union Insert	CPVC (Corzan)	3/8"	EVUI-15-CPVC-BSPT-38	10.25
	Union Insert	CPVC (Corzan)	3/8"	EVUI-15-CPVC-NPT-38	10.25
	Union Insert	CPVC (Corzan)	3/8"	EVUI-15-CPVC-SOC-38	5.05
	Union Insert	CPVC (Corzan)	3/8"	EVUI-15-CPVC-SOC-M-38	5.05
	Union Insert	CPVC (Corzan)	1/4"	EVUI-15-CPVC-BSPT-25	8.60
	Union Insert	CPVC (Corzan)	1/4"	EVUI-15-CPVC-NPT-25	8.60
	Union Insert	CPVC (Corzan)	1/4"	EVUI-15-CPVC-SOC-25	4.70
	Union Insert	CPVC (Corzan)	1/4"	EVUI-15-CPVC-SOC-M-25	4.70
	Union Insert	Polypropylene	1/2"	EVUI-15-PP-BSP-50	10.25
	Union Insert	Polypropylene	1/2"	EVUI-15-PP-NPT-50	10.25
	Union Insert	Polypropylene	1/2"	EVUI-15-PP-SOC-50	4.70
	Union Insert	Polypropylene	1/2"	EVUI-15-PP-SOC-M-50	4.70
	Union Insert	Polypropylene	3/8"	EVUI-15-PP-BSPT-38	11.25
	Union Insert	Polypropylene	3/8"	EVUI-15-PP-NPT-38	11.25
	Union Insert	Polypropylene	3/8"	EVUI-15-PP-SOC-38	4.70
	Union Insert	Polypropylene	3/8"	EVUI-15-PP-SOC-M-38	4.70
	Union Insert	Polypropylene	1/4"	EVUI-15-PP-BSPT-25	11.25
	Union Insert	Polypropylene	1/4"	EVUI-15-PP-NPT-25	11.25
	Union Insert	Polypropylene	1/4"	EVUI-15-PP-SOC-25	4.35
	Union Insert	Polypropylene	1/4"	EVUI-15-PP-SOC-M-25	4.35
	Union Insert	PVC	1/2"	EVUI-15-PVC-BSP-50	5.65
	Union Insert	PVC	1/2"	EVUI-15-PVC-NPT-50	5.65
	Union Insert	PVC	1/2"	EVUI-15-PVC-SOC-50	2.80
	Union Insert	PVC	1/2"	EVUI-15-PVC-SOC-M-50	2.80
	Union Insert	PVC	3/8"	EVUI-15-PVC-BSPT-38	6.85
	Union Insert	PVC	3/8"	EVUI-15-PVC-NPT-38	6.85
	Union Insert	PVC	3/8"	EVUI-15-PVC-SOC-38	2.80
	Union Insert	PVC	3/8"	EVUI-15-PVC-SOC-M-38	2.80
	Union Insert	PVC	1/4"	EVUI-15-PVC-BSPT-25	6.85
	Union Insert	PVC	1/4"	EVUI-15-PVC-NPT-25	6.85

					CODE E
Item #	Description	Material	Size	Part #	Price
	Union Insert	PVC	1/4"	EVUI-15-PVC-SOC-25	2.80
	Union Insert	PVC	1/4"	EVUI-15-PVC-SOC-M-25	2.80
	Union Insert	PVDF	1/2"	EVUI-15-PVDF-BSP-50	21.00
	Union Insert	PVDF	1/2"	EVUI-15-PVDF-NPT-50	21.00
	Union Insert	PVDF	1/2"	EVUI-15-PVDF-SOC-50	18.50
	Union Insert	PVDF	1/2"	EVUI-15-PVDF-SOC-M-50	18.50
	Union Insert	PVDF	3/8"	EVUI-15-PVDF-BSPT-38	21.00
	Union Insert	PVDF	3/8"	EVUI-15-PVDF-NPT-38	21.00
	Union Insert	PVDF	3/8"	EVUI-15-PVDF-SOC-38	16.50
	Union Insert	PVDF	3/8"	EVUI-15-PVDF-SOC-M-38	16.50
	Union Insert	PVDF	1/4"	EVUI-15-PVDF-BSPT-25	19.50
	Union Insert	PVDF	1/4"	EVUI-15-PVDF-NPT-25	19.50
	Union Insert	PVDF	1/4"	EVUI-15-PVDF-SOC-25	16.50
	Union Insert	PVDF	1/4"	EVUI-15-PVDF-SOC-M-25	16.50

Terms

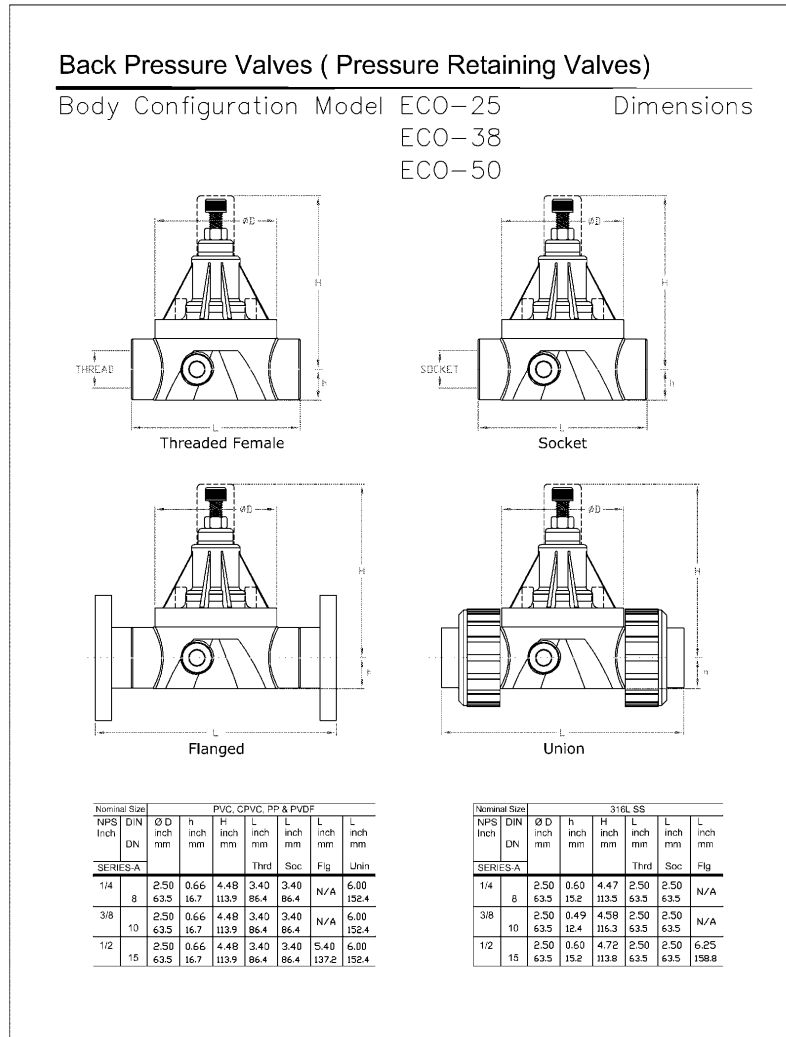
Prices quoted are in US Funds
 Net 30 days firm (upon approved credit)
 F.O.B. Burlington, Ontario, Canada
All Freight charges are extra
 Stock to (1) one week normal delivery on standard items
 Options and specials consult factory
 Prices subject to change without notice
 Minimum order of \$100.00 net

Recommended Spare Parts Service Kit

CODE E

Part #	To Suit Model #	Description	Price
EV25E	Eco Valve 1/4"	EPDM Diaph. Spring, Top and Bottom Disc	77.00
EV25V	Eco Valve 1/4"	Viton Diaph., Spring, Top and Bottom Disc	77.00
EV25T	Eco Valve 1/4"	PTFE/EPDM Diaph., Spring, Top and Bottom Disc	77.00
EV38E	Eco Valve 3/8"	EPDM Diaph. Spring, Top and Bottom Disc	77.00
EV38V	Eco Valve 3/8"	Viton Diaph., Spring, Top and Bottom Disc	77.00
EV38T	Eco Valve 3/8"	PTFE/EPDM Diaph., Spring, Top and Bottom Disc	77.00
EV50E	Eco Valve 1/2"	EPDM Diaph. Spring, Top and Bottom Disc	77.00
EV50V	Eco Valve 1/2"	Viton Diaph., Spring, Top and Bottom Disc	77.00
EV50T	Eco Valve 1/2"	PTFE/EPDM Diaph., Spring, Top and Bottom Disc	77.00

Body Configuration



Series "B" Exploded View – Back Pressure / Pressure Relief Valve
1/2" High Flow (ECO-55), 3/4" (ECO-75), 1" (ECO-100) ECO Valve

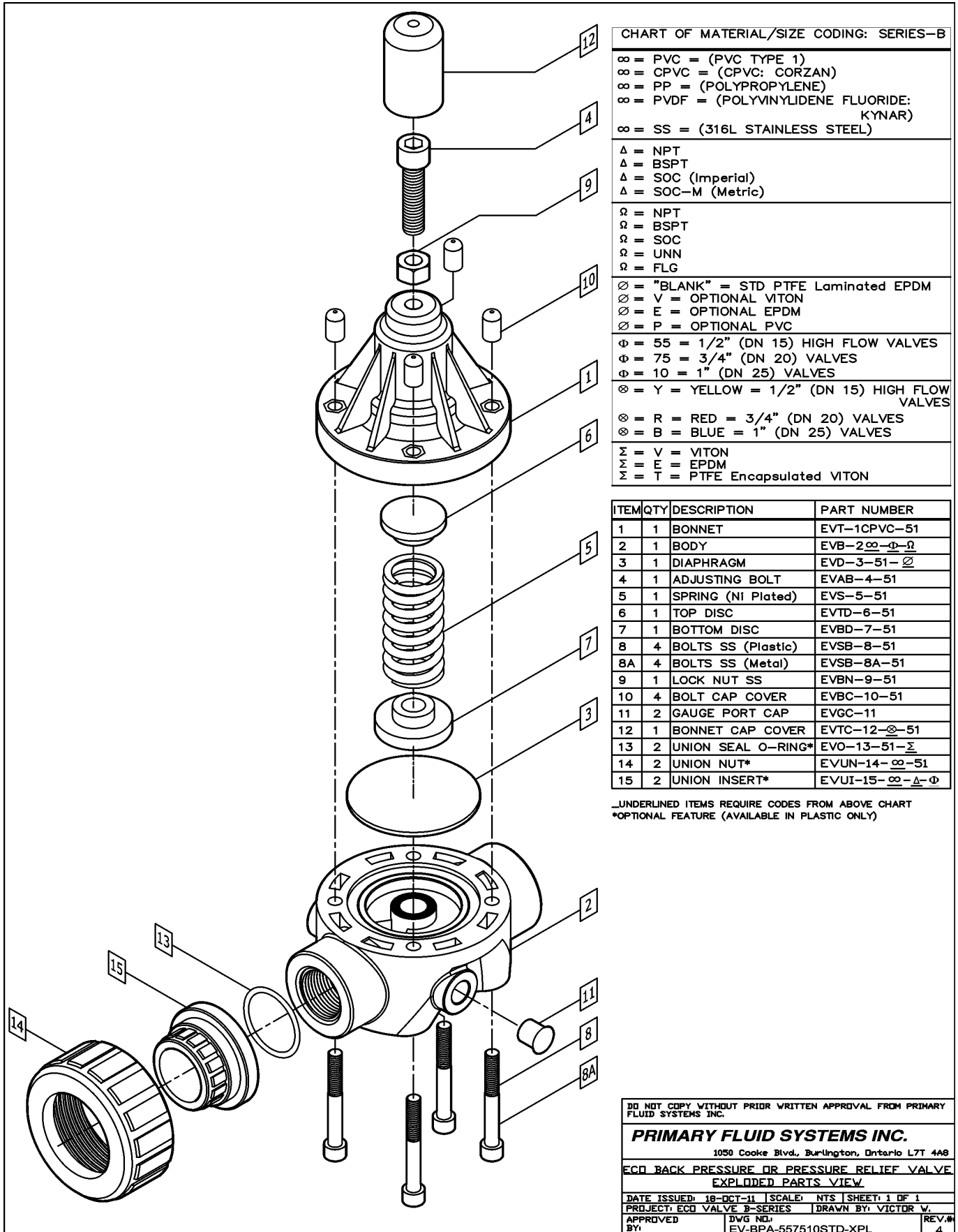


CHART OF MATERIAL/SIZE CODING: SERIES-B

∞ = PVC = (PVC TYPE 1)
∞ = CPVC = (CPVC: CORZAN)
∞ = PP = (POLYPROPYLENE)
∞ = PVDF = (POLYVINYLIDENE FLUORIDE: KYNAR)
∞ = SS = (316L STAINLESS STEEL)
Δ = NPT
Δ = BSPT
Δ = SOC (Imperial)
Δ = SOC-M (Metric)
Ω = NPT
Ω = BSPT
Ω = SOC
Ω = UNN
Ω = FLG
∅ = "BLANK" = STD PTFE Laminated EPDM
∅ = V = OPTIONAL VITON
∅ = E = OPTIONAL EPDM
∅ = P = OPTIONAL PVC
Φ = 55 = 1/2" (DN 15) HIGH FLOW VALVES
Φ = 75 = 3/4" (DN 20) VALVES
Φ = 10 = 1" (DN 25) VALVES
⊗ = Y = YELLOW = 1/2" (DN 15) HIGH FLOW VALVES
⊗ = R = RED = 3/4" (DN 20) VALVES
⊗ = B = BLUE = 1" (DN 25) VALVES
Σ = V = VITON
Σ = E = EPDM
Σ = T = PTFE Encapsulated VITON

ITEM	QTY	DESCRIPTION	PART NUMBER
1	1	BONNET	EVT-1CPVC-51
2	1	BODY	EVB-2 <u>∞-Φ-Ω</u>
3	1	DIAPHRAGM	EVD-3-51-∅
4	1	ADJUSTING BOLT	EVAB-4-51
5	1	SPRING (NI Plated)	EVS-5-51
6	1	TOP DISC	EVTD-6-51
7	1	BOTTOM DISC	EVBD-7-51
8	4	BOLTS SS (Plastic)	EVSB-8-51
8A	4	BOLTS SS (Metal)	EVSB-8A-51
9	1	LOCK NUT SS	EVBN-9-51
10	4	BOLT CAP COVER	EVBC-10-51
11	2	GAUGE PORT CAP	EVGC-11
12	1	BONNET CAP COVER	EVTC-12-∅-51
13	2	UNION SEAL O-RING*	EVO-13-51-Σ
14	2	UNION NUT*	EVUN-14-∞-51
15	2	UNION INSERT*	EVUI-15-∞-Δ-Φ

UNDERLINED ITEMS REQUIRE CODES FROM ABOVE CHART
 *OPTIONAL FEATURE (AVAILABLE IN PLASTIC ONLY)

DO NOT COPY WITHOUT PRIOR WRITTEN APPROVAL FROM PRIMARY FLUID SYSTEMS INC.

PRIMARY FLUID SYSTEMS INC.
 1050 Cooke Blvd, Burlington, Ontario L7T 4A8

ECO BACK PRESSURE OR PRESSURE RELIEF VALVE
EXPLODED PARTS VIEW

DATE ISSUED: 18-OCT-11 | SCALE: NTS | SHEET: 1 OF 1
 PROJECT: ECO VALVE B-SERIES | DRAWN BY: VICTOR W.

APPROVED BY: | DWG NO: EV-BPA-557510STD-XPL | REV.# 4

ECO Valve

55 (1/2" High Flow) – 75 (3/4") – 100 (1")

CODE E

Item #	Description	Material	Size	Part #	Price
1	Bonnet	CPVC (Corzan)	1/2", 3/4", 1"	EVT-1CPVC-51	144.00
	Bonnet	316 S/S	1/2", 3/4", 1"	EVT-1SS-51	286.00
	Bonnet	Aluminum	1/2", 3/4", 1"	EVT-1AL-51	138.00
2	Body, Back & Pressure Relief	CPVC (Corzan)	1"	EVB-2CPVC-10-BSP	589.00
	Body, Back & Pressure Relief	CPVC (Corzan)	1"	EVB-2CPVC-10-NPT	589.00
	Body, Back & Pressure Relief	CPVC (Corzan)	1"	EVB-2CPVC-10-FLG	737.00
	Body, Back & Pressure Relief	CPVC (Corzan)	1"	EVB-2CPVC-10-SOC	589.00
	Body, Back & Pressure Relief	CPVC (Corzan)	1"	EVB-2CPVC-10-SOC-M	589.00
	Body, Back & Pressure Relief	CPVC (Corzan)	1"	EVB-2CPVC-10-UNN	612.00
	Body, Back & Pressure Relief	CPVC (Corzan)	3/4"	EVB-2CPVC-75-BSP	398.00
	Body, Back & Pressure Relief	CPVC (Corzan)	3/4"	EVB-2CPVC-75-NPT	398.00
	Body, Back & Pressure Relief	CPVC (Corzan)	3/4"	EVB-2CPVC-75-FLG	516.00
	Body, Back & Pressure Relief	CPVC (Corzan)	3/4"	EVB-2CPVC-75-SOC	398.00
	Body, Back & Pressure Relief	CPVC (Corzan)	3/4"	EVB-2CPVC-75-SOC-M	398.00
	Body, Back & Pressure Relief	CPVC (Corzan)	3/4"	EVB-2CPVC-75-UNN	440.00
	Body, Back & Pressure Relief	CPVC (Corzan)	1/2"	EVB-2CPVC-55-BSP	374.00
	Body, Back & Pressure Relief	CPVC (Corzan)	1/2"	EVB-2CPVC-55-NPT	374.00
	Body, Back & Pressure Relief	CPVC (Corzan)	1/2"	EVB-2CPVC-55-FLG	487.00
	Body, Back & Pressure Relief	CPVC (Corzan)	1/2"	EVB-2CPVC-55-SOC	374.00
	Body, Back & Pressure Relief	CPVC (Corzan)	1/2"	EVB-2CPVC-55-SOC-M	374.00
	Body, Back & Pressure Relief	CPVC (Corzan)	1/2"	EVB-2CPVC-55-UNN	390.00
	Body, Back & Pressure Relief	Polypropylene	1"	EVB-2PP-10-BSP	431.00
	Body, Back & Pressure Relief	Polypropylene	1"	EVB-2PP-10-NPT	431.00
	Body, Back & Pressure Relief	Polypropylene	1"	EVB-2PP-10-FLG	797.00
	Body, Back & Pressure Relief	Polypropylene	1"	EVB-2PP-10-SOC	431.00
	Body, Back & Pressure Relief	Polypropylene	1"	EVB-2PP-10-SOC-M	431.00
	Body, Back & Pressure Relief	Polypropylene	1"	EVB-2PP-10-UNN	404.00
	Body, Back & Pressure Relief	Polypropylene	3/4"	EVB-2PP-75-BSP	335.00
	Body, Back & Pressure Relief	Polypropylene	3/4"	EVB-2PP-75-NPT	335.00
	Body, Back & Pressure Relief	Polypropylene	3/4"	EVB-2PP-75-FLG	696.00

Item #	Description	Material	Size	Part #	Price
	Body, Back & Pressure Relief	Polypropylene	3/4"	EVB-2PP-75-SOC	335.00
	Body, Back & Pressure Relief	Polypropylene	3/4"	EVB-2PP-75-SOC-M	335.00
	Body, Back & Pressure Relief	Polypropylene	3/4"	EVB-2PP-75-UNN	367.00
	Body, Back & Pressure Relief	Polypropylene	1/2"	EVB-2PP-55-BSP	310.00
	Body, Back & Pressure Relief	Polypropylene	1/2"	EVB-2PP-55-NPT	310.00
	Body, Back & Pressure Relief	Polypropylene	1/2"	EVB-2PP-55-FLG	594.00
	Body, Back & Pressure Relief	Polypropylene	1/2"	EVB-2PP-55-SOC	310.00
	Body, Back & Pressure Relief	Polypropylene	1/2"	EVB-2PP-55-SOC-M	310.00
	Body, Back & Pressure Relief	Polypropylene	1/2"	EVB-2PP-55-UNN	318.00
	Body, Back & Pressure Relief	PVC	1"	EVB-2PVC-10-BSP	425.00
	Body, Back & Pressure Relief	PVC	1"	EVB-2PVC-10-NPT	425.00
	Body, Back & Pressure Relief	PVC	1"	EVB-2PVC-10-FLG	553.00
	Body, Back & Pressure Relief	PVC	1"	EVB-2PVC-10-SOC	425.00
	Body, Back & Pressure Relief	PVC	1"	EVB-2PVC-10-SOC-M	425.00
	Body, Back & Pressure Relief	PVC	1"	EVB-2PVC-10-UNN	445.00
	Body, Back & Pressure Relief	PVC	3/4"	EVB-2PVC-75-BSP	330.00
	Body, Back & Pressure Relief	PVC	3/4"	EVB-2PVC-75-NPT	330.00
	Body, Back & Pressure Relief	PVC	3/4"	EVB-2PVC-75-FLG	427.00
	Body, Back & Pressure Relief	PVC	3/4"	EVB-2PVC-75-SOC	330.00
	Body, Back & Pressure Relief	PVC	3/4"	EVB-2PVC-75-SOC-M	330.00
	Body, Back & Pressure Relief	PVC	3/4"	EVB-2PVC-75-UNN	355.00
	Body, Back & Pressure Relief	PVC	1/2"	EVB-2PVC-55-BSP	300.00
	Body, Back & Pressure Relief	PVC	1/2"	EVB-2PVC-55-NPT	300.00
	Body, Back & Pressure Relief	PVC	1/2"	EVB-2PVC-55-FLG	390.00
	Body, Back & Pressure Relief	PVC	1/2"	EVB-2PVC-55-SOC	300.00
	Body, Back & Pressure Relief	PVC	1/2"	EVB-2PVC-55-SOC-M	300.00
	Body, Back & Pressure Relief	PVC	1/2"	EVB-2PVC-55-UNN	331.00
	Body, Back & Pressure Relief	PVDF	1"	EVB-2PVDF-10-BSP	777.00
	Body, Back & Pressure Relief	PVDF	1"	EVB-2PVDF-10-NPT	777.00
	Body, Back & Pressure Relief	PVDF	1"	EVB-2PVDF-10-FLG	1,350.00

Item #	Description	Material	Size	Part #	Price
	Body, Back & Pressure Relief	PVDF	1"	EVB-2PVDF-10-SOC	777.00
	Body, Back & Pressure Relief	PVDF	1"	EVB-2PVDF-10-SOC-M	777.00
	Body, Back & Pressure Relief	PVDF	1"	EVB-2PVDF-10-UNN	834.00
	Body, Back & Pressure Relief	PVDF	3/4"	EVB-2PVDF-75-BSP	707.00
	Body, Back & Pressure Relief	PVDF	3/4"	EVB-2PVDF-75-NPT	707.00
	Body, Back & Pressure Relief	PVDF	3/4"	EVB-2PVDF-75-FLG	993.00
	Body, Back & Pressure Relief	PVDF	3/4"	EVB-2PVDF-75-SOC	706.00
	Body, Back & Pressure Relief	PVDF	3/4"	EVB-2PVDF-75-SOC-M	706.00
	Body, Back & Pressure Relief	PVDF	3/4"	EVB-2PVDF-75-UNN	773.00
	Body, Back & Pressure Relief	PVDF	1/2"	EVB-2PVDF-55-BSP	567.00
	Body, Back & Pressure Relief	PVDF	1/2"	EVB-2PVDF-55-NPT	567.00
	Body, Back & Pressure Relief	PVDF	1/2"	EVB-2PVDF-55-FLG	908.00
	Body, Back & Pressure Relief	PVDF	1/2"	EVB-2PVDF-55-SOC	567.00
	Body, Back & Pressure Relief	PVDF	1/2"	EVB-2PVDF-55-SOC-M	567.00
	Body, Back & Pressure Relief	PVDF	1/2"	EVB-2PVDF-55-UNN	616.00
	Body, Back & Pressure Relief	Stainless Steel	1"	EVB-2SS-10-BSP	866.00
	Body, Back & Pressure Relief	Stainless Steel	1"	EVB-2SS-10-NPT	866.00
	Body, Back & Pressure Relief	Stainless Steel	1"	EVB-2SS-10-FLG	1,540.00
	Body, Back & Pressure Relief	Stainless Steel	1"	EVB-2SS-10-SOC	866.00
	Body, Back & Pressure Relief	Stainless Steel	1"	EVB-2SS-10-SOC-M	866.00
	Body, Back & Pressure Relief	Stainless Steel	3/4"	EVB-2SS-75-BSP	657.00
	Body, Back & Pressure Relief	Stainless Steel	3/4"	EVB-2SS-75-NPT	657.00
	Body, Back & Pressure Relief	Stainless Steel	3/4"	EVB-2SS-75-FLG	1,152.00
	Body, Back & Pressure Relief	Stainless Steel	3/4"	EVB-2SS-75-SOC	657.00
	Body, Back & Pressure Relief	Stainless Steel	3/4"	EVB-2SS-75-SOC-M	657.00
	Body, Back & Pressure Relief	Stainless Steel	1/2"	EVB-2SS-55-BSP	629.00
	Body, Back & Pressure Relief	Stainless Steel	1/2"	EVB-2SS-55-NPT	629.00
	Body, Back & Pressure Relief	Stainless Steel	1/2"	EVB-2SS-55-FLG	1,096.00
	Body, Back & Pressure Relief	Stainless Steel	1/2"	EVB-2SS-55-SOC	629.00
	Body, Back & Pressure Relief	Stainless Steel	1/2"	EVB-2SS-55-SOC-M	629.00
3	Diaphragm	EPDM	1/2", 3/4", 1"	EVD-3-51-E	80.00

Item #	Description	Material	Size	Part #	Price
	Diaphragm	Viton	1/2", 3/4", 1"	EVD-3-51-V	80.00
	Diaphragm	PTFE/EPDM	1/2", 3/4", 1"	EVD-3-51	80.00
4	Adjusting Bolt	Stainless Steel	1/2", 3/4", 1"	EVAB-4-51	2.25
5	Spring	Stainless Steel (Nickel Plated)	1/2', 3/4' & 1"	EVS-5-51	44.00
6	Top Disc	Polypropylene	1/2', 3/4' & 1"	EVTD-6-51	6.85
7	Bottom Disc	Polypropylene	1/2', 3/4' & 1"	EVBD-7-51	8.65
8	Bolts SS (Plastic)	Stainless Steel	1/2', 3/4' & 1"	EVSB-8-51	2.65
8A	Bolts SS (Metal)	Stainless Steel	1/2', 3/4' & 1"	EVSB-8A-51	2.65
9	Lock Nut SS	Stainless Steel	1/2', 3/4' & 1"	EVBN-9-51	0.80
10	Bolt Cap Cover	Vinyl	1/2', 3/4' & 1"	EVBC-10-51	0.31
11	Gauge Port Cap	Nylon	1/2', 3/4' & 1"	EVGC-11	0.38
12	Bonnet Cap Cover	Vinyl	1/2', 3/4' & 1"	EVTC-12-B-51	0.94
	Bonnet Cap Cover	Vinyl	1/2', 3/4' & 1"	EVTC-12-R-51	0.94
	Bonnet Cap Cover	Vinyl	1/2', 3/4' & 1"	EVTC-12-Y-51	0.94
13	Union Seal O-Ring	EPDM	1/2', 3/4' & 1"	EVO-13-51-E	1.55
	Union Seal O-Ring	Viton	1/2', 3/4' & 1"	EVO-13-51-V	3.10
14	Union Nut	CPVC	1/2', 3/4' & 1"	EVUN-14-CPVC-51	11.25
	Union Nut	PP	1/2', 3/4' & 1"	EVUN-14-PP-51	13.75
	Union Nut	PVC	1/2', 3/4' & 1"	EVUN-14-PVC-51	7.45
	Union Nut	PVDF	1/2', 3/4' & 1"	EVUN-14-PVDF-51	23.00
15	Union Insert	CPVC (Corzan)	1"	EVUI-15-CPVC-BSPT-10	11.25
	Union Insert	CPVC (Corzan)	1"	EVUI-15-CPVC-NPT-10	11.25
	Union Insert	CPVC (Corzan)	1"	EVUI-15-CPVC-SOC-10	5.65
	Union Insert	CPVC (Corzan)	1"	EVUI-15-CPVC-SOC-M-10	5.65
	Union Insert	CPVC (Corzan)	3/4"	EVUI-15-CPVC-BSPT-75	10.25
	Union Insert	CPVC (Corzan)	3/4"	EVUI-15-CPVC-NPT-75	10.25
	Union Insert	CPVC (Corzan)	3/4"	EVUI-15-CPVC-SOC-75	4.95
	Union Insert	CPVC (Corzan)	3/4"	EVUI-15-CPVC-SOC-M-75	4.95
	Union Insert	CPVC (Corzan)	1/2"	EVUI-15-CPVC-BSPT-55	8.60
	Union Insert	CPVC (Corzan)	1/2"	EVUI-15-CPVC-NPT-55	8.60
	Union Insert	CPVC (Corzan)	1/2"	EVUI-15-CPVC-SOC-55	4.35
	Union Insert	CPVC (Corzan)	1/2"	EVUI-15-CPVC-SOC-M-55	4.35
	Union Insert	Polypropylene	1"	EVUI-15-PP-BSPT-10	8.60
	Union Insert	Polypropylene	1"	EVUI-15-PP-NPT-10	8.60
	Union Insert	Polypropylene	1"	EVUI-15-PP-SOC-10	8.60
	Union Insert	Polypropylene	1"	EVUI-15-PP-SOC-M-10	8.60
	Union Insert	Polypropylene	3/4"	EVUI-15-PP-BSP-75	7.45
	Union Insert	Polypropylene	3/4"	EVUI-15-PP-NPT-75	7.45
	Union Insert	Polypropylene	3/4"	EVUI-15-PP-SOC-75	7.45
	Union Insert	Polypropylene	3/4"	EVUI-15-PP-SOC-M-75	7.45
	Union Insert	Polypropylene	1/2"	EVUI-15-PP-BSP-55	5.65

Item #	Description	Material	Size	Part #	Price
	Union Insert	Polypropylene	1/2"	EVUI-15-PP-NPT-55	5.65
	Union Insert	Polypropylene	1/2"	EVUI-15-PP-SOC-55	5.65
	Union Insert	Polypropylene	1/2"	EVUI-15-PP-SOC-M-55	5.65
	Union Insert	PVC	1"	EVUI-15-PVC-BSPT-10	7.45
	Union Insert	PVC	1"	EVUI-15-PVC-NPT-10	7.45
	Union Insert	PVC	1"	EVUI-15-PVC-SOC-10	4.95
	Union Insert	PVC	1"	EVUI-15-PVC-SOC-M-10	4.95
	Union Insert	PVC	3/4"	EVUI-15-PVC-BSP-75	5.95
	Union Insert	PVC	3/4"	EVUI-15-PVC-NPT-75	5.95
	Union Insert	PVC	3/4"	EVUI-15-PVC-SOC-75	4.35
	Union Insert	PVC	3/4"	EVUI-15-PVC-SOC-M-75	4.35
	Union Insert	PVC	1/2"	EVUI-15-PVC-BSP-55	5.65
	Union Insert	PVC	1/2"	EVUI-15-PVC-NPT-55	5.65
	Union Insert	PVC	1/2"	EVUI-15-PVC-SOC-55	3.70
	Union Insert	PVC	1/2"	EVUI-15-PVC-SOC-M-55	3.70
	Union Insert	PVDF	1"	EVUI-15-PVDF-BSPT-10	29.00
	Union Insert	PVDF	1"	EVUI-15-PVDF-NPT-10	29.00
	Union Insert	PVDF	1"	EVUI-15-PVDF-SOC-10	23.00
	Union Insert	PVDF	1"	EVUI-15-PVDF-SOC-M-10	23.00
	Union Insert	PVDF	3/4"	EVUI-15-PVDF-BSP-75	29.00
	Union Insert	PVDF	3/4"	EVUI-15-PVDF-NPT-75	29.00
	Union Insert	PVDF	3/4"	EVUI-15-PVDF-SOC-75	23.00
	Union Insert	PVDF	3/4"	EVUI-15-PVDF-SOC-M-75	23.00
	Union Insert	PVDF	1/2"	EVUI-15-PVDF-BSP-55	23.00
	Union Insert	PVDF	1/2"	EVUI-15-PVDF-NPT-55	23.00
	Union Insert	PVDF	1/2"	EVUI-15-PVDF-SOC-55	18.50
	Union Insert	PVDF	1/2"	EVUI-15-PVDF-SOC-M-55	18.50

Recommended Spare Parts Service Kit

CODE E

Part #	To Suit Model #	Description	Price
EV55E	ECO Valve 1/2"	EPDM Diaph. Spring, Top and Bottom Disc	139.00
EV55V	ECO Valve 1/2"	Viton Diaph., Spring, Top and Bottom Disc	139.00
EV55T	ECO Valve 1/2"	PTFE/EPDM Diaph., Spring, Top and Bottom Disc	139.00
EV75E	ECO Valve 3/4"	EPDM Diaph. Spring, Top and Bottom Disc	139.00
EV75V	ECO Valve 3/4"	Viton Diaph., Spring, Top and Bottom Disc	139.00
EV75T	ECO Valve 3/4"	PTFE/EPDM Diaph., Spring, Top and Bottom Disc	139.00
EV10E	ECO Valve 1"	EPDM Diaph. Spring, Top and Bottom Disc	139.00
EV10V	ECO Valve 1"	Viton Diaph., Spring, Top and Bottom Disc	139.00
EV10T	ECO Valve 1"	PTFE/EPDM Diaph., Spring, Top and Bottom Disc	139.00

Body Configuration

Back Pressure Valves (Pressure Retaining Valves)
1/2" High Flow, 3/4", 1" ECO Valves

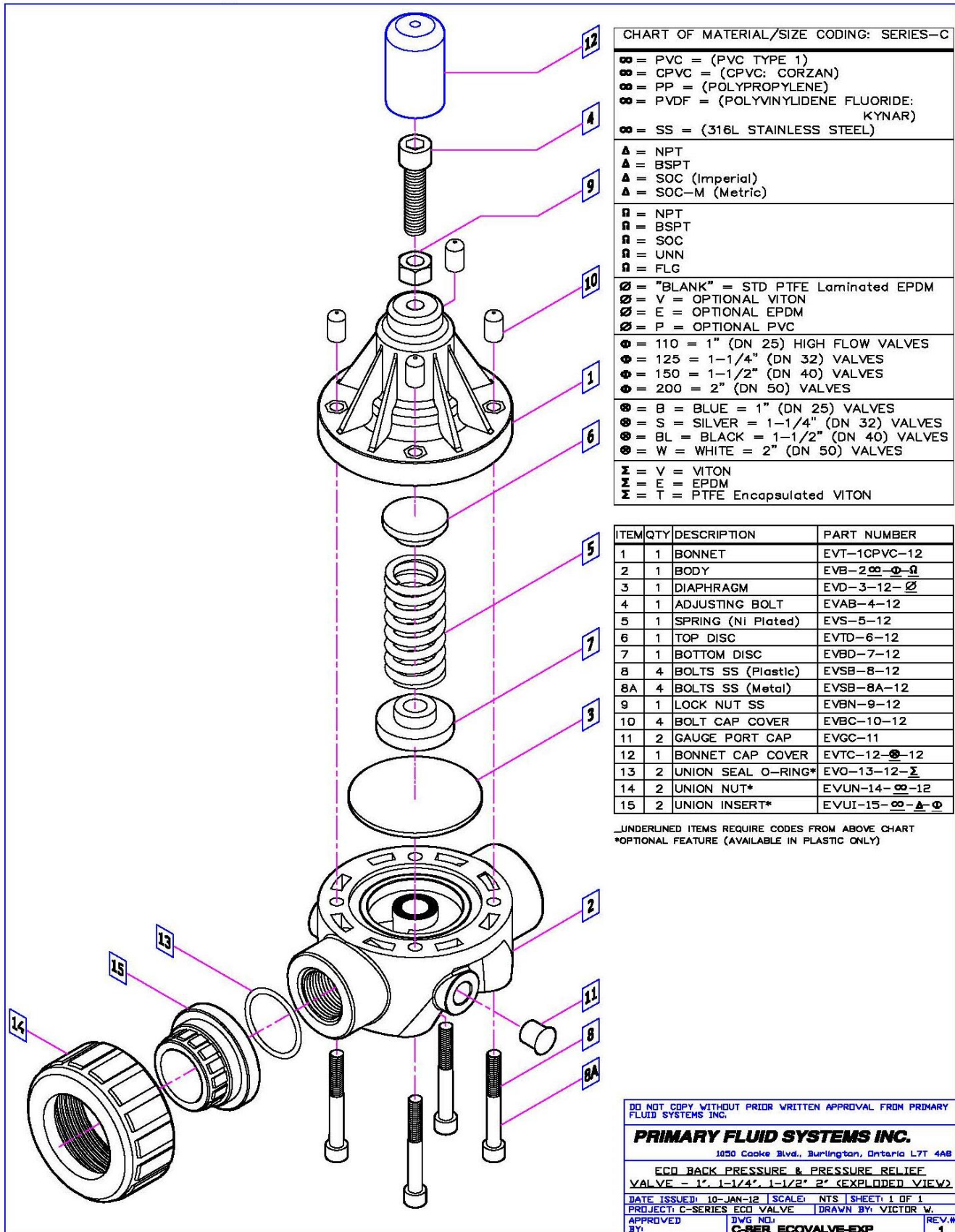
Body Configuration Model ECO-55 Dimensions
 ECO-75
 ECO-100

Nominal Size		PVC, CPVC, PP & PVDF						
NPS Inch	DIN DN	Ø D inch mm	h inch mm	H inch mm	L inch mm	L inch mm	L inch mm	
SERIES-B		Thrd Soc Flg Unin						
1/2 High Flow	15	3.50 88.9	0.88 22.4	4.80 121.9	4.85 123.2	4.85 123.2	6.93 176.0	6.96 176.8
3/4	20	3.50 88.9	0.88 22.4	4.80 121.9	4.85 123.2	4.85 123.2	7.17 182.1	6.96 176.8
1	25	3.50 88.9	0.88 22.4	4.80 121.9	4.85 123.2	4.85 123.2	7.48 190.0	6.96 176.8

Nominal Size		316L SS						
NPS Inch	DIN DN	Ø D inch mm	h inch mm	H inch mm	L inch mm	L inch mm	L inch mm	
SERIES-B		Thrd Soc Flg						
1/2 High Flow	15	3.50 88.9	0.63 16.0	4.80 121.9	3.50 88.9	3.50 88.9	7.25 184.2	
3/4	20	3.50 88.9	0.73 18.5	4.80 121.9	3.50 88.9	3.50 88.9	7.63 193.8	
1	25	3.50 88.9	0.86 21.8	5.10 129.5	3.50 88.9	3.50 88.9	7.88 200.2	

Exploded View – Back Pressure / Pressure Relief Valve

ECO-110, ECO-125, ECO-150, ECO-200



ECO Valve

110 (1" High Flow) – 125 (1 1/4") – 150 (1 1/2") – 200 (2")

CODE E

Item #	Description	Material	Size	Part #	Price
1	Bonnet	CPVC (Corzan)	1", 1 1/4", 1 1/2", 2"	EVT-1CPVC-12	190.00
	Bonnet	316 S/S	1", 1 1/4", 1 1/2", 2"	EVT-1SS-12	420.00
	Bonnet	Aluminum	1", 1 1/4", 1 1/2", 2"	EVT-1AL-12	205.00
2	Body, Back & Pressure Relief	CPVC (Corzan)	2"	EVB-2CPVC-200-BSP	1,186.00
	Body, Back & Pressure Relief	CPVC (Corzan)	2"	EVB-2CPVC-200-NPT	1,186.00
	Body, Back & Pressure Relief	CPVC (Corzan)	2"	EVB-2CPVC-200-FLG	1,601.00
	Body, Back & Pressure Relief	CPVC (Corzan)	2"	EVB-2CPVC-200-SOC	1,186.00
	Body, Back & Pressure Relief	CPVC (Corzan)	2"	EVB-2CPVC-200-SOC-M	1,186.00
	Body, Back & Pressure Relief	CPVC (Corzan)	2"	EVB-2CPVC-200-UNN	1,293.00
	Body, Back & Pressure Relief	CPVC (Corzan)	1 1/2"	EVB-2CPVC-150-BSP	703.00
	Body, Back & Pressure Relief	CPVC (Corzan)	1 1/2"	EVB-2CPVC-150-NPT	703.00
	Body, Back & Pressure Relief	CPVC (Corzan)	1 1/2"	EVB-2CPVC-150-FLG	950.00
	Body, Back & Pressure Relief	CPVC (Corzan)	1 1/2"	EVB-2CPVC-150-SOC	703.00
	Body, Back & Pressure Relief	CPVC (Corzan)	1 1/2"	EVB-2CPVC-150-SOC-M	703.00
	Body, Back & Pressure Relief	CPVC (Corzan)	1 1/2"	EVB-2CPVC-150-UNN	766.00
	Body, Back & Pressure Relief	CPVC (Corzan)	1 1/4"	EVB-2CPVC-125-BSP	653.00
	Body, Back & Pressure Relief	CPVC (Corzan)	1 1/4"	EVB-2CPVC-125-NPT	653.00
	Body, Back & Pressure Relief	CPVC (Corzan)	1 1/4"	EVB-2CPVC-125-FLG	880.00
	Body, Back & Pressure Relief	CPVC (Corzan)	1 1/4"	EVB-2CPVC-125-SOC	653.00
	Body, Back & Pressure Relief	CPVC (Corzan)	1 1/4"	EVB-2CPVC-125-SOC-M	653.00
	Body, Back & Pressure Relief	CPVC (Corzan)	1 1/4"	EVB-2CPVC-125-UNN	710.00
	Body, Back & Pressure Relief	CPVC (Corzan)	1"	EVB-2CPVC-110-BSP	489.00
	Body, Back & Pressure Relief	CPVC (Corzan)	1"	EVB-2CPVC-110-NPT	489.00
	Body, Back & Pressure Relief	CPVC (Corzan)	1"	EVB-2CPVC-110-FLG	656.00
	Body, Back & Pressure Relief	CPVC (Corzan)	1"	EVB-2CPVC-110-SOC	489.00
	Body, Back & Pressure Relief	CPVC (Corzan)	1"	EVB-2CPVC-110-SOC-M	489.00
	Body, Back & Pressure Relief	CPVC (Corzan)	1"	EVB-2CPVC-110-UNN	534.00
	Body, Back & Pressure Relief	Polypropylene	2"	EVB-2PP-200-BSP	863.00
	Body, Back & Pressure Relief	Polypropylene	2"	EVB-2PP-200-NPT	863.00
	Body, Back & Pressure Relief	Polypropylene	2"	EVB-2PP-200-FLG	1,160.00

Item #	Description	Material	Size	Part #	Price
	Body, Back & Pressure Relief	Polypropylene	2"	EVB-2PP-200-SOC	863.00
	Body, Back & Pressure Relief	Polypropylene	2"	EVB-2PP-200-SOC-M	863.00
	Body, Back & Pressure Relief	Polypropylene	2"	EVB-2PP-200-UNN	937.00
	Body, Back & Pressure Relief	Polypropylene	1 ½"	EVB-2PP-150-BSP	670.00
	Body, Back & Pressure Relief	Polypropylene	1 ½"	EVB-2PP-150-NPT	670.00
	Body, Back & Pressure Relief	Polypropylene	1 ½"	EVB-2PP-150-FLG	898.00
	Body, Back & Pressure Relief	Polypropylene	1 ½"	EVB-2PP-150-SOC	670.00
	Body, Back & Pressure Relief	Polypropylene	1 ½"	EVB-2PP-150-SOC-M	670.00
	Body, Back & Pressure Relief	Polypropylene	1 ½"	EVB-2PP-150-UNN	724.00
	Body, Back & Pressure Relief	Polypropylene	1 ¼"	EVB-2PP-125-BSP	594.00
	Body, Back & Pressure Relief	Polypropylene	1 ¼"	EVB-2PP-125-NPT	594.00
	Body, Back & Pressure Relief	Polypropylene	1 ¼"	EVB-2PP-125-FLG	802.00
	Body, Back & Pressure Relief	Polypropylene	1 ¼"	EVB-2PP-125-SOC	594.00
	Body, Back & Pressure Relief	Polypropylene	1 ¼"	EVB-2PP-125-SOC-M	594.00
	Body, Back & Pressure Relief	Polypropylene	1 ¼"	EVB-2PP-125-UNN	650.00
	Body, Back & Pressure Relief	Polypropylene	1"	EVB-2PP-110-BSP	569.00
	Body, Back & Pressure Relief	Polypropylene	1"	EVB-2PP-110-NPT	569.00
	Body, Back & Pressure Relief	Polypropylene	1"	EVB-2PP-110-FLG	766.00
	Body, Back & Pressure Relief	Polypropylene	1"	EVB-2PP-110-SOC	569.00
	Body, Back & Pressure Relief	Polypropylene	1"	EVB-2PP-110-SOC-M	569.00
	Body, Back & Pressure Relief	Polypropylene	1"	EVB-2PP-110-UNN	621.00
	Body, Back & Pressure Relief	PVC	2"	EVB-2PVC-200-BSP	818.00
	Body, Back & Pressure Relief	PVC	2"	EVB-2PVC-200-NPT	818.00
	Body, Back & Pressure Relief	PVC	2"	EVB-2PVC-200-FLG	1,103.00
	Body, Back & Pressure Relief	PVC	2"	EVB-2PVC-200-SOC	818.00
	Body, Back & Pressure Relief	PVC	2"	EVB-2PVC-200-SOC-M	818.00
	Body, Back & Pressure Relief	PVC	2"	EVB-2PVC-200-UNN	892.00
	Body, Back & Pressure Relief	PVC	1 ½"	EVB-2PVC-150-BSP	629.00
	Body, Back & Pressure Relief	PVC	1 ½"	EVB-2PVC-150-NPT	629.00
	Body, Back & Pressure Relief	PVC	1 ½"	EVB-2PVC-150-FLG	849.00

Item #	Description	Material	Size	Part #	Price
	Body, Back & Pressure Relief	PVC	1 1/2"	EVB-2PVC-150-SOC	629.00
	Body, Back & Pressure Relief	PVC	1 1/2"	EVB-2PVC-150-SOC-M	629.00
	Body, Back & Pressure Relief	PVC	1 1/2"	EVB-2PVC-150-UNN	686.00
	Body, Back & Pressure Relief	PVC	1 1/4"	EVB-2PVC-125-BSP	571.00
	Body, Back & Pressure Relief	PVC	1 1/4"	EVB-2PVC-125-NPT	571.00
	Body, Back & Pressure Relief	PVC	1 1/4"	EVB-2PVC-125-FLG	774.00
	Body, Back & Pressure Relief	PVC	1 1/4"	EVB-2PVC-125-SOC	571.00
	Body, Back & Pressure Relief	PVC	1 1/4"	EVB-2PVC-125-SOC-M	571.00
	Body, Back & Pressure Relief	PVC	1 1/4"	EVB-2PVC-125-UNN	625.00
	Body, Back & Pressure Relief	PVC	1"	EVB-2PVC-110-BSP	531.00
	Body, Back & Pressure Relief	PVC	1"	EVB-2PVC-110-NPT	531.00
	Body, Back & Pressure Relief	PVC	1"	EVB-2PVC-110-FLG	718.00
	Body, Back & Pressure Relief	PVC	1"	EVB-2PVC-110-SOC	531.00
	Body, Back & Pressure Relief	PVC	1"	EVB-2PVC-110-SOC-M	531.00
	Body, Back & Pressure Relief	PVC	1"	EVB-2PVC-110-UNN	582.00
	Body, Back & Pressure Relief	PVDF	2"	EVB-2PVDF-200-BSP	2,522.00
	Body, Back & Pressure Relief	PVDF	2"	EVB-2PVDF-200-NPT	2,522.00
	Body, Back & Pressure Relief	PVDF	2"	EVB-2PVDF-200-FLG	3,407.00
	Body, Back & Pressure Relief	PVDF	2"	EVB-2PVDF-200-SOC	2,522.00
	Body, Back & Pressure Relief	PVDF	2"	EVB-2PVDF-200-SOC-M	2,522.00
	Body, Back & Pressure Relief	PVDF	2"	EVB-2PVDF-200-UNN	2,751.00
	Body, Back & Pressure Relief	PVDF	1 1/2"	EVB-2PVDF-150-BSP	1,445.00
	Body, Back & Pressure Relief	PVDF	1 1/2"	EVB-2PVDF-150-NPT	1,445.00
	Body, Back & Pressure Relief	PVDF	1 1/2"	EVB-2PVDF-150-FLG	1,951.00
	Body, Back & Pressure Relief	PVDF	1 1/2"	EVB-2PVDF-150-SOC	1,445.00
	Body, Back & Pressure Relief	PVDF	1 1/2"	EVB-2PVDF-150-SOC-M	1,445.00
	Body, Back & Pressure Relief	PVDF	1 1/2"	EVB-2PVDF-150-UNN	1,577.00
	Body, Back & Pressure Relief	PVDF	1 1/4"	EVB-2PVDF-125-BSP	1,318.00
	Body, Back & Pressure Relief	PVDF	1 1/4"	EVB-2PVDF-125-NPT	1,318.00
	Body, Back & Pressure Relief	PVDF	1 1/4"	EVB-2PVDF-125-FLG	1,776.00

Item #	Description	Material	Size	Part #	Price
	Body, Back & Pressure Relief	PVDF	1 ¼"	EVB-2PVDF-125-SOC	1,318.00
	Body, Back & Pressure Relief	PVDF	1 ¼"	EVB-2PVDF-125-SOC-M	1,318.00
	Body, Back & Pressure Relief	PVDF	1 ¼"	EVB-2PVDF-125-UNN	1,437.00
	Body, Back & Pressure Relief	PVDF	1"	EVB-2PVDF-110-BSP	1,247.00
	Body, Back & Pressure Relief	PVDF	1"	EVB-2PVDF-110-NPT	1,247.00
	Body, Back & Pressure Relief	PVDF	1"	EVB-2PVDF-110-FLG	1,683.00
	Body, Back & Pressure Relief	PVDF	1"	EVB-2PVDF-110-SOC	1,247.00
	Body, Back & Pressure Relief	PVDF	1"	EVB-2PVDF-110-SOC-M	1,247.00
	Body, Back & Pressure Relief	PVDF	1"	EVB-2PVDF-110-UNN	1,361.00
	Body, Back & Pressure Relief	Stainless Steel	2"	EVB-2SS-200-BSP	2,637.00
	Body, Back & Pressure Relief	Stainless Steel	2"	EVB-2SS-200-NPT	2,637.00
	Body, Back & Pressure Relief	Stainless Steel	2"	EVB-2SS-200-FLG	3,696.00
	Body, Back & Pressure Relief	Stainless Steel	2"	EVB-2SS-200-SOC	2,637.00
	Body, Back & Pressure Relief	Stainless Steel	2"	EVB-2SS-200-SOC-M	2,637.00
	Body, Back & Pressure Relief	Stainless Steel	1 ½"	EVB-2SS-150-BSP	1,722.00
	Body, Back & Pressure Relief	Stainless Steel	1 ½"	EVB-2SS-150-NPT	1,722.00
	Body, Back & Pressure Relief	Stainless Steel	1 ½"	EVB-2SS-150-FLG	2,670.00
	Body, Back & Pressure Relief	Stainless Steel	1 ½"	EVB-2SS-150-SOC	1,722.00
	Body, Back & Pressure Relief	Stainless Steel	1 ½"	EVB-2SS-150-SOC-M	1,722.00
	Body, Back & Pressure Relief	Stainless Steel	1 ¼"	EVB-2SS-125-BSP	1,560.00
	Body, Back & Pressure Relief	Stainless Steel	1 ¼"	EVB-2SS-125-NPT	1,560.00
	Body, Back & Pressure Relief	Stainless Steel	1 ¼"	EVB-2SS-125-FLG	2,247.00
	Body, Back & Pressure Relief	Stainless Steel	1 ¼"	EVB-2SS-125-SOC	1,560.00
	Body, Back & Pressure Relief	Stainless Steel	1 ¼"	EVB-2SS-125-SOC-M	1,560.00
	Body, Back & Pressure Relief	Stainless Steel	1"	EVB-2SS-110-BSP	1,484.00
	Body, Back & Pressure Relief	Stainless Steel	1"	EVB-2SS-110-NPT	1,484.00
	Body, Back & Pressure Relief	Stainless Steel	1"	EVB-2SS-110-FLG	2,142.00
	Body, Back & Pressure Relief	Stainless Steel	1"	EVB-2SS-110-SOC	1,484.00
	Body, Back & Pressure Relief	Stainless Steel	1"	EVB-2SS-110-SOC-M	1,484.00
3	Diaphragm	EPDM	1", 1 ¼", 1 ½", 2"	EVD-3-12-E	101.00
	Diaphragm	Viton	1", 1 ¼", 1 ½", 2"	EVD-3-12-V	101.00
	Diaphragm	PTFE/EPDM	1", 1 ¼", 1 ½", 2"	EVD-3-12	101.00

Item #	Description	Material	Size	Part #	Price
4	Adjusting Bolt	Stainless Steel	1", 1 1/4", 1 1/2", 2"	EVAB-4-12	2.80
5	Spring	Stainless Steel (Nickel Plated)	1", 1 1/4", 1 1/2", 2"	EVS-5-12	54.00
6	Top Disc	Polypropylene	1", 1 1/4", 1 1/2", 2"	EVTD-6-12	7.10
7	Bottom Disc	Polypropylene	1", 1 1/4", 1 1/2", 2"	EVBD-7-12	8.60
8	Bolts SS (Plastic)	Stainless Steel	1", 1 1/4", 1 1/2", 2"	EVSB-8-12	5.65
8A	Bolts SS (Metal)	Stainless Steel	1", 1 1/4", 1 1/2", 2"	EVSB-8A-12	5.65
9	Lock Nut SS	Stainless Steel	1", 1 1/4", 1 1/2", 2"	EVBN-9-12	1.15
10	Bolt Cap Cover	Vinyl	1", 1 1/4", 1 1/2", 2"	EVBC-10-12	0.31
11	Gauge Port Cap	Nylon	1", 1 1/4", 1 1/2", 2"	EVGC-11	0.38
12	Bonnet Cap Cover	Vinyl	1", 1 1/4", 1 1/2", 2"	EVTC-12-B-12	1.00
	Bonnet Cap Cover	Vinyl	1", 1 1/4", 1 1/2", 2"	EVTC-12-R-12	1.00
	Bonnet Cap Cover	Vinyl	1", 1 1/4", 1 1/2", 2"	EVTC-12-Y-12	1.00
13	Union Seal O-Ring	EPDM	1", 1 1/4", 1 1/2", 2"	EVO-13-12-E	2.80
	Union Seal O-Ring	Viton	1", 1 1/4", 1 1/2", 2"	EVO-13-12-V	11.25
14	Union Nut	CPVC	1", 1 1/4", 1 1/2"	EVUN-14-CPVC-12	25.00
	Union Nut	CPVC	2"	EVUN-14-CPVC-20	30.00
	Union Nut	PP	1", 1 1/4", 1 1/2"	EVUN-14-PP-12	29.00
	Union Nut	PP	2"	EVUN-14-PP-20	28.00
	Union Nut	PVC	1", 1 1/4", 1 1/2"	EVUN-14-PVC-12	19.50
	Union Nut	PVC	2"	EVUN-14-PVC-20	19.50
	Union Nut	PVDF	1", 1 1/4", 1 1/2"	EVUN-14-PVDF-12	64.00
	Union Nut	PVDF	2"	EVUN-14-PVDF-20	64.00
15	Union Insert	CPVC (Corzan)	2"	EVUI-15-CPVC-BSPT-200	72.00
	Union Insert	CPVC (Corzan)	2"	EVUI-15-CPVC-NPT-200	72.00
	Union Insert	CPVC (Corzan)	2"	EVUI-15-CPVC-SOC-200	72.00
	Union Insert	CPVC (Corzan)	2"	EVUI-15-CPVC-SOC-M-200	72.00
	Union Insert	CPVC (Corzan)	1 1/2"	EVUI-15-CPVC-BSPT-150	68.00
	Union Insert	CPVC (Corzan)	1 1/2"	EVUI-15-CPVC-NPT-150	68.00
	Union Insert	CPVC (Corzan)	1 1/2"	EVUI-15-CPVC-SOC-150	68.00
	Union Insert	CPVC (Corzan)	1 1/2"	EVUI-15-CPVC-SOC-M-150	68.00
	Union Insert	CPVC (Corzan)	1 1/4"	EVUI-15-CPVC-BSPT-125	62.00
	Union Insert	CPVC (Corzan)	1 1/4"	EVUI-15-CPVC-NPT-125	62.00
	Union Insert	CPVC (Corzan)	1 1/4"	EVUI-15-CPVC-SOC-125	62.00
	Union Insert	CPVC (Corzan)	1 1/4"	EVUI-15-CPVC-SOC-M-125	62.00
	Union Insert	CPVC (Corzan)	1"	EVUI-15-CPVC-BSPT-110	60.00
	Union Insert	CPVC (Corzan)	1"	EVUI-15-CPVC-NPT-110	60.00
	Union Insert	CPVC (Corzan)	1"	EVUI-15-CPVC-SOC-110	60.00
	Union Insert	CPVC (Corzan)	1"	EVUI-15-CPVC-SOC-M-110	60.00
	Union Insert	Polypropylene	2"	EVUI-15-PP-BSPT-200	70.00
	Union Insert	Polypropylene	2"	EVUI-15-PP-NPT-200	70.00
	Union Insert	Polypropylene	2"	EVUI-15-PP-SOC-200	70.00
	Union Insert	Polypropylene	2"	EVUI-15-PP-SOC-M-200	70.00
	Union Insert	Polypropylene	1 1/2"	EVUI-15-PP-BSP-150	68.00
	Union Insert	Polypropylene	1 1/2"	EVUI-15-PP-NPT-150	68.00
	Union Insert	Polypropylene	1 1/2"	EVUI-15-PP-SOC-150	68.00
	Union Insert	Polypropylene	1 1/2"	EVUI-15-PP-SOC-M-150	68.00

Item #	Description	Material	Size	Part #	Price
	Union Insert	Polypropylene	1 ¼"	EVUI-15-PP-BSP-125	64.00
	Union Insert	Polypropylene	1 ¼"	EVUI-15-PP-NPT-125	64.00
	Union Insert	Polypropylene	1 ¼"	EVUI-15-PP-SOC-125	64.00
	Union Insert	Polypropylene	1 ¼"	EVUI-15-PP-SOC-M-125	64.00
	Union Insert	Polypropylene	1"	EVUI-15-PP-BSP-110	62.00
	Union Insert	Polypropylene	1"	EVUI-15-PP-NPT-110	62.00
	Union Insert	Polypropylene	1"	EVUI-15-PP-SOC-110	62.00
	Union Insert	Polypropylene	1"	EVUI-15-PP-SOC-M-110	62.00
	Union Insert	PVC	2"	EVUI-15-PVC-BSPT-200	55.00
	Union Insert	PVC	2"	EVUI-15-PVC-NPT-200	55.00
	Union Insert	PVC	2"	EVUI-15-PVC-SOC-200	55.00
	Union Insert	PVC	2"	EVUI-15-PVC-SOC-M-200	55.00
	Union Insert	PVC	1 ½"	EVUI-15-PVC-BSP-150	47.00
	Union Insert	PVC	1 ½"	EVUI-15-PVC-NPT-150	47.00
	Union Insert	PVC	1 ½"	EVUI-15-PVC-SOC-150	47.00
	Union Insert	PVC	1 ½"	EVUI-15-PVC-SOC-M-150	47.00
	Union Insert	PVC	1 ¼"	EVUI-15-PVC-BSP-125	43.00
	Union Insert	PVC	1 ¼"	EVUI-15-PVC-NPT-125	43.00
	Union Insert	PVC	1 ¼"	EVUI-15-PVC-SOC-125	43.00
	Union Insert	PVC	1 ¼"	EVUI-15-PVC-SOC-M-125	43.00
	Union Insert	PVC	1"	EVUI-15-PVC-BSP-110	40.00
	Union Insert	PVC	1"	EVUI-15-PVC-NPT-110	40.00
	Union Insert	PVC	1"	EVUI-15-PVC-SOC-110	40.00
	Union Insert	PVC	1"	EVUI-15-PVC-SOC-M-110	40.00
	Union Insert	PVDF	2"	EVUI-15-PVDF-BSPT-200	96.00
	Union Insert	PVDF	2"	EVUI-15-PVDF-NPT-200	96.00
	Union Insert	PVDF	2"	EVUI-15-PVDF-SOC-200	96.00
	Union Insert	PVDF	2"	EVUI-15-PVDF-SOC-M-200	96.00
	Union Insert	PVDF	1 ½"	EVUI-15-PVDF-BSP-150	88.00
	Union Insert	PVDF	1 ½"	EVUI-15-PVDF-NPT-150	88.00
	Union Insert	PVDF	1 ½"	EVUI-15-PVDF-SOC-150	88.00
	Union Insert	PVDF	1 ½"	EVUI-15-PVDF-SOC-M-150	88.00
	Union Insert	PVDF	1 ¼"	EVUI-15-PVDF-BSP-125	84.00
	Union Insert	PVDF	1 ¼"	EVUI-15-PVDF-NPT-125	84.00
	Union Insert	PVDF	1 ¼"	EVUI-15-PVDF-SOC-125	84.00
	Union Insert	PVDF	1 ¼"	EVUI-15-PVDF-SOC-M-125	84.00
	Union Insert	PVDF	1"	EVUI-15-PVDF-BSP-110	88.00
	Union Insert	PVDF	1"	EVUI-15-PVDF-NPT-110	88.00
	Union Insert	PVDF	1"	EVUI-15-PVDF-SOC-110	88.00
	Union Insert	PVDF	1"	EVUI-15-PVDF-SOC-M-110	88.00

Recommended Spare Parts Service Kit

CODE E

Part #	To Suit Model #	Description	Price
EV110E	ECO Valve 1"	EPDM Diaph. Spring, Top and Bottom Disc	172.00
EV110V	ECO Valve 1"	Viton Diaph., Spring, Top and Bottom Disc	172.00
EV110T	ECO Valve 1"	PTFE/EPDM Diaph., Spring, Top and Bottom Disc	172.00
EV125E	ECO Valve 1 1/4"	EPDM Diaph. Spring, Top and Bottom Disc	172.00
EV125V	ECO Valve 1 1/4"	Viton Diaph., Spring, Top and Bottom Disc	172.00
EV125T	ECO Valve 1 1/4"	PTFE/EPDM Diaph., Spring, Top and Bottom Disc	172.00
EV150E	ECO Valve 1 1/2"	EPDM Diaph. Spring, Top and Bottom Disc	172.00
EV150V	ECO Valve 1 1/2"	Viton Diaph., Spring, Top and Bottom Disc	172.00
EV150T	ECO Valve 1 1/2"	PTFE/EPDM Diaph., Spring, Top and Bottom Disc	172.00
EV200E	ECO Valve 2"	EPDM Diaph. Spring, Top and Bottom Disc	172.00
EV200V	ECO Valve 2"	Viton Diaph., Spring, Top and Bottom Disc	172.00
EV200T	ECO Valve 2"	PTFE/EPDM Diaph., Spring, Top and Bottom Disc	172.00

Body Configuration

