

# ECO VALVE

## Backpressure/Pressure Sustaining and Pressure Relief Valves 2024 CAD Price List

### Table of Contents

Page	Page
2	2
2	9
3	11
4	12
4	13
5	14
5	15
6	16
7	
8	

### HOW TO ORDER

e.g.: Part # **ECO50A-PVDF-V-NL**

**ECO - 50A - PVDF - V - NL**

**Back Pressure/Pressure Relief Valve, 2 Port Design**

**H = High Pressure**  
**T = High Temperature**  
**M = 20 – 230 psi Range**

**Sizes Available:**

25 = 8 DN = 1/4"  
38 = 10 DN = 3/8"  
50 = 15 DN = 1/2"  
55 = 15 DN = 1/2" (High Flow)  
75 = 20 DN = 3/4"  
100 = 25 DN = 1"  
110 = 25 DN = 1" (High Flow)  
125 = 32 DN = 1 1/4"  
150 = 40 DN = 1 1/2"  
200 = 50 DN = 2"  
220 = 50 DN = 2" (High Flow)  
300 = 75 DN = 3"  
400 = 100 DN = 4"

**Connections Available:**

A = NPT  
B = BSPT  
C = Socket weld N.A.  
D = Socket weld Metric  
E = Flanged ANSI  
F = Flanged DIN  
G = Union X NPT (plastic & S/S only)  
H = Union X BSPT (plastic & S/S only)  
I = Union X Socket N.A. (plastic only)  
J = Union X Socket Metric (plastic only)

**Options**

NL = gauge port – NPT (left to right flow)  
BL = gauge port – BSP (left to right flow)  
NR = gauge port – NPT (right to left flow)  
BR = gauge port – BSP (right to left flow)  
-S = optional 316S/S Top  
-A = optional Aluminum Top

**Diaphragms**

T = PTFE backed EPDM (standard on all valves)  
E = EPDM  
V = Viton

**Body Materials**

PVC = polyvinylchloride  
PP = polypropylene  
(unavailable for mid-range valves)  
PVDF = polyvinylidene fluoride  
CPVC = chlorinated polyvinyl chloride  
(Corzan)  
S/S = 316L Stainless Steel

**Note:** Viton "O" ring seals are standard on all union style valves. EPDM encapsulated rings are available for an additional charge. Please contact our sales order desk for pricing.

Distributed by:



**PRIMARY FLUID  
SYSTEMS INC.**

**TEL (905) 333-8743  
FAX (905) 333-8746**

**Toll Free 1-866-324-6422**

www.eco-valve.com E-Mail: Sales@evovalve.com



# ECO VALVE

## Back Pressure/Pressure Sustaining/Pressure Relief Valves

### Standard Features:

- ✓ CPVC (Corzan) high temperature top
- ✓ No moving parts in wetted chamber; superior choice for “dirty” fluid applications
- ✓ High flow capacity with lower pressure drop
- ✓ Optional diaphragm materials
- ✓ Sizes ¼” to 4” (8 DN to 100 DN)
- ✓ Field adjustable pressure range of 7-150 PSIG (48-1034 kPa)
- ✓ Configured for gauge port in either flow direction (on upstream side of valve)
- ✓ Available in 10 different configurations, threaded, socket, union and flanged
- ✓ Five materials of construction to choose from

Prices below are for 150# rated valves only.

### Valve Options/Documentation/Testing

**All Models** add suffix **-NL** to Valve model number (for left to right flow) plus \$56.00 **(Please specify NPT or BSPT)**

**All Models** add suffix **-NR** to Valve model number (for right to left flow) plus \$56.00 **(Please specify NPT or BSPT)**

**Diaphragm Options (EPDM, Viton, PVC)**

List Adder \$ N/C

**Certificate of Conformance**

Net Adder \$ 15.00 /per model

**Metallurgical Test Reports (Alloy wetted bodies)**

Net Adder \$ 45.00/per model

**Air Leak Test Report**

Net Adder \$ 40.00/per valve

**Hydrostatic Leak Test**

Net Adder \$ 180.00/per valve

**PMI Testing (Alloy wetted bodies)**

Net Adder \$ Call factory

Refer to Optional Equipment Price List for additional accessories (i.e. gauges) on page 9.

The above List Prices are for sale based on the terms described on page 16.

### Threaded/Socketweld Type Connections

(\*) = NPT = A  
 (\*) = BSPT = B

(\*) = Socketweld ASTM = C  
 (\*) = Socketweld DIN = D

Size Model	CODE A				
	-PVC	-CPVC	-PP	-PVDF	-SS
ECO-25 (*) ¼"	\$ 294.00	\$ 368.00	\$ 303.00	\$ 546.00	\$ 609.00
ECO-38 (*) 3/8"	\$ 323.00	\$ 386.00	\$ 336.00	\$ 681.00	\$ 638.00
ECO-50 (*) ½"	\$ 347.00	\$ 469.00	\$ 409.00	\$ 747.00	\$ 838.00
ECO -55 (*) ½" High Flow	\$ 482.00	\$ 606.00	\$ 501.00	\$ 913.00	\$ 1,015.00
ECO-75 (*) ¾"	\$ 524.00	\$ 641.00	\$ 539.00	\$ 1,138.00	\$ 1,063.00
ECO-100 (*) 1"	\$ 646.00	\$ 942.00	\$ 695.00	\$ 1,252.00	\$ 1,395.00
ECO-110 (*) 1" High Flow	\$ 1,040.00	\$ 1,153.00	\$ 1,114.00	\$ 1,674.00	\$ 1,987.00
ECO-125 (*) 1 ¼"	\$ 1,119.00	\$ 1,237.00	\$ 1,158.00	\$ 1,766.00	\$ 2,095.00
ECO-150 (*) 1 ½"	\$ 1,232.00	\$ 1,357.00	\$ 1,290.00	\$ 1,960.00	\$ 2,326.00
ECO-200 (*) 2"	\$ 1,601.00	\$ 2,306.00	\$ 1,761.00	\$ 3,410.00	\$ 3,564.00

## Union Type Connections

(\*) = NPT = G                      (\*) = Socketweld ASTM =I  
 (\*) = BSPT = H                    (\*) = Socketweld DIN =J

Size Model	CODE A				
	-PVC	-CPVC	-PP	-PVDF	-SS <sup>1</sup>
ECO-25 (*) 1/4" UNION	\$ 317.00	\$ 403.00	\$ 320.00	\$ 598.00	\$ 1,185.00
ECO-38 (*) 3/8" UNION	\$ 345.00	\$ 422.00	\$ 352.00	\$ 749.00	N/A
ECO-50 (*) 1/2" UNION	\$ 431.00	\$ 588.00	\$ 467.00	\$ 840.00	\$ 1,494.00
ECO -55 (*) 1/2" UNION High Flow	\$ 530.00	\$ 626.00	\$ 538.00	\$ 991.00	\$ 1,769.00
ECO-75 (*) 3/4" UNION	\$ 573.00	\$ 708.00	\$ 588.00	\$ 1,246.00	N/A
ECO-100 (*) 1" UNION	\$ 723.00	\$ 986.00	\$ 734.00	\$ 1,340.00	N/A
ECO-110 (*) 1" UNION High Flow	\$ 1,153.00	\$ 1,292.00	\$ 1,235.00	\$ 1,862.00	N/A
ECO-125 (*) 1 1/4" UNION	\$ 1,243.00	\$ 1,392.00	\$ 1,290.00	\$ 1,961.00	N/A
ECO-150 (*) 1 1/2" UNION	\$ 1,365.00	\$ 1,504.00	\$ 1,429.00	\$ 2,178.00	N/A
ECO-200 (*) 2" UNION	\$ 1,776.00	\$ 2,561.00	\$ 1,938.00	\$ 3,787.00	N/A

<sup>1</sup> Stainless Steel Union Connection only available in NPT and BSPT.

## Flanged, 150# ANSI

This series incorporates 150# socket-welded flanges.

(\*) = Flanged ANSI = E

Size Model	CODE A				
	-PVC	-CPVC	-PP	-PVDF	-SS
ECO-25 (*) 1/4" FLG'D	N/A	N/A	N/A	N/A	N/A
ECO-38 (*) 3/8" FLG'D	N/A	N/A	N/A	N/A	N/A
ECO-50 (*) 1/2" FLG'D	\$ 538.00	\$ 717.00	\$ 680.00	\$ 1,422.00	\$ 1,494.00
ECO -55 (*) 1/2" FLG'D High Flow	\$ 626.00	\$ 785.00	\$ 958.00	\$ 1,628.00	\$ 1,769.00
ECO-75 (*) 3/4" FLG'D	\$ 690.00	\$ 831.00	\$ 1,121.00	\$ 1,777.00	\$ 1,859.00
ECO-100 (*) 1" FLG'D	\$ 889.00	\$ 1,191.00	\$ 1,291.00	\$ 2,413.00	\$ 2,480.00
ECO-110 (*) 1" FLG'D High Flow	\$ 1,245.00	\$ 1,388.00	\$ 1,334.00	\$ 2,839.00	\$ 3,153.00
ECO-125 (*) 1 1/4" FLG'D	\$ 1,431.00	\$ 1,605.00	\$ 1,761.00	\$ 3,032.00	\$ 3,754.00
ECO-150 (*) 1 1/2" FLG'D	\$ 1,601.00	\$ 1,762.00	\$ 1,845.00	\$ 3,220.00	\$ 4,279.00
ECO-200 (*) 2" FLG'D	\$ 2,054.00	\$ 2,526.00	\$ 2,881.00	\$ 6,747.00	\$ 5,812.00

(\*) = Flanged DIN = F (Please contact factory for pricing.)

## High Pressure Series

Pressure setting range from 50 to 350 psig

This series incorporates a metallic top, viton diaphragm, high pressure spring with metallic top and bottom discs.

Viton diaphragm is the standard, optional diaphragm material available upon request.

The metallic top is made of aluminum, optional metallic materials available upon request.

### **CODING:**

eg: ECO Valve, Back Pressure, High Pressure valve, ¼”npt, 316 S/S wetted material, the Part # ECOH-25A-S/S

See ordering codes on first page for optional materials, connections and styles.

For flanged or socket weld connections please contact factory for pricing.

- (\*) = NPT = A
- (\*) = BSPT = B
- (\*) = Socketweld ASTM =C
- (\*) = Socketweld DIN =D
- (\*) = Flanged ANSI = E
- (\*) = Flanged DIN = F

### **CODE A**

Size Model	-S/S	-ALL20	-HAST
ECO-25 (*) ¼”	\$ 985.00	C/F	C/F
ECO-38 (*) 3/8”	\$ 1,015.00	C/F	C/F
ECO-50 (*) ½”	\$ 1,078.00	C/F	C/F
ECO-55 (*) ½” High Flow	\$ 1,201.00	C/F	C/F
ECO-75 (*) ¾”	\$ 1,251.00	C/F	C/F
ECO-100 (*) 1”	\$ 1,633.00	C/F	C/F
ECO-110 (*) 1” High Flow	\$ 2,223.00	C/F	C/F
ECO-125 (*) 1 ¼”	\$ 2,331.00	C/F	C/F
ECO-150 (*) 1 ½”	\$ 2,822.00	C/F	C/F
ECO-200 (*) 2”	\$ 4,094.00	C/F	C/F

C/F = Consult Factory

## Optional Tops Adder

Model + Code	ECO-25 (*) ¼” ECO-38 (*) 3/8” ECO-50 (*) ½”	ECO-55 (*) ½” High Flow ECO-75 (*) ¾” ECO-100 (*) 1”	ECO-110 (*) 1” High Flow ECO-125 (*) 1 ¼” ECO-150 (*) 1 ½” ECO-200 (*) 2”
316S/S = -S	\$ 212.00	\$ 274.00	\$ 340.00
Aluminum = -A	\$ 107.00	\$ 129.00	\$ 186.00

## High Temperature Series

This series is designed for temperature applications that exceed the maximum range of 140°F (60°C) to 190°F (88°C) rating of our standard valves with CPVC tops. These valves come standard with an aluminum top, viton diaphragm and metallic spring discs.

This model valve has a maximum working temperature of 350°F (177°C).

### CODING:

eg: ECO Valve, Back Pressure, High Temperature valve, 1/2"npt, 316 S/S wetted material, the Part # ECOT-50A-S/S

See ordering codes on first page for optional materials, connections and styles.

For flanged or socket weld connections please contact factory for pricing.

- (\*) = NPT = A
- (\*) = BSPT = B
- (\*) = Socketweld ASTM =C
- (\*) = Socketweld DIN =D
- (\*) = Flanged ANSI = E
- (\*) = Flanged DIN = F

Size Model	CODE A		
	-S/S	-ALL20	-HAST
ECOT-25 (*) 1/4"	\$ 949.00	C/F	C/F
ECOT-38 (*) 3/8"	\$ 995.00	C/F	C/F
ECOT-50 (*) 1/2"	\$ 1,041.00	C/F	C/F
ECOT -55 (*) 1/2" High Flow	\$ 1,159.00	C/F	C/F
ECOT-75 (*) 3/4"	\$ 1,209.00	C/F	C/F
ECOT-100 (*) 1"	\$ 1,567.00	C/F	C/F
ECOT-110 (*) 1" High Flow	\$ 1,775.00	C/F	C/F
ECOT-125 (*) 1 1/4"	\$ 2,128.00	C/F	C/F
ECOT-150 (*) 1 1/2"	\$ 2,736.00	C/F	C/F
ECOT-200 (*) 2"	\$ 4,251.00	C/F	C/F

C/F = Consult Factory

## Mid-Range Non Metallic

20 – 230 psig Range

Available in PVC, CPVC, and PVDF – List Adder \$ 78.00

### Temperature Correction Factors: Thermoplastics

**Temperature Effects:** Thermoplastics and thermosets will decrease in tensile strength as the temperature increases: therefore, the working pressure must be reduced accordingly. The following factors will apply:

#### Example:

Maximum Pressure for PVDF valve at 280°F (138°C)

Factor = 0.16 x 150psig = 24psig max. pressure

Factor = 0.16 x 1034kPa = 165.44kPa max. pressure

The maximum pressure rating for valves regardless of size is 150 PSIG (1034 kPa) at 73° F (22°C)

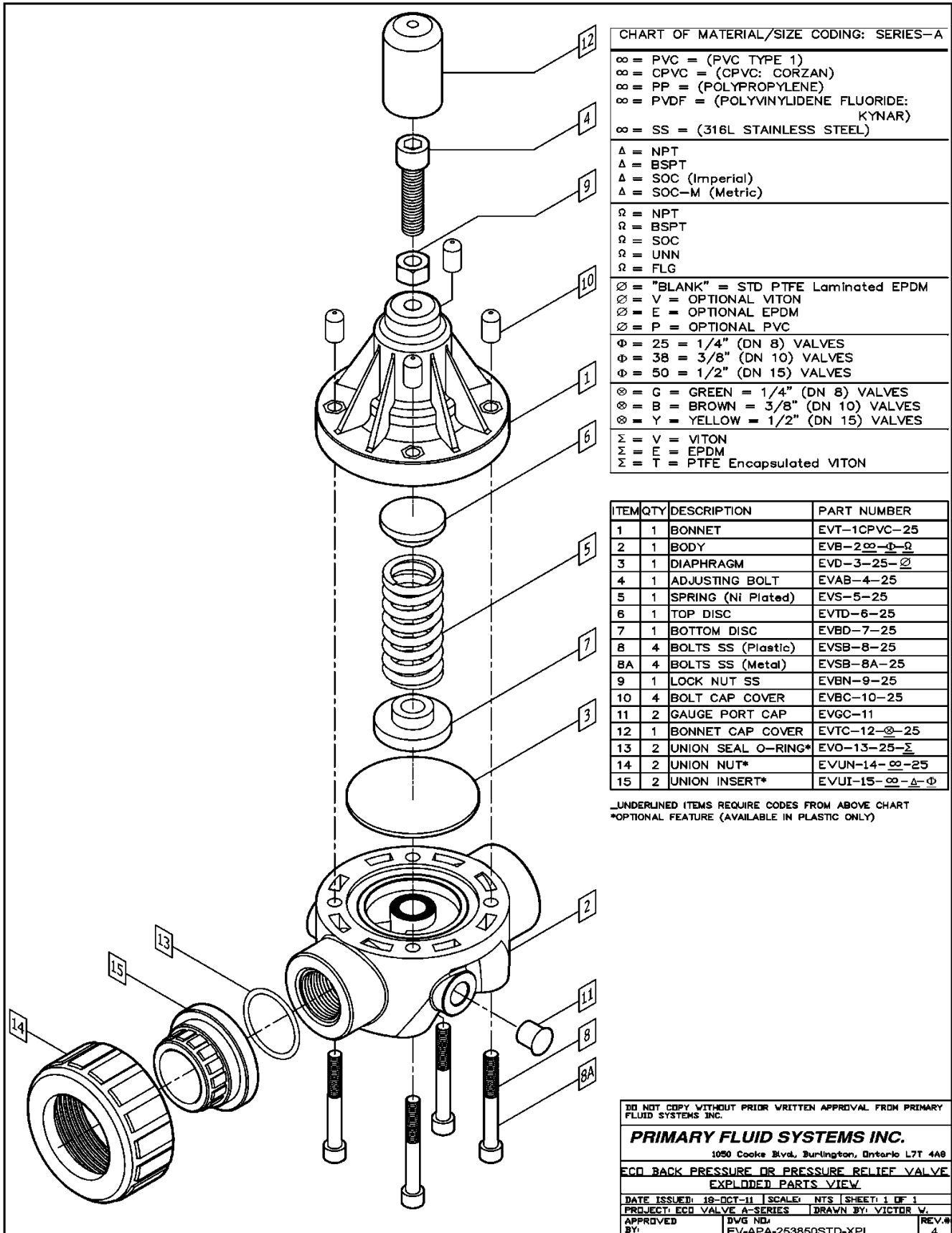
**NR** = not recommended

Primary Fluid Systems, Inc. takes no responsibility for the enclosed data.

Operating Temperatures		{Factors}			
F	C	PVC	CPVC	PP	PVDF
70	21	1.00	1.00	1.00	1.00
80	27	1.00	1.00	1.00	1.00
90	32	1.00	1.00	1.00	1.00
100	38	.90	1.00	1.00	1.00
110	43	.83	1.00	.91	1.00
115	46	.75	1.00	.87	1.00
120	49	.66	1.00	.83	1.00
125	52	.58	.97	.79	1.00
130	54	.50	.95	.75	1.00
140	60	.33	.90	.66	1.00
150	66	NR	.80	.60	.97
160	71	NR	.70	.53	.93
170	77	NR	.60	.43	.86
180	82	NR	.50	.33	.80
200	93	NR	.33	NR	.66
210	99	NR	NR	NR	.60
240	116	NR	NR	NR	.40
280	138	NR	NR	NR	.16

# Exploded View – Back Pressure / Pressure Relief Valve

1/4" (ECO-25), 3/8" (ECO-38), 1/2" (ECO-50) ECO Valves



**CHART OF MATERIAL/SIZE CODING: SERIES-A**

∞ = PVC = (PVC TYPE 1)
∞ = CPVC = (CPVC: CORZAN)
∞ = PP = (POLYPROPYLENE)
∞ = PVDF = (POLYVINYLIDENE FLUORIDE: KYNAR)
∞ = SS = (316L STAINLESS STEEL)
Δ = NPT
Δ = BSPT
Δ = SOC (Imperial)
Δ = SOC-M (Metric)
Ω = NPT
Ω = BSPT
Ω = SOC
Ω = UNN
Ω = FLG
∅ = "BLANK" = STD PTFE Laminated EPDM
∅ = V = OPTIONAL VITON
∅ = E = OPTIONAL EPDM
∅ = P = OPTIONAL PVC
Φ = 25 = 1/4" (DN 8) VALVES
Φ = 38 = 3/8" (DN 10) VALVES
Φ = 50 = 1/2" (DN 15) VALVES
⊗ = G = GREEN = 1/4" (DN 8) VALVES
⊗ = B = BROWN = 3/8" (DN 10) VALVES
⊗ = Y = YELLOW = 1/2" (DN 15) VALVES
Σ = V = VITON
Σ = E = EPDM
Σ = T = PTFE Encapsulated VITON

ITEM	QTY	DESCRIPTION	PART NUMBER
1	1	BONNET	EVT-1CPVC-25
2	1	BODY	EVB-2∞-Φ-Ω
3	1	DIAPHRAGM	EVD-3-25-∅
4	1	ADJUSTING BOLT	EVAB-4-25
5	1	SPRING (Ni Plated)	EVS-5-25
6	1	TOP DISC	EVTD-6-25
7	1	BOTTOM DISC	EVBD-7-25
8	4	BOLTS SS (Plastic)	EVS8-8-25
8A	4	BOLTS SS (Metal)	EVS8-8A-25
9	1	LOCK NUT SS	EVBN-9-25
10	4	BOLT CAP COVER	EVBC-10-25
11	2	GAUGE PORT CAP	EVGC-11
12	1	BONNET CAP COVER	EVTC-12-∅-25
13	2	UNION SEAL O-RING*	EVO-13-25-Σ
14	2	UNION NUT*	EVUN-14-∞-25
15	2	UNION INSERT*	EVUI-15-∞-Δ-Φ

UNDERLINED ITEMS REQUIRE CODES FROM ABOVE CHART  
 \*OPTIONAL FEATURE (AVAILABLE IN PLASTIC ONLY)

DO NOT COPY WITHOUT PRIOR WRITTEN APPROVAL FROM PRIMARY FLUID SYSTEMS INC.

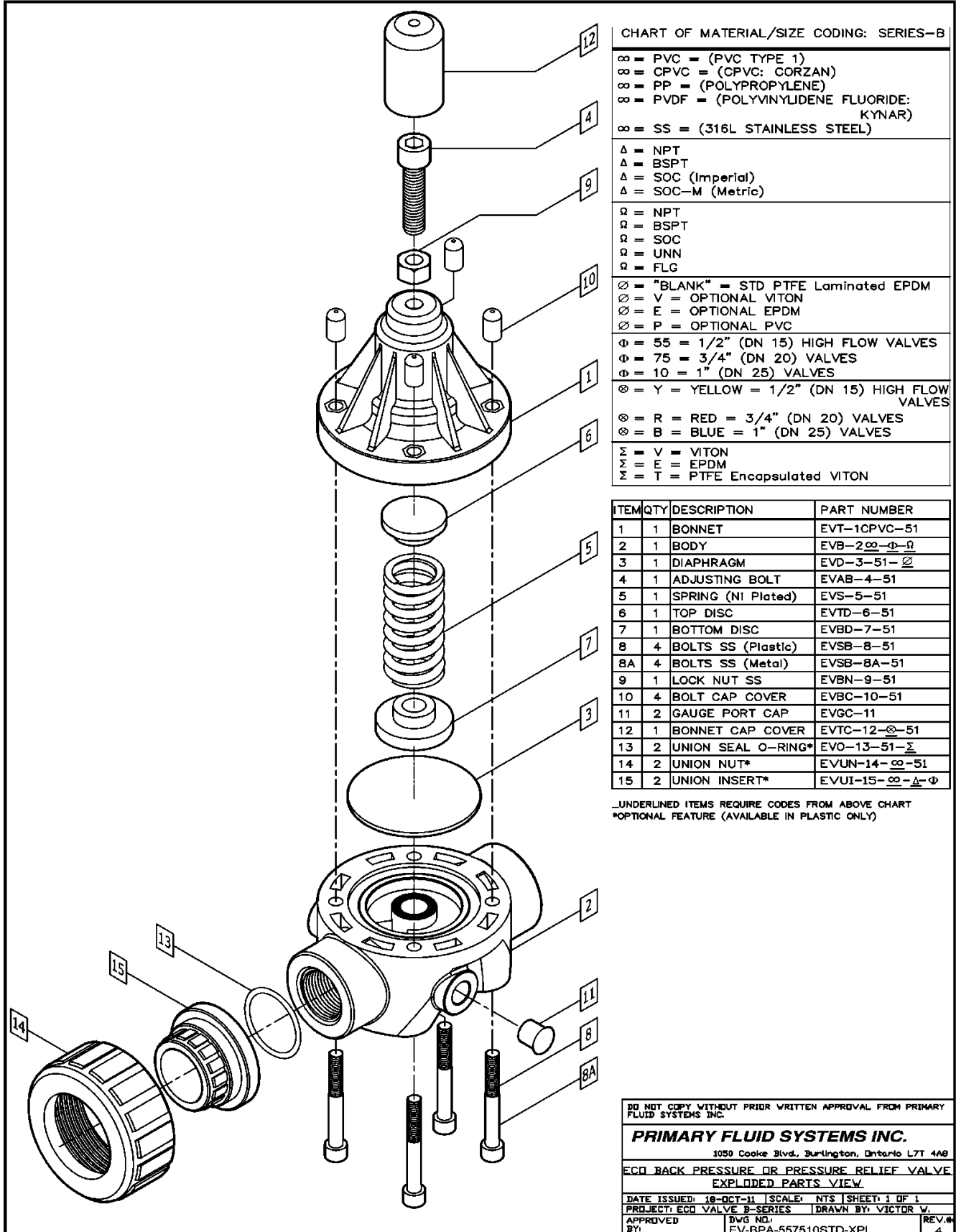
**PRIMARY FLUID SYSTEMS INC.**  
 1050 Cooke Blvd, Burlington, Ontario L7T 4A8

**ECO BACK PRESSURE OR PRESSURE RELIEF VALVE  
 EXPLODED PARTS VIEW**

DATE ISSUED: 18-OCT-11 | SCALE: NTS | SHEET: 1 OF 1  
 PROJECT: ECO VALVE A-SERIES | DRAWN BY: VICTOR W.  
 APPROVED BY: DWG NO: EV-APA-253850STD-XPL | REV.# 4

# Exploded View – Back Pressure / Pressure Relief Valve

1/2" High Flow (ECO-55), 3/4" (ECO-75), 1" (ECO-100) ECO Valves



**CHART OF MATERIAL/SIZE CODING: SERIES-B**

- ∞ = PVC = (PVC TYPE 1)
  - ∞ = CPVC = (CPVC: CORZAN)
  - ∞ = PP = (POLYPROPYLENE)
  - ∞ = PVDF = (POLYVINYLIDENE FLUORIDE: KYNAR)
  - ∞ = SS = (316L STAINLESS STEEL)
- Δ = NPT
  - Δ = BSPT
  - Δ = SOC (Imperial)
  - Δ = SOC-M (Metric)
- Ω = NPT
  - Ω = BSPT
  - Ω = SOC
  - Ω = UNN
  - Ω = FLG
- ⊗ = "BLANK" = STD PTFE Laminated EPDM
  - ⊗ = V = OPTIONAL VITON
  - ⊗ = E = OPTIONAL EPDM
  - ⊗ = P = OPTIONAL PVC
- Φ = 55 = 1/2" (DN 15) HIGH FLOW VALVES
  - Φ = 75 = 3/4" (DN 20) VALVES
  - Φ = 10 = 1" (DN 25) VALVES
- ⊗ = Y = YELLOW = 1/2" (DN 15) HIGH FLOW VALVES
  - ⊗ = R = RED = 3/4" (DN 20) VALVES
  - ⊗ = B = BLUE = 1" (DN 25) VALVES
- Σ = V = VITON
  - Σ = E = EPDM
  - Σ = T = PTFE Encapsulated VITON

ITEM	QTY	DESCRIPTION	PART NUMBER
1	1	BONNET	EVT-1CPVC-51
2	1	BODY	EVB-2∞-Φ-Ω
3	1	DIAPHRAGM	EVD-3-51-⊗
4	1	ADJUSTING BOLT	EVB-4-51
5	1	SPRING (NI Plated)	EVS-5-51
6	1	TOP DISC	EVTD-6-51
7	1	BOTTOM DISC	EVBD-7-51
8	4	BOLTS SS (Plastic)	EVS-8-51
8A	4	BOLTS SS (Metal)	EVS-8A-51
9	1	LOCK NUT SS	EVBN-9-51
10	4	BOLT CAP COVER	EVBC-10-51
11	2	GAUGE PORT CAP	EVGC-11
12	1	BONNET CAP COVER	EVTC-12-∞-51
13	2	UNION SEAL O-RING*	EVO-13-51-Σ
14	2	UNION NUT*	EVUN-14-∞-51
15	2	UNION INSERT*	EVUI-15-∞-Δ-Φ

UNDERLINED ITEMS REQUIRE CODES FROM ABOVE CHART  
 \*OPTIONAL FEATURE (AVAILABLE IN PLASTIC ONLY)

DO NOT COPY WITHOUT PRIOR WRITTEN APPROVAL FROM PRIMARY FLUID SYSTEMS INC.

**PRIMARY FLUID SYSTEMS INC.**  
 1050 Cooke Blvd., Burlington, Ontario L7T 4A8

**ECO BACK PRESSURE OR PRESSURE RELIEF VALVE  
 EXPLODED PARTS VIEW**

DATE ISSUED: 18-OCT-11 | SCALE: NTS | SHEET: 1 OF 1  
 PROJECT: ECO VALVE B-SERIES | DRAWN BY: VICTOR V.  
 APPROVED BY: DWG NO.: EV-BPA-557510STD-XPL | REV.#: 4

# Exploded View – Back Pressure / Pressure Relief Valve

## ECO-110 (High Flow), ECO-125, ECO-150, ECO-200

**CHART OF MATERIAL/SIZE CODING: SERIES-C**

∅ = PVC = (PVC TYPE 1)  
 ∅ = CPVC = (CPVC: CORZAN)  
 ∅ = PP = (POLYPROPYLENE)  
 ∅ = PVDF = (POLYVINYLIDENE FLUORIDE: KYNAR)  
 ∅ = SS = (316L STAINLESS STEEL)

▲ = NPT  
 ▲ = BSPT  
 ▲ = SOC (Imperial)  
 ▲ = SOC-M (Metric)

□ = NPT  
 □ = BSPT  
 □ = SOC  
 □ = UNN  
 □ = FLG

∅ = "BLANK" = STD PTFE Laminated EPDM  
 ∅ = V = OPTIONAL VITON  
 ∅ = E = OPTIONAL EPDM  
 ∅ = P = OPTIONAL PVC

∅ = 110 = 1" (DN 25) HIGH FLOW VALVES  
 ∅ = 125 = 1-1/4" (DN 32) VALVES  
 ∅ = 150 = 1-1/2" (DN 40) VALVES  
 ∅ = 200 = 2" (DN 50) VALVES

∅ = B = BLUE = 1" (DN 25) VALVES  
 ∅ = S = SILVER = 1-1/4" (DN 32) VALVES  
 ∅ = BL = BLACK = 1-1/2" (DN 40) VALVES  
 ∅ = W = WHITE = 2" (DN 50) VALVES

Σ = V = VITON  
 Σ = E = EPDM  
 Σ = T = PTFE Encapsulated VITON

ITEM	QTY	DESCRIPTION	PART NUMBER
1	1	BONNET	EVT-10PVC-12
2	1	BODY	EVB-2∅-∅-□
3	1	DIAPHRAGM	EVD-3-12-∅
4	1	ADJUSTING BOLT	EVAB-4-12
5	1	SPRING (Ni Plated)	EVS-5-12
6	1	TOP DISC	EVTD-6-12
7	1	BOTTOM DISC	EVBD-7-12
8	4	BOLTS SS (Plastic)	EVSB-8-12
8A	4	BOLTS SS (Metal)	EVSB-8A-12
9	1	LOCK NUT SS	EVBN-9-12
10	4	BOLT CAP COVER	EVBC-10-12
11	2	GAUGE PORT CAP	EVGC-11
12	1	BONNET CAP COVER	EVTC-12-∅-12
13	2	UNION SEAL O-RING*	EVO-13-12-Σ
14	2	UNION NUT*	EVUN-14-∅-12
15	2	UNION INSERT*	EVUI-15-∅-▲-∅

\*UNDERLINED ITEMS REQUIRE CODES FROM ABOVE CHART  
 \*OPTIONAL FEATURE (AVAILABLE IN PLASTIC ONLY)

DO NOT COPY WITHOUT PRIOR WRITTEN APPROVAL FROM PRIMARY FLUID SYSTEMS INC.

**PRIMARY FLUID SYSTEMS INC.**  
 1050 Cooke Blvd., Burlington, Ontario L7T 4A8

ECO BACK PRESSURE & PRESSURE RELIEF VALVE - 1", 1-1/4", 1-1/2", 2" (EXPLODED VIEW)

DATE ISSUED: 10-JAN-12 | SCALE: NTS | SHEET: 1 OF 1  
 PROJECT: C-SERIES ECO VALVE | DRAWN BY: VICTOR W.

APPROVED BY: [Signature] | DWG NO: C-SER ECOVALVE-EXP | REV.#: 1



# ECO VALVE PARTS SUGGESTED PRICE LIST

ECO-25, ECO-38, ECO-50, ECO-55, ECO-75, ECO 100

CODE E

Key	PRODUCT	PART #		PART #	
		25, 38, 50	PRICE	55, 75, 100	PRICE
1	Bonnet	EVT-1CPVC-25	134.00	EVT-1CPVC-51	176.00
	Bonnet	EVT-1SS-25	305.00	EVT-1SS-51	347.00
	Bonnet	EVT-1AL-25	123.00	EVT-1AL-51	168.00
2	Body	For Eco Valve body pricing, please see the Eco Valve Parts Pricing Catalogue.			
3	Diaphragm	EVD-3-25-E	43.00	EVD-3-51-E	98.00
	Diaphragm	EVD-3-25-V	43.00	EVD-3-51-V	98.00
	Diaphragm	EVD-3-25	43.00	EVD-3-51	98.00
4	Adjusting Bolt	EVAB-4-25	2.80	EVAB-4-51	2.75
5	Spring	EVS-5-25	30.00	EVS-5-51	54.00
6	Top Disc	EVTD-6-25	8.10	EVTD-6-51	8.10
7	Bottom Disc	EVBD-7-25	10.75	EVBD-7-51	10.75
8	Bolts (Plastic)	EVSB-8-25	1.10	EVSB-8-51	3.10
8A	Bolts (Metal)	EVSB-8A-25	1.10	EVSB-8A-51	3.10
9	Nuts	EVBN-9-25	0.95	EVBN-9-51	0.95
10	Bolt Cap	EVBC-10-25	0.47	EVBC-10-51	0.40
11	Gauge Port Cap	EVGC-11	0.47	EVGC-11	0.47
12	Bonnet Cover Cap	EVTC-12-BK-25	1.30	EVTC-12-B-51	1.30
	Bonnet Cover Cap	EVTC-12-BR-25	1.30	EVTC-12-R-51	1.30
	Bonnet Cover Cap	EVTC-12-G-25	1.30	EVTC-12-Y-51	1.30
	Bonnet Cover Cap	EVTC-12-Y-25	1.30		
13	Union Seal O-Ring	EVO-13-25-E	1.60	EVO-13-51-E	1.80
	Union Seal O-Ring	EVO-13-25-V	3.25	EVO-13-51-V	3.85
14	Union Nut	EVUN-14-CPVC-25	12.50	EVUN-14-CPVC-51	14.25
	Union Nut	EVUN-14-PP-25	12.50	EVUN-14-PP-51	17.00
	Union Nut	EVUN-14-PVC-25	7.10	EVUN-14-PVC-51	8.60
	Union Nut	EVUN-14-PVDF-25	25.00	EVUN-14-PVDF-51	28.00
15	Union Insert	EVUI-15-CPVC-BSP-50	11.25	EVUI-15-CPVC-BSPT-10	14.25
	Union Insert	EVUI-15-CPVC-NPT-50	11.25	EVUI-15-CPVC-NPT-10	14.25
	Union Insert	EVUI-15-CPVC-SOC-50	5.95	EVUI-15-CPVC-SOC-10	6.25
	Union Insert	EVUI-15-CPVC-SOC-M-50	5.95	EVUI-15-CPVC-SOC-M-10	6.25
	Union Insert	EVUI-15-CPVC-BSPT-38	11.25	EVUI-15-CPVC-BSPT-75	12.50
	Union Insert	EVUI-15-CPVC-NPT-38	11.25	EVUI-15-CPVC-NPT-75	12.50
	Union Insert	EVUI-15-CPVC-SOC-38	5.95	EVUI-15-CPVC-SOC-75	6.25
	Union Insert	EVUI-15-CPVC-SOC-M-38	5.95	EVUI-15-CPVC-SOC-M-75	6.25
	Union Insert	EVUI-15-CPVC-BSPT-25	10.75	EVUI-15-CPVC-BSPT-55	10.25
	Union Insert	EVUI-15-CPVC-NPT-25	10.75	EVUI-15-CPVC-NPT-55	10.25
	Union Insert	EVUI-15-CPVC-SOC-25	5.65	EVUI-15-CPVC-SOC-55	5.05
	Union Insert	EVUI-15-CPVC-SOC-M-25	5.65	EVUI-15-CPVC-SOC-M-55	5.05
	Union Insert	EVUI-15-PP-BSP-50	12.50	EVUI-15-PP-BSPT-10	10.75
	Union Insert	EVUI-15-PP-NPT-50	12.50	EVUI-15-PP-NPT-10	10.75
	Union Insert	EVUI-15-PP-SOC-50	5.65	EVUI-15-PP-SOC-10	10.25
	Union Insert	EVUI-15-PP-SOC-M-50	5.65	EVUI-15-PP-SOC-M-10	10.25
	Union Insert	EVUI-15-PP-BSPT-38	13.75	EVUI-15-PP-BSP-75	8.60
	Union Insert	EVUI-15-PP-NPT-38	13.75	EVUI-15-PP-NPT-75	8.60
	Union Insert	EVUI-15-PP-SOC-38	5.65	EVUI-15-PP-SOC-75	8.60
	Union Insert	EVUI-15-PP-SOC-M-38	5.65	EVUI-15-PP-SOC-M-75	8.60
	Union Insert	EVUI-15-PP-BSPT-25	13.75	EVUI-15-PP-BSP-55	6.85
	Union Insert	EVUI-15-PP-NPT-25	13.75	EVUI-15-PP-NPT-55	6.85
	Union Insert	EVUI-15-PP-SOC-25	5.65	EVUI-15-PP-SOC-55	6.85
	Union Insert	EVUI-15-PP-SOC-M-25	5.65	EVUI-15-PP-SOC-M-55	6.85
	Union Insert	EVUI-15-PVC-BSP-50	6.55	EVUI-15-PVC-BSPT-10	9.20
	Union Insert	EVUI-15-PVC-NPT-50	6.55	EVUI-15-PVC-NPT-10	9.20
	Union Insert	EVUI-15-PVC-SOC-50	3.55	EVUI-15-PVC-SOC-10	6.25
	Union Insert	EVUI-15-PVC-SOC-M-50	3.55	EVUI-15-PVC-SOC-M-10	6.25
	Union Insert	EVUI-15-PVC-BSPT-38	8.35	EVUI-15-PVC-BSP-75	7.10
	Union Insert	EVUI-15-PVC-NPT-38	8.35	EVUI-15-PVC-NPT-75	7.10

Key	PRODUCT	PART #		PART #	
		25, 38, 50	PRICE	55, 75, 100	PRICE
	Union Insert	EVUI-15-PVC-SOC-38	3.55	EVUI-15-PVC-SOC-75	5.05
	Union Insert	EVUI-15-PVC-SOC-M-38	3.55	EVUI-15-PVC-SOC-M-75	5.05
	Union Insert	EVUI-15-PVC-BSPT-25	8.10	EVUI-15-PVC-BSP-55	6.85
	Union Insert	EVUI-15-PVC-NPT-25	8.10	EVUI-15-PVC-NPT-55	6.85
	Union Insert	EVUI-15-PVC-SOC-25	3.55	EVUI-15-PVC-SOC-55	4.25
	Union Insert	EVUI-15-PVC-SOC-M-25	3.55	EVUI-15-PVC-SOC-M-55	4.25
	Union Insert	EVUI-15-PVDF-BSP-50	25.00	EVUI-15-PVDF-BSPT-10	33.00
	Union Insert	EVUI-15-PVDF-NPT-50	25.00	EVUI-15-PVDF-NPT-10	33.00
	Union Insert	EVUI-15-PVDF-SOC-50	21.00	EVUI-15-PVDF-SOC-10	28.00
	Union Insert	EVUI-15-PVDF-SOC-M-50	21.00	EVUI-15-PVDF-SOC-M-10	28.00
	Union Insert	EVUI-15-PVDF-BSPT-38	25.00	EVUI-15-PVDF-BSP-75	33.00
	Union Insert	EVUI-15-PVDF-NPT-38	25.00	EVUI-15-PVDF-NPT-75	33.00
	Union Insert	EVUI-15-PVDF-SOC-38	19.50	EVUI-15-PVDF-SOC-75	28.00
	Union Insert	EVUI-15-PVDF-SOC-M-38	19.50	EVUI-15-PVDF-SOC-M-75	28.00
	Union Insert	EVUI-15-PVDF-BSPT-25	25.00	EVUI-15-PVDF-BSP-55	28.00
	Union Insert	EVUI-15-PVDF-NPT-25	25.00	EVUI-15-PVDF-NPT-55	28.00
	Union Insert	EVUI-15-PVDF-SOC-25	21.00	EVUI-15-PVDF-SOC-55	22.00
	Union Insert	EVUI-15-PVDF-SOC-M-25	21.00	EVUI-15-PVDF-SOC-M-55	22.00

# ECO VALVE PARTS SUGGESTED PRICE LIST

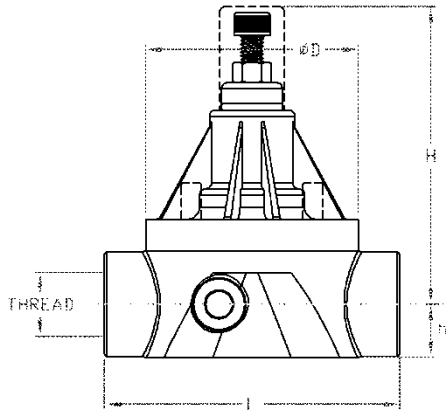
ECO-110, ECO-125, ECO-150, ECO-200

**CODE E**

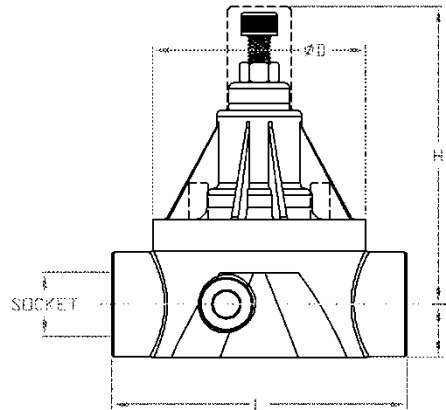
Key	PRODUCT	PART #	PRICE	PART #	PRICE
		<b>110, 125, 150, 200*</b>		<b>110, 125, 150, 200*</b>	
1	Bonnet	EVT-1CPVC-12	231.00	EVT-1SS-12	509.00
	Bonnet	EVT-1AL-12	248.00		
2	Body	For Eco Valve body pricing, please see the Eco Valve Parts Pricing Catalogue.			
3	Diaphragm	EVD-3-12-E	123.00	EVD-3-12-V	123.00
	Diaphragm			EVD-3-12	123.00
4	Adjusting Bolt	EVAB-4-12	3.55		
5	Spring	EVS-5-12	65.00		
6	Top Disc	EVTD-6-12	8.60		
7	Bottom Disc	EVBD-7-12	11.25		
8	Bolts (Plastic)	EVS-8-12	7.10		
8A	Bolts (Metal)	EVS-8A-12	7.10		
9	Nuts	EVBN-9-12	1.35		
10	Bolt Cap	EVBC-10-12	0.39		
11	Gauge Port Cap	EVGC-11	0.47		
12	Bonnet Cover Cap	EVTC-12-B-12	1.30	EVTC-12-Y-12	1.30
	Bonnet Cover Cap	EVTC-12-R-12	1.30		
13	Union Seal O-Ring	EVO-13-12-E	3.55	EVO-13-12-V	14.25
14	Union Nut	EVUN-14-CPVC-12	30.00	EVUN-14-PVC-12	23.00
	Union Nut	EVUN-14-CPVC-20*	38.00	EVUN-14-PVC-20*	23.00
	Union Nut	EVUN-14-PP-12	33.00	EVUN-14-PVDF-12	77.00
	Union Nut	EVUN-14-PP-20*	33.00	EVUN-14-PVDF-20*	75.00
15	Union Insert	EVUI-15-CPVC-BSPT-200	90.00	EVUI-15-PP-BSPT-200	85.00
	Union Insert	EVUI-15-CPVC-NPT-200	90.00	EVUI-15-PP-NPT-200	85.00
	Union Insert	EVUI-15-CPVC-SOC-200	90.00	EVUI-15-PP-SOC-200	85.00
	Union Insert	EVUI-15-CPVC-SOC-M-200	90.00	EVUI-15-PP-SOC-M-200	85.00
	Union Insert	EVUI-15-CPVC-BSPT-150	82.00	EVUI-15-PP-BSPT-150	82.00
	Union Insert	EVUI-15-CPVC-NPT-150	82.00	EVUI-15-PP-NPT-150	82.00
	Union Insert	EVUI-15-CPVC-SOC-150	82.00	EVUI-15-PP-SOC-150	82.00
	Union Insert	EVUI-15-CPVC-SOC-M-150	82.00	EVUI-15-PP-SOC-M-150	82.00
	Union Insert	EVUI-15-CPVC-BSPT-125	73.00	EVUI-15-PP-BSPT-125	77.00
	Union Insert	EVUI-15-CPVC-NPT-125	73.00	EVUI-15-PP-NPT-125	77.00
	Union Insert	EVUI-15-CPVC-SOC-125	73.00	EVUI-15-PP-SOC-125	77.00
	Union Insert	EVUI-15-CPVC-SOC-M-125	73.00	EVUI-15-PP-SOC-M-125	77.00
	Union Insert	EVUI-15-CPVC-BSPT-110	70.00	EVUI-15-PP-BSPT-110	72.00
	Union Insert	EVUI-15-CPVC-NPT-110	70.00	EVUI-15-PP-NPT-110	72.00
	Union Insert	EVUI-15-CPVC-SOC-110	70.00	EVUI-15-PP-SOC-110	72.00
	Union Insert	EVUI-15-CPVC-SOC-M-110	70.00	EVUI-15-PP-SOC-M-110	72.00
	Union Insert	EVUI-15-PVC-BSPT-200	68.00	EVUI-15-PVDF-BSPT-200	115.00
	Union Insert	EVUI-15-PVC-NPT-200	68.00	EVUI-15-PVDF-NPT-200	115.00
	Union Insert	EVUI-15-PVC-SOC-200	68.00	EVUI-15-PVDF-SOC-200	115.00
	Union Insert	EVUI-15-PVC-SOC-M-200	68.00	EVUI-15-PVDF-SOC-M-200	115.00
	Union Insert	EVUI-15-PVC-BSP-150	57.00	EVUI-15-PVDF-BSPT-150	106.00
	Union Insert	EVUI-15-PVC-NPT-150	57.00	EVUI-15-PVDF-NPT-150	106.00
	Union Insert	EVUI-15-PVC-SOC-150	57.00	EVUI-15-PVDF-SOC-150	106.00
	Union Insert	EVUI-15-PVC-SOC-M-150	57.00	EVUI-15-PVDF-SOC-M-150	106.00
	Union Insert	EVUI-15-PVC-BSP-125	53.00	EVUI-15-PVDF-BSPT-125	101.00
	Union Insert	EVUI-15-PVC-NPT-125	53.00	EVUI-15-PVDF-NPT-125	101.00
	Union Insert	EVUI-15-PVC-SOC-125	53.00	EVUI-15-PVDF-SOC-125	101.00
	Union Insert	EVUI-15-PVC-SOC-M-125	53.00	EVUI-15-PVDF-SOC-M-125	101.00
	Union Insert	EVUI-15-PVC-BSPT-110	47.00	EVUI-15-PVDF-BSPT-110	99.00
	Union Insert	EVUI-15-PVC-NPT-110	47.00	EVUI-15-PVDF-NPT-110	99.00
	Union Insert	EVUI-15-PVC-SOC-110	47.00	EVUI-15-PVDF-SOC-110	99.00
	Union Insert	EVUI-15-PVC-SOC-M-110	47.00	EVUI-15-PVDF-SOC-M-110	99.00

# Back Pressure Valves ( Pressure Retaining Valves)

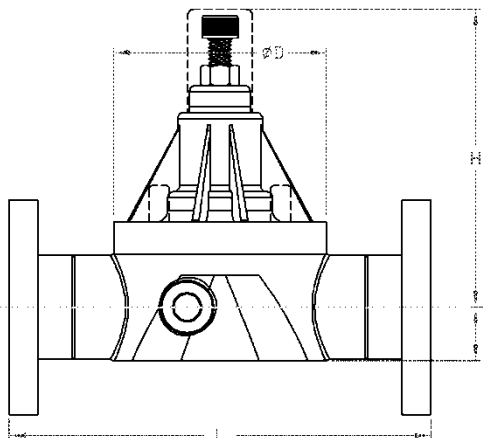
Body Configuration Model ECO-25                      Dimensions  
 ECO-38  
 ECO-50



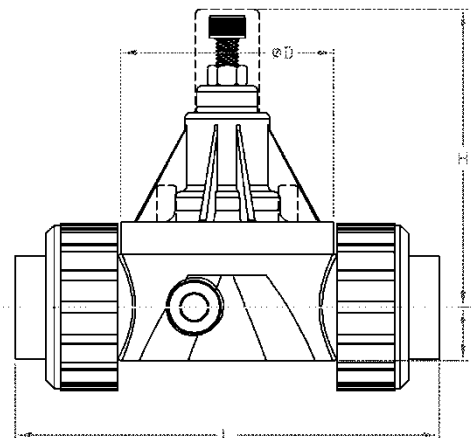
Threaded Female



Socket



Flanged



Union

Nominal Size		PVC, CPVC, PP & PVDF						
NPS	DIN	Ø D	h	H	L	L	L	L
Inch	DN	inch	inch	inch	inch	inch	inch	inch
SERIES-A		mm	mm	mm	mm	mm	mm	mm
					Thrd	Soc	Flg	Unin
1/4	8	2.50 63.5	0.66 16.7	4.48 113.9	3.40 86.4	3.40 86.4	N/A	6.00 152.4
3/8	10	2.50 63.5	0.66 16.7	4.48 113.9	3.40 86.4	3.40 86.4	N/A	6.00 152.4
1/2	15	2.50 63.5	0.66 16.7	4.48 113.9	3.40 86.4	3.40 86.4	5.40 137.2	6.00 152.4

Nominal Size		316L SS						
NPS	DIN	Ø D	h	H	L	L	L	L
Inch	DN	inch	inch	inch	inch	inch	inch	inch
SERIES-A		mm	mm	mm	mm	mm	mm	mm
					Thrd	Soc	Flg	
1/4	8	2.50 63.5	0.60 15.2	4.47 113.5	2.50 63.5	2.50 63.5	N/A	
3/8	10	2.50 63.5	0.49 12.4	4.58 116.3	2.50 63.5	2.50 63.5	N/A	
1/2	15	2.50 63.5	0.60 15.2	4.72 119.8	2.50 63.5	2.50 63.5	6.15 156.2	

# Back Pressure Valves ( Pressure Retaining Valves)

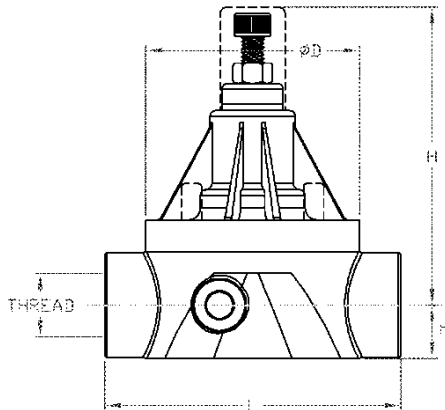
## 1/2" High Flow, 3/4", 1" ECO Valves

Body Configuration Model ECO-55

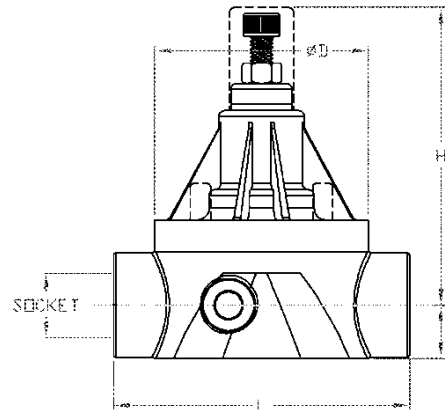
Dimensions

ECO-75

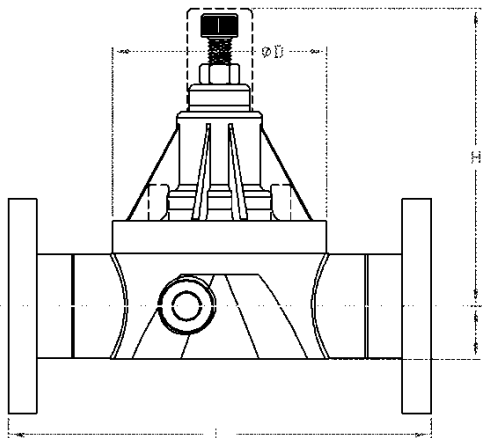
ECO-100



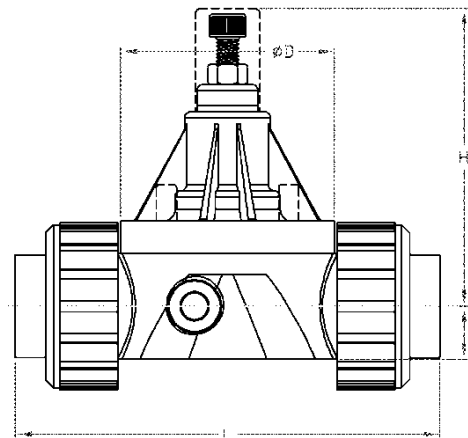
Threaded Female



Socket



Flanged



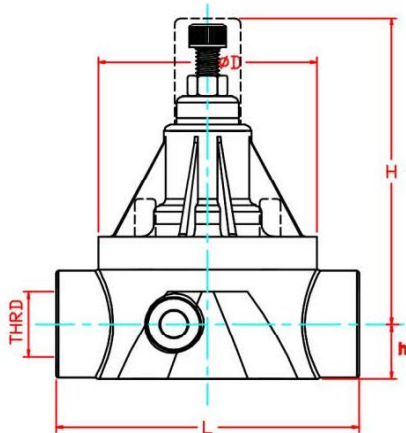
Union

Nominal Size		PVC, CPVC, PP & PVDF						
NPS Inch	DIN DN	Ø D inch mm	h inch mm	H inch mm	L inch mm	L inch mm	L inch mm	L inch mm
SERIES-B					Thrd	Soc	Flg	Union
1/2 High Flow	15	3.50 88.9	0.88 22.4	4.80 121.9	4.85 123.2	4.85 123.2	6.93 176.0	7.30 185.4
3/4	20	3.50 88.9	0.88 22.4	4.80 121.9	4.85 123.2	4.85 123.2	7.17 182.1	7.30 185.4
1	25	3.50 88.9	0.88 22.4	4.80 121.9	4.85 123.2	4.85 123.2	7.48 190.0	7.30 185.4

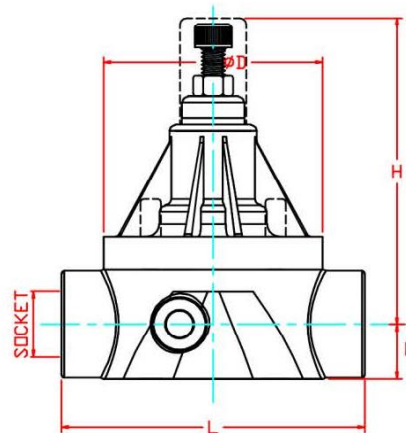
Nominal Size		316L SS						
NPS Inch	DIN DN	Ø D inch mm	h inch mm	H inch mm	L inch mm	L inch mm	L inch mm	L inch mm
SERIES-B					Thrd	Soc	Flg	
1/2 High Flow	15	3.50 88.9	0.63 16.0	4.80 121.9	3.50 88.9	3.50 88.9	7.17 182.1	
3/4	20	3.50 88.9	0.73 18.5	4.80 121.9	3.50 88.9	3.50 88.9	7.50 190.5	
1	25	3.50 88.9	0.86 21.8	5.10 129.5	3.50 88.9	3.50 88.9	7.66 194.6	

# Back Pressure Valves ( Pressure Retaining Valves)

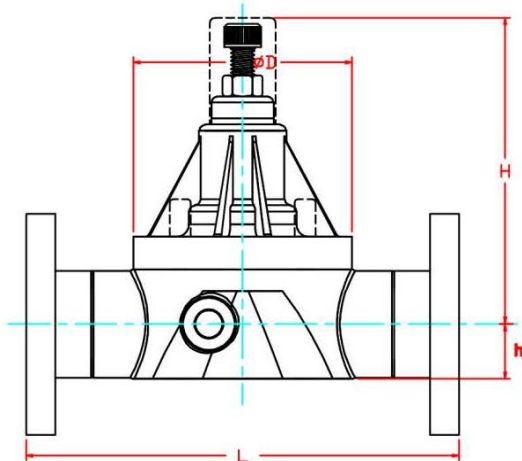
Body Configuration Model ECO-110 Dimensions  
 ECO-125  
 ECO-150  
 ECO-200



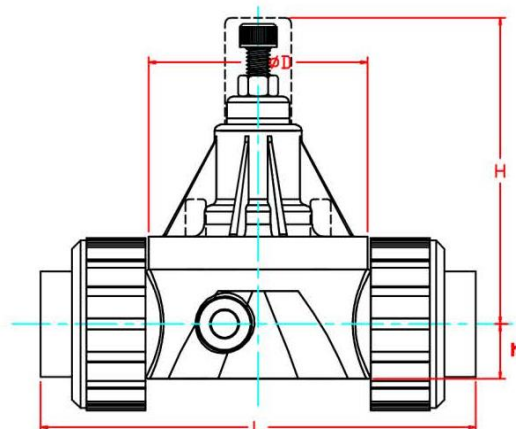
**Threaded Female**



**Socket**



**Flanged**



**Union**

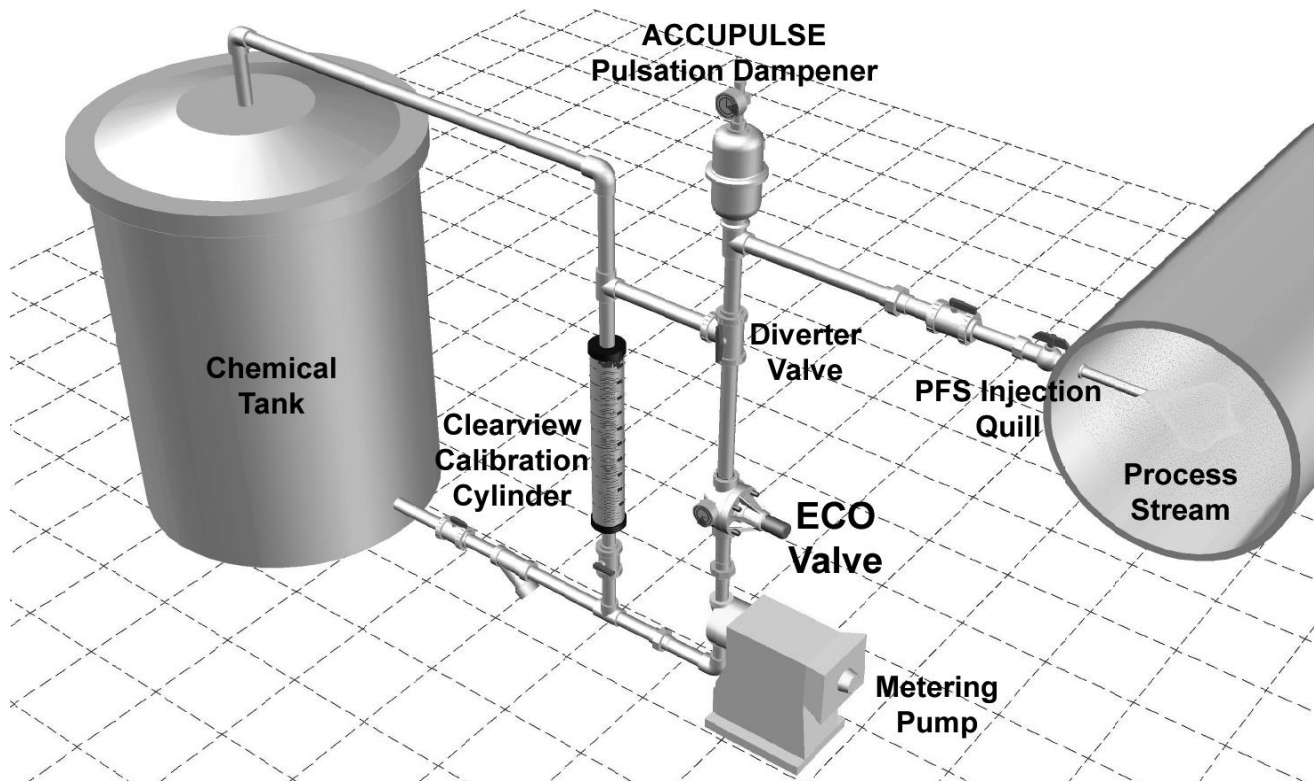
Nominal Size		PVC, CPVC, PP & PVDF						
NPS Inch	DN mm	Ø D inch mm	h inch mm	H inch mm	L inch mm	L inch mm	L inch mm	L inch mm
SERIES-C					Thrd	Soc	Fig	Union
1	25	4.00 101.6	1.47 37.3	5.75 146.1	4.90 124.5	4.90 124.5	7.59 192.8	9.96 253.0
1¼	32	4.00 101.6	1.47 37.3	5.75 146.1	4.90 124.5	4.90 124.5	7.83 198.9	9.96 253.0
1½	40	4.00 101.6	1.47 37.3	5.75 146.1	6.10 154.9	6.10 154.9	9.27 235.5	9.96 253.0
2	50	4.00 101.6	1.47 37.3	5.75 146.1	6.10 154.9	6.10 154.9	9.61 244.1	9.96 253.0

Nominal Size		316L SS						
NPS Inch	DN mm	Ø D inch mm	h inch mm	H inch mm	L inch mm	L inch mm	L inch mm	L inch mm
SERIES-C					Thrd	Soc	Fig	
1	25	4.00 101.6	1.05 26.7	5.78 146.8	4.00 101.6	4.00 101.6	8.15 207.0	
1¼	32	4.00 101.6	1.05 26.7	5.78 146.8	4.00 101.6	4.00 101.6	8.14 206.7	
1½	40	4.00 101.6	1.45 36.8	5.83 148.1	4.72 119.9	4.72 119.9	9.60 243.8	
2	50	4.00 101.6	1.45 36.8	5.82 147.8	4.72 119.9	4.72 119.9	9.72 246.9	

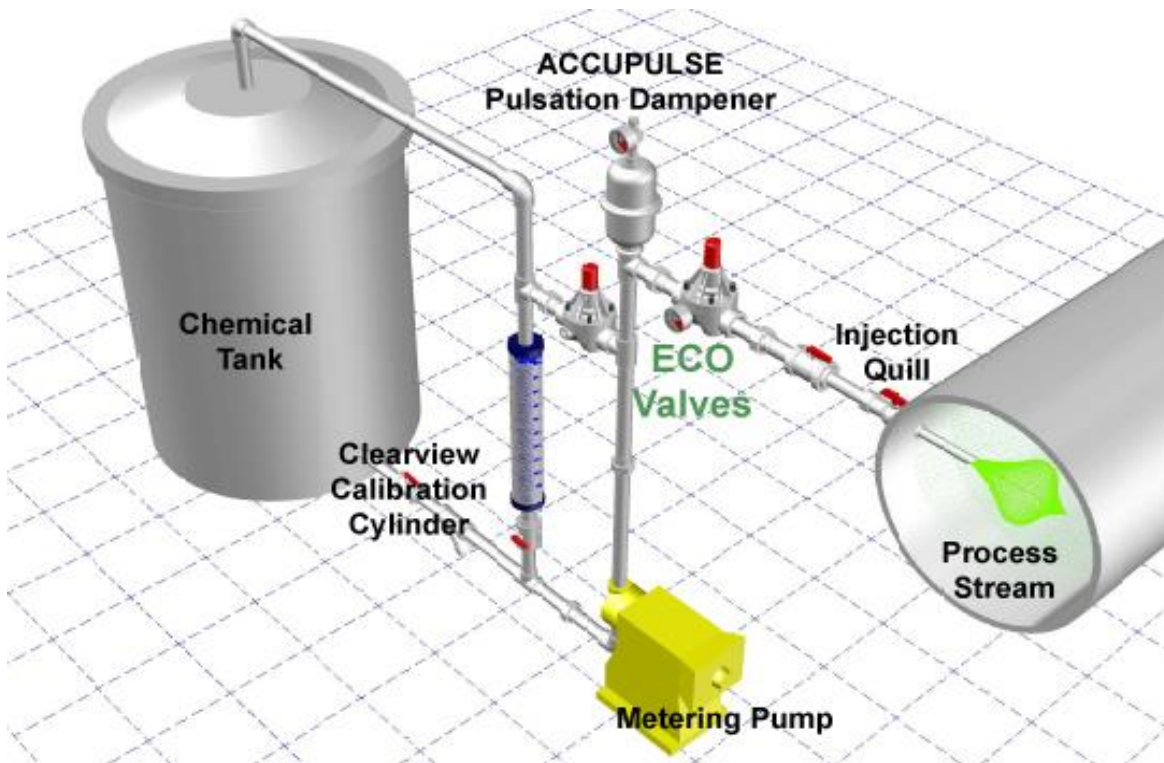
## Typical Installations

The installations below are typical installation examples only. Consult your engineering department for the appropriate installation for your application or call the factory for advice

### Example A: Solenoid Driven Pumps Rated Under 150 psig



### Example B: System arrangement for solenoid driven (above 150 psig) or motor driven pumps.



## **Terms and Conditions**

Minimum order for stocking distributors is \$300.00 net cost.

Minimum order for resale or OEM is \$100.00 net cost.

### **Special Terms are as follows:**

Net 30 days from date of invoice.

All outstanding invoices will have a 2% service charge applied from 60 days on and every 30 days thereafter. The account will also be put on hold, until payment, including service charge is received.

All shipments are based on F.O.B. our Plant. Delivery on standard valves is 2-3 days (dependent on size of order and availability of components from stock). All taxes are extra.

Restocking charge is 20%.

All goods to be returned for warranty inspection will require a R.G.A. # that can be obtained from our office. Goods to be shipped prepaid to our plant. This includes goods being returned for restocking.

Prices subject to change without notice.

## **LIMITED WARRANTY**

Primary Fluid Systems Inc. (Primary) warrants its products against defects in workmanship or materials for three (3) year under normal use. Three-(3) year available when application card is completed and returned to factory.

Primary's obligations and liabilities under this warranty shall be limited to replacement of the product, or a refund of an amount not to exceed the purchase price of the product(s) to which such warranty claim is made. Repairs or replacements are made subject to our inspection of the returned product(s). Primary's decision of one of these alternatives shall be the buyer's exclusive remedy.

This warranty does not extend to damage by corrosion or other decomposition by chemical action. Primary does not warrant damages caused by (a) improper use of the product, (b) unauthorized modification or attachment to product, (c) misuse, abuse, accident or negligent handling or installation of product, or (d) alterations or repairs made by purchaser.

The materials of construction offered are recommendations only, subject in all cases to acceptance by purchaser. These recommendations do not constitute any guarantee against corrosion or decomposition, but are based on previous experience and best available information of the industry.

Statements and instructions set forth herein are based on the best information and practices known to Primary, but it should not be assumed that every acceptable safety procedure is contained herein. Of necessity Primary cannot guarantee that actions in accordance with such statements and instructions will result in the complete elimination of hazards and it assumes no liability for accidents that may occur.

Except as specifically provided herein, Primary makes no warranty, representations, promise or guarantee, either express or implied, statutory or otherwise, with respect to the product and technical information provided, including the products' quality, performance, merchantability, or fitness for a particular purpose.

In no event will Primary be liable for indirect, special, incidental, economic, covert or consequential damages arising out of the use or inability to use the product, including without limitation, damages or costs relating to the loss of profits, business and good will even if advised of the possibility of such damages. In no event shall Primary's liability exceed the amount paid by you for the product.

The warranty and remedies set forth herein are exclusive and in lieu of all others, oral or written, express or implied. No Primary dealer, distributor, agent or employee is authorized to make any modification or addition to this warranty. This warranty gives you specific legal rights and you may also have other rights which vary from state to state.