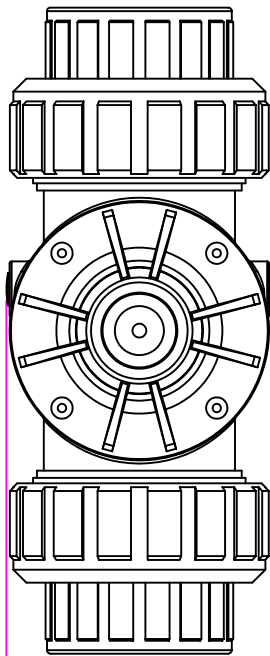
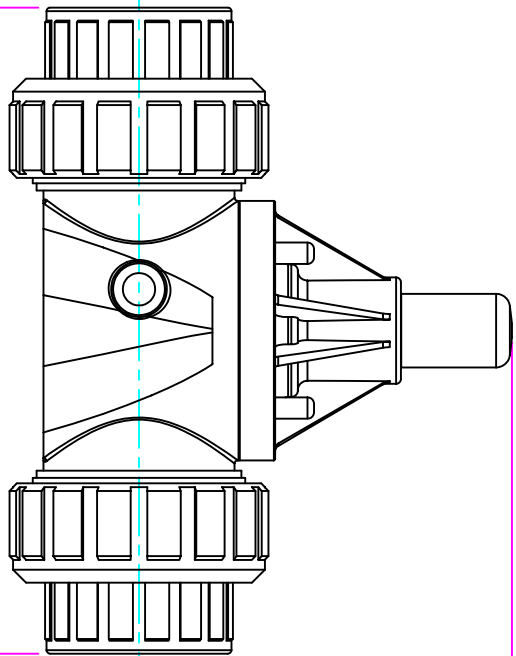


THIS DRAWING IS THE PROPERTY OF PRIMARY FLUID SYSTEMS INC. FROM WHICH A WRITTEN CONSENT FOR APPROVAL SHALL BE REQUIRED PRIOR TO COPYING.

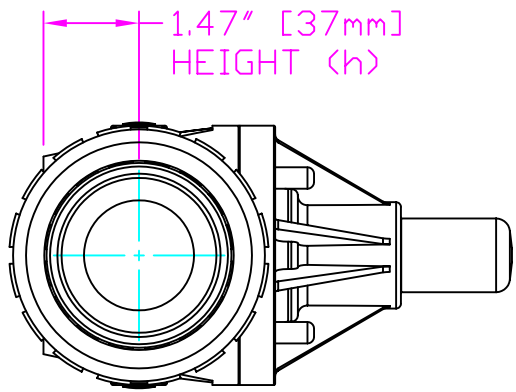
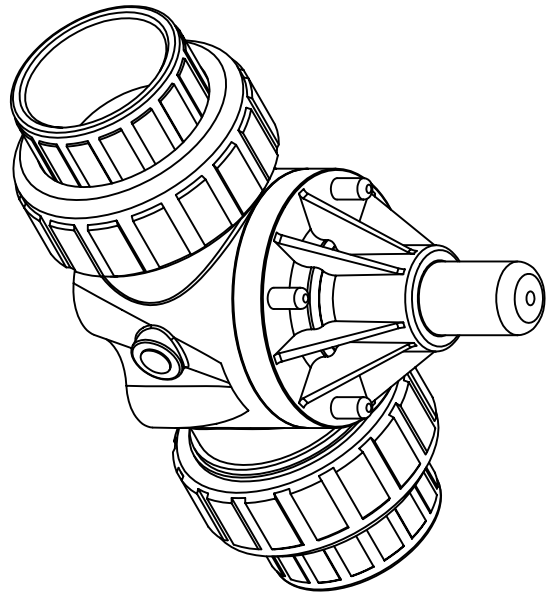


WIDTH (W)
4.10" [104mm]



9.96" [253mm]
LENGTH (L)

5.75" [146mm]
HEIGHT (H)



1.47" [37mm]
HEIGHT (h)

THIS DRAWING WITH DIMENSIONS
APPLY TO FOLLOWING MODELS:

- ECD-2001-PVC-P
- ECD-2001-CPVC-T
- ECD-2001-PP-T
- ECD-200P VDF-T
- ECD-200J-PVC-P
- ECD-200J-CPVC-T
- ECD-200J-PP-T
- ECD-200J-PVDF-T

PRIMARY FLUID SYSTEMS INC.

UNION X 2" (DN 50) SOCKETED
ECD VALVE

1050 Cooke Blvd, Burlington, Ontario L7T 4A8

| | | | | | |
|------------------------|--|------------------------|--|-----------------------|--|
| PROJECT: C-SERIES ECD | | SHT. 1 OF 1 | | DRAWN BY: VICTOR V.L. | |
| DATE ISSUED: 25-NOV-11 | | SCALE: 1:3 | | UNITS: INCHES | |
| MATERIAL: POLY | | REV.#: 0 | | REVISIONS: | |
| DVG NDI: | | DVG TYPE: | | DIMENSIONAL TOLERANCE | |
| ECO-2001-PVC-P-2D | | PLANAR VIEW 2D | | XXX = ± 0.25" | |
| APPROVED BY: | | THIRD ANGLE PROJECTION | | SHEET SIZE: 8.5 X 11 | |
| A | | A | | A | |