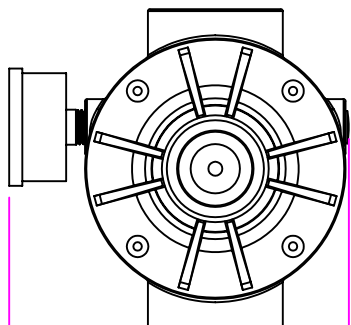
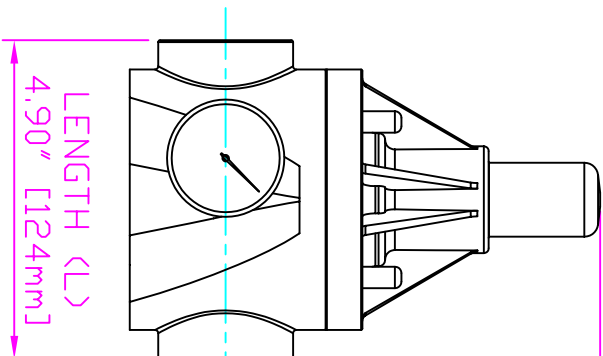


THIS DRAWING IS THE PROPERTY OF PRIMARY FLUID SYSTEMS INC. FROM WHICH A WRITTEN CONSENT FOR APPROVAL SHALL BE REQUIRED PRIOR TO COPYING.

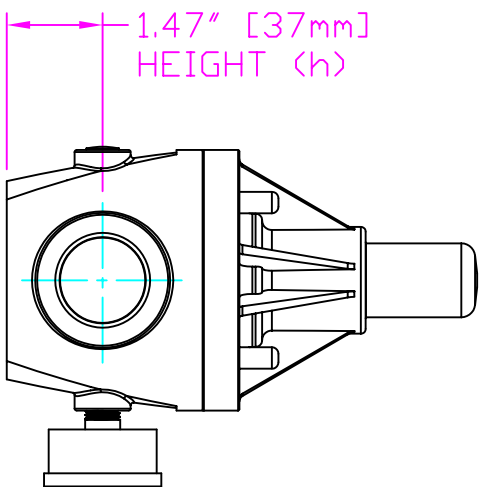
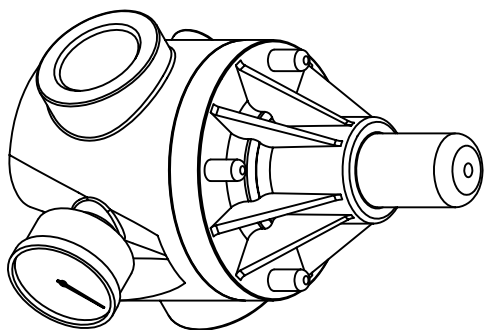


WIDTH (W)
5.21" [132mm]



LENGTH (L)
4.90" [124mm]

5.75" [146mm]
HEIGHT (H)



1.47" [37mm]
HEIGHT (h)

THIS DRAWING WITH DIMENSIONS
APPLY TO FOLLOWING MODELS:

- ECD-110C-PVC-P-GAUGE
- ECD-110C-CPVC-T-GAUGE
- ECD-110C-PP-T-GAUGE
- ECD-110C-PVDF-T-GAUGE
- ECD-110D-PVC-P-GAUGE
- ECD-110D-CPVC-T-GAUGE
- ECD-110D-PP-T-GAUGE
- ECD-110D-PVDF-T-GAUGE

PRIMARY FLUID SYSTEMS INC.

1050 Cooke Blvd., Burlington, Ontario L7T 4A8

1" (DN 25) SOCKETED
ECD VALVE (HIGH FLOW VERSION)
WITH GAUGE

DWG TYPE:

PLANAR VIEW 2D

PROJECT C-SERIES ECD SHIT 1 OF 1 DRAWN BY VICTOR W. L.

DATE ISSUED: 21-NDV-11 SCALE: 1:3 UNITS: INCHES

DWG NO: ECO-110C-PVC-P-GAUGE-2D

MATERIAL: POLY

APPROVED BY:



DIMENSIONAL TOLERANCE
XXX = ± 0.25"

REV# 0

8.5 X 11
SHEET
SIZE:

A