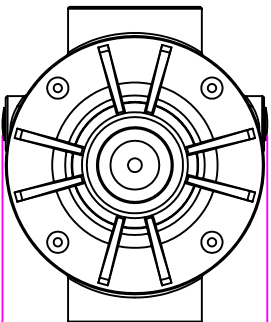
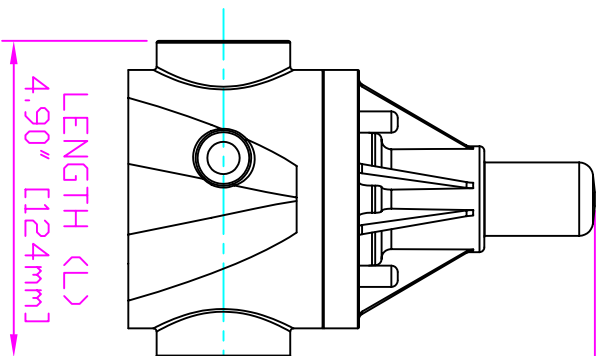
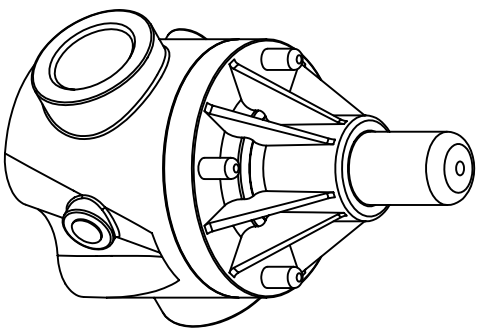


THIS DRAWING IS THE PROPERTY OF PRIMARY FLUID SYSTEMS INC. FROM WHICH A WRITTEN CONSENT FOR APPROVAL SHALL BE REQUIRED PRIOR TO COPYING.

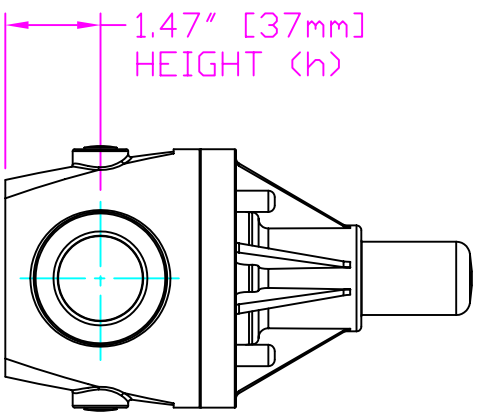


WIDTH (W)
4.10" [104mm]



LENGTH (L)
4.90" [124mm]

5.75" [146mm]
HEIGHT (H)



1.47" [37mm]
HEIGHT (h)

THIS DRAWING WITH DIMENSIONS
APPLY TO FOLLOWING MODELS:

- ECD-110C-PVC-P
- ECD-110C-CPVC-T
- ECD-110C-PP-T
- ECD-110C-PVDF-T
- ECD-110D-PVC-P
- ECD-110D-CPVC-T
- ECD-110D-PP-T
- ECD-110D-PVDF-T

PRIMARY FLUID SYSTEMS INC.

1050 Cooke Blvd., Burlington, Ontario L7T 4A8

1" (DN 25) SOCKETED
ECD VALVE (HIGH FLOW VERSION)

PLANAR VIEW 2D

PROJECT: C-SERIES ECD	SHT: 1 OF 1	DRAWN BY: VICTOR W.L.
DATE ISSUED: 21-NOV-11	SCALE: 1/3	UNITS: INCHES
DWG NO: ECO-110C-PVC-P-2D		REV: 0
MATERIAL: PDL Y		

APPROVED BY:		DIMENSIONAL TOLERANCE XXX = ± 0.25"
		SHEET SIZE: 8.5 x 11



A