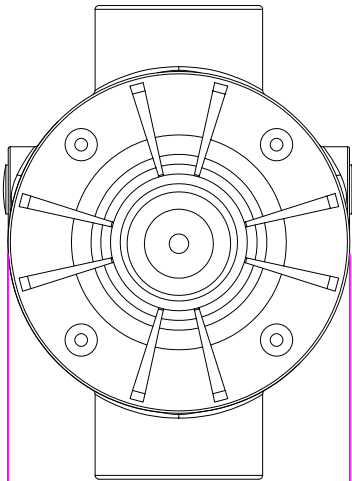
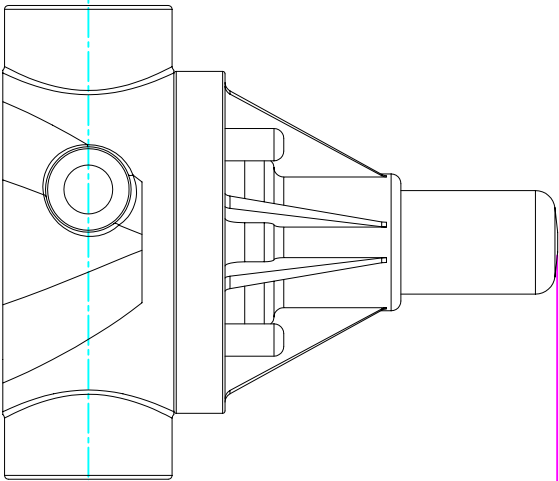
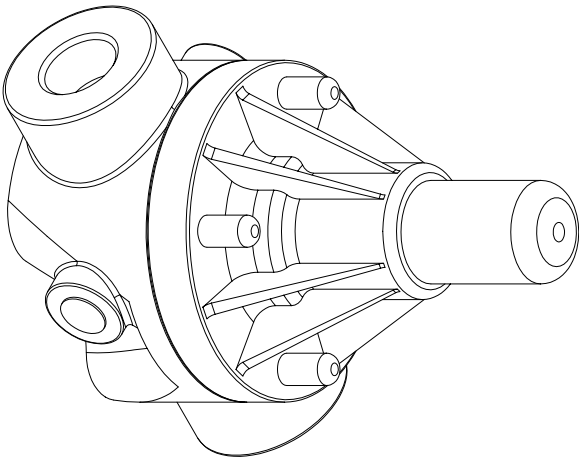


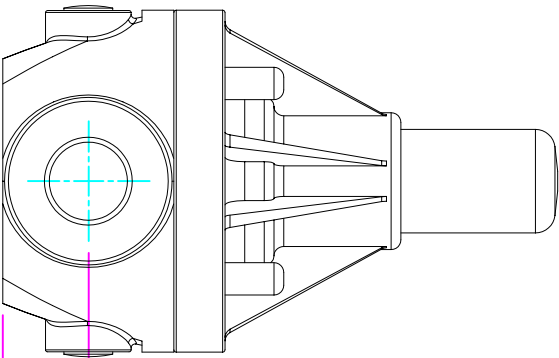
THIS DRAWING IS THE PROPERTY OF PRIMARY FLUID SYSTEMS INC. FROM WHICH A WRITTEN CONSENT FOR APPROVAL SHALL BE REQUIRED PRIOR TO COPYING.



WIDTH
3.50" [89mm]



4.80" [122mm]
HEIGHT (H)



0.88" [22mm]
HEIGHT (h)

- THIS DRAWING WITH DIMENSIONS
APPLY TO FOLLOWING MODELS:
- ECD-SSC-PVC-P
 - ECD-SSC-CPVC-T
 - ECD-SSC-PP-T
 - ECD-SSC-PVDF-T
 - ECD-SSD-PVC-P
 - ECD-SSD-CPVC-T
 - ECD-SSD-PP-T
 - ECD-SSD-PVDF-T

4.85" [123mm]
LENGTH (L)

PRIMARY FLUID SYSTEMS INC.

1050 Cooke Blvd., Burlington, Ontario L7T 4A8

TITLE

1/2" (DN 15) SOCKETED
ECD VALVE (HI FLOW VERSION)

DWG TYPE:

PLANAR VIEW 2-D

PROJECT B-SERIES ECD

DATE ISSUED: 30-JUL-10

DWG NO: ECD-SSC-PVC-P-2D

SHT: 1 OF 1

SCALE: 1/2"

DRAWN BY: VICTOR W.L.

UNITS: INCHES

REVISION: 1

MATERIAL: POLY

APPROVED BY:

8.5 X 11

SHEET SIZE:

A