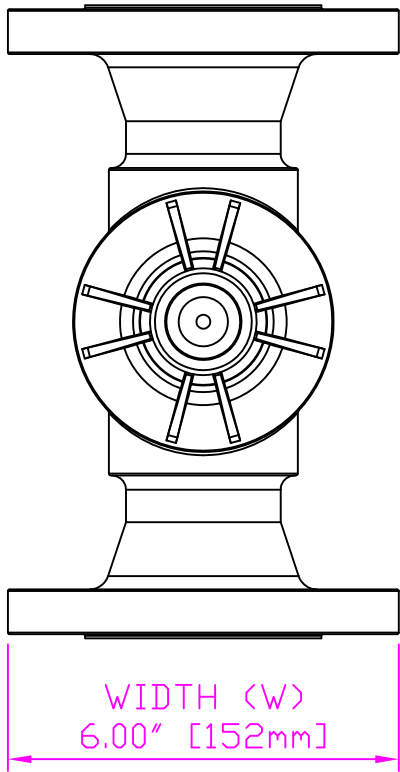
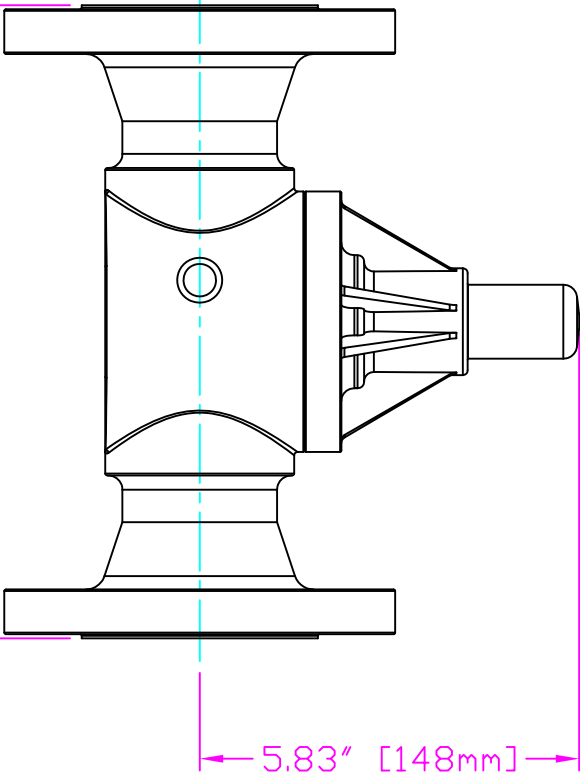


THIS DRAWING IS THE PROPERTY OF PRIMARY FLUID SYSTEMS INC. FROM WHICH A WRITTEN CONSENT FOR APPROVAL SHALL BE REQUIRED PRIOR TO COPYING.

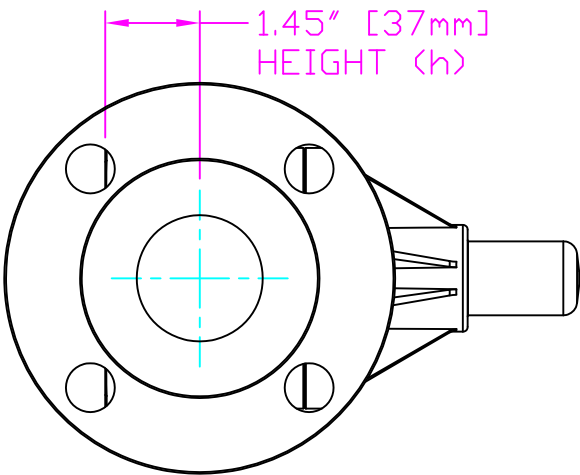
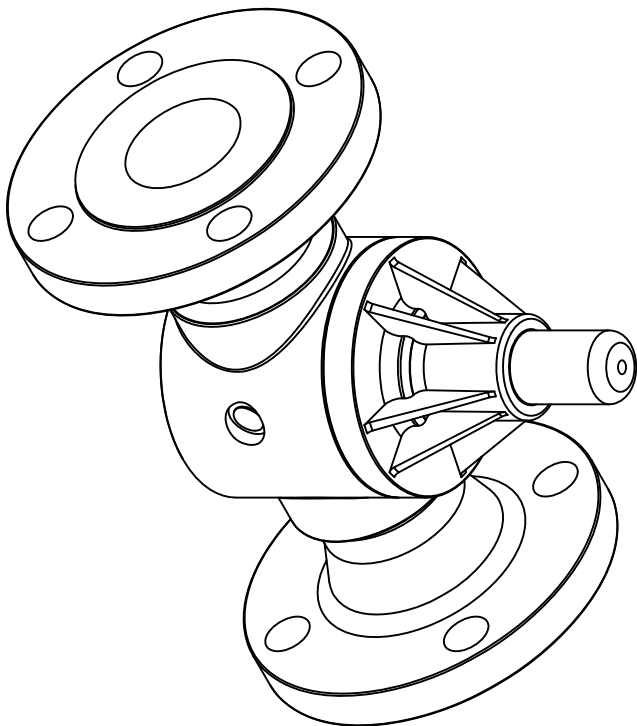


WIDTH (W)
6.00" [152mm]



5.83" [148mm]
HEIGHT (H)

9.72" [247mm]
LENGTH (L)



1.45" [37mm]
HEIGHT (h)

THIS DRAWING WITH DIMENSIONS
APPLY TO FOLLOWING MODELS:

- ECD-200E-SS-T
- ECD-200E-ALL20-T
- ECD-200E-HAST-T
- ECD-200F-SS-T
- ECD-200F-ALL20-T
- ECD-200F-HAST-T

PRIMARY FLUID SYSTEMS INC.

1050 Cooke Blvd., Burlington, Ontario L7T 4A8

2" (DN 50) FLANGED
ECD VALVE

TITLE	PROJECT C-SERIES ECD			SHT: 1 OF 1	DRAWN BY: VICTOR W.L.
	DATE ISSUED: 13-DEC-11	SCALE: 1:3	UNITS: INCHES		
DWG TYPE: PLANAR VIEW 2D	DWG NO: ECO-200E-SS-T-2D	APPROVED BY:	REVISION: 0	DIMENSIONAL TOLERANCE: XXX = ± 0.25"	
MATERIAL: METALLIC		HOB ANGLE PROJECTION		SHEET SIZE: 8.5 X 11	

A