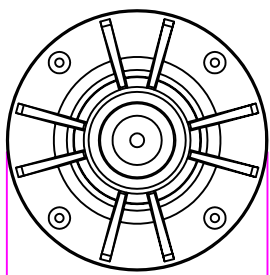
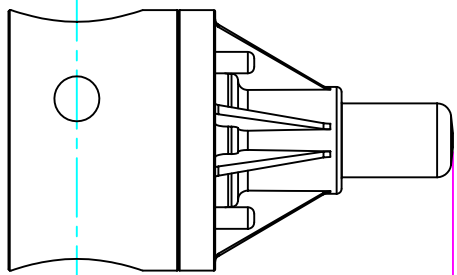
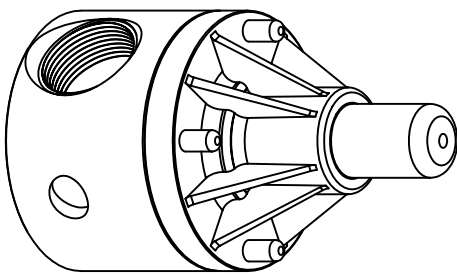


THIS DRAWING IS THE PROPERTY OF PRIMARY FLUID SYSTEMS INC. FROM WHICH A WRITTEN CONSENT FOR APPROVAL SHALL BE REQUIRED PRIOR TO COPYING.

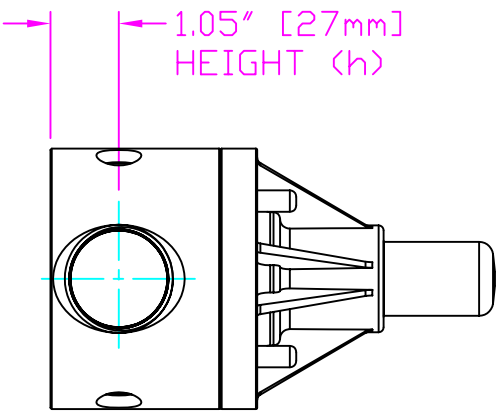


WIDTH (W)  
4.00" [102mm]



LENGTH (L)  
4.00" [102mm]

5.78" [147mm]  
HEIGHT (H)



1.05" [27mm]  
HEIGHT (h)

THIS DRAWING WITH DIMENSIONS  
APPLY TO FOLLOWING MODELS:

- ECD-125A-SS-T
- ECD-125A-ALL20-T
- ECD-125A-HAST-T
- ECD-125B-SS-T
- ECD-125B-ALL20-T
- ECD-125B-HAST-T

**PRIMARY FLUID SYSTEMS INC.**

1050 Cooke Blvd., Burlington, Ontario L7T 4A8

TITLE:  
**1 1/4" THREADED  
ECD VALVE**

DWG TYPE:  
PLANAR VIEW 2D

PROJECT: C-SERIES ECD	SHT: 1 OF 1	DRAWN BY: VICTOR W.L.
DATE ISSUED: 13-DEC-11	SCALE: 1:1	UNITS: INCHES
DWG NO: ECO-125A-SS-T-2D		REV.#: 0
MATERIAL: METALLIC		DIMENSIONAL TOLERANCE: XXX = ± 0.25"
APPROVED BY:	THIRD ANGLE PROJECTION	SHEET SIZE: 8.5 X 11
		<b>A</b>