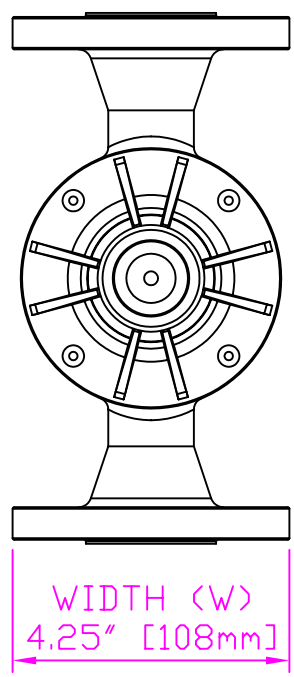
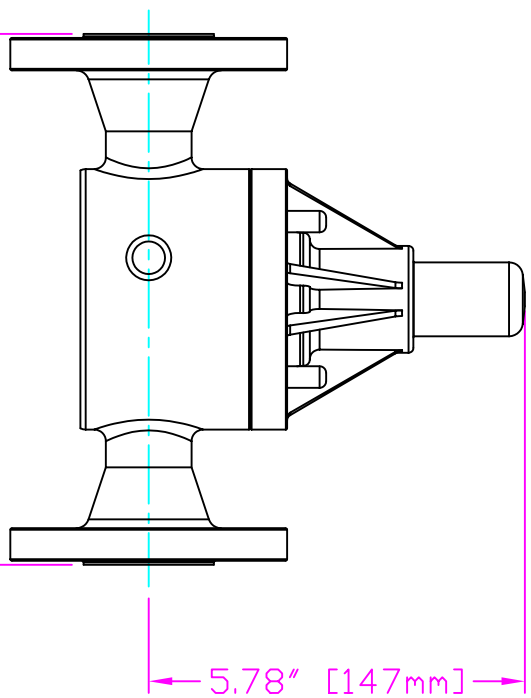
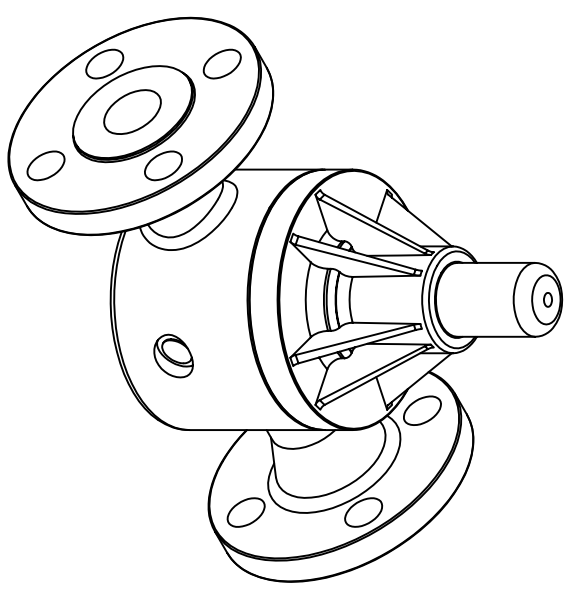


THIS DRAWING IS THE PROPERTY OF PRIMARY FLUID SYSTEMS INC. FROM WHICH A WRITTEN CONSENT FOR APPROVAL SHALL BE REQUIRED PRIOR TO COPYING.

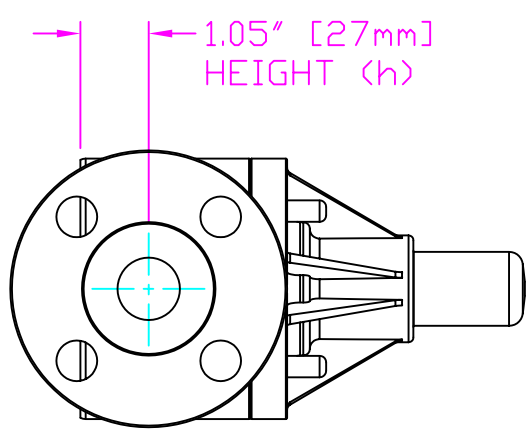


WIDTH (W)
4.25" [108mm]



8.15" [207mm]
LENGTH (L)

5.78" [147mm]
HEIGHT (H)



1.05" [27mm]
HEIGHT (h)

THIS DRAWING WITH DIMENSIONS
APPLY TO FOLLOWING MODELS:

- ECD-110E-SS-T
- ECD-110E-ALL20-T
- ECD-110E-HAST-T
- ECD-110F-SS-T
- ECD-110F-ALL20-T
- ECD-110F-HAST-T

PRIMARY FLUID SYSTEMS INC.

1" (DN 25) FLANGED
ECD VALVE (HIGH FLOW VERSION)

1050 Cooke Blvd, Burlington, Ontario L7T 4A8

PROJECT: C-SERIES ECD		SHT. 1 OF 1		DRAWN BY: VICTOR W.L.	
DATE ISSUED: 13-DEC-11		SCALE: 1:3		UNITS: INCHES	
DATE ISSUED: 13-DEC-11		SCALE: 1:3		UNITS: INCHES	
MATERIAL: METALLIC		DIMENSIONAL TOLERANCE XXX = ± 0.25"		SHEET SIZE: 8.5 X 11	
APPROVED BY:		HIDDEN ANGLE PROJECTION		REV.# 0	
DVG TYPE: PLANAR VIEW 2D		HIDDEN ANGLE PROJECTION		REV.# 0	

A