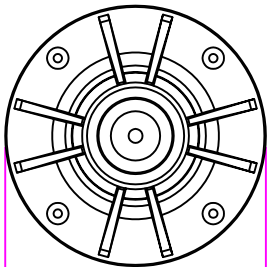
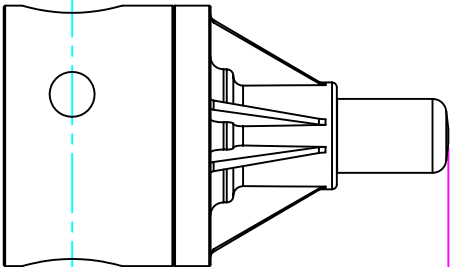
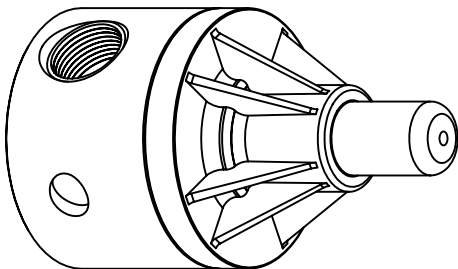


THIS DRAWING IS THE PROPERTY OF PRIMARY FLUID SYSTEMS INC. FROM WHICH A WRITTEN CONSENT FOR APPROVAL SHALL BE REQUIRED PRIOR TO COPYING.



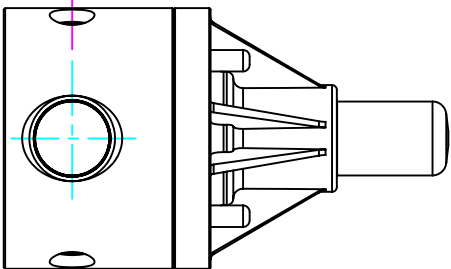
WIDTH (W)
4.00" [102mm]



LENGTH (L)
4.00" [102mm]

5.78" [147mm]
HEIGHT (H)

1.05" [27mm]
HEIGHT (h)



THIS DRAWING WITH DIMENSIONS
APPLY TO FOLLOWING MODELS:

- ECD-110A-SS-T
- ECD-110A-ALL20-T
- ECD-110A-HAST-T
- ECD-110B-SS-T
- ECD-110B-ALL20-T
- ECD-110B-HAST-T

PRIMARY FLUID SYSTEMS INC.


1090 Cooke Blvd, Burlington, Ontario L7T 4A8

TITLE:
1" THREADED
ECD VALVE (HIGH FLOW VERSION)

DWG TYPE:

PLANAR VIEW 2D

PROJECT: C-SERIES ECD **SHT:** 1 OF 1 **DRAWN BY:** VICTOR W. L.
DATE ISSUED: 12-DEC-11 **SCALE:** 1:3 **UNITS:** INCHES
DWG NO.: **ECO-110A-SS-T-2D**

MATERIAL: METALLIC
APPROVED BY:  **REVISION:** 0
DIMENSIONAL TOLERANCE: XXX = ± 0.25"

PROJ. ANGLE PROJECTION:  **SHEET SIZE:** 8.5 X 11
APP. #: **A**