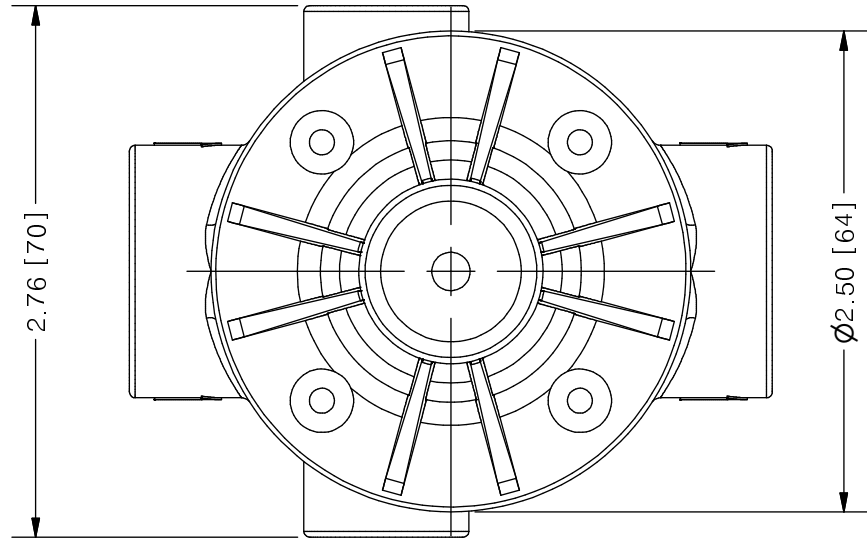
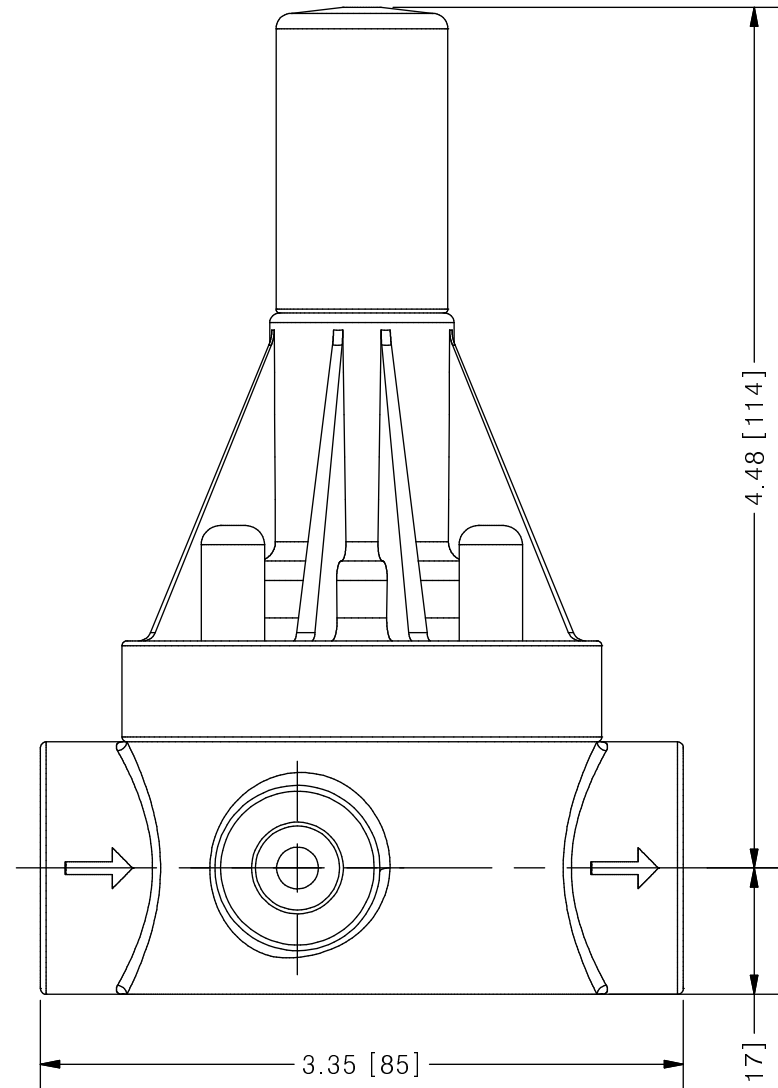


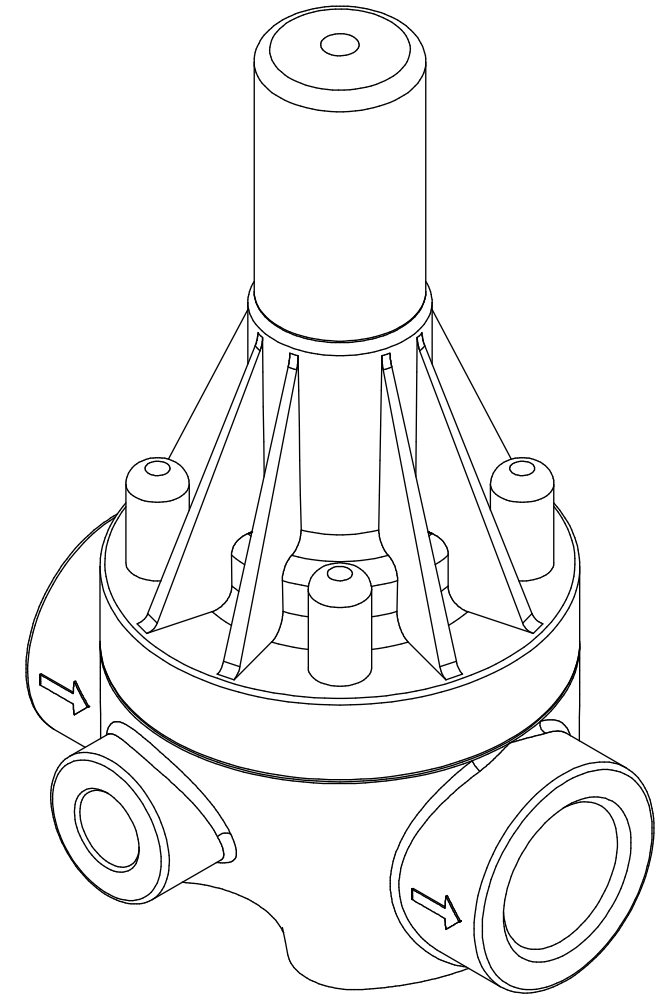
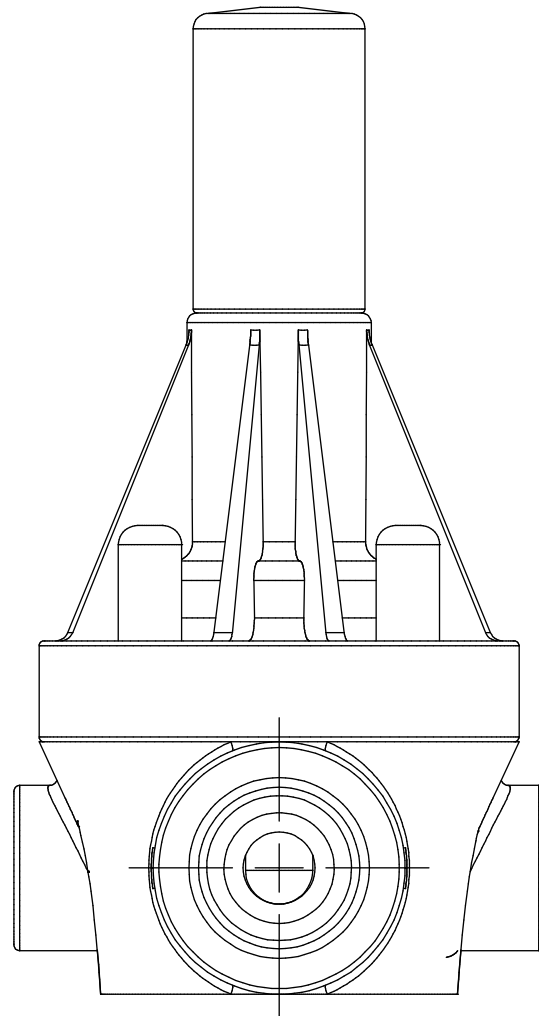
THIS DRAWING IS THE PROPERTY OF PRIMARY FLUID SYSTEMS INC. FROM WHICH A WRITTEN CONSENT FOR APPROVAL SHALL BE REQUIRED PRIOR TO COPYING.



ECO VALVE® A-SERIES BACK PRESSURE VALVE



SCALE 1 : 1



| | NO. | NAME | DESCRIPTION |
|------------------------|-----|-------------------------------------|---|
| | 1 | MAX ALLOWABLE OPERATING TEMPERATURE | 180°F (82°C) / 140°F (60°C) FOR PVC BODY |
| | 2 | MAX ALLOWABLE OPERATING PRESSURE | 150 PSIG @ 70°F |
| CONNECTIONS | 3 | SIZE: INLET/OUTLET | 1/2" |
| | 4 | CONNECTION TYPE | NPT |
| MATERIALS (WETTED) | 6 | BODY | PVC (CPVC, PP AND PVDF OPTIONAL) |
| | 7 | DIAPHRAGM | PTFE BACKED EPDM (PVC, EPDM AND VITON OPTIONAL) |
| MATERIALS (NON-WETTED) | 8 | SPRING BONNET/TOP | CPVC |
| | 9 | SPRING | NICKEL PLATED MUSIC WIRE ASTM A228 |
| | 10 | TOP/BOTTOM DISC | POLYPROPYLENE |
| | 11 | BOLTS, NUTS, WASHERS | 18.8 SS, ANSI B18.3 |
| | 12 | FACTORY SET PRESSURE | 50 PSIG |
| | 13 | SPRING RANGE | 7-150 PSIG |

| 0 | NEW DRAWING | -- | -- |
|------------------|-------------|------|------|
| REV | DESCRIPTION | DATE | NAME |
| REVISION HISTORY | | | |

| | | | | |
|---|--|--------------------------|--------------|---|
| PRIMARY FLUID SYSTEMS INC. 1050 COOKE BLVD, BURLINGTON, ONTARIO L7T 4A8 | | PROJECT: ECO A-SERIES | SHT: 1 OF 1 | DRAWN BY: NG |
| TITLE: BACK PRESSURE ECO VALVE A-SERIES WITH 1/2" NPT CONNECTIONS | | DATE DRAWN: 8/4/2016 | SCALE: 1 : 1 | UNITS: INCH [mm] |
| DWG NO: ECO-50A-PVC_R0 | | MATERIAL: SEE CHART | | REV# 0 |
| DWG NAME: ECO VALVE | | APPROVED BY: CHECKED BY: | | DIMENSIONAL TOLERANCE 0.X = ± 0.25" 0.XX = ± 0.25" 0.XXX = ± 0.25" |
| DWG TYPE: PLANAR VIEW | | | | |