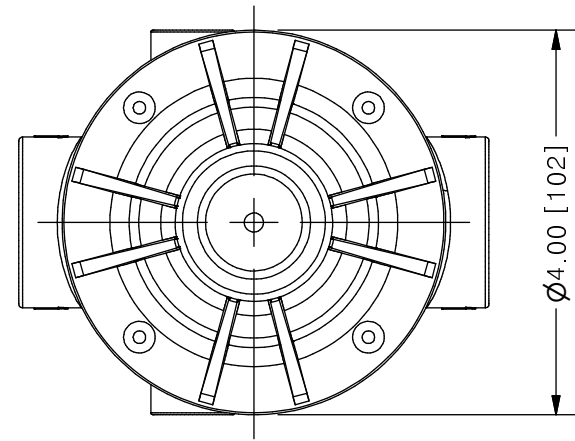
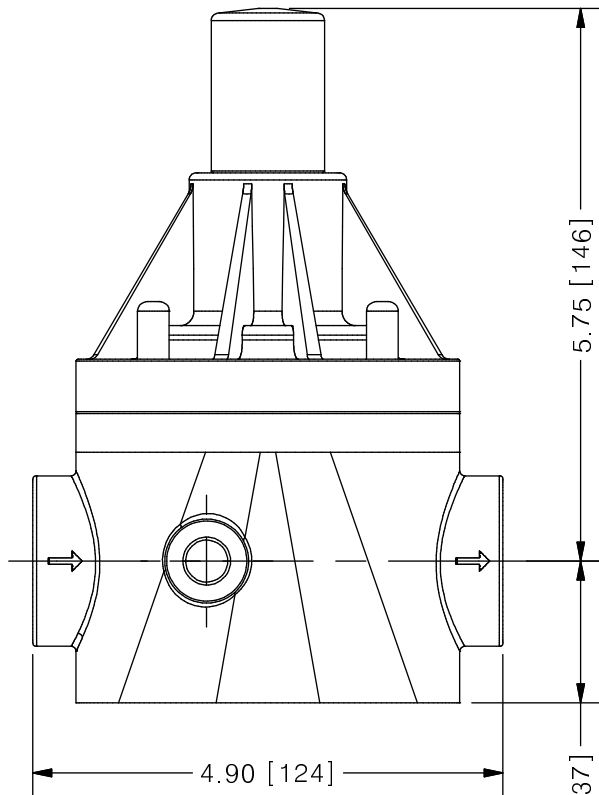


THIS DRAWING IS THE PROPERTY OF PRIMARY FLUID SYSTEMS INC. FROM WHICH A WRITTEN CONSENT FOR APPROVAL SHALL BE REQUIRED PRIOR TO COPYING.

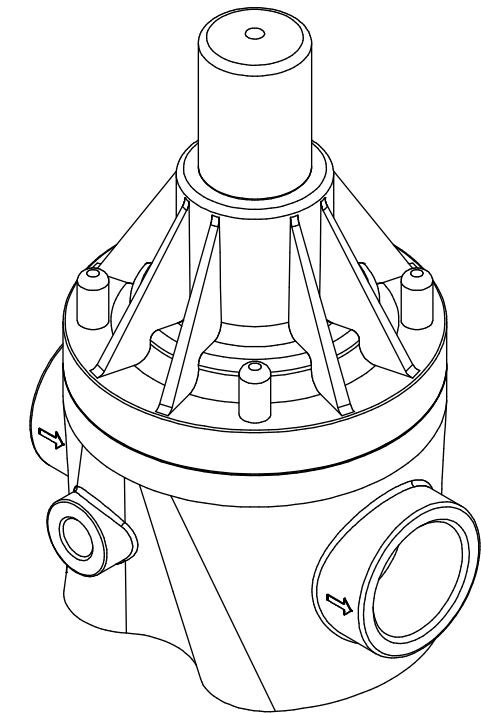
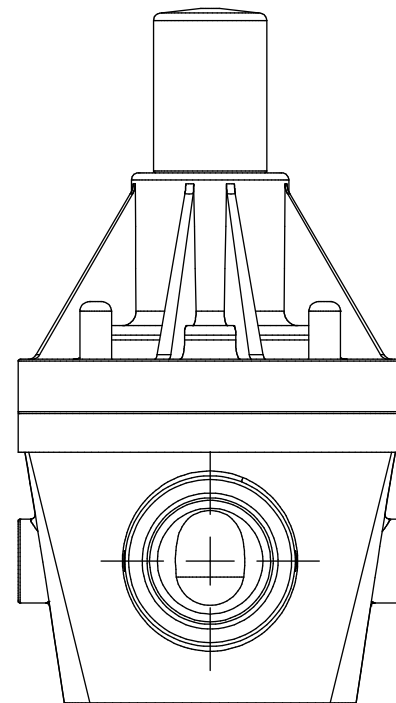
NO.	NAME	DESCRIPTION
1	MAX ALLOWABLE OPERATING TEMPERATURE	180°F (82°C) / 140°F (60°C) FOR PVC BODY
2	MAX ALLOWABLE OPERATING PRESSURE	150 PSIG @ 70°F
3	CONNECTIONS	SIZE: INLET/OUTLET 1"
4	CONNECTION TYPE	NPT
6	MATERIALS (WETTED)	6 BODY PVC (CPVC, PP AND PVDF OPTIONAL)
7		7 DIAPHRAGM PTFE BACKED EPDM (PVC, EPDM AND VITON OPTIONAL)
8	MATERIALS (NON-WETTED)	8 SPRING BONNET/TOP CPVC
9		9 SPRING NICKEL PLATED MUSIC WIRE ASTM A228
10		10 TOP/BOTTOM DISC POLYPROPYLENE
11		11 BOLTS, NUTS, WASHERS 18.8 SS, ANSI B18.3
12		12 FACTORY SET PRESSURE 50 PSIG
13		13 SPRING RANGE 7-150 PSIG



ECO VALVE® C-SERIES BACK PRESSURE VALVE



SCALE 1 : 2



REV	DESCRIPTION	DATE	NAME
0	NEW DRAWING	--	--

PRIMARY FLUID SYSTEMS INC. 1050 COOKE BLVD, BURLINGTON, ONTARIO L7T 4A8		PROJECT: ECO C-SERIES	SHT: 1 OF 1	DRAWN BY: NG
TITLE: BACK PRESSURE ECO VALVE C-SERIES WITH 1" NPT CONNECTIONS		DATE DRAWN: 8/4/2016	SCALE: 1 : 2	UNITS: INCH [mm]
DWG NAME: ECO VALVE DWG TYPE: PLANAR VIEW		MATERIAL: SEE CHART	DWG NO: ECO-110A-PVC_R0	DIMENSIONAL TOLERANCE 0.X = ± 0.25" 0.XX = ± 0.25" 0.XXX = ± 0.25"
APPROVED BY: _____ CHECKED BY: _____		THIRD ANGLE PROJECTION		REV# 0 SHEET SIZE: B