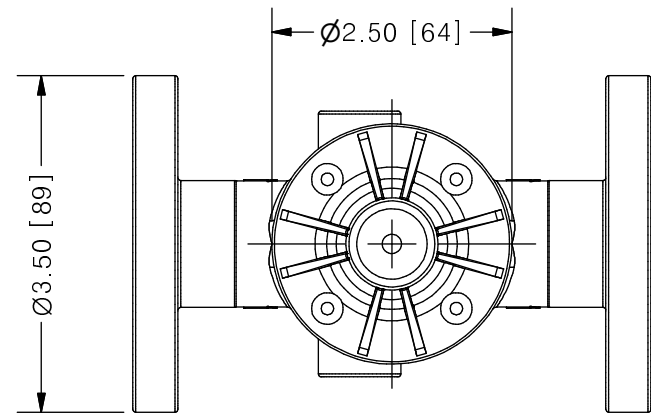
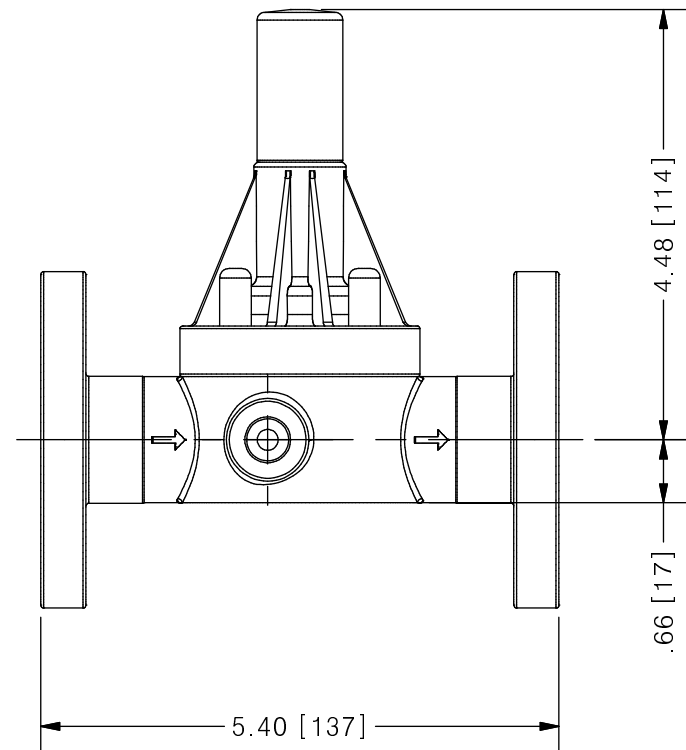


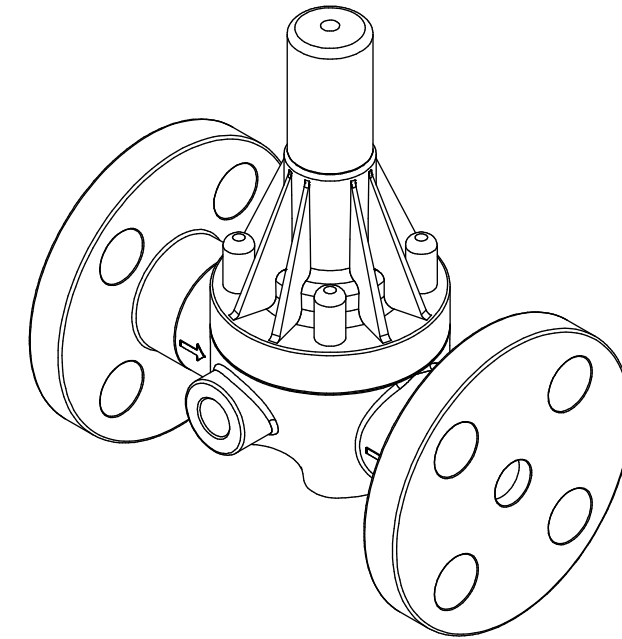
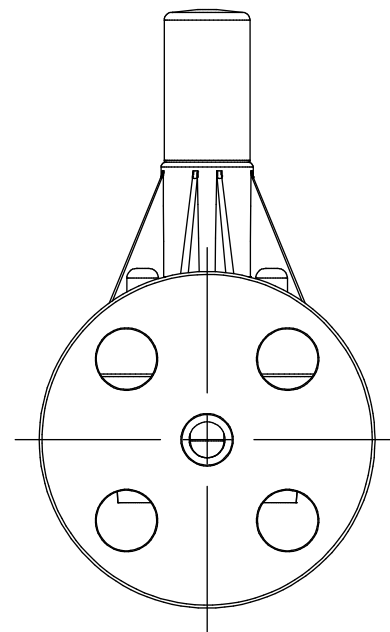
THIS DRAWING IS THE PROPERTY OF PRIMARY FLUID SYSTEMS INC. FROM WHICH A WRITTEN CONSENT FOR APPROVAL SHALL BE REQUIRED PRIOR TO COPYING.



## ECO VALVE® A-SERIES BACK PRESSURE VALVE



SCALE 1 : 2



	NO.	NAME	DESCRIPTION
	1	MAX ALLOWABLE OPERATING TEMPERATURE	180°F (82°C) / 140°F (60°C) FOR PVC BODY
	2	MAX ALLOWABLE OPERATING PRESSURE	150 PSIG @ 70°F
CONNECTIONS	3	SIZE: INLET/OUTLET	1/2"
	4	CONNECTION TYPE	ANSI FLANGE 150# FF B16.5
MATERIALS (WETTED)	6	BODY	PVC (CPVC, PP AND PVDF OPTIONAL)
	7	DIAPHRAGM	PTFE BACKED EPDM (PVC, EPDM AND VITON OPTIONAL)
MATERIALS (NON-WETTED)	8	SPRING BONNET/TOP	CPVC
	9	SPRING	NICKEL PLATED MUSIC WIRE ASTM A228
	10	TOP/BOTTOM DISC	POLYPROPYLENE
	11	BOLTS, NUTS, WASHERS	18.8 SS, ANSI B18.3
	12	FACTORY SET PRESSURE	50 PSIG
	13	SPRING RANGE	7-150 PSIG

REV	DESCRIPTION	DATE	NAME
0	NEW DRAWING	--	--

REVISION HISTORY

<b>PRIMARY FLUID SYSTEMS INC.</b> 1050 COOKE BLVD, BURLINGTON, ONTARIO L7T 4A8		PROJECT: EV A-SERIES	SHT: 1 OF 1	DRAWN BY: BRJB
TITLE: BACK PRESSURE ECO VALVE A-SERIES WITH 1/2" ANSI FLANGES		DATE DRAWN: 6/2/2017	SCALE: 1 : 2	UNITS: INCH [mm]
DWG NO: ECO-50E-PVC_R0		MATERIAL: SEE CHART	REV# 0	
DWG NAME: ECO VALVE		APPROVED BY:	CHECKED BY:	DIMENSIONAL TOLERANCE 0.X = ± 0.25" 0.XX = ± 0.25" 0.XXX = ± 0.25"
DWG TYPE: PLANAR VIEW		THIRD ANGLE PROJECTION		SHEET SIZE: <b>B</b>