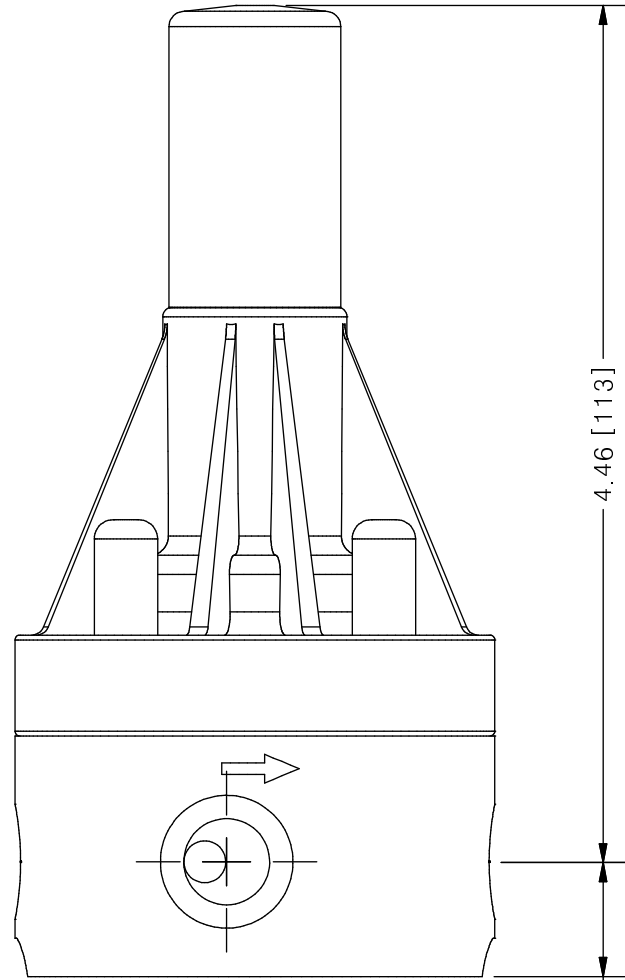
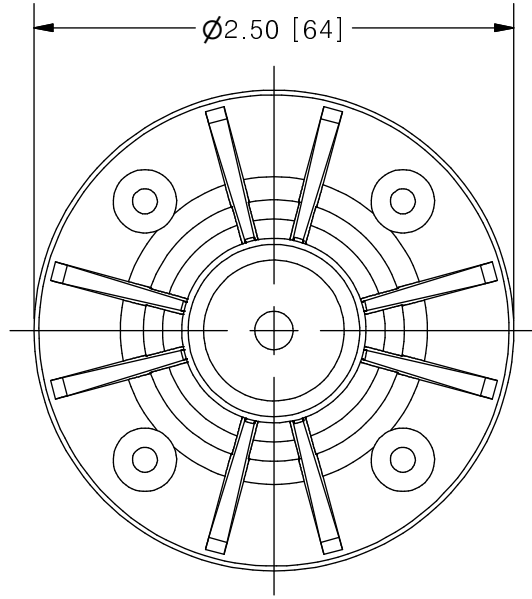


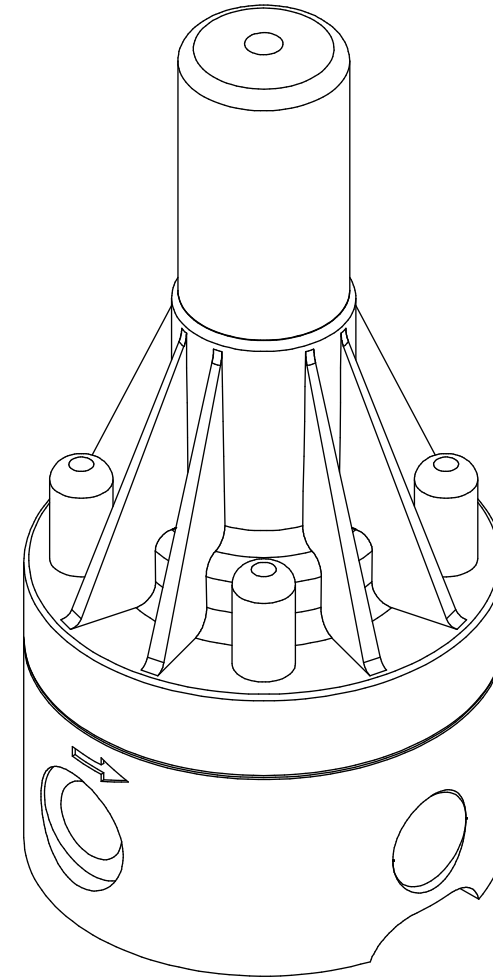
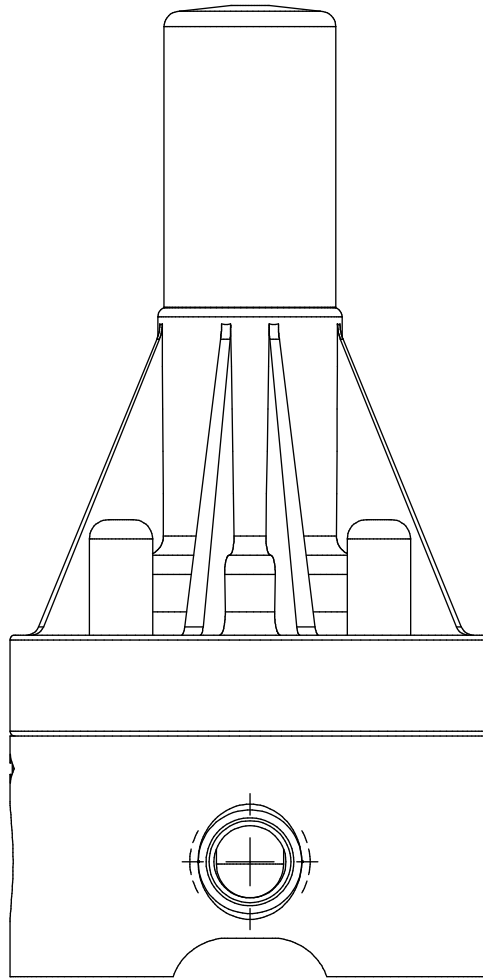
THIS DRAWING IS THE PROPERTY OF PRIMARY FLUID SYSTEMS INC. FROM WHICH A WRITTEN CONSENT FOR APPROVAL SHALL BE REQUIRED PRIOR TO COPYING.



SCALE 1 : 1

4.46 [113]  
.59 [15]

## ECO VALVE® A-SERIES BACK PRESSURE VALVE



| NO.                    | NAME                                | DESCRIPTION                                |
|------------------------|-------------------------------------|--|
| 1                      | MAX ALLOWABLE OPERATING TEMPERATURE | 180°F (82°C)                               |
| 2                      | MAX ALLOWABLE OPERATING PRESSURE    | 150 PSIG @ 70°F                            |
| CONNECTIONS            |                                     |  |
| 3                      | SIZE: INLET/OUTLET                  | 1/4"                                       |
| 4                      | CONNECTION TYPE                     | NPT  |
| MATERIALS (WETTED)     |                                     |  |
| 6                      | BODY                                | 316L SS (HASTELLOY AND ALLOY20 OPTIONAL)   |
| 7                      | DIAPHRAGM                           | PTFE BACKED EPDM (VITON AND EPDM OPTIONAL) |
| MATERIALS (NON-WETTED) |                                     |  |
| 8                      | SPRING BONNET/TOP                   | CPVC (316L SS AND ALUM OPTIONAL)           |
| 9                      | SPRING                              | NICKEL PLATED MUSIC WIRE ASTM A228         |
| 10                     | TOP/BOTTOM DISC                     | POLYPROPYLENE                              |
| 11                     | BOLTS, NUTS, WASHERS                | 18.8 SS, ANSI B18.3                        |
| 12                     | FACTORY SET PRESSURE                | 50 PSIG                                    |
| 13                     | SPRING RANGE                        | 7-150 PSIG                                 |

| REV | DESCRIPTION | DATE | NAME |
|-----|-------------|------|------|
| 0   | NEW DRAWING | --   | --   |

REVISION HISTORY

|   |  |                        |               |   |
|---|--|------------------------|---------------|---|
| <b>PRIMARY FLUID SYSTEMS INC.</b><br>1050 COOKE BLVD, BURLINGTON, ONTARIO L7T 4A8 |  | PROJECT: ECO A-SERIES  | SHT: 1 OF 1   | DRAWN BY: NG  |
| TITLE: BACK PRESSURE ECO VALVE A-SERIES WITH 1/4" NPT CONNECTIONS                 |  | DATE DRAWN: 8/4/2016   | SCALE: 1 : 1  | UNITS: INCH [mm]  |
| DWG NAME: ECO VALVE<br>DWG TYPE: PLANAR VIEW                                      |  | MATERIAL: SEE CHART    | ECO-25A-SS_R0 | DIMENSIONAL TOLERANCE<br>0.X = ± 0.25"<br>0.XX = ± 0.25"<br>0.XXX = ± 0.25" |
| APPROVED BY: _____<br>CHECKED BY: _____   |  | THIRD ANGLE PROJECTION |               | REV# 0<br>SHEET SIZE: B   |