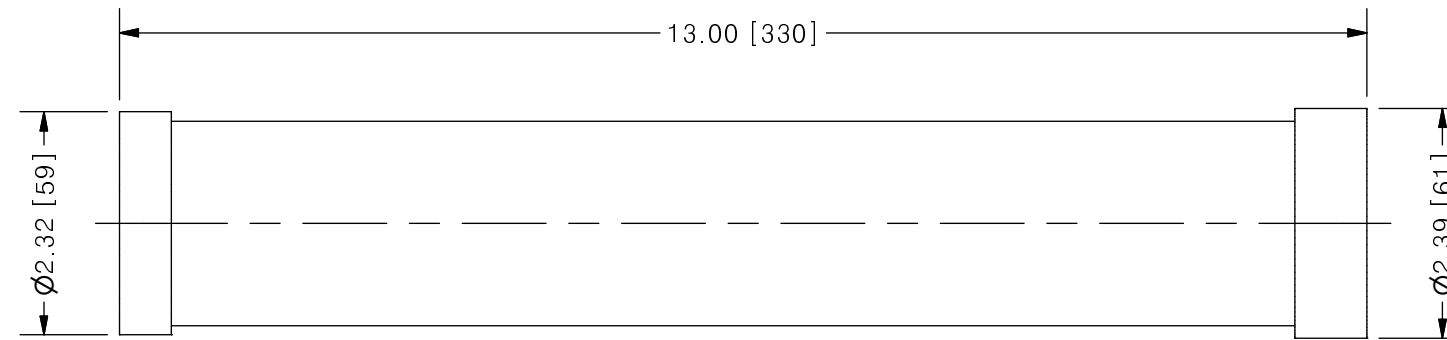
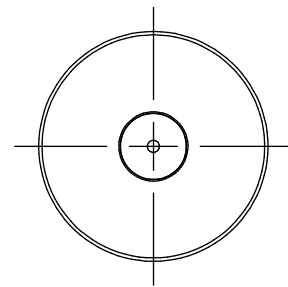


THIS DRAWING IS THE PROPERTY OF PRIMARY FLUID SYSTEMS INC. FROM WHICH A WRITTEN CONSENT FOR APPROVAL SHALL BE REQUIRED PRIOR TO COPYING.

	NO.	NAME	DESCRIPTION
	1	MAX ALLOWABLE OPERATING TEMPERATURE	140°F (60°C)
	2	MAX ALLOWABLE OPERATING PRESSURE	15 PSIG
	3	LEAK TEST	YES
CONNECTIONS	4	BOTTOM PORT CONNECTION	1/2"
	5	TOP PORT CONNECTION	DUST CAP
	6	TYPE	NPT
MATERIALS	7	CYLINDER	POLYPROPYLENE
	8	END CAPS	POLYPROPYLENE
INPUT DATA	12	VOLUME SIZE	500 ML
SCALE	13	GRADUATION	5 ML
COMMENTS	15	ALL CYLINDERS ARE RATED FOR LIQUID SERVICE ONLY	✓
	16	CYLINDERS ARE NOT PRESSURE VESSELS	✓

CLEARVIEW®
PP#3 POLYPROPYLENE CALIBRATION CYLINDER



SCALE 1 : 2

REV	DESCRIPTION	DATE	NAME
0	NEW DRAWING	--	--

REVISION HISTORY

PRIMARY FLUID SYSTEMS INC. 1050 COOKE BLVD, BURLINGTON, ONTARIO L7T 4A8	PROJECT: PP	SHT: 1 OF 1	DRAWN BY: NG
	DATE DRAWN: 5/25/2016	SCALE: 1 : 2	UNITS: INCH [mm]
TITLE: 500 ML CALIBRATION CYLINDER WITH 1/2" NPT CONNECTION	MATERIAL: SEE CHART	REV# 0	
DWG NO: PP#3-500_R0	DWG NAME: PP CYLINDER	DWG TYPE: PLANAR VIEW	APPROVED BY: CHECKED BY:
DIMENSIONAL TOLERANCE 0.X = ± 0.25" 0.XX = ± 0.25" 0.XXX = ± 0.25"		THIRD ANGLE PROJECTION 	