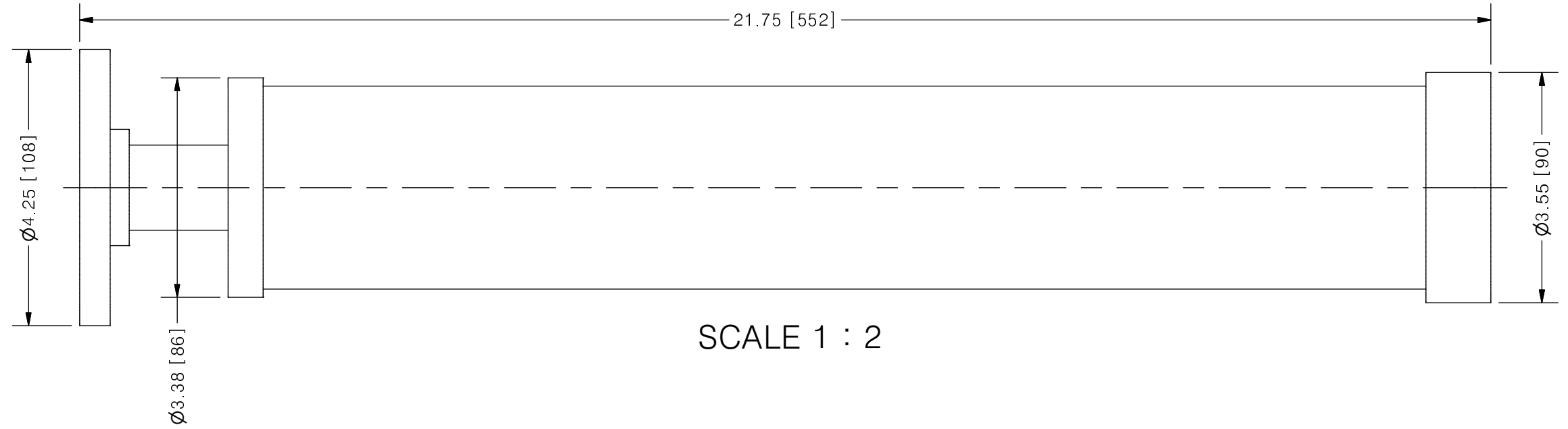
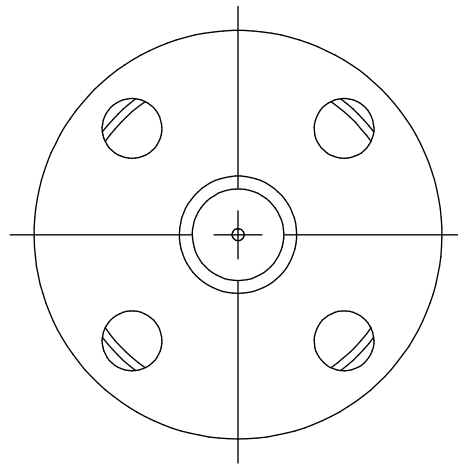


THIS DRAWING IS THE PROPERTY OF PRIMARY FLUID SYSTEMS INC. FROM WHICH A WRITTEN CONSENT FOR APPROVAL SHALL BE REQUIRED PRIOR TO COPYING.

	NO.	NAME	DESCRIPTION
	1	MAX ALLOWABLE OPERATING TEMPERATURE	140°F (60°C)
	2	MAX ALLOWABLE OPERATING PRESSURE	15 PSIG
	3	LEAK TEST	YES
CONNECTIONS	4	BOTTOM PORT CONNECTION	1"
	5	TOP PORT CONNECTION	DUST CAP
	6	TYPE	ASTM FLANGE
MATERIALS	7	CYLINDER	POLYPROPYLENE
	8	END CAPS	POLYPROPYLENE
INPUT DATA	12	VOLUME SIZE	2000 ML
SCALE	13	GRADUATION	20 ML
COMMENTS	15	ALL CYLINDERS ARE RATED FOR LIQUID SERVICE ONLY	√
	16	CYLINDERS ARE NOT PRESSURE VESSELS	√

CLEARVIEW®
PP#3 POLYPROPYLENE CALIBRATION CYLINDER



SCALE 1 : 2

PRIMARY FLUID SYSTEMS INC. 1050 COOKE BLVD, BURLINGTON, ONTARIO L7T 4A8	PROJECT: PP	SHT: 1 OF 1	DRAWN BY: NG
	DATE DRAWN: 7/15/2016	SCALE: 1 : 2	UNITS: INCH [mm]
TITLE: 2000 ML CALIBRATION CYLINDER WITH 1" ASTM FLANGE	MATERIAL: SEE CHART	REV# 0	
DWG NO: PP#3-2000-F_RO	DIMENSIONAL TOLERANCE 0.X = ± 0.25" 0.XX = ± 0.25" 0.XXX = ± 0.25"	SHEET SIZE: B	
DWG NAME: PP CYLINDER	APPROVED BY:	CHECKED BY:	THIRD ANGLE PROJECTION
DWG TYPE: PLANAR VIEW			

REV	DESCRIPTION	DATE	NAME
0	NEW DRAWING	--	--

REVISION HISTORY