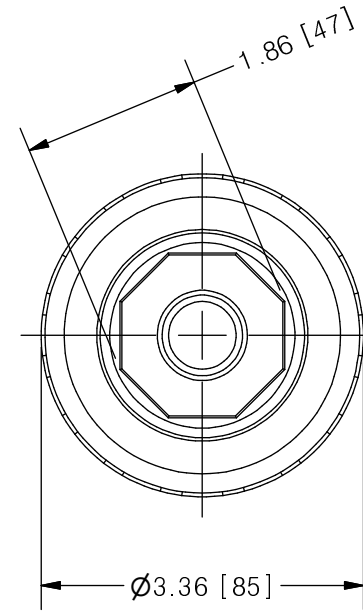
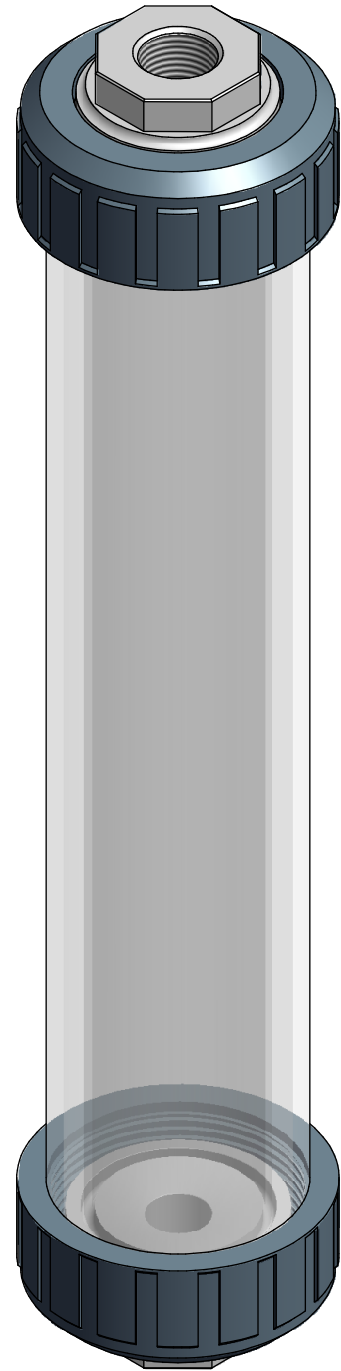
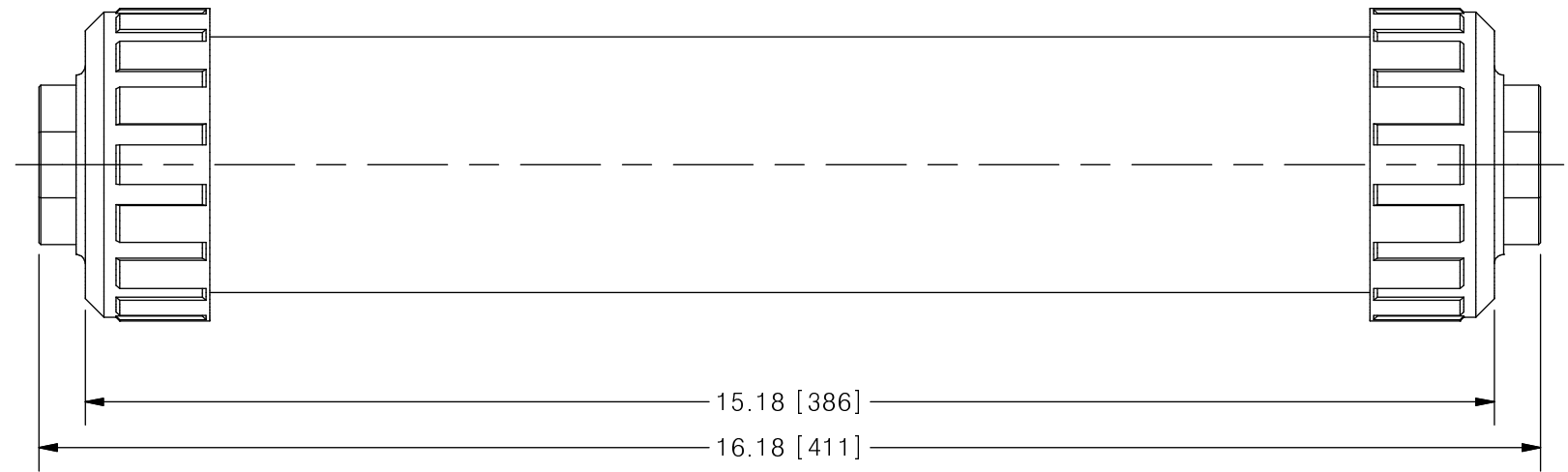


THIS DRAWING IS THE PROPERTY OF PRIMARY FLUID SYSTEMS INC. FROM WHICH A WRITTEN CONSENT FOR APPROVAL SHALL BE REQUIRED PRIOR TO COPYING.

|                     | NO. | NAME  | DESCRIPTION        |
|---------------------|-----|---|--------------------|
|                     | 1   | MAX ALLOWABLE OPERATING TEMPERATURE             | 140°F (60°C)       |
|                     | 2   | MAX ALLOWABLE OPERATING PRESSURE                | 15 PSIG            |
|                     | 3   | LEAK TEST                                       | YES                |
| CONNECTIONS         | 4   | BOTTOM PORT CONNECTION                          | 1/2"               |
|                     | 5   | TOP PORT CONNECTION                             | 1/2"               |
|                     | 6   | TYPE  | NPT                |
| MATERIALS           | 7   | CYLINDER  | BOROSILICATE GLASS |
|                     | 8   | END CAPS  | PVC/CPVC           |
|                     | 9   | GLASS SEALING 'O' RINGS                         | VITON              |
| MATERIAL NON WETTED | 10  | OUTER SHIELD                                    | POLYCARBONATE      |
|                     | 11  | UNION NUTS                                      | PVC                |
|                     | 12  | SHIELD SEALING 'O' RINGS                        | BUNA-N             |
| INPUT DATA          | 13  | VOLUME SIZE                                     | 500 ML             |
| SCALE               | 14  | GRADUATION                                      | 5 ML               |
| COMMENTS            | 15  | ALL CYLINDERS ARE RATED FOR LIQUID SERVICE ONLY |                    |
|                     | 16  | CYLINDERS ARE NOT PRESSURE VESSELS              |                    |



## CLEARVIEW® CVG GLASS CALIBRATION CYLINDER



SCALE 1 : 2

| REV | DESCRIPTION                               | DATE | NAME |
|-----|---|------|------|
| 5   | REMODELLED FROM CVG-P--STD-4100-CAT REV 5 | --   | --   |

|   |  |   |                           |                         |
|---|--|---|---------------------------|-------------------------|
| <b>PRIMARY FLUID SYSTEMS INC.</b><br>1050 COOKE BLVD, BURLINGTON, ONTARIO L7T 4A8 |  | PROJECT: CVG  | SHT: 1 OF 1               | DRAWN BY: NG            |
| TITLE: 500 ML CALIBRATION CYLINDER<br>WITH 1/2" NPT CONNECTION                    |  | DATE DRAWN: 6/23/2016   | SCALE: 1:2                | UNITS: INCH[mm]         |
| DWG NAME: CVG CYLINDER<br>DWG TYPE: PLANAR VIEW                                   |  | MATERIAL: SEE CHART   | DWG NO: CVG-500-PV-50N_R5 | REVISION HISTORY        |
| APPROVED BY: _____<br>CHECKED BY: _____   |  | DIMENSIONAL TOLERANCE<br>0.XX = ± 0.25"<br>0.XXX = ± 0.25"<br>0.XXX = ± 0.25" |                           | REV# 5<br>SHEET SIZE: B |