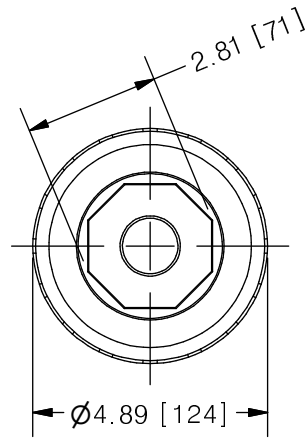
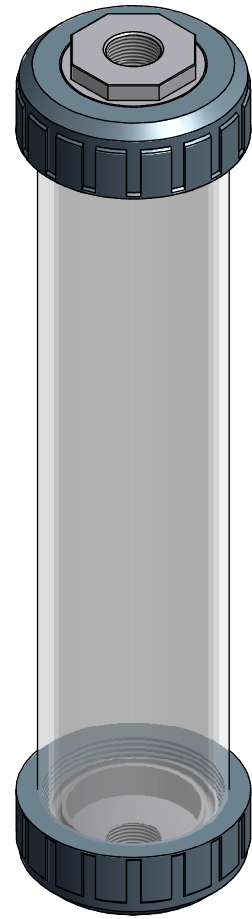
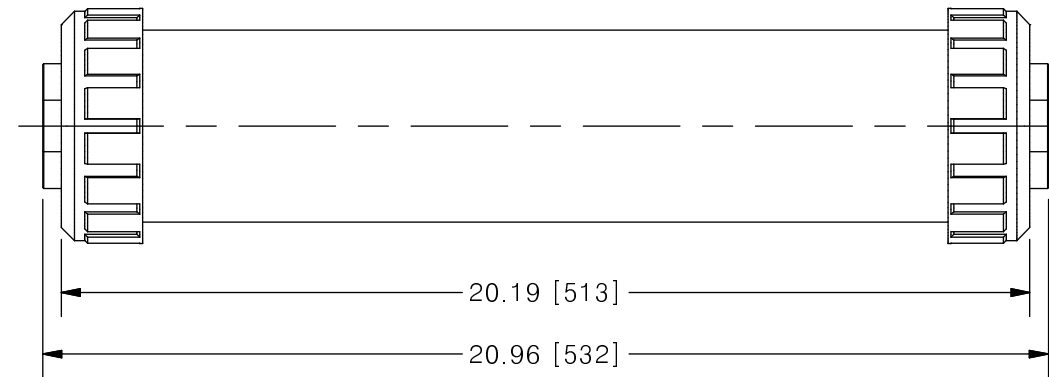


THIS DRAWING IS THE PROPERTY OF PRIMARY FLUID SYSTEMS INC. FROM WHICH A WRITTEN CONSENT FOR APPROVAL SHALL BE REQUIRED PRIOR TO COPYING.

| | NO. | NAME | DESCRIPTION |
|---------------------|-----|-------------------------------------------------|---------------------|
| | 1 | MAX ALLOWABLE OPERATING TEMPERATURE | 140°F (60°C) |
| | 2 | MAX ALLOWABLE OPERATING PRESSURE | 15 PSIG |
| | 3 | LEAK TEST | YES |
| CONNECTIONS | 4 | BOTTOM PORT CONNECTION | 1" |
| | 5 | TOP PORT CONNECTION | 1" |
| | 6 | TYPE | NPT |
| MATERIALS | 7 | CYLINDER | BOROSILICATE GLASS |
| | 8 | END CAPS | 316 STAINLESS STEEL |
| | 9 | GLASS SEALING 'O' RINGS | VITON |
| MATERIAL NON WETTED | 10 | OUTER SHIELD | POLYCARBONATE |
| | 11 | UNION NUTS | PVC |
| | 12 | SHIELD SEALING 'O' RINGS | BUNA-N |
| INPUT DATA | 13 | VOLUME SIZE | 2000 ML |
| SCALE | 14 | GRADUATION | 20 ML |
| COMMENTS | 15 | ALL CYLINDERS ARE RATED FOR LIQUID SERVICE ONLY | |
| | 16 | CYLINDERS ARE NOT PRESSURE VESSELS | |



CLEARVIEW® CVG GLASS CALIBRATION CYLINDER



SCALE 1 : 4

| REV | DESCRIPTION | DATE | NAME |
|-----|-------------------------------------------|------|------|
| 2 | REMODELLED FROM CVG-P--STD-4100-CAT REV 5 | -- | -- |

| | | | | |
|-----------------------------------------------------------------------------------|--|-----------------------------------------------------------------------------|----------------------------|-------------------------|
| PRIMARY FLUID SYSTEMS INC. 1050 COOKE BLVD, BURLINGTON, ONTARIO L7T 4A8 | | PROJECT: CVG | SHT: 1 OF 1 | DRAWN BY: NG |
| TITLE: 2000 ML CALIBRATION CYLINDER WITH 1" NPT CONNECTION | | DATE DRAWN: 6/23/2016 | SCALE: 1 : 4 | UNITS: INCH[mm] |
| DWG NAME: CVG CYLINDER DWG TYPE: PLANAR VIEW | | MATERIAL: SEE CHART | DWG NO: CVG-2000-SS-10N_R2 | REV# 2 |
| APPROVED BY: _____ CHECKED BY: _____ | | DIMENSIONAL TOLERANCE 0.X = ± 0.25" 0.XX = ± 0.25" 0.XXX = ± 0.25" | | SHEET SIZE: B |